



[Manuals.plus](#) /

> [maXpeedingrods](#) /

> maXpeedingrods Rear Air Suspension Bags Kit User Manual

maXpeedingrods NZ50EZ

maXpeedingrods Rear Air Suspension Bags Kit User Manual

Model: NZ50EZ

1. PRODUCT OVERVIEW

This manual provides detailed instructions for the installation, operation, and maintenance of your maXpeedingrods 5000 lbs Rear Air Suspension Bags Kit. Designed to enhance the stability and comfort of your vehicle, this air helper spring kit is an essential upgrade for hauling and towing heavy loads.



Figure 1: Complete maXpeedingrods Rear Air Suspension Bags Kit and components.

2. APPLICATION AND COMPATIBILITY

This air suspension kit is specifically designed to fit the following vehicle models:

- Dodge Ram 4500 (2007-2024)
- Dodge Ram 5500 (2007-2024)

Important Note on Modified Vehicles:

Will it **fit** if your vehicle modified before?



If the rear of your vehicle lifted, you may need another spacer to support the kit.



If the front of your vehicle lifted, It will fit.



If the front and the rear of your vehicle lowered, It will not fit.

MAX SPEEDING RODS Since 2006
YOUR GATEWAY TO PERFORMANCE DRIVING

Figure 2: Compatibility guidelines for modified vehicles.

- If the rear of your vehicle is lifted, an additional spacer may be required to support the kit.
- If only the front of your vehicle is lifted, the kit will fit.
- If both the front and rear of your vehicle are lowered, this kit **will not** fit.

3. KEY FEATURES

3.1. Enhanced Stability and Comfort

The air helper spring kit significantly improves vehicle stability and handling, especially when hauling or towing. It achieves this by reducing wear and tear on suspension components, eliminating vehicle squat, minimizing trailer sway, and preventing bottoming out.



Figure 3: Visual comparison of vehicle leveling before and after loading with the air suspension kit.

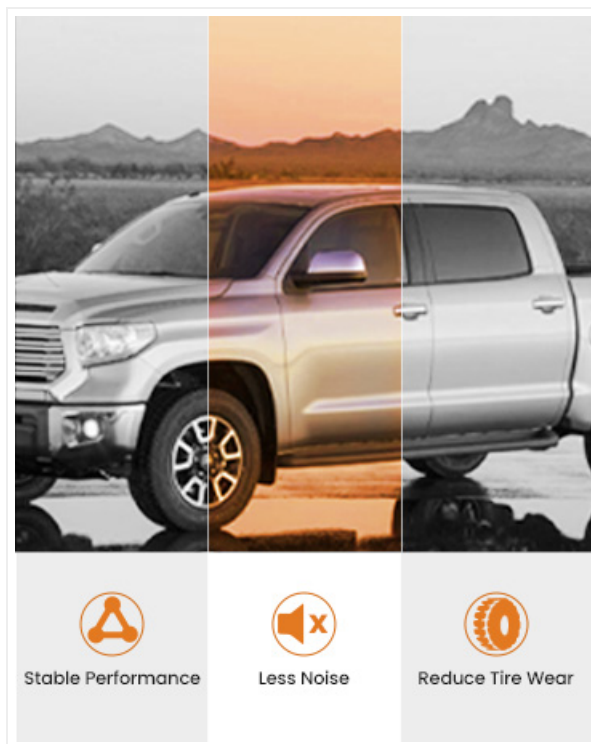


Figure 4: Benefits of the air suspension kit including stable performance, reduced noise, and decreased tire wear.

3.2. Adjustable Load Leveling Capability

The system offers up to 5,000 pounds of load leveling capability. Air pressure can be adjusted from 5 to 100 PSI, allowing you to customize the ride based on varying road conditions and load requirements for a safe and comfortable experience.

Load Leveling Capacity



Figure 5: The air spring's maximum load leveling capacity.

3.3. Internal Jounce Bumper for Extra Protection

An internal jounce bumper is integrated within the air spring. This feature prevents damage when driving with an empty air spring and provides additional stability when towing or hauling heavy loads, acting as a secondary suspension component.

Internal Jounce Bumper

Prevent the abrupt bottoming-out of the suspension at full compression



Figure 6: Illustration of the internal jounce bumper within the air spring.

3.4. Durable Construction Materials

The air springs are constructed with high-quality, multi-ply rubber sleeves and robust seals to ensure longevity and prevent leaks. Key components include high-strength ST12 steel end caps, thicker rubber air sleeves, and a multi-ply rubber structure.

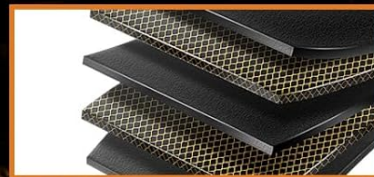
Durable Material



High-Strength ST12 Steel End Caps



Thicker Rubber Air Sleeves and Seals



Multi-Ply Rubber Structure

MAX SPEEDING RODS Since 2006
YOUR GATEWAY TO PERFORMANCE DRIVING

Figure 7: Components contributing to the durability of the air spring.

Durable Multi-Ply Sleeves

**Strict Manufacture Process
Increase Longevity**

Thin rubber air sleeves and seals of air springs will cause deteriorated and leaks easily. maXpeedingrods Air Springs feature high-quality multi-ply sleeves and strict manufacture process to address this common problems.

- Outer Cover of Calendered Rubber**
Keep Smooth and Reduce Bubbles
- First Layer of Reinforced Rubber Cords**
Improve Strength
- Intermediate Layer of Calendered Rubber**
Anti-aging
- Second Layer of Reinforced Rubber Cords**
Improve Strength
- Inner layer of Calendered Rubber**
Keep Sealed

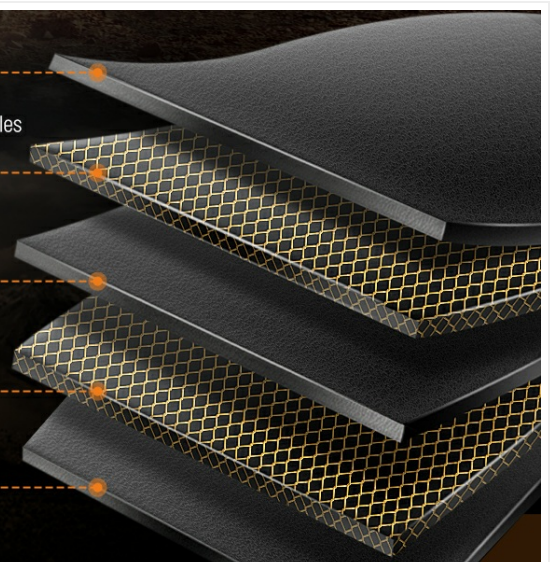


Figure 8: Detailed view of the durable multi-ply sleeve construction.

3.5. Bolt-On Installation

The kit is designed for a straightforward bolt-on installation, simplifying the setup process.



Figure 9: Example of bolt-on installation on a vehicle chassis.

3.6. Reliable Mounting Accessories

The kit includes premium Q235 steel brackets and bolts with Dacromet anti-rust surface treatment, ensuring secure and long-lasting mounting.

Reliable Mounting Accessories



Premium **Q235 Steel** Brackets



Dacromet Anti-Rust Surface Treatment for Bolts

MAX SPEEDING RODS Since 2006
YOUR GATEWAY TO PERFORMANCE DRIVING

Figure 10: Mounting accessories included with the kit.

3.7. Rigorous Fatigue Testing

The air springs undergo extensive fatigue testing, exceeding 5,000,000 cycles, to ensure durability, driving comfort, and safety under various conditions.

Fatigue Testing

Over 5,000,000 Times

Driving Comfort and Safety



Since 2006
MAX SPEEDING RODS
YOUR GATEWAY TO PERFORMANCE DRIVING

Figure 11: Air spring undergoing fatigue testing.



Burst Pressure $\geq 2.0\text{MPa}$



Fatigue Testing
Over 5,000,000 Times



100% Airtightness Test

4. SETUP AND INSTALLATION

Installation of the maXpeedingrods air suspension kit is designed to be a straightforward bolt-on process. While specific steps may vary slightly depending on your vehicle's exact configuration, the general procedure involves mounting the air springs and connecting the air lines.

4.1. General Installation Steps (Consult Vehicle-Specific Manual for Details)

1. Safely lift and support the rear of the vehicle.
2. Remove existing suspension components as necessary to access the mounting points.
3. Position the air springs and mounting brackets according to the vehicle's frame and axle.
4. Securely fasten all bolts and nuts. Ensure all connections are tight.
5. Route the air lines from the air springs to an accessible inflation point. Avoid sharp bends or kinks.
6. Connect the air lines to the air springs using the provided fittings.
7. Lower the vehicle and inflate the air springs to a low pressure (e.g., 5-10 PSI) to check for proper seating.
8. Perform a leak test (see Section 6.1).
9. Adjust air pressure to desired level (see Section 5).

5. OPERATING INSTRUCTIONS

The maXpeedingrods air suspension kit allows for adjustable air pressure to optimize your vehicle's ride height and load support.

5.1. Adjusting Air Pressure

- The air springs are adjustable from 5 PSI (minimum recommended pressure for an empty vehicle) to 100 PSI (maximum pressure for heavy loads).
- Use an air compressor and a pressure gauge to inflate or deflate the air springs via the inflation valves.
- For an empty vehicle, maintain a minimum of 5 PSI to prevent damage to the air springs.
- When carrying a load or towing, gradually increase the air pressure until the vehicle achieves a level stance and the desired ride quality. Do not exceed 100 PSI.
- Adjust pressure as needed based on load weight and road conditions to ensure optimal stability and comfort.

6. MAINTENANCE

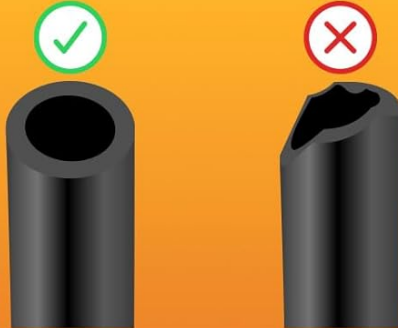
Regular maintenance ensures the longevity and optimal performance of your air suspension kit.

6.1. Preventing and Checking for Leaks

Proper installation is crucial to prevent air leaks. Follow these guidelines and checks:

How to Prevent Leaks

Caused by Installation Mistakes



Make sure leave a perfectly smooth and tight seal.



Verify that the air line is properly placed and routed.



Use a spray bottle filled with soap and water to spray down all of your fittings (included the bag itself), which helps you find a leak instantly and easily.

MAX SPEEDING RODS Since 2006
YOUR GATEWAY TO PERFORMANCE DRIVING

Figure 13: Key steps to prevent and detect air leaks.

- **Ensure Smooth and Tight Seals:** When cutting air lines, make sure the cut is perfectly smooth and straight to ensure a tight seal with the fittings. An uneven cut can lead to leaks.
- **Proper Air Line Routing:** Verify that the air line is properly placed and routed, avoiding sharp bends, kinks, or contact with moving parts or hot surfaces.
- **Soap and Water Test:** To check for leaks, fill a spray bottle with a mixture of soap and water. Spray down all fittings and the air bag itself. Bubbles forming indicate an air leak. Tighten connections or re-seat air lines as necessary.

6.2. General Maintenance Tips

- Periodically inspect the air springs, brackets, and air lines for any signs of wear, damage, or corrosion.
- Ensure all mounting hardware remains tight.
- Maintain recommended air pressure levels; avoid driving with completely deflated air springs.

7. TROUBLESHOOTING

7.1. Common Issues and Solutions

Problem	Possible Cause	Solution
Air Leakage	Improperly cut air line, loose fitting, damaged air line/bag.	Perform soap and water test (Section 6.1). Re-cut and re-seat air lines. Tighten fittings. Replace damaged components if necessary.
Vehicle Not Leveling Properly	Incorrect air pressure, overloaded, air leak.	Adjust air pressure within recommended range (5-100 PSI). Reduce load if exceeding kit capacity. Check for leaks.
Kit Does Not Fit Modified Vehicle	Vehicle lowered front and rear.	This kit is not compatible with vehicles lowered at both front and rear. Refer to Section 2 for compatibility.
Excessive Bottoming Out	Insufficient air pressure, extremely heavy load.	Increase air pressure. Ensure load is within 5000 lbs capacity.

8. SPECIFICATIONS

Specification	Detail
Product Model	NZ50EZ
Load Leveling Capacity	Up to 5,000 lbs
Adjustable Air Pressure	5 PSI to 100 PSI
Vehicle Position	Rear
Item Weight	29.7 pounds
Product Dimensions	17.17 x 14.57 x 8.31 inches
Country of Origin	China
Materials	High-Strength ST12 Steel End Caps, Multi-Ply Rubber Air Sleeves, Q235 Steel Brackets, Dacromet Anti-Rust Bolts

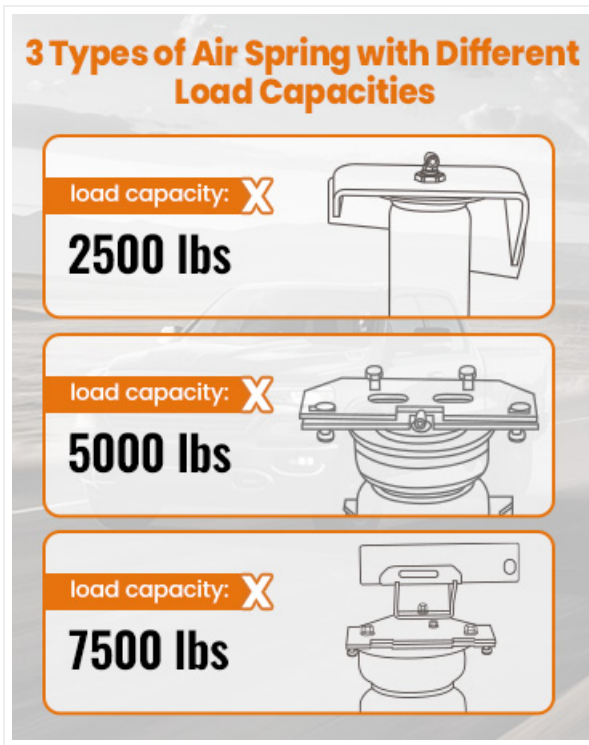


Figure 14: Different air spring load capacities. This kit provides 5000 lbs capacity.

9. WARRANTY AND SUPPORT

maXpeedingrods is committed to providing high-quality products and excellent customer service.

9.1. Warranty Information


maXpeedingrods warrants its products against manufacturing defects under normal use for **1 year** from the date of purchase. Replacement is available within 12 months for quality issues.

9.2. Customer Support

For technical support, customer service, or warranty claims, please contact maXpeedingrods customer support. They offer 24/7 customer service and lifetime technical support.



 **24/7** customer service and support

 **12** Months Warranty
Replacement is available in 12 months for Quality Issue


 **L**ifetime
Lifetime technical support and customer service

Figure 15: maXpeedingrods customer support and warranty details.