

VIZOLINK V21

VIZOLINK V21 4K Webcam User Manual

Model: V21

INTRODUCTION

This manual provides detailed instructions for the setup, operation, and maintenance of your VIZOLINK V21 4K Webcam. Please read this manual thoroughly before using the product to ensure optimal performance and longevity.

WHAT'S IN THE BOX

Verify that all items are present in the package:

- Webcam
- Remote Control
- USB Type-C Adapters
- Tripod
- User Manual

SETUP INSTRUCTIONS

1. Physical Installation

The VIZOLINK V21 webcam offers flexible installation options:

- **Monitor Clip:** Attach the webcam securely to the top of your monitor or laptop screen using the integrated clip. Adjust the angle as needed.
- **Tripod Mounting:** For desktop use or specific angles, attach the webcam to the included tripod. Ensure the tripod is placed on a stable, flat surface.
- **Freestanding:** The webcam can also be placed directly on a flat surface without the tripod.



Image: VIZOLINK V21 Webcam demonstrating flexible installation on a monitor, tripod, and as a freestanding unit. The image highlights the 360-degree rotation and 90-degree tilt capabilities.

2. Connecting the Webcam

The VIZOLINK V21 is a Plug & Play device, requiring no additional drivers for most operating systems.

1. Connect the webcam to your computer using the provided USB cable.
2. If your computer has a USB-C port, use the included USB Type-C adapter.
3. The webcam will be automatically recognized by your operating system (Windows, macOS, Linux, Chrome OS, Android).



Image: A VIZOLINK V21 Webcam connected to a laptop, showing the USB 2.0 and Type-C compatibility. The image emphasizes "Plug & Play" and "Superior Compatibility" with various operating systems and applications, requiring no additional software or drivers.

OPERATING INSTRUCTIONS

1. Basic Operation

- Once connected, open your preferred video conferencing or streaming application (e.g., Zoom, Skype, Microsoft Teams, OBS Studio, YouTube, Facebook, TikTok).
- Select the VIZOLINK V21 webcam as your video and audio input device within the application's settings.

2. Remote Control Functions

The included remote control allows for convenient adjustment of webcam settings:

- **Digital Zoom:** Use the zoom buttons to adjust the magnification (1X, 2X, 3X).
- **Mute:** Toggle the microphone mute function.
- **Freeze Image:** Pause the video feed.
- **Center/Movement:** Adjust the camera's field of view (PTZ function).
- **Focus:** Control autofocus or switch to manual focus.
- **Volume Adjustment:** Control the speaker volume.



Image: The VIZOLINK V21 remote control with illustrations of its functions: mute/unmute, freeze image, 3x digital zoom, and one-click fixed focus. This demonstrates the remote's capabilities for controlling the webcam.

3. Privacy Cover

The integrated privacy cover protects your privacy and keeps the lens clean. Slide the cover to open or close the lens.



Image: A VIZOLINK V21 Webcam demonstrating the integrated privacy cover in both open ("ON") and closed ("OFF") positions. A user's face is shown when the cover is open, and a crossed-out camera icon when closed, emphasizing privacy protection.

KEY FEATURES

1. Video Quality

The VIZOLINK V21 supports 4K@30FPS, 1080P@30FPS, and 2K@30FPS high-definition recording,

providing clear and fluid video transmission suitable for online seminars, video conferences, live streaming, and online teaching.

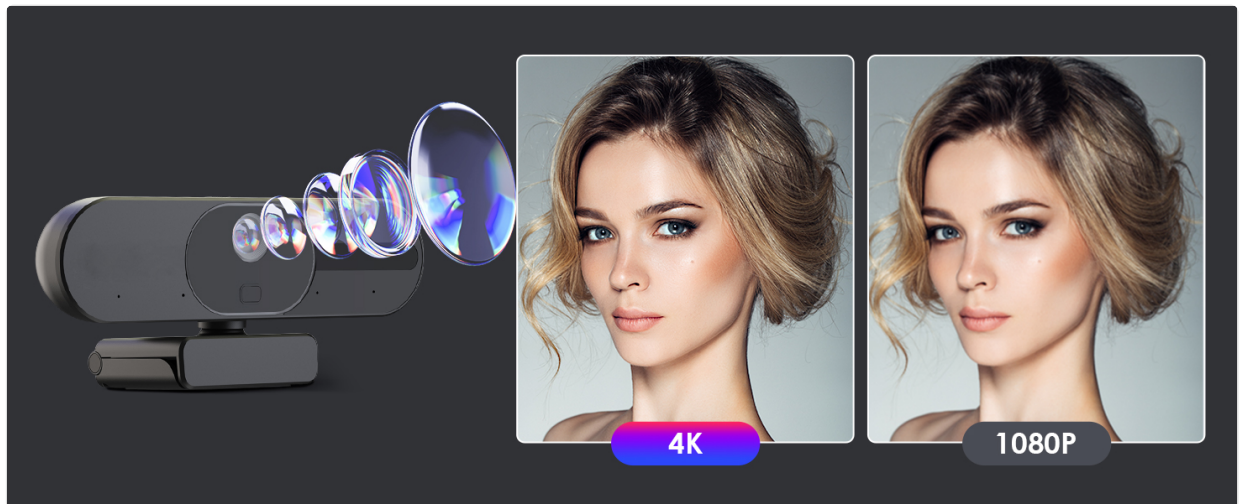


Image: A split image comparing the video resolution of 4K (left) and 1080P (right) from the VIZOLINK V21 Webcam, illustrating the superior clarity of 4K resolution at 30 frames per second.

2. Audio System

Equipped with four built-in noise-reducing microphones and speakers, the webcam intelligently reduces background noise and automatically captures voices within 6 meters without delay. The integrated speakers allow for direct audio playback.



Image: The image depicts the VIZOLINK V21 Webcam mounted on a laptop, with visual cues indicating the functionality of its four noise-canceling microphones and built-in speakers. Sound waves are shown being captured and processed, emphasizing the webcam's ability to deliver clear audio by reducing ambient noise.

3. Autofocus and Wide Angle

The autofocus function ensures your video remains consistently sharp and clear. The 112° wide-angle lens provides extensive coverage, accommodating more people and a broader view.



Image: A VIZOLINK V21 Webcam positioned above a large screen in a meeting room, illustrating its 112-degree field of view. The wide angle captures multiple participants around a table, highlighting its suitability for group conferences.

4. Automatic Low-Light Correction

The webcam features automatic low-light correction, restoring real and natural image details even in challenging lighting conditions.

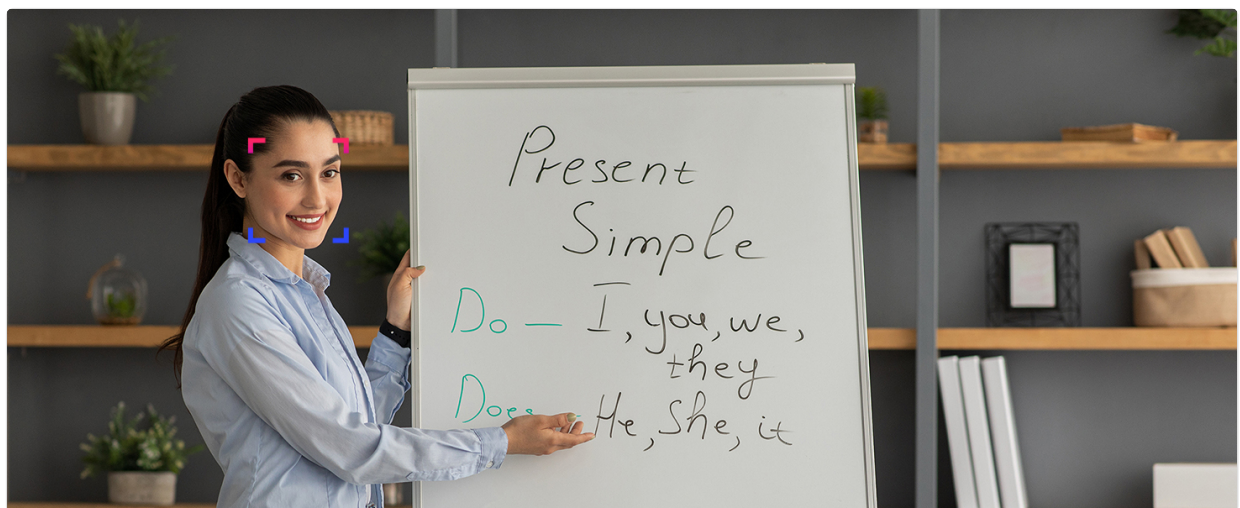


Image: This image presents a side-by-side comparison of a person in a dimly lit room. The left side, labeled 'Nuestra' (Ours), shows the VIZOLINK V21 Webcam's output with effective low-light correction, resulting in a clear and naturally lit image. The right side, labeled 'Otros' (Others), shows a darker, less detailed image from a typical webcam, highlighting the V21's superior performance in challenging lighting conditions.

MAINTENANCE

- **Cleaning the Lens:** Use a soft, dry, lint-free cloth to gently wipe the webcam lens. Avoid using harsh chemicals or abrasive materials.
- **Cleaning the Body:** Wipe the webcam body with a slightly damp cloth. Ensure no moisture enters the device.
- **Storage:** When not in use, store the webcam in a cool, dry place. Use the privacy cover to protect the lens from dust and scratches.
- **Cable Care:** Avoid bending or twisting the USB cable excessively to prevent damage.

TROUBLESHOOTING

Problem	Possible Cause	Solution
No image or video feed.	<ul style="list-style-type: none"> ◦ Webcam not properly connected. ◦ Privacy cover is closed. ◦ Incorrect webcam selected in software. ◦ USB port issue. 	<ul style="list-style-type: none"> ◦ Ensure the USB cable is securely connected to both the webcam and the computer. ◦ Slide the privacy cover to open the lens. ◦ Check your application's settings and select "VIZOLINK V21" as the video input. ◦ Try a different USB port on your computer.
Poor image quality (blurry, dark).	<ul style="list-style-type: none"> ◦ Insufficient lighting. ◦ Lens is dirty. ◦ Autofocus issue. 	<ul style="list-style-type: none"> ◦ Ensure adequate lighting in your environment. The webcam has low-light correction, but good lighting is always best. ◦ Clean the webcam lens with a soft, dry cloth. ◦ Use the remote control to adjust focus or reset autofocus.
No audio or poor audio quality.	<ul style="list-style-type: none"> ◦ Microphone muted. ◦ Incorrect audio device selected. ◦ Environmental noise. 	<ul style="list-style-type: none"> ◦ Check the mute button on the remote control or in your software. ◦ In your application's settings, select "VIZOLINK V21" as the audio input/output device. ◦ Ensure you are within 6 meters of the webcam for optimal voice capture.
Remote control not working.	<ul style="list-style-type: none"> ◦ Batteries are low or incorrectly inserted. ◦ Obstruction between remote and webcam. 	<ul style="list-style-type: none"> ◦ Replace the batteries in the remote control. ◦ Ensure a clear line of sight between the remote and the webcam.

SPECIFICATIONS

Feature	Detail
Model Number	V21
Brand	VIZOLINK
Video Capture Resolution	4K@30FPS, 1080P@30FPS, 2K@30FPS
Photo Sensor Technology	CMOS
Connectivity Technology	USB
Special Features	Built-in Speakers, Remote Control, Microphones, Noise Reduction, Autofocus, 112° Wide View, Privacy Cover
Color	Black

Feature	Detail
Dimensions	18.7 x 17.6 x 7.4 cm
Weight	440 g
Video Capture Format	MPEG
Audio Format Support	MP2
Maximum Focal Length	200 Millimeters
Country of Origin	China

WARRANTY AND SUPPORT

- **Warranty:** The VIZOLINK V21 Webcam comes with a 2-year exclusive warranty.
- **Technical Support:** Lifetime technical support is provided for this product.
- **Contact:** For any issues or inquiries, please contact VIZOLINK customer service.
- **Response Time:** VIZOLINK aims for a 24-hour rapid response to customer queries.



Image: A graphic detailing VIZOLINK's customer support, including 24-hour rapid response, a 2-year exclusive warranty, and lifetime technical support, with an image of a customer service representative.