



[Manuals.plus](#) /

› [Mingtawn](#) /

› Mingtawn Military Smart Watch User Manual

## Mingtawn AK75

# Mingtawn Military Smart Watch User Manual

Model: AK75

## INTRODUCTION

---

This manual provides comprehensive instructions for the Mingtawn Military Smart Watch, Model AK75. It covers setup, operation, maintenance, and troubleshooting to ensure optimal performance and user experience. Please read this manual thoroughly before using your device.



Image: Front view of the Mingtawn Military Smart Watch, showcasing its robust design and digital display.

## PACKAGE CONTENTS

---

Before proceeding, verify that all items are present in the package:

- Mingtawn Military Smart Watch
- Charging Cable
- User Manual



Image: Diagram illustrating the smart watch, charging cable, and user manual, along with watch dimensions.

## SETUP GUIDE

### 1. Initial Charging

Before first use, fully charge the smart watch. Connect the charging cable to the watch's charging port and a USB power source. A full charge typically takes approximately 3 hours.



Image: Visual representation of the 700mAh battery capacity and estimated battery life under different usage scenarios.

### 2. App Installation and Pairing

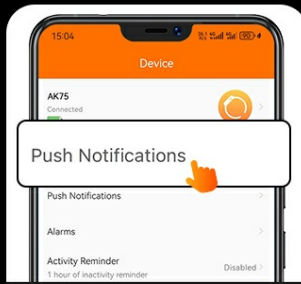
To unlock the full functionality of your smart watch, download and install the "FitCloudPro" app on your smartphone.

1. Download the "FitCloudPro" app from Google Play Store (for Android) or Apple App Store (for iOS).
2. Ensure your phone's Bluetooth is turned on.
3. Open the "FitCloudPro" app, navigate to "Device" and select "Add Peripheral Now".
4. On your phone, confirm the Bluetooth pairing request when prompted.
5. Enable "Notifications" permission for the app to receive alerts on your watch.

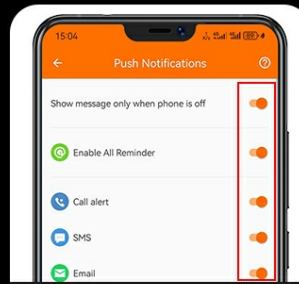
## How to receive message or APP notification? **Android**



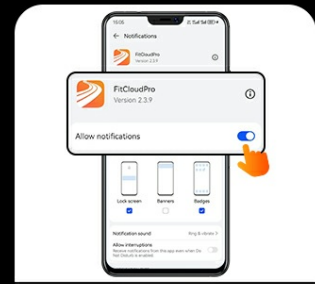
**1** Connect watch & phone via Bluetooth.



**2** Go to "Device" and click to open "Push Notifications"



**3** Go to "Device" and click "App", then enable foredesired apps.



**4** Go to your phone's "Settings" to allow "FitcloudPro" to access "Notifications"

1. Ensure the "FitCloudPro" app remains active (Android users need to add the app to the whitelist in Settings).

2. Disable "Do Not" & "Low Power Mode". 3. Message sync won't occur if the app logged into other devices or phone in the chat interface.

Image: Step-by-step visual guide for connecting the smart watch to a smartphone via the FitCloudPro app for both iOS and Android.

### 3. Receiving Notifications

To receive message and app notifications, follow these steps within the FitCloudPro app:

- Connect watch & phone via Bluetooth.
- Go to "Device" and click to open "Push Notifications".
- Enable desired apps for notifications.
- For iOS: Go to your phone's "Settings" to allow "FitCloudPro" to access "Notifications".
- For Android: Ensure the "FitCloudPro" app remains active (add to whitelist in settings if necessary). Disable "Do Not Disturb" & "Low Power Mode". Message sync won't occur if the app is logged into other devices or phone in the chat interface.

## Size & Package Contents

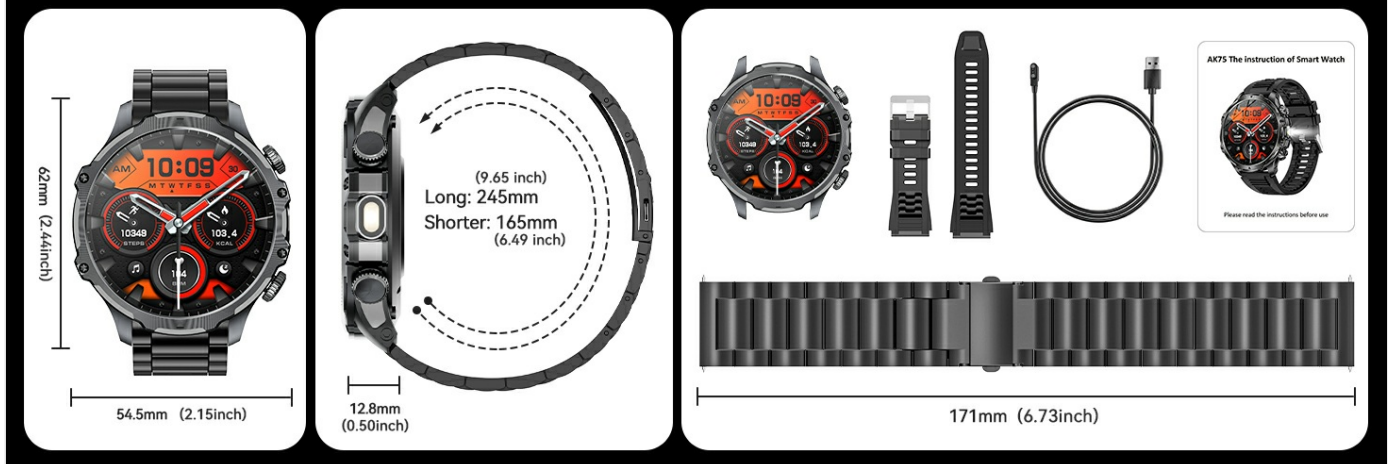


Image: Detailed instructions and screenshots demonstrating how to enable message and app notifications for both iOS and Android devices.

## OPERATING INSTRUCTIONS

### Display and Navigation

The watch features a 1.85-inch HD touch screen with 360x360 resolution for clear visuals. Navigate through menus by swiping across the screen. The watch also supports a 3D Cube Menu interface, accessible by double-clicking the orange button in the upper right corner, offering 6 different menu styles.

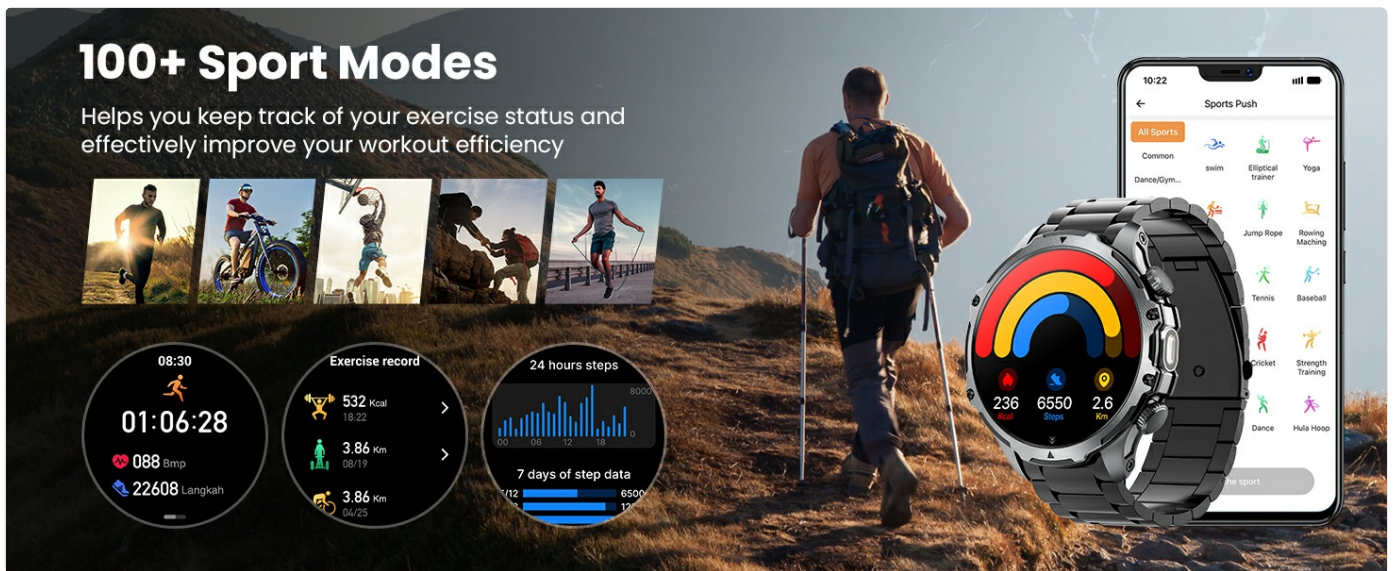


Image: Illustration of the 3D Cube Menu feature, showing various menu interface options and how to switch between them. You can customize the watch dial by choosing from various pre-set options or by uploading your favorite picture as the watch face through the app.



Image: Examples of customizable watch dials, demonstrating the ability to personalize the watch face with different designs or personal photos.

## Bluetooth Calls and Notifications

The smart watch is equipped with Bluetooth 5.0, a high-quality speaker, and a microphone, allowing you to make and receive calls directly from your wrist. It also supports music playback control. Once connected to your phone, you will receive vibrating alerts for text messages, phone calls, and notifications from various social media applications (Facebook, WhatsApp, Instagram, Snapchat, Skype, Line, etc.).

# LED Strong Flashlight

LED Strong Flashlight Ultra-bright LED light source,  
The light on your wrist ignites your way, Fearless in the dark.



Image: Visual guide showing how to make and receive Bluetooth calls and manage message notifications on the smart watch.

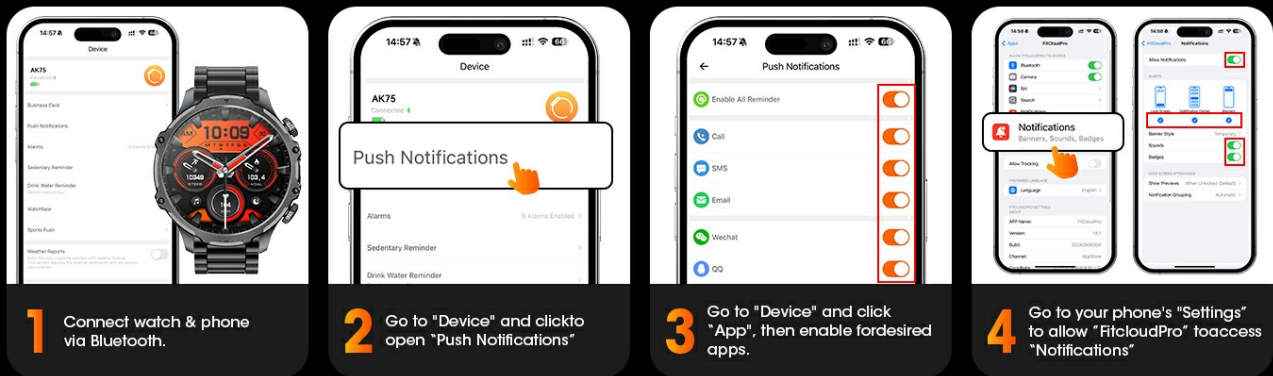
## Sports Modes and Health Tracking

The watch supports over 100 sports modes, including running, cycling, swimming, climbing, and hiking. It tracks exercise status such as steps, calories burned, and activity time, providing data to optimize your workouts. The built-in optical tracking sensor offers continuous health monitoring for heart rate, SpO2 (blood oxygen), and sleep patterns. Detailed sleep quality analysis reports (light/deep/wakeful sleep stages) are available in the app to help manage your health effectively.



Image: Overview of the 100+ sport modes available, showing how the watch tracks various exercise metrics like steps, distance, and calories.

## How to receive message or APP notification? iOS



1. Ensure the "FitCloudPro" app remains active (Android users need to add the app to the whitelist in Settings).
2. Disable "Do Not" & "Low Power Mode".
3. Message sync won't occur if the app logged into other devices or phone in the chat interface.

Image: Visual representation of the health tracking features, including real-time heart rate and blood oxygen monitoring.

## How to connect smart watch?

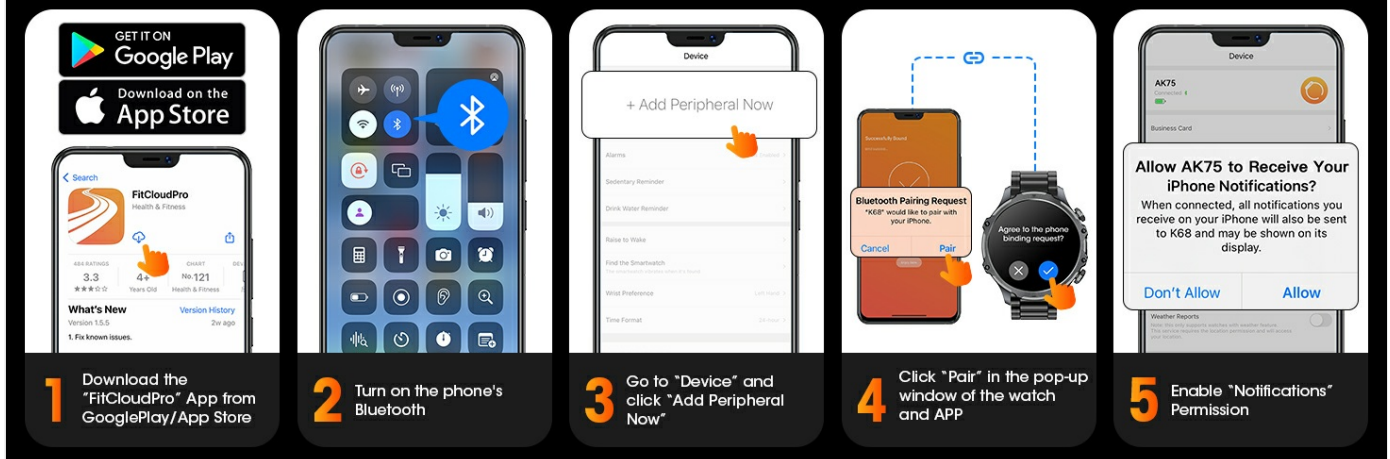


Image: Illustration of the sleep monitoring feature, showing how the watch tracks sleep duration and stages (light, deep, wakeful).

### Additional Features

- **LED Flashlight:** The watch includes an LED flashlight with a dedicated button. It offers constant and flash modes, useful for dim conditions or emergencies.



Image: Demonstration of the built-in LED flashlight feature, highlighting its utility in dark environments.

- **Voice Assistant:** Interact with your watch using voice commands for various functions.



Image: Visual showing the voice assistant feature in action, with examples of commands and responses.

- **Other Functions:** Weather forecast, alarm clock, stopwatch, countdown timer, calculator, calendar, water reminder, multi-language switching, women's health tracking, music control, brightness adjustment, and brightness duration settings.

## MAINTENANCE AND CARE

The Mingtawn Military Smart Watch is designed for ruggedness and durability, featuring IP67 waterproof rating, anti-impact, dust test, vibration test, high/low temperature test, resistant to fluid corrosion, and low pressure test.

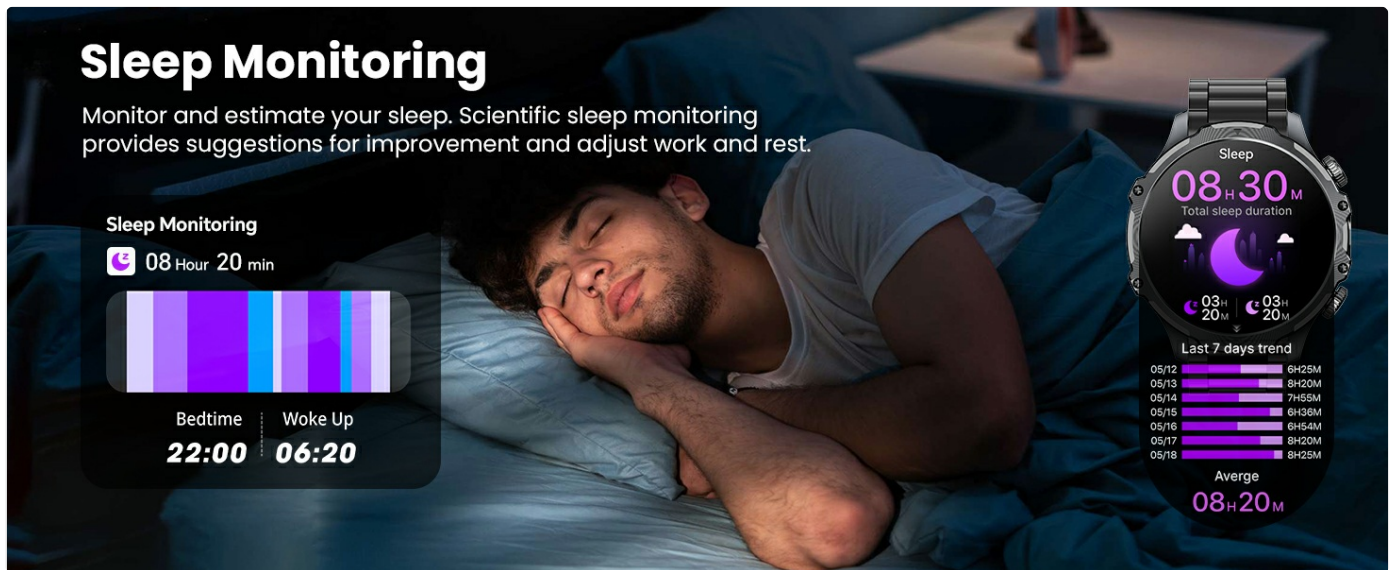


Image: Icons representing the watch's rugged features: IP67 Waterproof, Anti-Impact, Dust Test, Vibration Test, High Temperature Test, Low Temperature Test, Resistant Fluid Corrosion, Low Pressure Test.

- **Cleaning:** Wipe the watch and strap regularly with a soft, damp cloth. Avoid using harsh chemicals or abrasive materials.
- **Water Resistance:** The watch is IP67 waterproof. This means it can withstand splashes, rain, and brief immersion in water (up to 1 meter for 30 minutes). It is not recommended for hot showers, saunas, or diving.
- **Charging:** Use only the provided charging cable. Ensure the charging contacts are clean and dry before charging.
- **Storage:** Store the watch in a cool, dry place when not in use. Avoid extreme temperatures.

## TROUBLESHOOTING

Problem	Possible Cause	Solution
---------	----------------	----------

Problem	Possible Cause	Solution
Watch does not turn on.	Low battery; device malfunction.	Charge the watch for at least 30 minutes. If it still doesn't turn on, contact customer support.
Cannot pair with phone.	Bluetooth off; app not open; watch too far; interference.	Ensure Bluetooth is on for both devices. Restart both watch and phone. Keep devices close during pairing. Check app permissions.
No notifications received.	App permissions not granted; "Do Not Disturb" mode active; app not running in background.	Verify notification permissions in phone settings and FitCloudPro app. Disable "Do Not Disturb" mode. Ensure FitCloudPro is running in the background and not optimized for battery saving.
Inaccurate health data.	Watch not worn correctly; sensor obstruction.	Ensure the watch is snug but comfortable on your wrist. Clean the sensor on the back of the watch.
Short battery life.	Frequent use of power-intensive features; background apps.	Reduce screen brightness, limit continuous heart rate monitoring, close unnecessary background apps on the watch.

## SPECIFICATIONS

Feature	Detail
Model Number	AK75
Display Size	1.85 Inches HD Touch Screen
Resolution	360x360 pixels
Battery Capacity	700mAh Lithium Polymer
Battery Life	15+ days (typical use), 45+ days (standby)
Connectivity	Bluetooth 5.0
Compatibility	Android 5.1 and above, iOS 8.2 and above
Water Resistance	IP67
Memory Storage Capacity	128 MB
Operating System	Android (customized for watch)
Item Weight	10.5 ounces
Product Dimensions	4.28 x 2.68 x 0.58 inches
Manufacturer	Mingtawn
Country of Origin	China

## WARRANTY AND SUPPORT

Mingtawn is committed to providing excellent after-sales service for your smart watch.

- **24H Online Service:** Dedicated support available around the clock.
- **6 Months Returns Service:** For eligible returns within six months of purchase.
- **2 Years Guarantee:** The product is covered by a two-year guarantee from the date of purchase.

If you encounter any problems while using this product, please contact our professional service team via email. We aim to reply within 24 hours and provide the best solution.

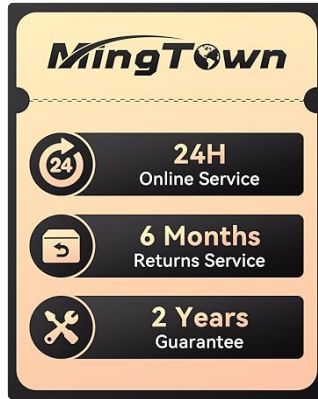


Image: Information regarding Mingtawn's 24H Online Service, 6 Months Returns Service, and 2 Years Guarantee.