



Manuals.plus /

› FEELWORLD /

› FEELWORLD T10 10.1-inch Touchscreen Camera Monitor User Manual

FEELWORLD ACT10

FEELWORLD T10 10.1-inch Touchscreen Camera Monitor User Manual

Model: ACT10

1. INTRODUCTION

The FEELWORLD T10 is a 10.1-inch touchscreen camera field monitor designed to enhance your video production workflow. It features a 1920x1200 native resolution display with 8-bit color depth, a 1500:1 contrast ratio, and a 160° viewing angle, providing clear and accurate image monitoring. This manual provides detailed instructions for setting up, operating, and maintaining your T10 monitor.

2. PACKAGE CONTENTS

Please check the package contents upon unboxing to ensure all items are present:

- 1x FEELWORLD T10 Monitor
- 1x Standard HDMI Cable
- 1x Micro HDMI Cable
- 1x U-shape Bracket
- 1x Sunshade
- 1x User Manual

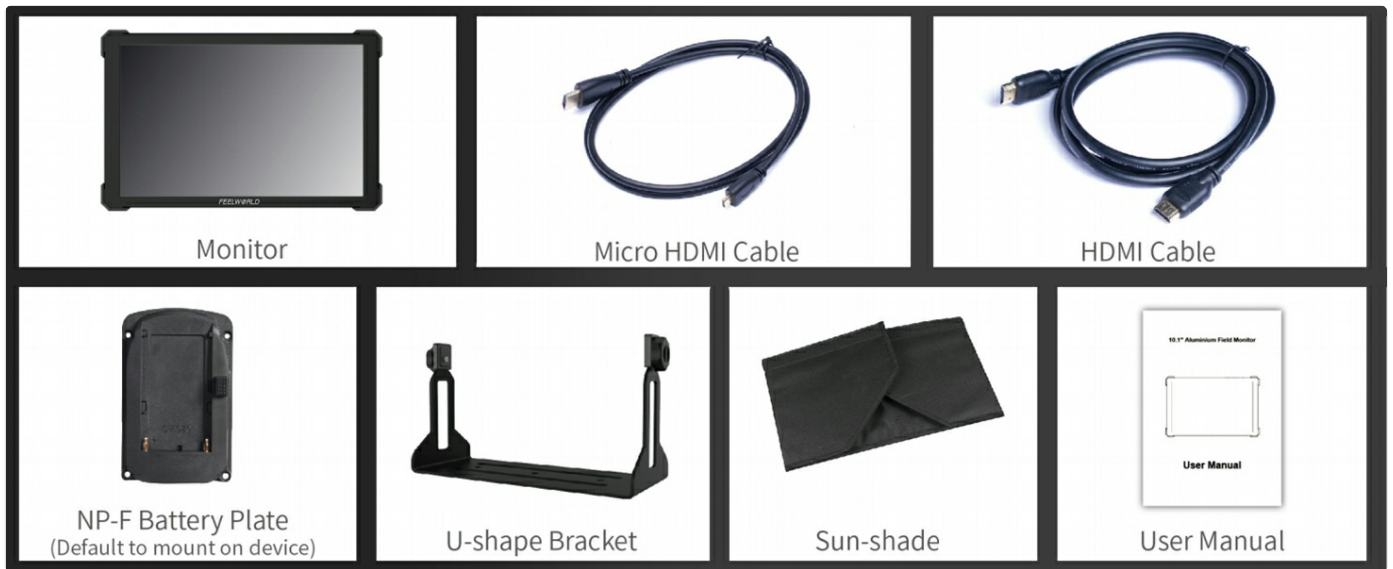


Image: All items included in the FEELWORLD T10 monitor package, laid out clearly.

3. PRODUCT FEATURES

- **10.1-inch Touchscreen Display:** Native resolution of 1920x1200, 60Hz refresh rate, 160° viewing angle, and a 1500:1 contrast ratio for clear and vivid images.
- **4K HDMI Input & Output:** Supports HDMI signals up to 4K (4096x2160/60p and 3840x2160/60p) with HDMI loop-out functionality.
- **Advanced Monitoring Functions:** Includes waveform, vector graph, luminance histogram, focus assist, audio meter, image flip, false color, ratio marker, and safe area.
- **3D LUT Support:** Import custom 3D LUTs via USB for real-time preview of color effects. Supports up to 32 custom LUTs.
- **Robust Aluminum Shell:** Durable construction with impact-resistant rubber corners for maximum durability.
- **Flexible Power Input:** Supports DC input (1.5A adapter, Barrel 5.5*2.1mm) or NP-F series batteries (e.g., F750 battery for approximately 3 hours of operation).
- **Multiple Mounting Points:** Equipped with 4 standard 1/4" mounting threads (top, bottom, right side, left side) for versatile rig and gimbal compatibility.



Image: The FEELWORLD T10 monitor showcasing its 10.1-inch display and robust design.

HDR MONITORING

Supports HDR (High Dynamic Range) monitoring, which exhibits a greater dynamic range of brightness to display brighter and darker details more clearly.



Image: A comparison of HDR monitoring on the FEELWORLD T10, showing enhanced detail in bright and dark areas.



Image: The FEELWORLD T10 demonstrating 3D LUT preview functionality, allowing users to see color grading effects in real-time.

4. SETUP

4.1 Power Connection

1. **DC Power:** Connect a 12V DC power adapter (1.5A, Barrel 5.5*2.1mm, not included) to the "DC IN 12V" port on the side of the monitor.
2. **Battery Power:** Attach a compatible NP-F series battery (e.g., F750, not included) to the F970 power plate on the back of the monitor.

4.2 HDMI Connection

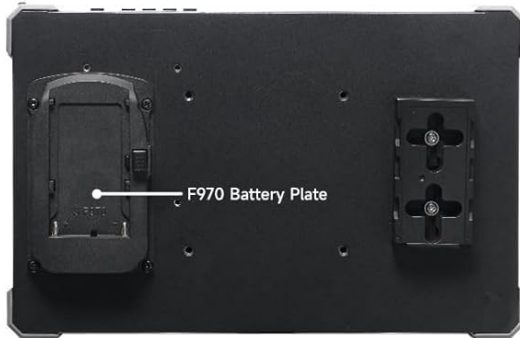
1. Connect your camera or video source to the "HDMI IN" port using the provided HDMI or Micro HDMI cable.
2. To loop out the video signal to another monitor or device, connect a second HDMI cable from the "HDMI OUT" port.

Widely Compatible for Various Camera



23.91 mm
(0.941 inch)

251.91 mm / 9.92 inch



161.91 mm / 6.37 inch



42.40 mm
(1.67 inch)

Image: Close-up view of the FEELWORLD T10's side panel, showing DC IN 12V, 3.5mm Ear Phone Slot, USB-A, HDMI IN, and HDMI OUT ports.

F970 External Power Plate Extent flexibility

This special design can attach and power on wireless transmitter and Led Lights



F970 External Power Plate

Image: The FEELWORLD T10 demonstrating its flexible power options, including DC power input and an NP-F battery plate.

5. OPERATING INSTRUCTIONS

5.1 Power On/Off

Press and hold the power button located on the top right side of the monitor to turn it on or off.

5.2 Touchscreen Controls

- **Enable/Disable Touch:** Short press the power switch to enable or disable the touch function.
- **Adjust Brightness:** Slide your finger up or down on the *left half* of the screen to adjust the backlight brightness.
- **Adjust Volume:** Slide your finger up or down on the *right half* of the screen to adjust the volume.
- **Access Main Menu:** Double-tap on the screen to open the main menu.
- **Shortcut Functions:** Swipe up from the bottom of the screen to access a row of shortcut functions.
- **Zoom:** Pinch in or out on the screen to adjust the zoom level.

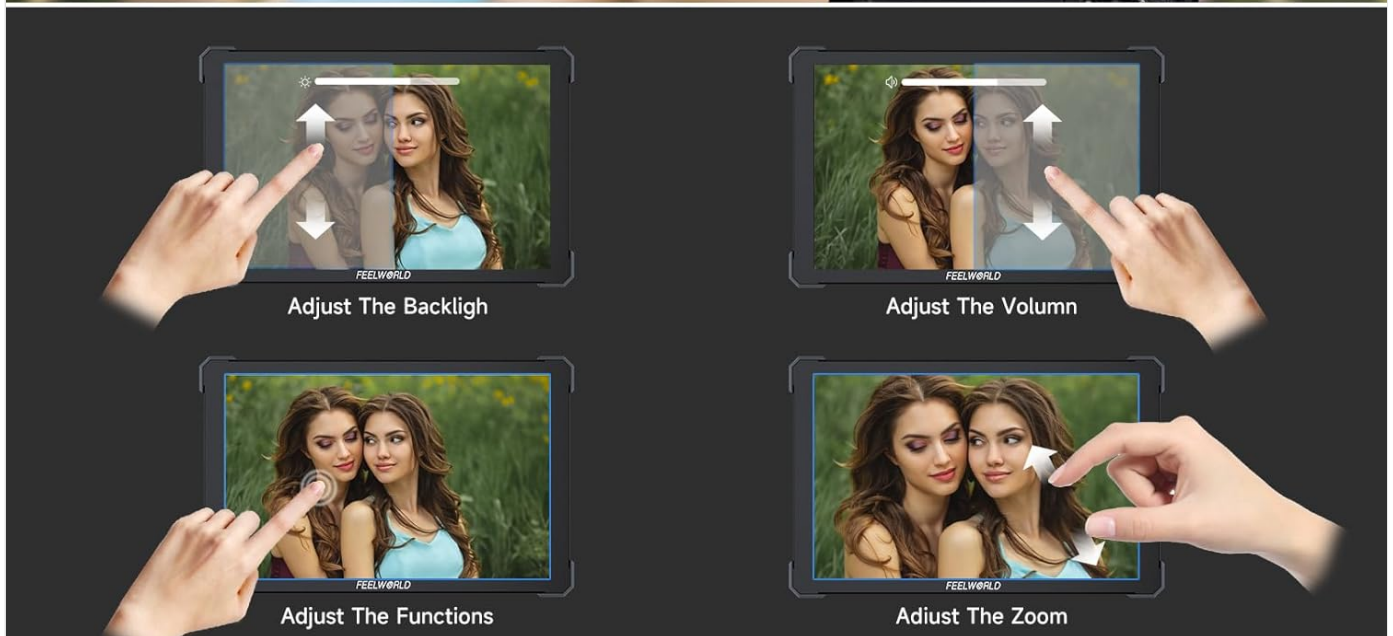


Image: The FEELWORLD T10 touchscreen displaying its menu interface and touch gestures for adjustment.

5.3 Physical Buttons

The monitor also features physical buttons for navigation and quick access to functions:

- **F1/A, F2/V:** Customizable shortcut buttons.
- **F3/EXIT:** Used to return or exit menus.
- **MENU:** Displays the OSD (On-Screen Display) main menu.
- **On/Off Button:** Power on/off the monitor.

5.4 Auxiliary Tools

The T10 monitor includes several auxiliary tools to assist with accurate monitoring:

- **Waveform:** Displays the luminance and chrominance levels of your video signal.
- **Vector Scope:** Visualizes the color information of your image.
- **Histogram:** Shows the distribution of tones in your image.

- **Focus Assist:** Highlights sharp edges to aid in achieving critical focus.
- **False Color:** Uses color overlays to represent exposure levels.
- **Audio Meter:** Monitors audio input levels.
- **Image Flip:** Flips the image horizontally or vertically.
- **Ratio Marker & Safe Area:** Provides guides for framing and safe zones.

Helps you Focus and Exposure Corretly

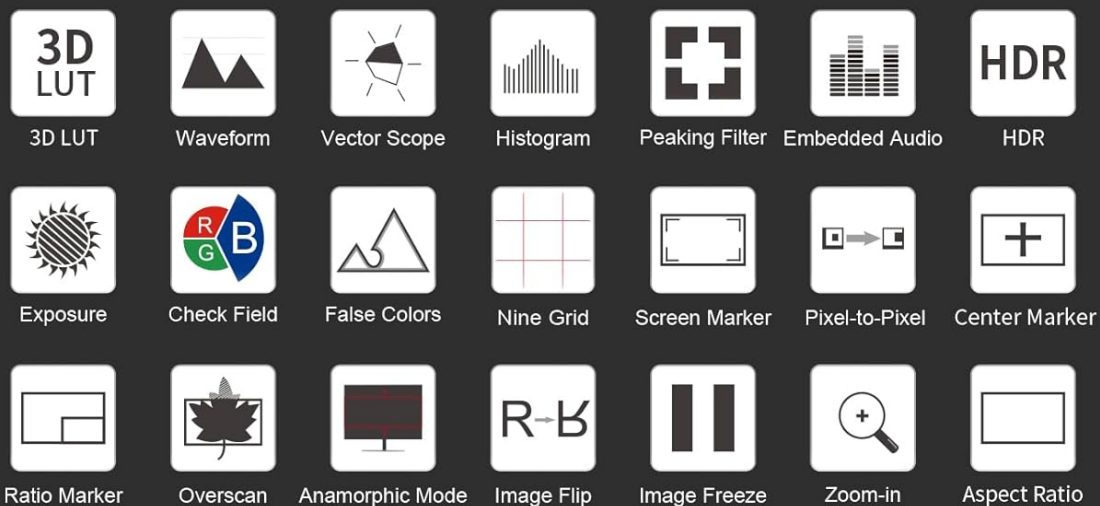


Image: The FEELWORLD T10 displaying various advanced monitoring tools such as 3D LUT, Waveform, Vector Scope, Histogram, Peaking Filter, Embedded Audio, HDR, Exposure, Check Field, False Colors, Nine Grid, Screen Marker, Pixel-to-Pixel, Center Marker, Ratio Marker, Overscan, Anamorphic Mode, Image Flip, Image Freeze, Zoom-In, and Aspect Ratio.

5.5 3D LUTs

The T10 allows you to import and apply custom 3D LUTs (Look Up Tables) for real-time color grading previews.

1. Save your .cube LUT files to a USB drive.
2. Insert the USB drive into the USB-A port on the monitor.
3. Navigate to the LUT menu option and select "LUT Import" to load your custom LUTs. The monitor supports up to 32 custom

HDR Monitoring



HDR OFF

HDR ON

10.1
Inch

FHD
1920x1200

500nit
Brightness

8bit
Color Depth

1500:1
Contrast

160°
Viewing Angle

Image: The FEELWORLD T10 demonstrating the process of importing custom 3D LUTs via USB and applying them for real-time color preview.

6. CONNECTIVITY

- **HDMI IN:** Connect your camera or video source.
- **HDMI OUT:** Loop out the HDMI signal to another display or device.
- **USB-A:** Used for importing 3D LUTs and firmware updates.
- **3.5mm Earphone Jack:** For audio monitoring.

7. MOUNTING OPTIONS

The FEELWORLD T10 is designed for versatile mounting:

- **1/4" Mounting Threads:** Four standard 1/4" mounting threads are located on the top, bottom, right, and left sides of the monitor for attaching to camera rigs, gimbals, or other accessories.
- **U-shape Bracket:** The included U-shape bracket provides a stable desktop stand or can be mounted to a light stand.
- **F970 Power Plate:** The F970 power plate on the back can also be used to mount compatible accessories like wireless transmitters or LED lights, simplifying your setup.

FLEXIBLE POWER SUPPLY

The T10 can accept 12V DC power or be powered by NP-Fseries batteries.

Note: Package does not include battery and power adapter.

DC Power Supply



NP-F Battery Plate
(Standard)



Lithium Battery (NP-F Series)Compatible Battery:
F970F960 F950 F930 F770 F750F730 F570 F550 F530 Series



Image: The FEELWORLD T10's F970 external power plate, showing how it can be used to attach and power wireless transmitters and LED lights.

Multi Mounting Points Widely Compatible For Rigs And Gimbals

The monitor is equipped with 4 standard 1/4 " mounting threads (top, bottom, right side, left side),






Image: The FEELWORLD T10 highlighting its multiple 1/4" mounting points for compatibility with various rigs and gimbals.

8. MAINTENANCE

- Keep the monitor clean by wiping it with a soft, dry cloth. Avoid using harsh chemicals or abrasive materials.
- Protect the screen from scratches and impacts. Use the included sunshade for added protection and glare reduction.
- Store the monitor in a cool, dry place when not in use.
- Ensure proper ventilation during operation to prevent overheating.

9. TROUBLESHOOTING

9.1 No Power

- Check if the DC power adapter is securely connected and providing 12V.
- If using a battery, ensure it is fully charged and correctly installed on the F970 plate.
- Verify the power button is pressed and held until the monitor powers on.

9.2 No Video Signal

- Ensure the HDMI cable is securely connected to both the camera/source and the monitor's "HDMI IN" port.
- Check the output settings of your camera/video source to ensure it is sending an HDMI signal.
- Try a different HDMI cable to rule out cable issues.

9.3 Touchscreen Unresponsive

- Short press the power switch to ensure the touch function is enabled.
- Restart the monitor.

10. SPECIFICATIONS

Brand	FEELWORLD
Model Number	ACT10
Screen Size	10.1 Inches
Native Resolution	1920 x 1200
Aspect Ratio	16:10
Contrast Ratio	1500:1
Viewing Angle	160 Degrees
Connectivity Technology	HDMI
Total Number of HDMI Ports	1 (Input), 1 (Output)
Power Input	DC 12V, NP-F Battery Plate
Color	Black/Silver

11. WARRANTY

The FEELWORLD T10 monitor comes with a **1-year manufacturer's warranty**. Please retain your proof of purchase for warranty claims. For detailed warranty terms and conditions, refer to the official FEELWORLD website or contact customer support.

12. SUPPORT

For further assistance, technical support, or service inquiries, please visit the official FEELWORLD website or contact their customer service department. You can often find FAQs, firmware updates, and additional resources online.

13. OFFICIAL PRODUCT VIDEO

Your browser does not support the video tag.

Video: An official product video demonstrating the key features and operation of the FEELWORLD T10 10.1-inch touchscreen camera monitor, including touch controls, menu navigation, and connectivity options.

