

[Manuals.plus](#) /

> [UKLISS](#) /

> UKLISS 6-in-1 Ionic Air Styler and Blow Dryer Brush Instruction Manual

UKLISS B0DSVLHJT4

UKLISS 6-in-1 Ionic Air Styler and Blow Dryer Brush Instruction Manual

Model: B0DSVLHJT4

1. INTRODUCTION

Thank you for choosing the UKLISS 6-in-1 Ionic Air Styler and Blow Dryer Brush. This versatile styling tool is designed to provide multiple hair styling options with a single device. Please read this manual thoroughly before use to ensure safe and effective operation.



This image displays the main handle of the UKLISS 6-in-1 Air Styler along with its six interchangeable attachments: a hair dryer head, a smoothing hot hair brush, two auto-wrap air curlers, a volumizing hot air brush, and a hot thermal brush. A heat-resistant glove is also shown.

Package Contents:

- Main Styler Handle
- Hair Dryer Head
- Smoothing Hot Hair Brush
- 2 x 30.5mm Auto-Wrap Air Curlers (Left and Right)
- Volumizing Blow Dryer Brush
- Daily Hot Round Brush
- Heat-Resistant Glove

6 in 1 Hair Brush Dryer Set



Air hair wrap L/R curling iron

30.5mm hair curler
coanda effect
for natural curls



Hair dryer head

Pre-dry to style hair



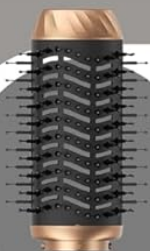
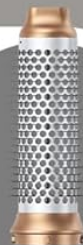
Smoothing hot hair brush

Hair straightening hair
style increase shiny



Hot thermal brush

Middle Wave curler
& loose curls (with wind)



Volumizing hot air brush

Volumizing bangs &
the root of hair style



A visual guide detailing each of the six attachments included in the set: air hair wrap L/R curling irons, hair dryer head, smoothing hot hair brush, hot thermal brush, and volumizing hot air brush, with a brief description of their use.

2. IMPORTANT SAFETY INFORMATION

To ensure safe operation and prevent injury or damage, please adhere to the following precautions:

- Always wear the provided heat-resistant gloves when changing attachments to prevent burns.

- Allow the brush and attachments to cool completely before cleaning or storing.
- Avoid direct contact with the bristle area and heating elements, as they become hot during use.
- Ensure the styler is completely dry before use. Do not use it in water or other liquids.
- This appliance is equipped with an ALCI (Appliance Leakage Current Interrupter) safety plug. Test the ALCI plug before each use by pressing the 'TEST' button, then the 'RESET' button. If it does not reset, do not use the appliance.
- Keep out of reach of children.
- Do not operate if the cord or plug is damaged.



An annotated diagram of the UKLISS Air Styler's main handle, pointing out key components such as the anti-scalding head, air wrapping barrel, locking accessory head, air inlet, 360-degree rotating power cord, and the ALCI safety plug. It also details the three temperature settings: Low (50°C/122°F), Mid (80°C/176°F), and High (105°C/221°F).

3. SETUP AND ASSEMBLY

The UKLISS Air Styler features a detachable design for easy attachment changes and portability.

Attaching Accessories:

1. Ensure the main unit is unplugged and cool.
2. Press and hold the lock button on the main unit and push it downward to unlock the attachment mechanism.
3. Align the desired accessory with the main unit and insert it.
4. Rotate the accessory clockwise until it clicks into place, ensuring it is securely locked.

Removing Accessories:

1. Ensure the main unit is unplugged and cool.
2. Wear the heat-resistant glove.
3. Press and hold the lock button and push it downward to unlock.
4. Gently pull the accessory away from the main unit.

Provides hair with natural shine

In depth scalp care and hair nourishment



Millions of negative ions neutralize the charge to smooth hair and help to reduce drying time and minimize heat damage to the hair.

- ✓ **Protect hair scales**
- ✓ **Strong hair core**
- ✓ **Reduce root damage**



A step-by-step visual guide on how to install the various attachments onto the main unit. It shows pressing the lock button, aligning and inserting the accessory, rotating to lock, and removing the accessory while wearing heat-insulating gloves.

4. OPERATING INSTRUCTIONS

Before styling, ensure your hair is clean and towel-dried to a semi-wet state for optimal results, especially with curling attachments.

Power and Temperature Settings:

Plug the ALCI safety plug into a standard 110V AC outlet. Press the 'RESET' button on the plug if necessary. Use the switch on the main handle to select your desired setting:

- **Low (50°C/122°F):** Suitable for fine, delicate, or damaged hair. Provides gentle drying and styling.
- **Mid (80°C/176°F):** Ideal for creating long-lasting styles and for normal hair types.
- **High (105°C/221°F):** Best for coarse, thick, or pre-dried hair requiring faster styling.

The device operates with one constant wind speed across all temperature settings.



This image illustrates the three temperature settings (Low, Middle, High) and one wind speed setting available on the UKLISS Air Styler. It also suggests optimal uses for each setting based on seasons: cool wind for summer, hot air for winter, and warm air for spring.

Using the Attachments:

Hair Dryer Head:

Use this attachment to pre-dry your hair to about 80% dry before applying other styling attachments. It provides efficient airflow for quick drying.

3 Temp Constant Temp Hair Dryer

1 wind speed, no speed change, no hair tangling troubles

122-221°F constant temperature drying, suitable for all hair types, no need to worry about damaging your hair



A woman is shown using the hair dryer head attachment, with visual effects indicating constant temperature airflow. This attachment is designed for pre-drying hair before styling.

Smoothing Hot Hair Brush:

This brush is designed to smooth hair and reduce frizz, creating a sleek finish. It is most effective on semi-wet hair. Note that it helps to smooth but does not directly straighten naturally curly hair.

Blow Dryer Hair Smoothing Brush

Apply oil to wet hair and use a detangling brush to keep hair smooth and silky all day long



It gives you smooth hair, but it cannot directly achieve the effect of straightening curly hair.

A user is shown applying the smoothing hot hair brush to her hair. The image clarifies that this brush helps create a smooth styling effect and reduce frizz, but does not directly straighten curly hair.

Auto-Wrap Air Curlers (Left and Right):

These curlers use high-speed airflow to automatically wrap hair around the barrel, creating curls. Use on semi-wet hair for best results.

1. Take a small section of semi-wet hair.

2. Hold the curling iron close to the hair section; the air will automatically absorb and wrap the hair around the barrel.
3. Hold for approximately 10 seconds. For better fixation, switch to a cool air setting (if available) for 3 seconds before releasing.
4. Turn off the machine, then gently pull down to release the curl. Apply mousse or styling spray to prolong the style.

1.34" Left/Right Automatic Curl

Adopt air adsorption wrapping technology to **automatically adsorb hair and create natural curls**

Use on half wet hair; style with hot air first, then cool air for better fixation



Left curly hair

Right curly hair



This image shows a user styling her hair with the 1.34-inch auto-wrap air curler. It highlights the air adsorption wrapping technology for creating natural curls, with examples of both left and right curly hair results.



Detailed instructions for achieving curls using the auto-wrap curlers. Steps include taking semi-wet hair, holding it near the curling iron for automatic absorption, holding for 10 seconds, using cold air for fixation, and applying styling spray.

Volumizing Blow Dryer Brush:

This brush is designed to add volume to your hair, especially at the roots and for bangs. It helps create a fuller, more dynamic hairstyle.

Daily Hot Round Brush:

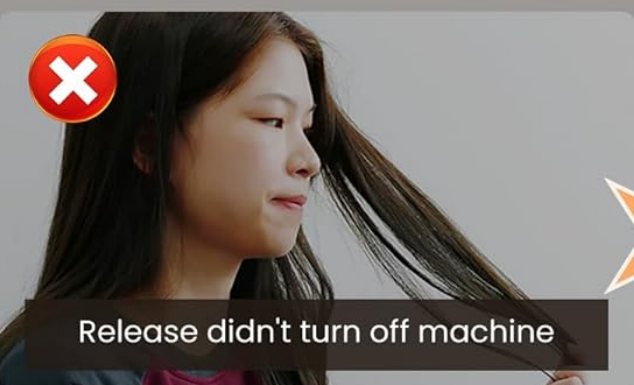
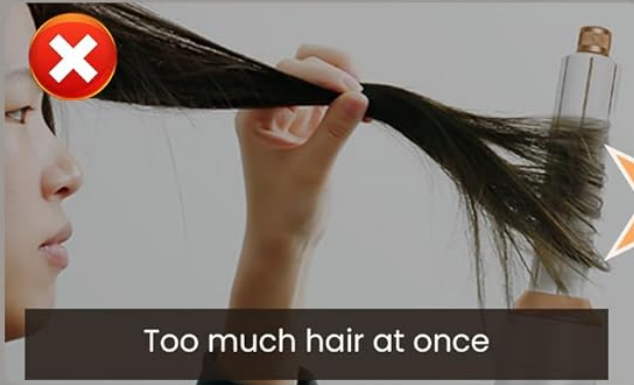
Use this brush for creating natural waves, soft curls, or shaping bangs. It provides gentle heat and airflow for versatile styling.

General Styling Tips:

- Do not take too much hair at once; work with small sections for better results.
- When curling, start from the hair tips and allow the hair to wrap up towards the roots.
- Remove attachments slowly and gently to maintain the style.
- Always turn off the machine before releasing a curl or changing attachments.

Incorrect use

Correct use



This visual guide demonstrates common mistakes and correct techniques when using the curling attachments. It advises on sectioning hair, starting curls from tips, removing slowly, and turning off the machine before releasing curls.

5. MAINTENANCE AND CARE

Proper maintenance ensures the longevity and performance of your UKLISS Air Styler.

- **Cleaning:** Always unplug the device and allow it to cool completely before cleaning. Wipe the main unit and attachments

with a slightly damp cloth. Do not use harsh chemicals or abrasive cleaners.

- **Storage:** Store the styler and its attachments in a cool, dry place. The detachable design allows for compact storage.
- **Cord Care:** Do not wrap the power cord tightly around the appliance. Avoid twisting or kinking the cord, as this can cause damage.

6. TROUBLESHOOTING

If you encounter issues with your UKLISS Air Styler, please refer to the following common solutions:

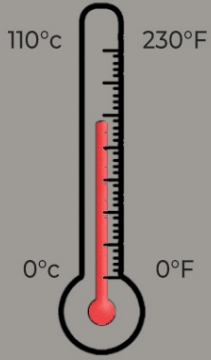
Problem	Possible Cause	Solution
Device does not turn on	Not plugged in correctly; ALCI tripped; Power outlet issue	Ensure the plug is fully inserted. Press the 'RESET' button on the ALCI plug. Test the outlet with another appliance.
Attachments are loose or fall off	Attachment not locked properly	Ensure the attachment is aligned and rotated clockwise until it clicks securely into place.
Hair is not curling effectively	Hair too wet/dry; Section too large; Incorrect technique	Ensure hair is semi-wet. Use smaller sections. Review the 'Correct Usage' guide for curling technique.
Device smells or smokes	Overheating; Debris in air inlet; Internal fault	Immediately unplug the device. Allow it to cool. Check air inlet for blockages. If the issue persists, discontinue use and contact customer support.

7. SPECIFICATIONS

Feature	Detail
Model	B0DSVLHJT4
Brand	UKLISS
Power Source	Corded Electric
Voltage	110V AC
Wattage	800W
Material	Plastic, Aluminum Alloy
Color	White
Product Dimensions	12 x 12 x 3 inches
Product Weight	2.27 Pounds
Cord Length	2M
Temperature Settings	3 (50°C/122°F, 80°C/176°F, 105°C/221°F)
Wind Speed Settings	1 Constant Speed

3 TEMPERATURE| 1 WIND SPEED

One Key Hot & Cold Alternating Mode



- SUMMER** Cool wind and cool shape
- WINTER** Hot air heating and quick drying
- SPRING** Warm air constant temperature hair care

Temperature&Wind Speed
1 LOW: lowtemperature 50°C
2 MIDDLE: mediumtemperature 80°C
3 HIGH: hightemperature 110°C
1 Wind Speed: High wind speed



This image provides a table of product attributes including accessories count, color, wind speed, temperature, voltage, material, wattage, cord length, and package size. It also shows detailed dimensions for the main unit and each accessory.

8. WARRANTY AND SUPPORT

Specific warranty information for the UKLISS 6-in-1 Ionic Air Styler and Blow Dryer Brush is not provided in the product details. For warranty claims, technical support, or further assistance, please refer to the contact information provided with your purchase or visit the official UKLISS website.