

Manuals.plus /

› GHCFWKU /

› GHCFWKU Replacement Left Wheel Motor for Vileda VR ONE Robot Vacuum Cleaner

GHCFWKU VR ONE

GHCFWKU Replacement Left Wheel Motor for Vileda VR ONE Robot Vacuum Cleaner

Model: VR ONE Compatible Part (lizi22543lam)

Brand: GHCFWKU

INTRODUCTION

This manual provides detailed instructions for the installation and care of your new GHCFWKU replacement left wheel motor, designed for compatibility with the Vileda VR ONE robot vacuum cleaner. Please read this manual thoroughly before installation to ensure correct procedure and optimal performance of your device.

SAFETY INFORMATION

- Always disconnect the robot vacuum cleaner from its power source before attempting any installation or maintenance.
- Use appropriate tools for installation. Avoid forcing components, which may cause damage.
- Keep small parts away from children to prevent choking hazards.
- If you are unsure about any step, consult a qualified technician or contact customer support.

PACKAGE CONTENTS

Verify that all items are present and undamaged upon opening the package.

- 1 x GHCFWKU Left Wheel Motor Assembly (Compatible with Vileda VR ONE)



Image: The complete GHCFWKU Left Wheel Motor Assembly.

SETUP (INSTALLATION)

Follow these steps to replace the left wheel motor on your Vileda VR ONE robot vacuum cleaner:

1. **Power Off and Disconnect:** Ensure your Vileda VR ONE robot vacuum cleaner is completely powered

off and disconnected from its charging base or any power adapter.

2. **Access the Wheel Compartment:** Carefully turn the robot vacuum cleaner upside down. Locate the screws securing the bottom cover or the wheel module. Use an appropriate screwdriver to remove these screws.
3. **Remove the Old Wheel Motor:** Gently disconnect any wiring connected to the old wheel motor. Carefully lift and remove the old wheel motor assembly from its housing. Note its orientation for correct installation of the new part.

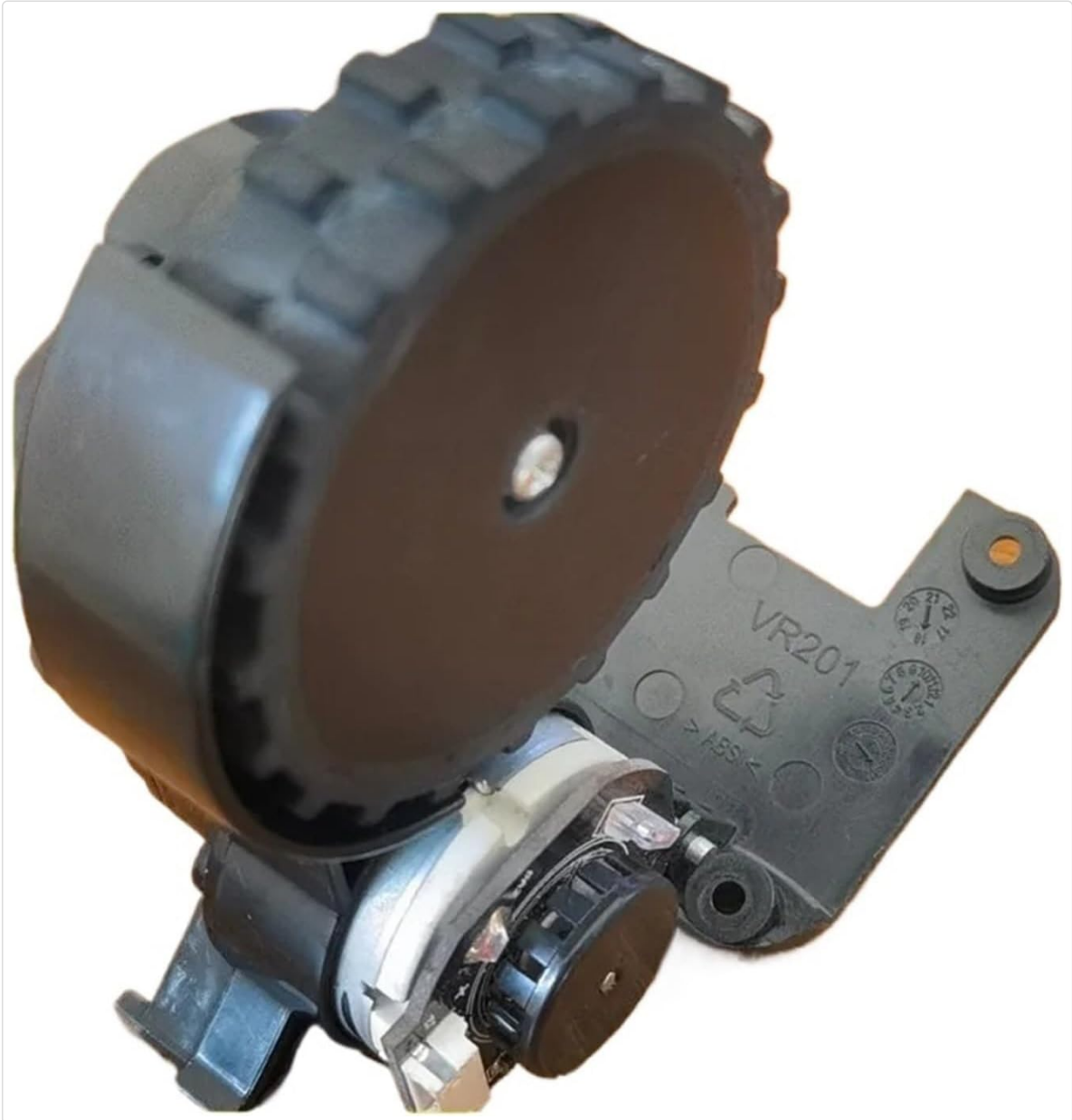


Image: View of the wheel motor and its connection points.

4. **Install the New Wheel Motor:** Connect the wiring from the robot vacuum to the new GHCFWKU left wheel motor assembly. Ensure all connections are secure and correctly aligned. Place the new wheel motor assembly into its designated housing, matching the orientation of the old part.



Image: Detailed view of the GHCFWKU wheel motor assembly, ready for installation.

5. **Reassemble:** Carefully replace the bottom cover and secure it with the screws removed earlier. Ensure all components are properly aligned and no wires are pinched.
6. **Test Functionality:** Place the robot vacuum cleaner back on its wheels. Power it on and perform a test run to confirm the new wheel motor is functioning correctly and the robot moves smoothly.

OPERATING

Once the new left wheel motor is correctly installed, the Vileda VR ONE robot vacuum cleaner should operate as intended, with smooth movement and navigation. The wheel motor's function is integrated into the robot's existing system, and no special operating procedures are required for the motor itself. Continue to operate your robot vacuum cleaner according to its original user manual.

MAINTENANCE

To ensure the longevity and optimal performance of your new wheel motor, regular maintenance is

recommended:

- **Inspect for Debris:** Regularly inspect the wheel and its axle for any accumulated debris such as hair, dust, or threads. These can impede movement and strain the motor.
- **Cleaning:** Use a small brush, cloth, or compressed air to gently remove any debris. Avoid using excessive force.
- **Check Free Rotation:** Ensure the wheel rotates freely without resistance. If resistance is felt, check for obstructions that may not be immediately visible.
- **Avoid Moisture and Chemicals:** Do not expose the wheel motor to excessive moisture or harsh cleaning chemicals, as this can damage internal components.

TROUBLESHOOTING

If you encounter issues after installing the new wheel motor, refer to the following common troubleshooting steps:

- **Wheel Not Moving:**
 - Check for any visible obstructions around the wheel.
 - Ensure the wheel motor is securely connected to the robot's wiring and that all connections are intact.
 - Verify that the wheel is properly seated in its housing.
 - If the issue persists, the motor itself may be faulty or there might be an underlying issue with the robot's main board.
- **Unusual Noise from Wheel:**
 - Inspect thoroughly for any small debris caught within the wheel mechanism that might be causing friction.
 - Ensure the wheel is properly seated and not rubbing against any part of the robot's chassis.
 - If noise continues after cleaning and re-seating, the motor's internal gears or bearings might be worn.
- **Robot Movement Issues (e.g., veering, uneven movement):**
 - Verify that both the newly installed left wheel and the right wheel are rotating correctly and with similar speed.
 - Ensure the new wheel motor is installed symmetrically and is not causing an imbalance.
 - Check the robot's sensors, as movement issues can sometimes be related to navigation rather than just the wheels.

SPECIFICATIONS

Feature	Detail
Model Compatibility	Vileda VR ONE Robot Vacuum Cleaner
Part Model Number	lizi22543lam
Type	Left Wheel Motor Assembly
Material	Sturdy and wear-resistant materials
Approximate Dimensions	1.18 x 0.79 x 0.39 inches (L x W x H)
Approximate Item Weight	1.76 ounces (50 Grams)
Color	Black

WARRANTY AND SUPPORT

For warranty information or technical support regarding your GHCFWKU replacement left wheel motor, please contact your retailer or the manufacturer directly. Refer to your purchase documentation or the product packaging for specific contact details and warranty terms.