

[manuals.plus](#) /

› [Monster](#) /

› [Monster Open Ear AC312 Headphones, Bluetooth 5.4, Wireless Earbuds with ENC Noise-Cancelling Mic, Immersive Stereo Sound by 16mm Large Drivers, Clear Calls, 32H Playtime, Sport Earbuds for Gym](#)

Monster E35

Monster Open Ear AC312 Headphones

USER MANUAL

Introduction

Thank you for choosing the Monster Open Ear AC312 Headphones. These wireless earbuds are designed to provide an immersive stereo sound experience with 16mm large drivers, clear calls facilitated by ENC noise-cancelling microphone technology, and extended playtime. With Bluetooth 5.4 connectivity, they offer a stable and efficient audio solution for daily use, sports, and more.

Package Contents

Upon opening your Monster Open Ear AC312 Headphones package, please ensure all components are present:

- Monster Open Ear AC312 Earbuds (Left and Right)
- Charging Case
- USB-C Charging Cable
- User Manual (this document)



Image: The Monster Open Ear AC312 Headphones, consisting of two earbuds and their accompanying charging case, displayed in their original packaging configuration.

Setup and Charging

Initial Charging

Before first use, fully charge your Monster Open Ear AC312 Headphones. Place both earbuds into the charging case. Connect the USB-C charging cable to the charging port on the case and the other end to a compatible USB power source. The indicator light on the charging case will show the charging status. A full charge provides up to 32 hours of total playback time with the charging case.

Extra Long Playback up to 32 Hours

400 mAh

32 Hours



Image: The Monster Open Ear AC312 Headphones and their charging case, illustrating the impressive 32-hour total playback time and 400mAh battery capacity.

Pairing with Your Device

1. Ensure the earbuds are charged and placed inside the charging case.
2. Open the charging case lid. The earbuds will automatically enter pairing mode, indicated by a flashing light on the earbuds or case.
3. On your device (smartphone, tablet, etc.), go to the Bluetooth settings.
4. Search for "Monster AC312" or similar in the list of available devices.
5. Select "Monster AC312" to connect. Once connected, a voice prompt will confirm the successful pairing, and the indicator light will stop flashing.
6. If pairing fails, close the case, wait a few seconds, and repeat the steps.

Operating Instructions

Wearing the Earbuds

The Monster Open Ear AC312 Headphones are designed for comfortable, all-day wear with an open-ear design. Gently place the earbud over your ear, ensuring the ear hook rests securely behind your ear and the speaker portion is positioned comfortably near your ear canal without entering it. This design allows you to enjoy audio while remaining aware of your surroundings.



Open Ear Comfort

Air conduction earbuds - Wear all day without getting tired

Ergonomic ear hook

Ultra-light

Soft silicone

Image: A person wearing the Monster Open Ear AC312 Headphones, demonstrating the comfortable and secure fit of the open-ear design, highlighting ergonomic ear hooks, ultra-light construction, and soft silicone materials.

Basic Controls

The earbuds feature touch-sensitive controls for easy management of your audio and calls. Specific touch gestures may vary slightly, but common functions include:

- **Play/Pause:** Single tap on either earbud.
- **Next Track:** Double tap on the right earbud.
- **Previous Track:** Double tap on the left earbud.
- **Answer/End Call:** Single tap on either earbud during an incoming call.

- **Reject Call:** Press and hold on either earbud during an incoming call.
- **Activate Voice Assistant:** Triple tap on either earbud (e.g., Siri, Google Assistant).

Crystal Clear Calls with ENC

The Monster Open Ear AC312 Headphones are equipped with Environmental Noise Cancelling (ENC) technology. This feature accurately picks up your voice and filters out ambient noise, ensuring flawless hands-free calls even in noisy environments.



Image: A person smiling while using the Monster Open Ear AC312 Headphones, illustrating the clear call quality enabled by ENC noise-cancelling technology that accurately picks up voice for flawless hands-free communication.

Situational Awareness

The open-ear design of these headphones is specifically engineered to allow you to enjoy your music or calls while remaining fully aware of your surroundings. This is particularly beneficial for outdoor activities such as cycling, running, or walking in urban environments, enhancing safety by allowing you to hear traffic, announcements, and other important sounds.

Aware of Danger

Enjoys music while
staying aware of
surroundings

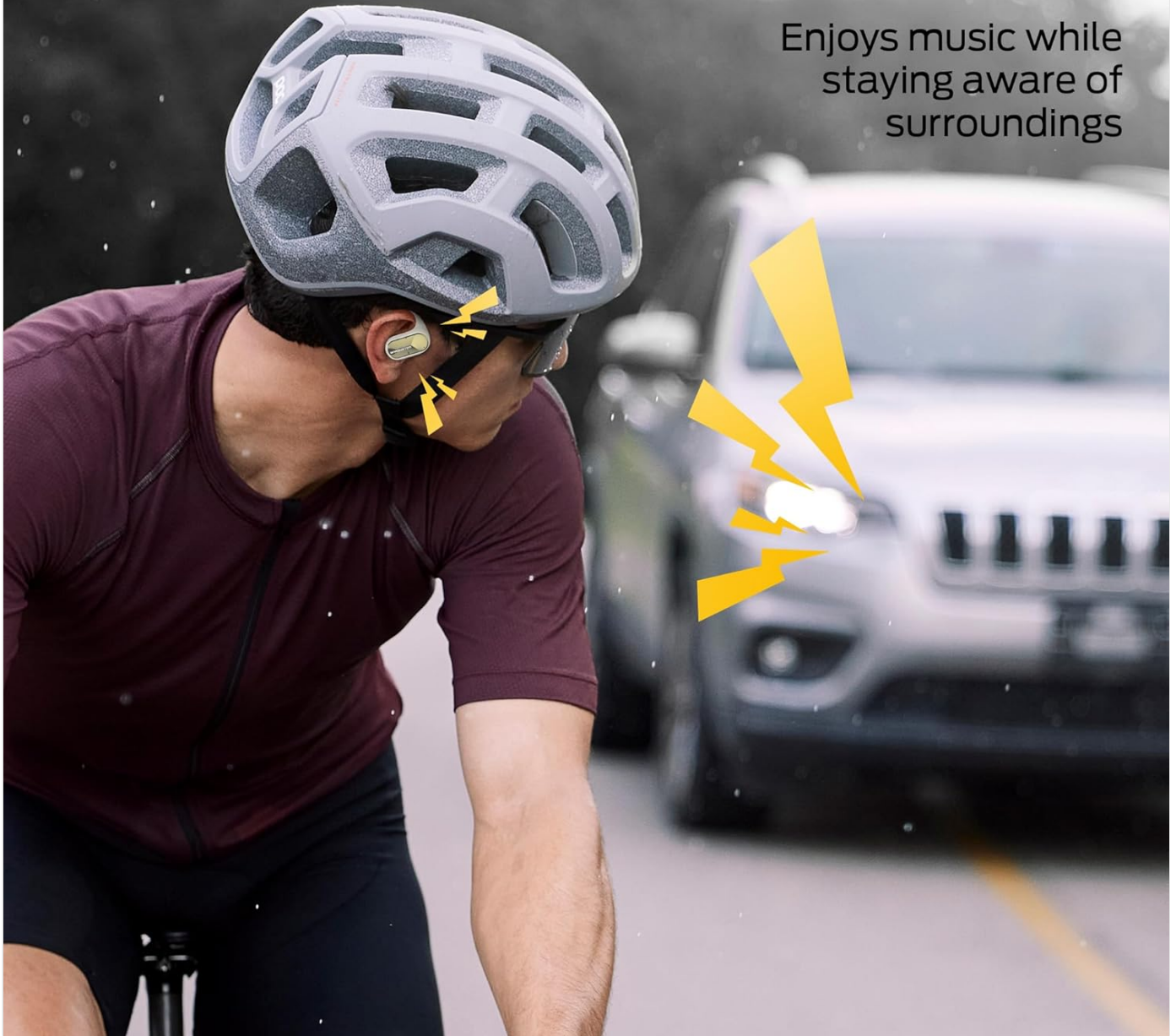


Image: A cyclist wearing the Monster Open Ear AC312 Headphones, demonstrating how the open-ear design allows them to enjoy music while remaining aware of potential dangers, such as an approaching car, enhancing safety during outdoor activities.

Maintenance and Care

Cleaning Your Earbuds

To maintain optimal performance and hygiene, regularly clean your earbuds and charging case. Use a soft, dry, lint-free cloth to wipe down the surfaces. For stubborn dirt, a slightly damp cloth can be used, but ensure no moisture enters any openings. Do not use abrasive cleaners or solvents.

Water Resistance (IPX5)

The Monster Open Ear AC312 Headphones feature an IPX5 water resistance rating. This means they are protected against low-pressure water jets from any direction, making them suitable for sports, exercise, running, cycling, hiking, and other activities where they might be exposed to sweat or light rain. **Note:** IPX5 rating does not mean they are waterproof. Do not submerge the earbuds in water or expose them to heavy rain or strong water jets.

IPX5 Water Resistance

Widely suitable for sports, exercise, running, cycling, hiking, driving, working, etc.

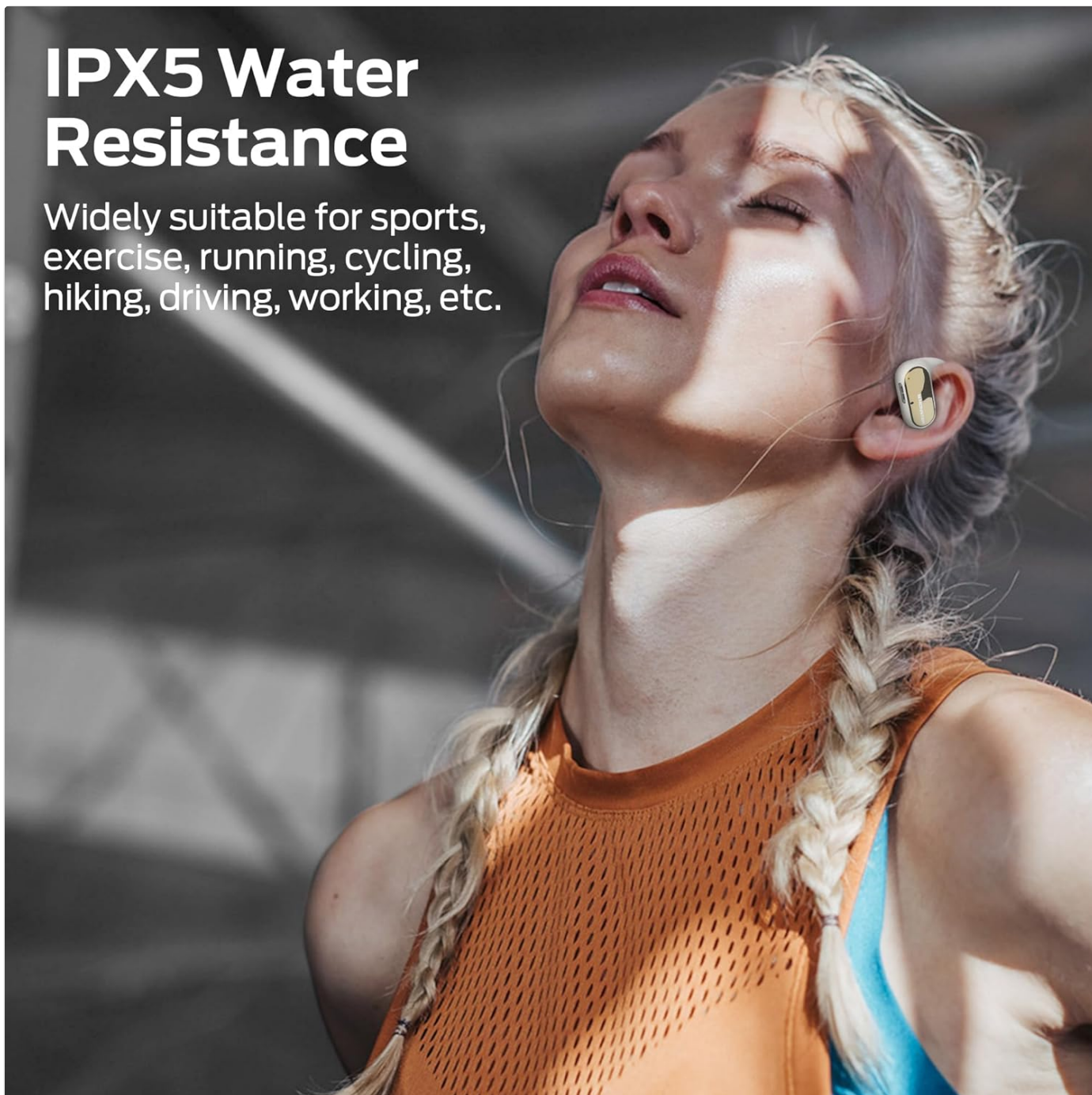


Image: A person engaged in exercise while wearing the Monster Open Ear AC312 Headphones, emphasizing their IPX5 water resistance, which makes them widely suitable for various activities like sports, running, cycling, hiking, driving, and working.

Storage

When not in use, store your earbuds in their charging case to protect them and keep them charged. Store the case and earbuds in a cool, dry place away from extreme temperatures and direct sunlight.

Troubleshooting

If you encounter any issues with your Monster Open Ear AC312 Headphones, please refer to the following common solutions:

Problem	Solution
Earbuds not pairing	Ensure earbuds are charged. Place them back in the case, close the lid, wait 5 seconds, then open to re-enter pairing mode. Check your device's Bluetooth settings and try reconnecting.

Problem	Solution
No sound from one earbud	Ensure both earbuds are charged. Try placing both back in the case, closing the lid, and then taking them out again. Re-pair if necessary.
Poor sound quality	Check the audio source. Ensure earbuds are within Bluetooth range of your device. Clean the speaker mesh if necessary.
Earbuds not charging	Ensure the charging cable is securely connected to both the case and the power source. Try a different USB-C cable or power adapter. Clean the charging contacts on the earbuds and inside the case.
Bluetooth connection unstable	Move closer to your device. Avoid environments with strong Wi-Fi or other wireless interference. Ensure no physical obstructions are between the earbuds and your device. The upgraded Bluetooth 5.4 provides a more stable connection.

Specifications

Below are the technical specifications for the Monster Open Ear AC312 Headphones:

Feature	Detail
Model Name	Monster Open Ear AC312 Headphones
Item Model Number	E35
Brand	Monster
Connectivity Technology	Wireless (Bluetooth 5.4)
Headphones Form Factor	Open Ear
Drivers	16mm Large Drivers
Microphone	ENC Noise-Cancelling Mic
Battery Life	Up to 32 hours (with charging case)
Water Resistance	IPX5
Color	Black
Package Dimensions	13.21 x 11.4 x 4.7 cm
Item Weight	181 g
Batteries	1 A battery required (included)
Included Components	Earbuds

Upgraded Bluetooth 5.4



Faster than the last generation



Longer transmission distance



More stable connection

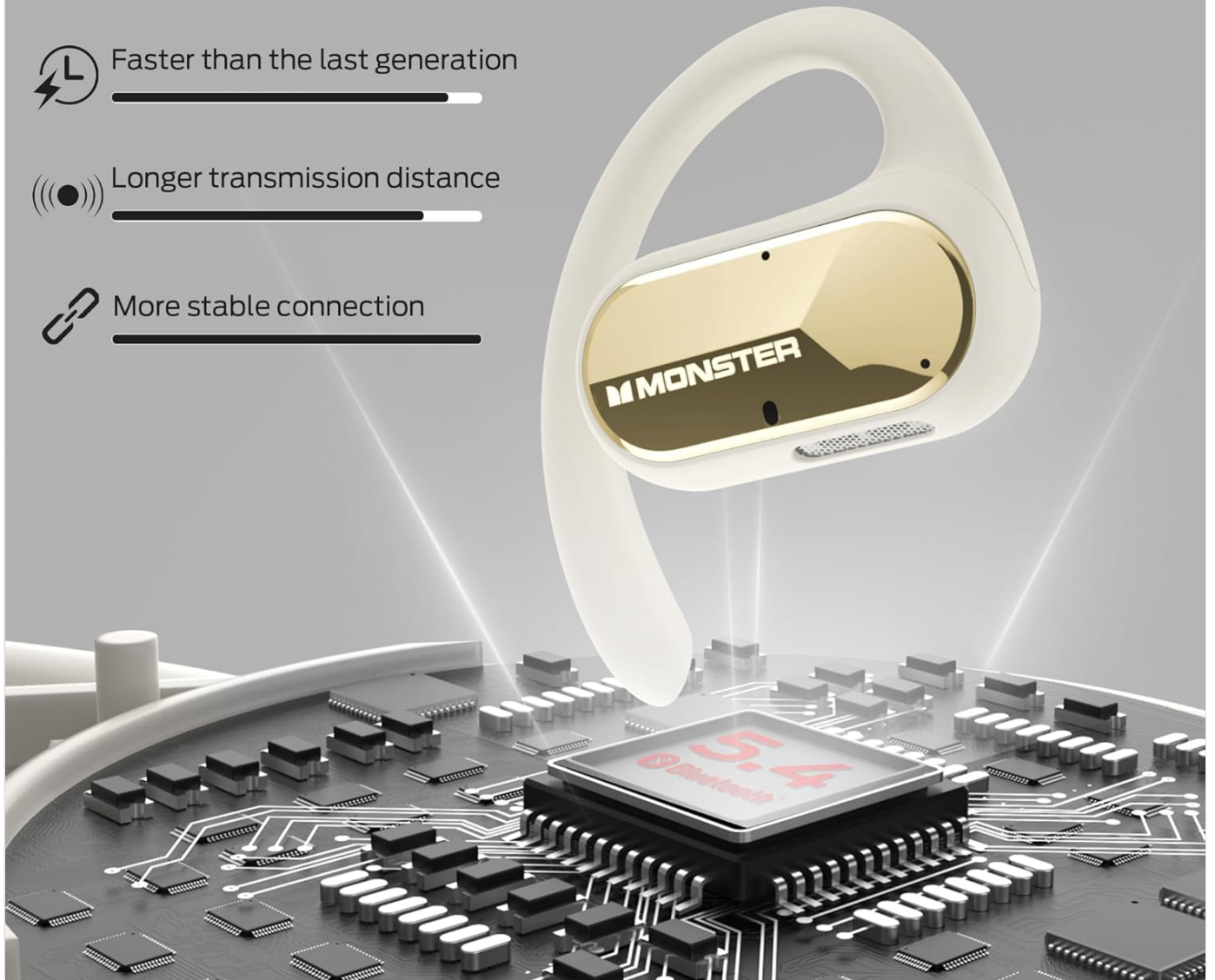
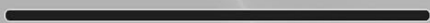


Image: A visual representation of the upgraded Bluetooth 5.4 technology, highlighting its benefits: faster speed compared to previous generations, longer transmission distance, and a more stable connection for the Monster Open Ear AC312 Headphones.







Warranty and Support

For warranty information, technical support, or service inquiries regarding your Monster Open Ear AC312 Headphones, please refer to the official Monster website or contact their customer support directly. Details on warranty coverage and how to obtain service are typically provided with your purchase documentation or on the manufacturer's official support pages.

You can often find support resources, FAQs, and contact information by visiting the official Monster website:

www.monsterproducts.com

Related Documents - E35

	<p>Monster Open Ear AC225 Bluetooth Headphones Quick Start Guide</p> <p>A concise guide to setting up and using your Monster Open Ear AC225 Bluetooth Headphones, covering charging, pairing, wearing, and basic operations.</p>
	<p>Monster Aria Free Quick Start Guide - Wireless Open Ear Headphones</p> <p>Get started quickly with the Monster Aria Free open-ear wireless headphones. This guide covers charging, pairing, controls, and wearing instructions for model MH22134.</p>
	<p>Monster MH22241 Bluetooth Headphones Quick Start Guide</p> <p>Quick start guide for Monster MH22241 Bluetooth Headphones, covering setup, pairing, operation, and indicator lights. Learn how to use your Monster Open Ear AC390 earbuds.</p>
	<p>Monster Open Ear AC210 Bluetooth Headphones Quick Start Guide</p> <p>User guide for Monster Open Ear AC210 Bluetooth headphones, covering setup, pairing, controls, and troubleshooting. Features include touch controls, voice assistant, and single-earphone mode.</p>
	<p>Monster Open Ear AC600 Bluetooth Headphones Quick Start Guide</p> <p>A concise guide to setting up and using your Monster Open Ear AC600 Bluetooth headphones, including pairing, controls, and charging.</p>
	<p>Monster Open Ear 200 Quick Start Guide</p> <p>A concise guide to setting up and using the Monster Open Ear 200 headphones, including power, charging, pairing, music controls, and voice commands.</p>