

SUPERONE 1

SUPERONE 2025 Upgraded Dual-Side Magnetic Ring Holder Instruction Manual

Model: 1

INTRODUCTION

Thank you for choosing the SUPERONE 2025 Upgraded Dual-Side Magnetic Ring Holder. This manual provides detailed instructions for the proper setup, operation, and maintenance of your new accessory. Please read this manual thoroughly before use to ensure optimal performance and longevity of the product.

PACKAGE CONTENTS

- Magnetic Ring Holder x 1

COMPATIBILITY

This magnetic ring holder is designed for use with:

- iPhone 16, 16 Pro, 16 Pro Max, 16 Plus series
- iPhone 15, 15 Pro, 15 Pro Max, 15 Plus series
- iPhone 14, 14 Pro, 14 Pro Max, 14 Plus series
- iPhone 13, 13 mini, 13 Pro, 13 Pro Max series
- iPhone 12, 12 Pro, 12 Pro Max series
- MagSafe compatible cases for the above iPhone models.

Note: This product is not compatible with other iPhone models or non-MagSafe cases. Metal attachments on your phone or case may interfere with magnetic functionality.

ONLY Compatible
iPhone 16/15/14/13/12
and **MagSafe Case**

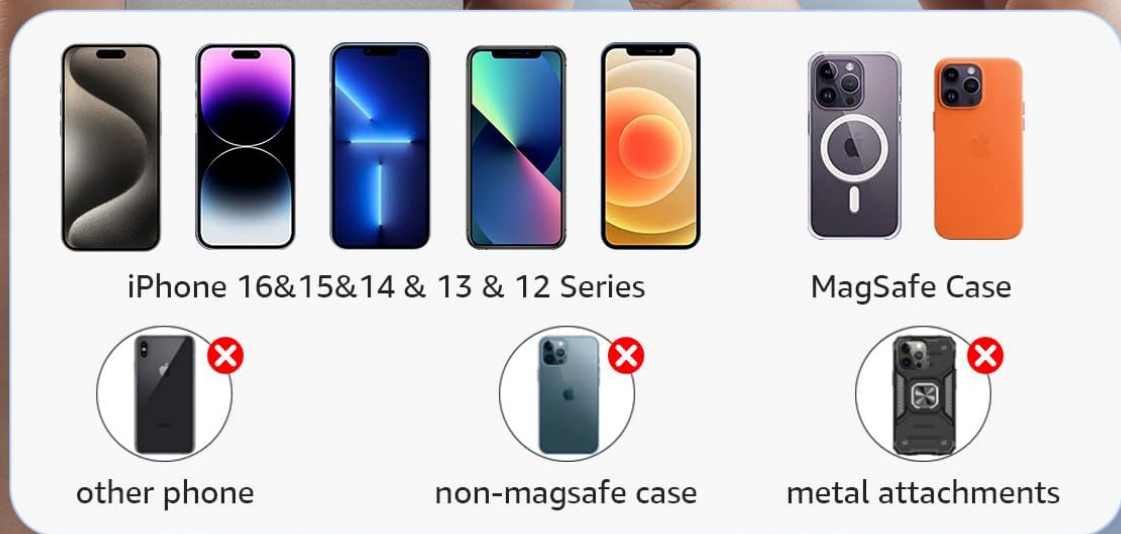


Image: Compatibility with iPhone 12-16 series and MagSafe cases.

SETUP

To attach the magnetic ring holder to your device:

1. Ensure your iPhone is a compatible model (iPhone 12 series or newer) or is housed in a MagSafe compatible case.
2. Align the magnetic ring holder with the MagSafe area on the back of your iPhone or MagSafe case. The magnets will automatically snap into place, securing the holder.
3. Verify that the holder is firmly attached before use.



Image: Attaching the magnetic ring holder to an iPhone.

OPERATING INSTRUCTIONS

1. Using as a Grip

Once attached, insert your finger through the ring to secure your grip on the phone. This helps prevent accidental drops and provides a more comfortable hold, especially for larger devices.

Hands-Free, Hassle-Free Versatile for All Occasions



Image: Using the ring holder as a finger grip.

2. Using as a Kickstand

The ring holder features a flexible pivot allowing for multi-angle adjustments. Rotate the ring 360° and flip it up to 145° to position your phone horizontally or vertically for hands-free viewing. This is ideal for watching videos, making video calls, or browsing content.

Flexible 360° Rotation & 145° Flip

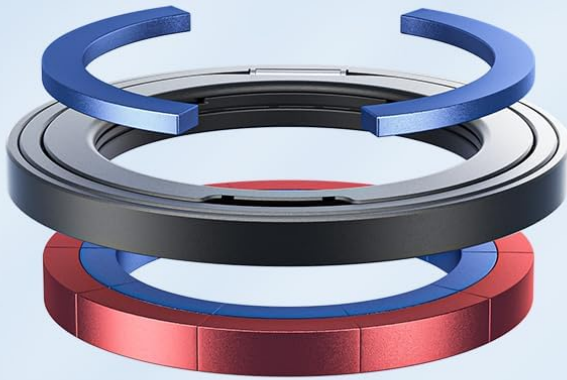
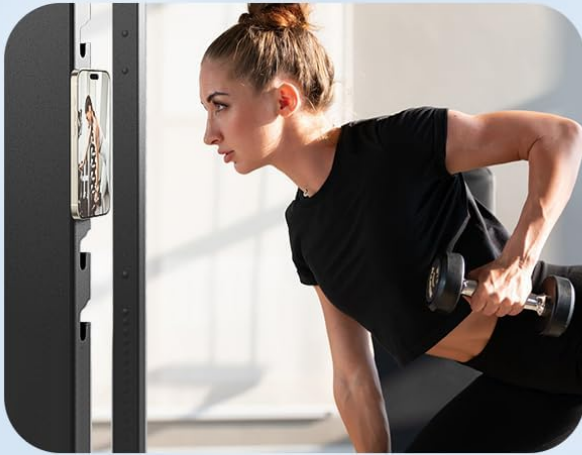
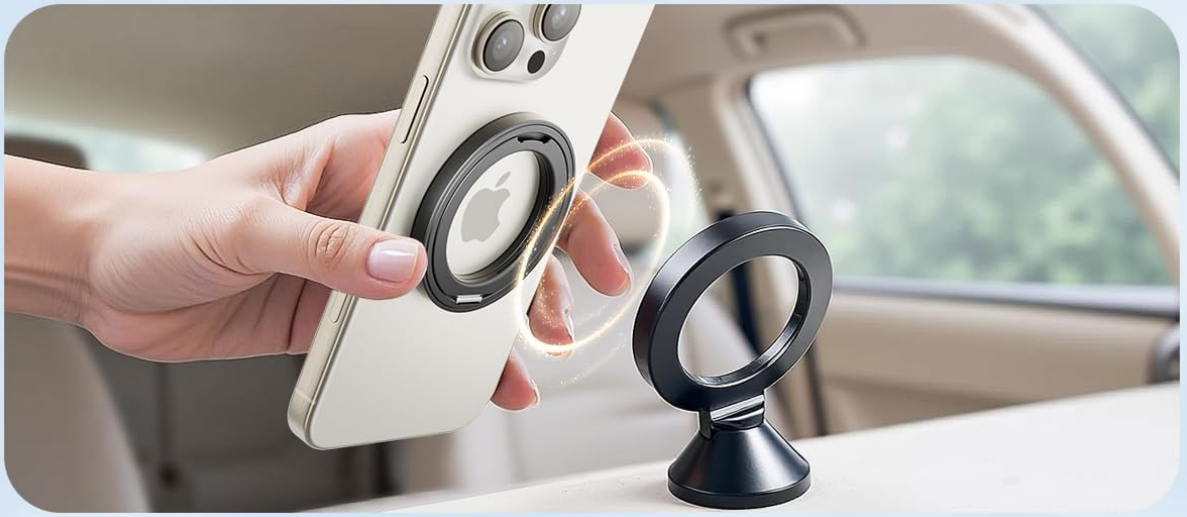


Image: Demonstrating 360° rotation and 145° flip for kickstand use.

3. Dual-Sided Magnetic Functionality

The unique dual-sided magnetic design allows the holder to attach to various magnetic metal surfaces without needing to remove it from your phone. This includes:

- **MagSafe Car Mounts:** Easily attach your phone to a compatible MagSafe car mount for navigation or hands-free communication.
- **Other Metal Surfaces:** Securely attach your phone to gym equipment, refrigerators, or other magnetic metal surfaces for convenient viewing during activities.



NO.1

Double-Sided Magnetic

Easily attach your phone to any metal surface

Image: Dual-sided magnetic attachment to car mounts and other metal surfaces.

Magnetic Max & Protection Max

Never Worry about it Falling or Dropping



Image: Illustration of the strong magnetic force.

4. Decompression Feature

The external 360° rotating ring can also be used as a tactile element for stress relief, providing a simple and enjoyable way to manage tension.

MAINTENANCE AND CARE

- To clean the ring holder, gently wipe it with a soft, dry cloth. Avoid using abrasive cleaners or solvents.
- Do not expose the product to extreme temperatures or direct sunlight for prolonged periods.
- Avoid dropping the product or subjecting it to strong impacts, as this may damage the hinge

mechanism or magnetic components.

TROUBLESHOOTING

- Issue: Ring holder does not attach securely.**
Solution: Ensure your phone is an iPhone 12 series or newer, or that you are using a MagSafe compatible case. Non-MagSafe cases or metal attachments on your phone/case will prevent a secure magnetic connection.
- Issue: Kickstand feels loose or unstable.**
Solution: The metal hinges are designed for durability (50,000+ folds). If the stand feels unusually loose, inspect for any visible damage. Contact customer support if the issue persists.
- Issue: Difficulty rotating or flipping the ring.**
Solution: Ensure there is no debris obstructing the hinge mechanism. Apply gentle, even pressure when rotating or flipping. Do not force the movement.

PRODUCT SPECIFICATIONS

Item Model Number	1
Package Dimensions	2.52 x 2.52 x 0.55 inches
Item Weight	0.317 ounces
Magnetic Strength	Up to 5.5 lbs (2.5 kg)
Rotation	360°
Flip Angle	Up to 145°
Hinge Durability	Tested for 50,000+ folds
Material	Zinc Alloy & Aluminum Alloy
Color	Black



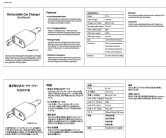
WARRANTY AND SUPPORT

SUPERONE provides a hassle-free 18-month warranty for this product, along with lifetime technical support.

For any inquiries or concerns, please do not hesitate to contact the SUPERONE customer service team. We are available 24/7 to assist our valued customers.

Contact Information: Please refer to the contact details provided on the product packaging or the official SUPERONE website.

Related Documents

	<p>SUPERONE Magnetic Car Mount Charger User Guide</p> <p>Comprehensive guide for the SUPERONE Magnetic Car Mount Charger, detailing features, installation, operation, and troubleshooting for iPhone 12/13/14/15/16 and compatible devices.</p>
	<p>SUPERONE 36W 6A Fast USB Car Charger User Manual</p> <p>Comprehensive user manual for the SUPERONE 36W 6A Fast USB Car Charger. Details features like pure copper body, dual PD/QC 3.0 ports, and safety protections. Includes technical specifications, usage notes, and warranty information.</p>
	<p>SUPERONE Retractable Car Charger User Manual - Fast Charging, 4-in-1 Solution</p> <p>Comprehensive user manual for the SUPERONE Retractable Car Charger (Model PT-16). Learn about its features including fully retractable cables, 4-in-1 charging capabilities, voltage display, and all-round protections. Includes detailed specifications and warranty information.</p>