



Manuals.plus /

› [Xininyia](#) /

› [Xininyia P68 P68M Smart Watch Magnetic Charging Cable User Manual](#)

Xininyia P68 P68M

Xininyia P68 P68M Smart Watch Magnetic Charging Cable User Manual

1. INTRODUCTION

This manual provides essential information for the safe and efficient use of your Xininyia P68 P68M Smart Watch Magnetic Charging Cable. Please read these instructions carefully before use and retain them for future reference.

2. PRODUCT OVERVIEW

The Xininyia P68 P68M Magnetic Charging Cable is designed for specific smart watch models, offering a reliable and secure charging solution. It features a magnetic connection for ease of use and incorporates safety mechanisms to protect your device during charging.



Figure 2.1: The Xininyia P68 P68M Smart Watch Magnetic Charging Cable, featuring a USB-A connector on one end and a magnetic charging head on the other.

Key Features:

- **Efficient Fast Charging:** Optimized circuit design ensures stable current and voltage output for quick charging.
- **Strong Magnetic Design:** Built-in pure copper probe with powerful magnetic adsorption for a secure connection.
- **Short-Circuit Protection:** Multiple protection mechanisms prevent overheating and damage to the battery.
- **Durable Construction:** Made from ABS material and flexible PVC, tested for over 5000 bends.
- **Portable Design:** Lightweight and compact for easy travel.
- **Eco-Friendly:** High-efficiency conversion circuit and low power standby mode reduce energy consumption.

Detail Display

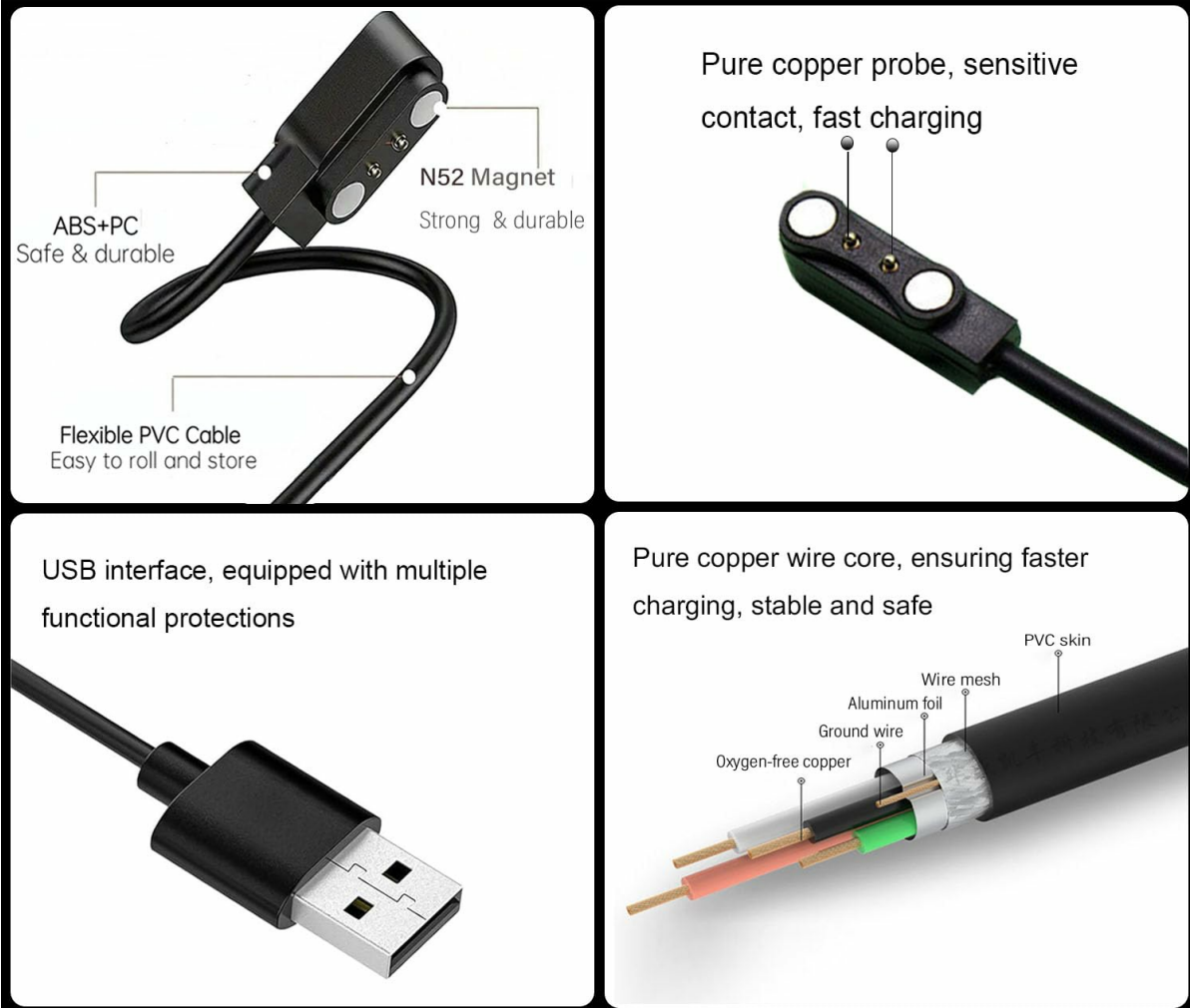


Figure 2.2: Detailed display of the charger's internal components, including the pure copper probe for sensitive contact and fast charging, the ABS+PC casing for durability, flexible PVC cable, and the USB interface with multiple functional protections. The internal structure of the pure copper wire is also shown, highlighting oxygen-free copper for stable and safe charging.

Your browser does not support the video tag.

Video 2.1: An official product video demonstrating the features of the Xininyia Magnetic Charging Cable, including its fast charging capabilities, strong magnetic connection, and durable design. This video provides a visual overview of the product's functionality and build quality.

3. SETUP

Setting up your Xininyia P68 P68M Magnetic Charging Cable is straightforward:

1. Connect the USB-A end of the charging cable to a compatible USB power source (e.g., a wall adapter, computer USB port, or power bank). Ensure the power source provides a stable 5V output.
2. Align the magnetic charging head with the charging contacts on your P68 or P68M smart watch. The magnets will automatically snap the charger into place, ensuring proper contact.

4. OPERATING INSTRUCTIONS

Once the charger is connected to a power source and your smart watch, the charging process will begin automatically. Most smart watches display a charging indicator on their screen. Refer to your smart watch's manual for specific charging status indications.



Figure 4.1: Illustration of a smart watch being charged using the magnetic charging cable. The image highlights the secure magnetic connection and the short-circuit protection feature, ensuring safe power delivery to the device.

The cable's built-in short-circuit protection IC helps prevent damage from excessive current, ensuring a safe charging environment for your device.

5. MAINTENANCE

To ensure the longevity and optimal performance of your charging cable:

- Keep the magnetic charging contacts clean and free from dust or debris. Use a soft, dry cloth to wipe them if necessary.
- Avoid bending the cable sharply or subjecting it to excessive force, which can damage the internal wires.
- Store the cable in a cool, dry place when not in use.
- Do not expose the cable to extreme temperatures or moisture.

6. TROUBLESHOOTING

If you encounter issues with your charging cable, consider the following:

- **Watch not charging:** Ensure the USB-A connector is fully inserted into a working power source. Verify that the magnetic charging head is securely attached to your smart watch and that the contacts are clean.
- **Slow charging:** Check if the power source provides sufficient output (e.g., a standard 5V USB port). Using a low-power USB port may result in slower charging.
- **Intermittent connection:** Clean the charging contacts on both the cable and the smart watch. Ensure there are no obstructions preventing a solid magnetic connection.

7. SPECIFICATIONS

Below are the technical specifications for the Xininyia P68 P68M Smart Watch Magnetic Charging Cable:

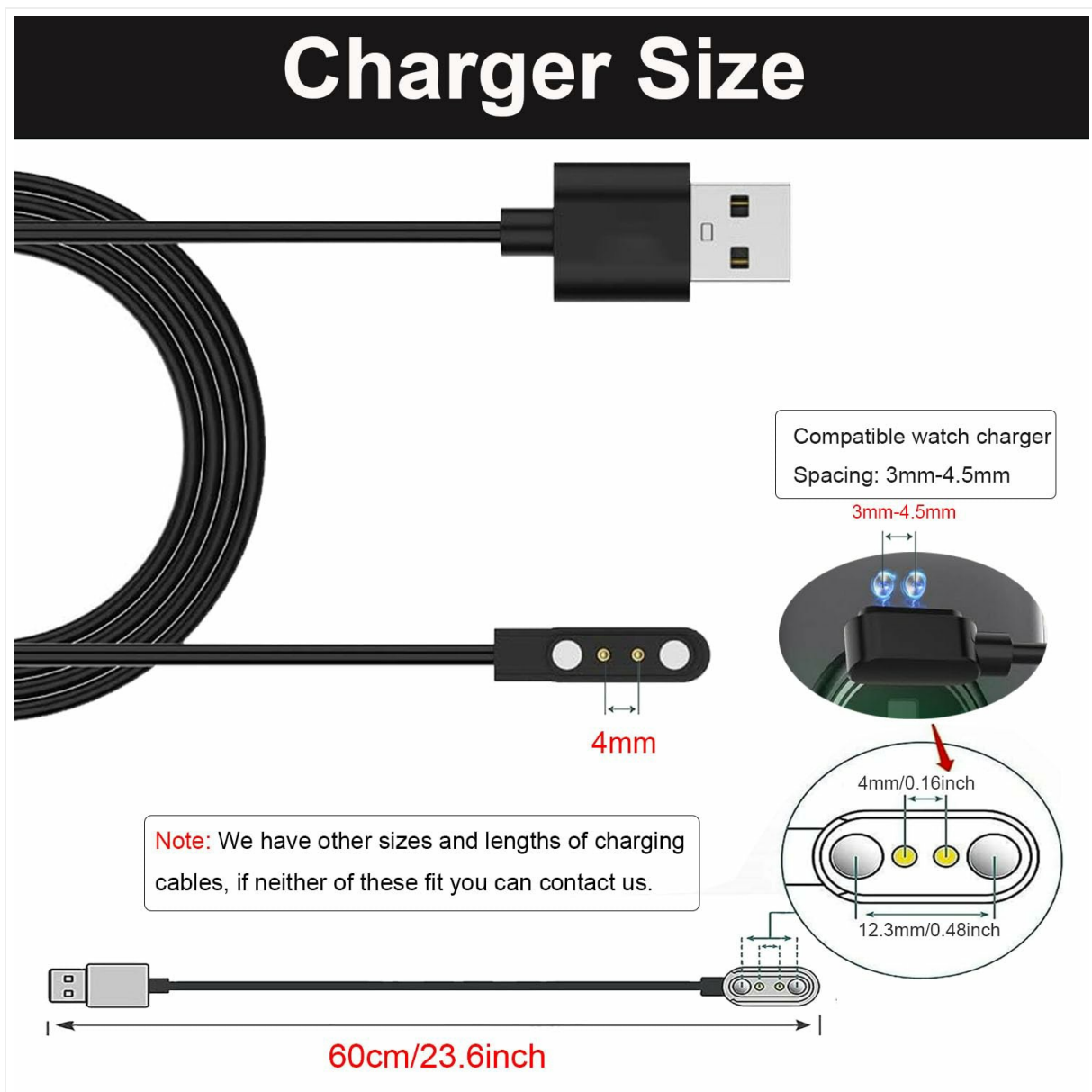


Figure 7.1: Detailed dimensions of the charger, showing a cable length of 60cm (23.6 inches) and a magnetic contact spacing of 3mm-4.5mm, with a 4mm pin spacing and 12.3mm (0.48 inch) overall width for the magnetic head.

Specification	Detail
Brand	Xininyia
Model Number	P68 P68M
Cable Length	60 cm (23.6 inches)
Connector Type	USB Type A
Compatible Devices	Smart Watch (P68, P68M models)
Special Feature	Shock-resistant, Short-circuit protection
Material	ABS, Flexible PVC
Color	Black
Certification	CE, RoHS
Item Weight	0.352 ounces

8. WARRANTY AND SUPPORT

For information regarding warranty coverage or technical support, please refer to the product's purchase documentation or contact the retailer where the product was acquired. Keep your proof of purchase for any warranty claims.