

[Manuals.plus](#) /

› [LOVENSE](#) /

› LOVENSE Gush 2 and Kraken Product Instruction Manual

LOVENSE Gush 2 and Kraken Male Masturbator Egg

LOVENSE Gush 2 and Kraken Product Instruction Manual

Model: Gush 2 and Kraken Male Masturbator Egg

1. INTRODUCTION

This manual provides comprehensive instructions for the safe and effective use, maintenance, and troubleshooting of your LOVENSE Gush 2 and LOVENSE Kraken Male Masturbator Egg bundle. Please read this manual thoroughly before first use to ensure optimal performance and longevity of your products.



Figure 1.1: The LOVENSE Gush 2 (left) and LOVENSE Kraken Male Masturbator Egg (right) included in this bundle.

2. SAFETY INFORMATION

Always prioritize your safety. Adhere to the following guidelines:

- **For Adult Use Only:** These products are intended for adult use only. Keep out of reach of children.
- **Hygiene:** Clean the products thoroughly before and after each use as per the Maintenance section.
- **Lubrication:** Always use a water-based lubricant with these products. Oil-based lubricants can damage the silicone material.
- **Discontinue Use:** If you experience any discomfort, irritation, or pain during use, discontinue immediately and consult a healthcare professional.
- **Storage:** Store products in a clean, dry, and cool place, away from direct sunlight and extreme temperatures.
- **Charging (Gush 2):** Use only the provided charging cable. Do not use the device while charging. Avoid overcharging.

3. PRODUCT OVERVIEW

3.1 LOVENSE Gush 2

The LOVENSE Gush 2 is an automatic male vibrator and oscillation device designed for enhanced stimulation and endurance training. It features a flexible silicone design and powerful motors for both vibration and oscillation. The

oscillation pad is specifically designed to align with the penis frenulum for focused stimulation. It can be controlled via a dedicated app for customized experiences.

Comfortable for All Sizes

Soft, flexible band offers a wider range of fit

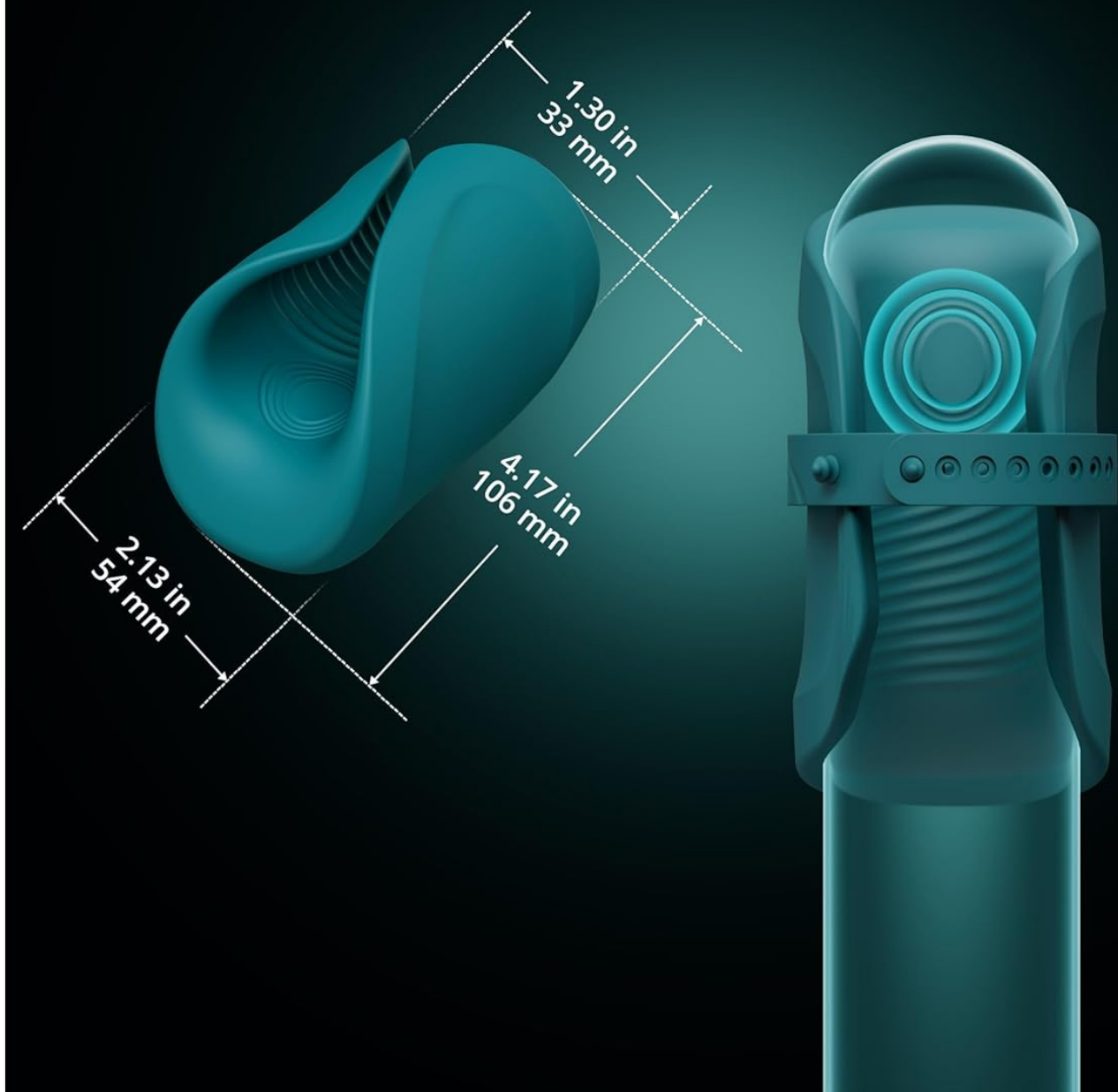


Figure 3.1: The LOVENSE Gush 2, highlighting its hands-free design and powerful vibrations.

3.2 LOVENSE Kraken Male Masturbator Egg

The LOVENSE Kraken Male Masturbator Egg is a disposable, portable masturbator made from super soft TPE material. Its highly textured internal tunnel provides a unique sensation. The egg design allows for discreet and easy transport.

Discreet and easy to transport



Figure 3.2: The LOVENSE Kraken Male Masturbator Egg, showcasing its super soft TPE material.

4. SETUP

4.1 LOVENSE Gush 2 Initial Setup

1. **Charge the Device:** Before first use, fully charge your Gush 2 using the provided USB charging cable. Connect the cable to the charging port on the device and a compatible USB power source. The indicator light will show charging

status.

2. **Download the App:** For full functionality, download the LOVENSE app from your device's app store.
3. **Pair with App:** Follow the in-app instructions to pair your Gush 2 via Bluetooth. Ensure Bluetooth is enabled on your smartphone.

4.2 LOVENSE Kraken Male Masturbator Egg Preparation

1. **Unpack:** Carefully remove the Kraken egg from its packaging.
2. **Inspect:** Before use, inspect the product for any damage. Do not use if damaged.

5. OPERATING INSTRUCTIONS

5.1 Using the LOVENSE Gush 2

1. **Apply Lubricant:** Apply a generous amount of water-based lubricant to the inside of the Gush 2 and to yourself.
2. **Positioning:** Gently slide the Gush 2 onto the penis, ensuring a comfortable fit. The oscillation pad should align with the frenulum for targeted stimulation.
3. **Power On:** Press and hold the power button on the device to turn it on.
4. **Control:** Use the physical buttons on the device to cycle through vibration and oscillation modes, or use the LOVENSE app for advanced control, custom patterns, and remote play.
5. **Power Off:** Press and hold the power button to turn off the device after use.

Hands-free Penis Massager

Hands-free, easy-wear with powerful vibrations for ultimate climax

4300 /min

Oscillations+Vibrations

Figure 5.1: The LOVENSE Gush 2 in operation, illustrating its oscillation and vibration capabilities.

5.2 Using the LOVENSE Kraken Male Masturbator Egg

1. **Open:** Carefully open the Kraken egg by separating the two halves.
2. **Apply Lubricant:** Apply a generous amount of water-based lubricant to the inside of the Kraken egg and to yourself.
3. **Insert:** Gently insert the penis into the textured opening of the Kraken egg.
4. **Use:** Enjoy the unique sensations provided by the internal textures.

5. **Dispose:** The Kraken egg is designed for single or limited use. Dispose of responsibly after use.

Super soft material



Figure 5.2: Step-by-step diagram for using the LOVENSE Kraken Male Masturbator Egg.

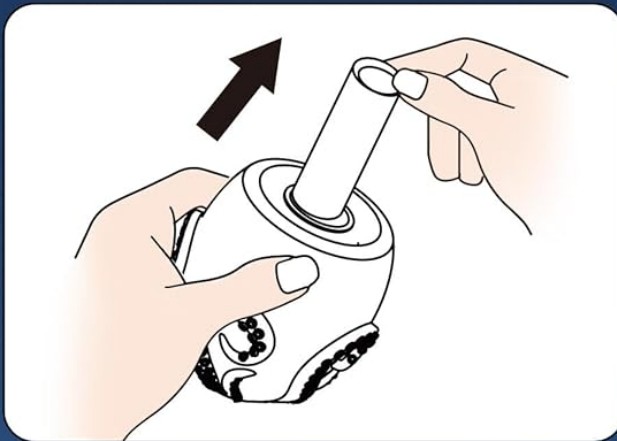
6. MAINTENANCE AND CLEANING

6.1 LOVENSE Gush 2 Cleaning

The Gush 2 is fully waterproof. Clean it thoroughly before and after each use:

1. **Rinse:** Rinse the device under warm running water.
2. **Cleanse:** Use a mild soap or a specialized toy cleaner to gently clean the silicone surface.
3. **Rinse Again:** Rinse thoroughly to remove all soap residue.
4. **Dry:** Pat dry with a lint-free cloth or allow to air dry completely before storing.

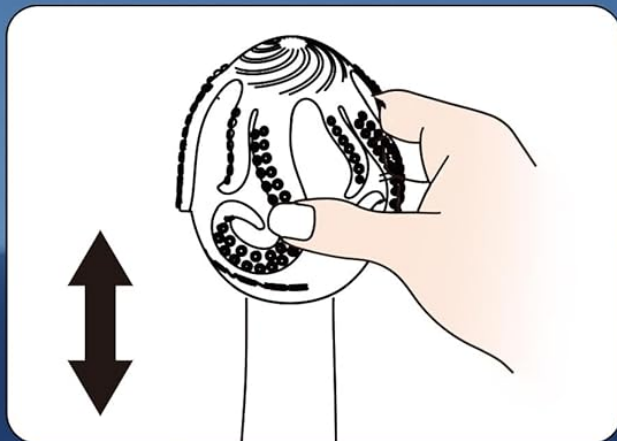
How to use



1 Open



2 Apply lube



3 Play

Figure 6.1: The LOVENSE Gush 2 is fully waterproof and easy to clean under running water.

6.2 LOVENSE Kraken Male Masturbator Egg Cleaning

While the Kraken egg is often considered disposable, it can be rinsed for limited re-use if desired:

1. **Rinse:** Rinse the inside and outside of the egg with warm water.
2. **Cleanse:** Use a mild soap or toy cleaner if desired.
3. **Dry:** Allow to air dry completely.

6.3 Storage

Store both products separately in a clean, dry, and cool place, away from direct sunlight, extreme temperatures, and other toys made of different materials to prevent material degradation.

7. TROUBLESHOOTING

- **Gush 2 Not Turning On:** Ensure the device is fully charged. If the issue persists, try a different USB port or charging cable.
- **Gush 2 Not Vibrating/Oscillating:** Check battery level. If connected to the app, ensure a pattern is selected and activated.
- **Gush 2 Not Connecting to App:** Ensure Bluetooth is enabled on your phone and the device is charged. Try restarting both the device and the app. If issues persist, try unpairing and re-pairing the device in the app settings.
- **Kraken Egg Tears/Damages:** Discontinue use immediately and dispose of the product.
- **Discomfort During Use:** Ensure sufficient water-based lubricant is used. If discomfort persists, discontinue use.

8. SPECIFICATIONS

8.1 LOVENSE Gush 2

- **Material:** Flexible Silicone
- **Dimensions:** Approximately 4.17 in (106 mm) length, 2.13 in (54 mm) width, 1.30 in (33 mm) height (refer to Figure 8.1)
- **Water Resistance:** Fully Waterproof
- **Control:** On-device buttons, LOVENSE App (Bluetooth)

Longer Sex Pleasure with Gush 2

Ideal for edging and stamina training



Figure 8.1: Dimensions of the LOVENSE Gush 2.

8.2 LOVENSE Kraken Male Masturbator Egg

- **Material:** Super Soft TPE
- **Dimensions:** Approximately 2.44 in (62 mm) height, 2.05 in (52 mm) width (refer to Figure 8.2)
- **Type:** Disposable Pocket Pussy Masturbator Sleeve

Product Size

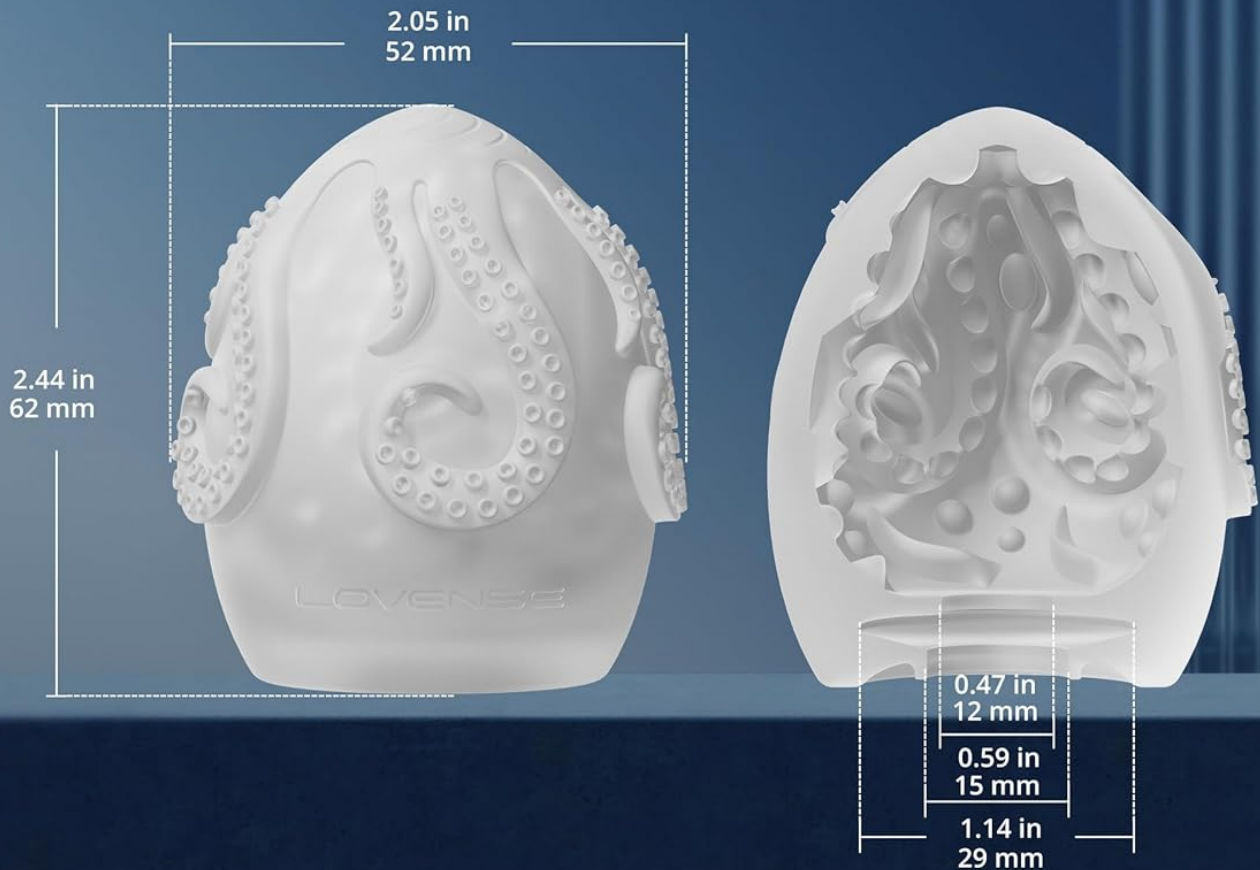


Figure 8.2: Dimensions of the LOVENSE Kraken Male Masturbator Egg.

9. WARRANTY AND SUPPORT

LOVENSE products are designed for quality and durability. For information regarding product warranty, returns, or technical support, please refer to the official LOVENSE website or contact their customer service directly. Keep your proof of purchase for warranty claims.

Online Support: Visit the official LOVENSE website for FAQs, support articles, and contact information.

Contact: Refer to the packaging or official website for specific customer service contact details.

© 2025 LOVENSE. All rights reserved.