

Alaga 1303A

Alaga 2K Indoor Security Camera Model 1303A User Manual

Your comprehensive guide to setup, operation, and maintenance.

1. INTRODUCTION

This manual provides detailed instructions for the Alaga 2K Indoor Security Camera, Model 1303A. This device is designed to offer reliable indoor surveillance with features such as 2K resolution, AI motion detection, two-way audio, and night vision. It is compatible with popular smart home platforms like Amazon Alexa and Google Assistant. Please read this manual thoroughly before operating the camera to ensure proper setup and functionality.

2. PRODUCT OVERVIEW

2.1 Package Contents

Before proceeding with installation, please verify that all items listed below are present in your package:

- Alaga Camera *1
- DC Power Adapter (US Plug) *1
- Power Cable *1
- Mounting Screw *2
- Quick Start Guide *1
- Drill Template *1
- 64GB Micro SD Card *1

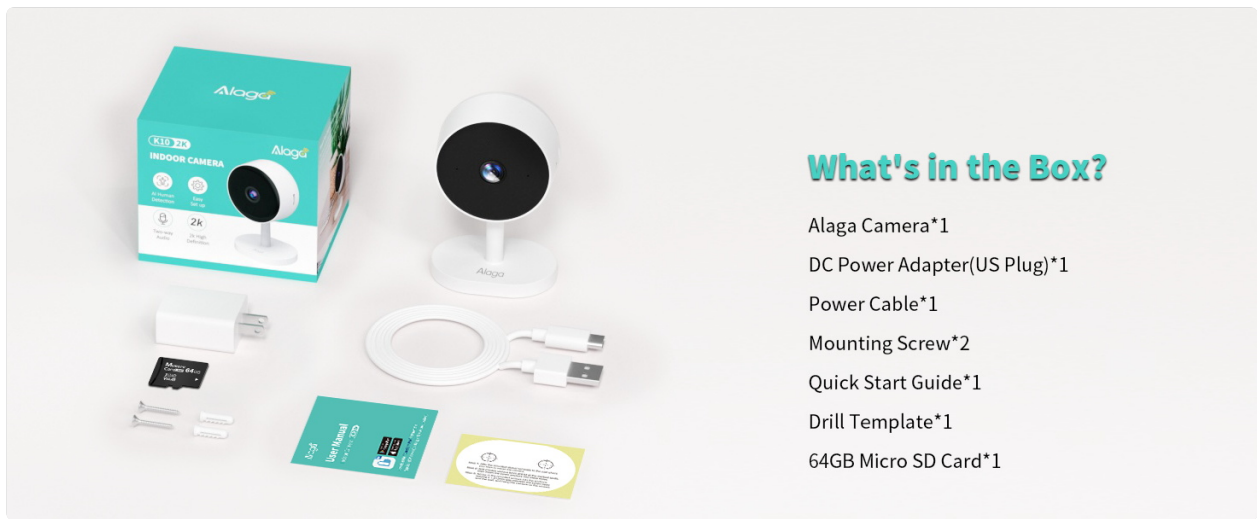


Image: All components included in the Alaga 2K Indoor Security Camera package.

2.2 Key Features and Dimensions

The Alaga 2K Indoor Security Camera offers a range of features for comprehensive home monitoring. Its compact design allows for versatile placement.

- **2K Resolution:** Provides clear and detailed video footage.
- **Dual-Band Wi-Fi:** Supports both 2.4GHz and 5GHz networks for stable connectivity.
- **AI Motion Detection:** Intelligently detects movement and sends alerts.
- **Two-Way Audio:** Allows for real-time communication through the camera.
- **Enhanced Night Vision:** Clear visibility in low-light conditions up to 30 feet.
- **Flexible Storage:** Supports local storage via Micro SD card (up to 256GB) and cloud storage options.
- **Smart Home Compatibility:** Works with Amazon Alexa and Google Assistant.

Alaga Dual Band WiFi Camera



Image: Physical dimensions and a summary of the camera's main features.

3. SETUP GUIDE

3.1 Power Connection

Connect the provided power cable to the camera's USB Type-C port and plug the DC power adapter into a standard electrical outlet. The camera will power on automatically.

3.2 App Download and Installation

To control and monitor your camera, download the "CareCam Pro" app from your smartphone's app store (iOS or Android). Follow the on-screen instructions to create an account and log in.

Quick Installation Guide

*For more detailed steps, please refer to the package

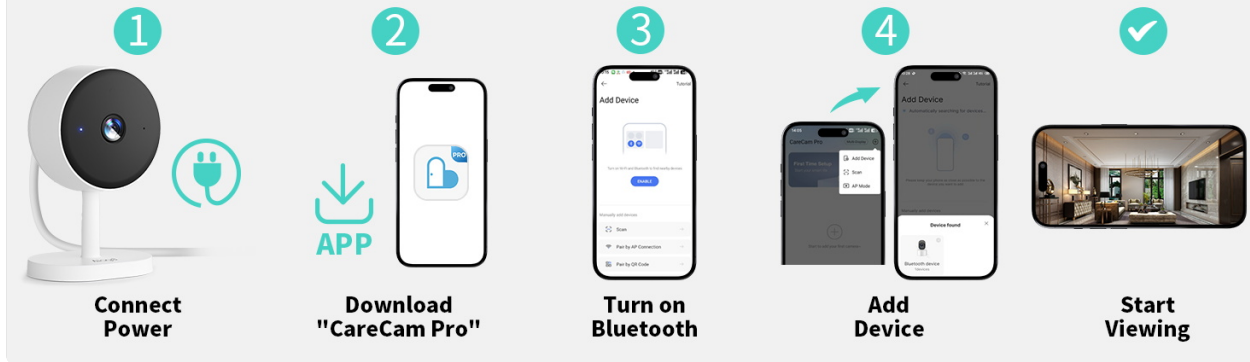


Image: Visual steps for quick installation, including app download and device pairing.

3.3 Device Pairing

After logging into the CareCam Pro app, enable Bluetooth on your smartphone. The app will guide you through the process of adding your new camera. Ensure your Wi-Fi network is available (supports both 2.4GHz and 5GHz bands) and enter the correct password when prompted.



Image: The camera supports both 2.4GHz and 5GHz Wi-Fi, along with Bluetooth for initial pairing.

3.4 Micro SD Card Installation

The camera comes with a 64GB Micro SD card for local storage. To install, locate the Micro SD card slot on the camera (typically on the side or back). Gently insert the card until it clicks into place. Ensure the camera is powered off before inserting or removing the card.



Image: Demonstrates the insertion of a Micro SD card into the camera for local storage.

3.5 Mounting the Camera

The Alaga camera can be placed on a flat surface or mounted on a wall or ceiling. Use the provided mounting screws and drill template for secure installation. Ensure the camera is positioned to cover the desired monitoring area.

- **Tabletop Placement:** Simply place the camera on a stable, flat surface.
- **Wall/Ceiling Mount:** Use the drill template to mark screw positions. Drill holes, insert anchors if necessary, and secure the mounting bracket. Attach the camera to the bracket.



Versatile Installation

**Easy to install
Even on ceilings**



Image: Examples of versatile camera installation, including wall and ceiling mounting.

4. OPERATING INSTRUCTIONS

4.1 Live View and Recording

Open the CareCam Pro app and select your camera from the device list to access the live video feed. From the live view interface, you can initiate manual recordings, take screenshots, and adjust video quality settings.



Image: A smartphone displaying the live video feed from the Alaga camera.

4.2 Two-Way Audio Communication

The camera features a built-in microphone and speaker, enabling two-way audio. In the live view, tap the microphone icon to speak through the camera, and listen to audio from the camera's environment.

Convenient Two-Way Audio

Listen and speak as if you were in a face-to-face conversation

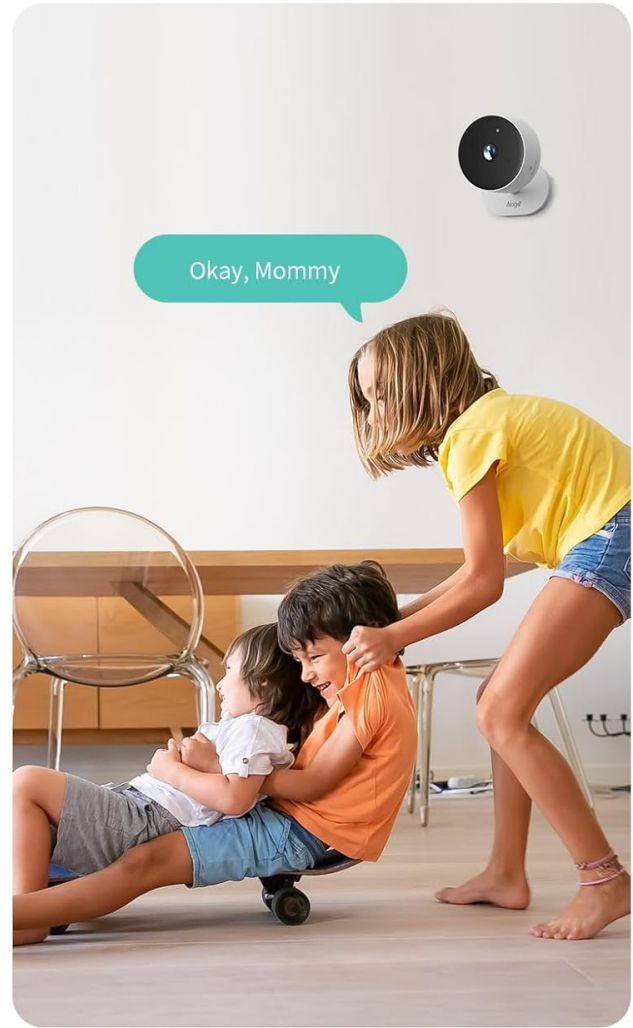


Image: Demonstrates the two-way audio feature, allowing communication through the camera.

4.3 Motion Detection and Alerts

The camera's AI motion detection system can identify movement and send instant push notifications to your smartphone. You can adjust the detection sensitivity and set specific monitoring zones within the app. An integrated siren can be activated to deter unwanted activity.



Image: Illustrates motion detection triggering an alert on a smartphone and the camera's siren feature.

4.4 Night Vision

The camera automatically switches to night vision mode in low-light conditions, providing clear black-and-white footage up to 30 feet. This ensures continuous monitoring even in complete darkness.

Super Night Vision

The field of view reaches 33 feet without visible glare, enhancing night-time clarity



Image: A demonstration of the camera's night vision capability, showing clear footage in low light.

4.5 Viewing Angle Adjustment

The camera allows for manual 360-degree rotation. Gently adjust the camera head by hand to achieve the desired viewing angle and cover different areas of your room.

Manual 360° Rotation

Easily adjust the viewing angle by hand for full-room coverage



Image: Illustrates the camera's manual 360-degree rotation feature for comprehensive room coverage.

4.6 Storage Management

Recordings can be stored locally on the included 64GB Micro SD card or via optional cloud storage services. Manage your recordings and storage preferences through the CareCam Pro app.

4.7 Smart Home Integration

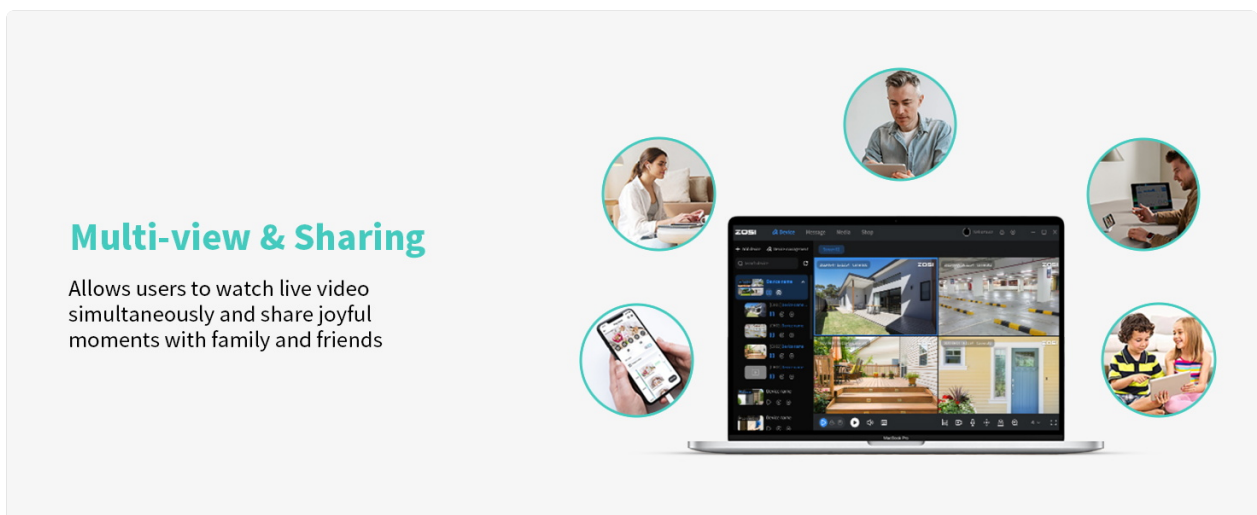
Integrate your Alaga camera with Amazon Alexa or Google Assistant for voice control and seamless smart home management. Follow the instructions in the CareCam Pro app to link your camera to your preferred smart assistant.



Image: The camera's compatibility with Amazon Alexa and Google Assistant for voice control and display.

4.8 Multi-User Sharing

The CareCam Pro app allows you to share access to your camera's live feed and recordings with family members or trusted individuals. This feature enables multiple users to monitor the same camera simultaneously.



Multi-view & Sharing

Allows users to watch live video simultaneously and share joyful moments with family and friends

Image: Demonstrates the multi-user sharing feature, allowing multiple people to view the camera feed.

5. MAINTENANCE

5.1 Cleaning

To maintain optimal performance, regularly clean the camera lens and body. Use a soft, dry cloth to wipe away dust and smudges. Avoid using harsh chemicals or abrasive materials that could damage the camera.

5.2 Firmware Updates

Periodically check the CareCam Pro app for available firmware updates. Keeping your camera's firmware up-to-date ensures access to the latest features, security enhancements, and performance improvements. Follow the in-app instructions for updating firmware.

6. TROUBLESHOOTING

If you encounter issues with your Alaga 2K Indoor Security Camera, refer to the following common problems and solutions:

Problem	Possible Solution
Camera fails to connect to Wi-Fi.	<ul style="list-style-type: none">• Ensure your Wi-Fi password is correct.• Verify the camera is within range of your router.• Confirm your router supports 2.4GHz or 5GHz bands and is configured correctly.• Restart the camera and your router.• Try resetting the camera to factory defaults (refer to app for specific steps).
No live video feed in the app.	<ul style="list-style-type: none">• Check your internet connection.• Ensure the camera is powered on and connected to Wi-Fi.• Close and reopen the CareCam Pro app.• Re-pair the camera if connectivity issues persist.
Motion detection alerts are not received.	<ul style="list-style-type: none">• Verify motion detection is enabled in the app settings.• Check app notification permissions on your smartphone.• Adjust motion sensitivity settings.
Two-way audio is unclear or has echo.	<ul style="list-style-type: none">• Ensure there is no obstruction near the camera's microphone or speaker.• Reduce background noise in the camera's environment.• Check your smartphone's microphone and speaker.

7. SPECIFICATIONS

Detailed technical specifications for the Alaga 2K Indoor Security Camera, Model 1303A:

Feature	Detail
Model Number	1303A
Indoor/Outdoor Usage	Indoor
Video Capture Resolution	2K (1920p)
Effective Video Resolution	2304 pixels
Connectivity Technology	Wired (Power), Wireless (Wi-Fi, Bluetooth)
Wireless Communication Technology	Bluetooth, Wi-Fi (2.4GHz, 5GHz)

Feature	Detail
Power Source	Corded Electric (5 watts)
Special Features	2-Way Audio, HD Resolution, Motion Sensor, Night Vision, Portable
Night Vision Range	30 Feet
Viewing Angle	100 Degrees
Storage	Micro SD (up to 256GB, 64GB included), Cloud Storage
Compatible Devices	Smartphone, Amazon Alexa, Google Assistant
Dimensions (L x W x H)	4.46 x 1.97 x 2.76 inches
Item Weight	7 ounces
Material	Acrylonitrile Butadiene Styrene (ABS), Plastic

8. WARRANTY AND SUPPORT

For warranty information or technical support, please refer to the official Alaga brand flagship store or contact their customer service directly. Keep your purchase receipt as proof of purchase for any warranty claims.

Online Support: Visit the [Alaga Brand Flagship Store on Amazon](#) for additional resources and contact information.