

Monster Open Ear AC520

Monster Open Ear AC520 Headphones User Manual

Model: Open Ear AC520

1. INTRODUCTION

Thank you for choosing the Monster Open Ear AC520 Headphones. These innovative open-ear earbuds are designed to provide a comfortable listening experience while keeping you aware of your surroundings. This manual will guide you through the setup, operation, and maintenance of your new headphones to ensure optimal performance and longevity.



Figure 1.1: Monster Open Ear AC520 Headphones and Charging Case

2. WHAT'S IN THE BOX

Please check the contents of your package to ensure all items are present:

- Monster Open Ear AC520 Headphones (x2)
- Portable Lanyard (x1)
- Charging Case (x1)
- Type-C Charging Cable (x1)
- User Manual (x1)

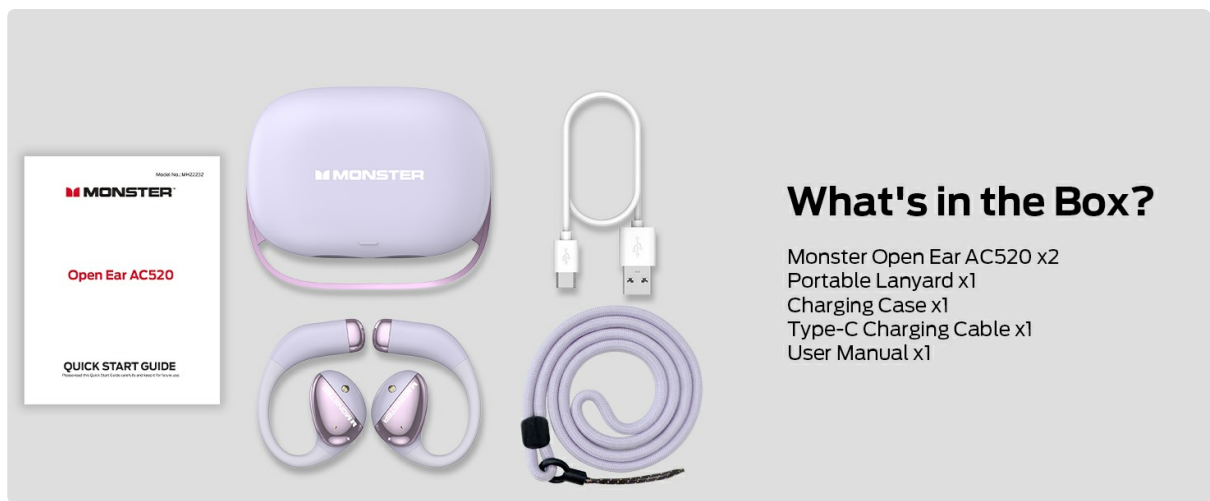


Figure 2.1: Package Contents

3. SETUP

3.1 Initial Charging

Before first use, fully charge the headphones and the charging case. Connect the Type-C charging cable to the charging case and a power source. The indicator lights on the case will show the charging status.

3.2 Bluetooth Pairing

1. Open the charging case. The earbuds will automatically enter pairing mode.
2. On your device (smartphone, tablet, etc.), enable Bluetooth.
3. Search for "Monster Open Ear AC520" in the list of available devices.
4. Select it to connect. Once connected, you will hear a confirmation tone.

The headphones will automatically reconnect to the last paired device when taken out of the case, if Bluetooth is enabled on the device.

4. HOW TO WEAR

The Monster Open Ear AC520 headphones are designed for a comfortable and secure fit. Follow these steps for proper wearing:

1. **Take out the earbuds from the case.**
2. **Place the earhooks behind your ears** for a secure fit.
3. **Lightly twist the earbuds** until you feel comfortable and secure.

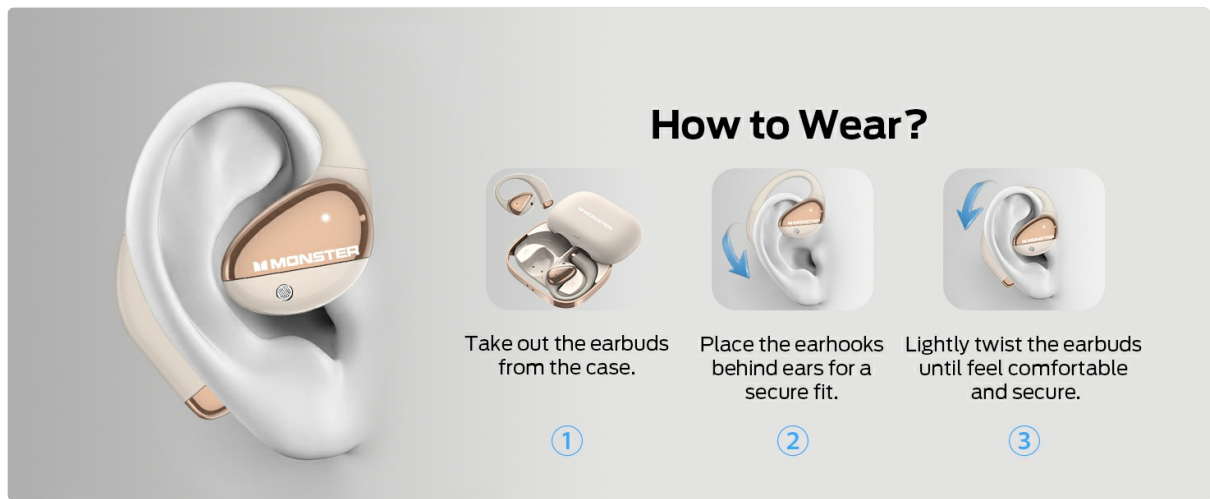


Figure 4.1: Proper Wearing Steps



Figure 4.2: Open-Ear Comfort Design

5. OPERATING INSTRUCTIONS (TOUCH CONTROLS)

The Monster Open Ear AC520 headphones feature intuitive touch controls on each earbud. Refer to the table below for common functions:

How to Control?



Click×2
Play/Pause
(L / R)



Hold×2s
Voice Assistant
(L / R)



Click×3
Previous
Song (L)



Click×3
Next
Song (R)



Click×2
Answer
(L / R)



Hold×2s
Hang Up
(L / R)



Click×1
Volume
Down (L)



Click×1
Volume
Up (R)



Figure 5.1: Touch Control Functions

Action	Function	Earbud (L/R)
Click × 2	Play/Pause	L/R
Hold × 2s	Voice Assistant	L/R
Click × 3	Previous Song	L
Click × 3	Next Song	R
Click × 2	Answer Call	L/R
Hold × 2s	Hang Up Call	L/R
Click × 1	Volume Down	L
Click × 1	Volume Up	R

6. CHARGING

The Monster Open Ear AC520 headphones offer extended playtime with their charging case.

- **Earbud Playtime:** Up to 8 hours on a single charge.
- **Total Playtime with Case:** Up to 24 hours.
- **Charging Time:** Approximately 1 hour for a full charge of the earbuds in the case.

To charge the case, connect it to a power source using the provided Type-C cable.

ENDURING POWER



Figure 6.1: Enduring Power - 24H Playtime

7. KEY FEATURES

7.1 Pure Monster Sound

Experience rich, dynamic audio with deep bass and crystal-clear highs, powered by advanced Monster HiFi sound technology and a 14.5mm speaker for dynamic audio.



Figure 7.1: Pure Monster Sound Technology

7.2 Unique Handbag Design

The sleek slide-open mechanism and removable lanyard offer both style and versatility, allowing you to wear them your way.



CHIC DESIGN WITH CHOICE

Featuring a removable lanyard for versatile music and style options.

Figure 7.2: Chic Design with Choice

7.3 IPX6 Water Resistance

Built to withstand sweat and rain, these earbuds are perfect for workouts or outdoor activities without worrying about water damage.



Figure 7.3: IPX6 Water Resistance

7.4 Advanced Bluetooth 6.0

Equipped with the latest Bluetooth 6.0 technology, these earbuds provide a fast, stable connection with lower latency and longer transmission range, ensuring audio and video are perfectly synchronized.

UPGRADED BLUETOOTH 6.0



Figure 7.4: Upgraded Bluetooth 6.0

7.5 Surround Awareness & Safety

The open-ear design allows you to enjoy your music while remaining aware of your surroundings, enhancing safety outdoors and facilitating interactions in the office.

7.6 Crystal Clear Calls

An AI noise reduction algorithm minimizes audio distractions, ensuring clear calls even in noisy environments.

CRYSTAL CLEAR CALLS

AI noise reduction algorithm minimizes audio distractions.



Figure 7.5: Crystal Clear Calls with AI Noise Reduction

8. MAINTENANCE

To ensure the longevity and optimal performance of your Monster Open Ear AC520 Headphones, follow these maintenance guidelines:

- **Cleaning:** Regularly wipe the earbuds and charging case with a soft, dry, lint-free cloth. Do not use abrasive cleaners or solvents.
- **Storage:** When not in use, store the headphones in their charging case to protect them from dust and damage. Store in a cool, dry place away from extreme temperatures.
- **Avoid Water Exposure:** While IPX6 water resistant, avoid submerging the headphones in water or exposing them to strong jets of water. Dry them thoroughly if they get wet.
- **Charging Port:** Keep the charging port free of dust and debris.

9. TROUBLESHOOTING

If you encounter any issues with your headphones, refer to the following common problems and solutions:

- **No Sound:**

- Ensure the headphones are charged.
- Check if the headphones are properly paired with your device.
- Adjust the volume on both the headphones and your device.
- Try restarting your device and reconnecting.

- **Pairing Issues:**

- Make sure Bluetooth is enabled on your device.
- Ensure the headphones are in pairing mode (indicator lights flashing).
- Forget the device from your phone's Bluetooth settings and try pairing again.
- Move closer to your device and away from other wireless interference.

- **Charging Case Not Charging:**

- Check the charging cable and power adapter.
- Ensure the charging port is clean and free of debris.
- Try a different charging cable or power source.

- **Earbuds Not Charging in Case:**

- Ensure the charging case has sufficient power.
- Clean the charging contacts on both the earbuds and inside the case with a dry cotton swab.
- Ensure the earbuds are correctly seated in the charging slots.

If the issue persists, please contact Monster customer support.

10. SPECIFICATIONS

Feature	Detail
Model Name	Monster Open Ear AC520 Headphones
Connectivity Technology	Wireless (Bluetooth)
Bluetooth Version	6.0
Ear Placement	Open Ear
Water Resistance Level	IPX6 Water Resistant
Control Type	Touch Control
Battery Life (Earbuds)	Up to 8 hours

Feature	Detail
Total Playtime (with Case)	Up to 24 hours
Charging Time	Approx. 1 hour
Material	Plastic
Included Components	Headphones, Charging Case, Type-C Cable, Lanyard, User Manual
Batteries	1 AA batteries required (included)

11. WARRANTY AND SUPPORT

Monster products are designed and manufactured to the highest quality standards. For detailed warranty information and customer support, please refer to the warranty card included in your product packaging or visit the official Monster website. Keep your proof of purchase for warranty claims.

For further assistance, you may contact Monster customer support through their official channels.