

## Lemnoi SG7

# Lemnoi SG7 7-inch Kids Digital Alarm Clock Instruction Manual

Model: SG7

## 1. INTRODUCTION

Thank you for choosing the Lemnoi SG7 7-inch Kids Digital Alarm Clock. This device is designed to assist children with sleep training and daily routines through a colorful, interactive display and customizable alarms. Please read this manual carefully to ensure proper setup and operation.

## 2. PRODUCT OVERVIEW

The Lemnoi SG7 features a 7-inch colorful LCD screen that displays time, date, day, month, year, and temperature. It offers multiple clock interface styles, up to 15 customizable alarms with 19 specific scene labels, 5 adjustable brightness levels, and support for 5 languages. It also includes stopwatch, timer, snooze, and reward badge functions.



Figure 1: Front view of the Lemnoi SG7 Kids Digital Alarm Clock.

### 3. SETUP

#### 3.1 Power Connection

The alarm clock is powered by a corded electric connection via a USB port. Connect the provided USB cable to the Type-C power port on the device and plug the adapter into a standard electrical outlet. The device includes a nonstandard battery for backup purposes, but it is primarily designed for continuous power via the cord.

# 7" Digital Alarm Clock for Kids

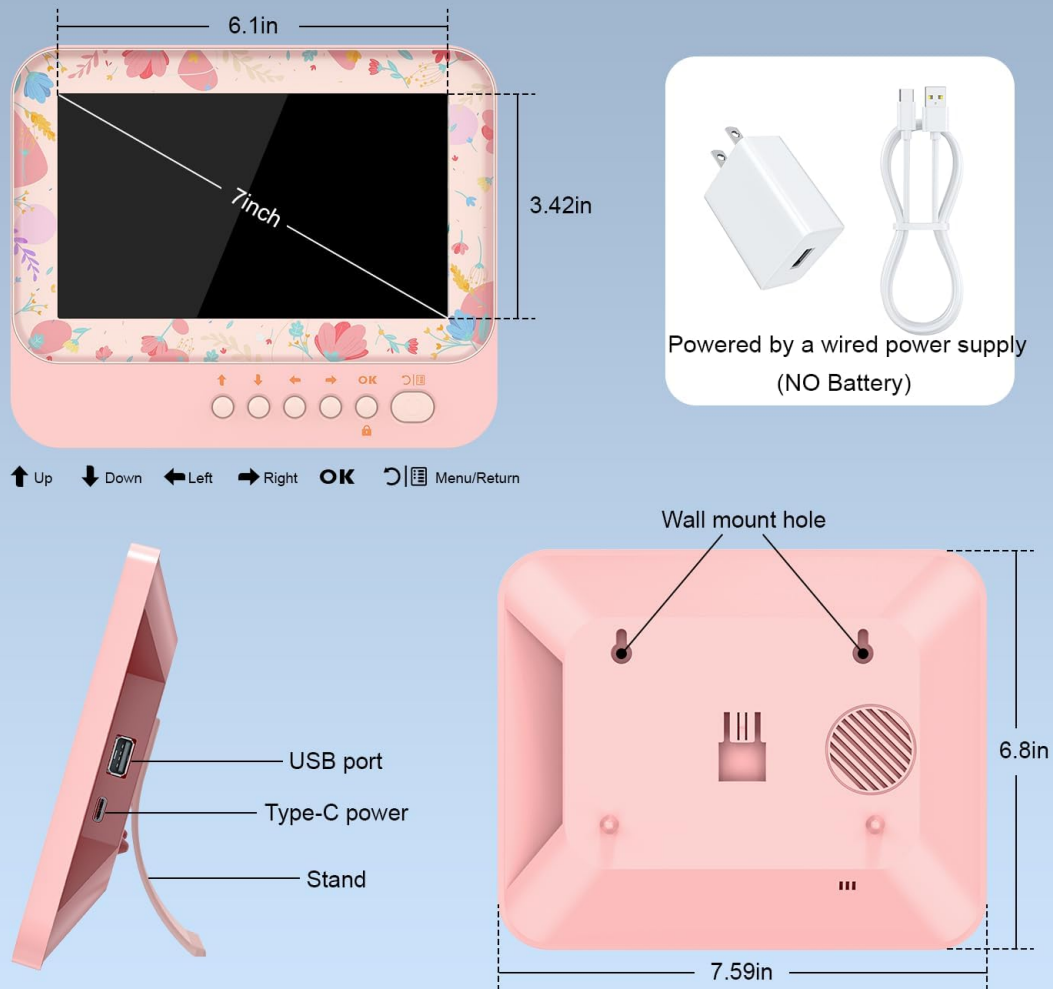


Figure 2: Back panel with USB and Type-C power ports.

## 3.2 Initial Time and Date Setting

Upon first power-up, or after a prolonged power outage, you may need to set the correct time and date. Use the navigation buttons (Up, Down, Left, Right, OK, Menu/Return) located on the back of the device to navigate the settings menu. Refer to the 'Date & Time' section in the menu to adjust these parameters.

Your browser does not support the video tag.

Video 1: An overview of the Kids Alarm Clock features, including basic setup and display options. This video is provided by the seller.

## 4. OPERATING INSTRUCTIONS

### 4.1 Setting Alarms and Scene Labels

The clock supports up to 15 individual alarms. Each alarm can be associated with one of 19 specific scene labels (e.g., 'get up', 'watch TV', 'do homework', 'taking a bath'). When an alarm activates, the corresponding cartoon scene image will display on the screen, along with the time, to help children understand their scheduled activity.

# Kids clocks for learning time

15 alarm settings with 19 colorful labels



Figure 3: Example of alarm settings with visual scene labels.

## 4.2 Display Modes and Brightness

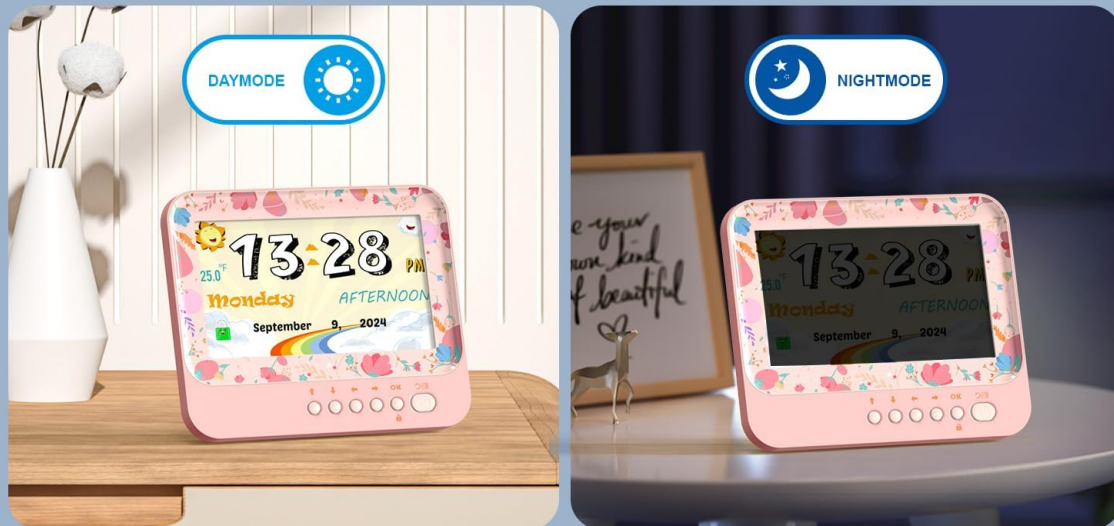
Choose from 6 different clock interface styles to suit your child's preference. The display brightness can be adjusted through 5 levels, or set to an automatic adjustment function that adapts to ambient light. You can also customize sleep time brightness settings.

# 6 Display Modes



Figure 4: Various display modes available for the clock.

# Auto Adjusts Brightness During Sleep



## 5 Levels of Brightness Available

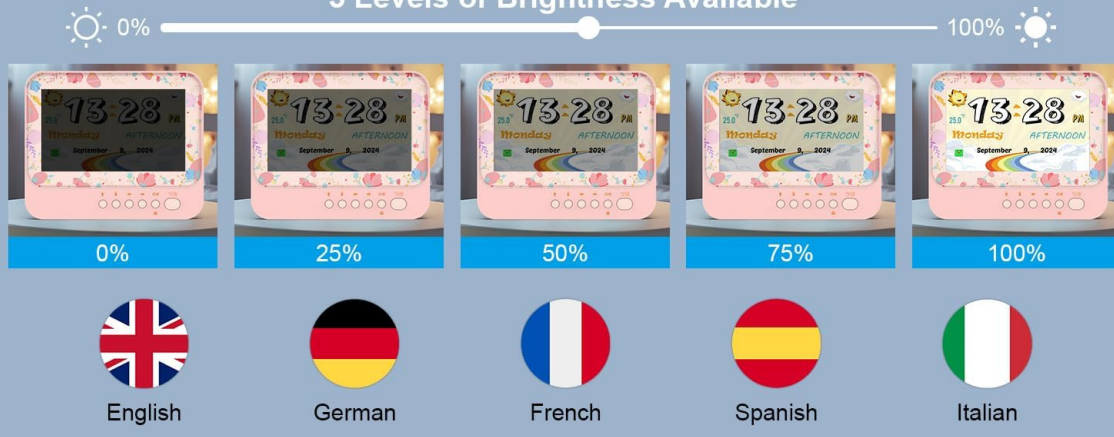


Figure 5: Brightness adjustment options and automatic dimming feature.

### 4.3 Timer, Stopwatch, and Snooze

Utilize the integrated countdown timer for activities like timed naps or games, promoting self-discipline. A stopwatch function is also available. When an alarm sounds, the snooze function provides an additional 9 minutes of sleep before re-alarms.

### 4.4 Reward Badge System

The clock features a reward badge system. When an alarm activates, completed tasks can be checked off. Completing all set alarms can result in an A+ score, encouraging children to follow their schedule.

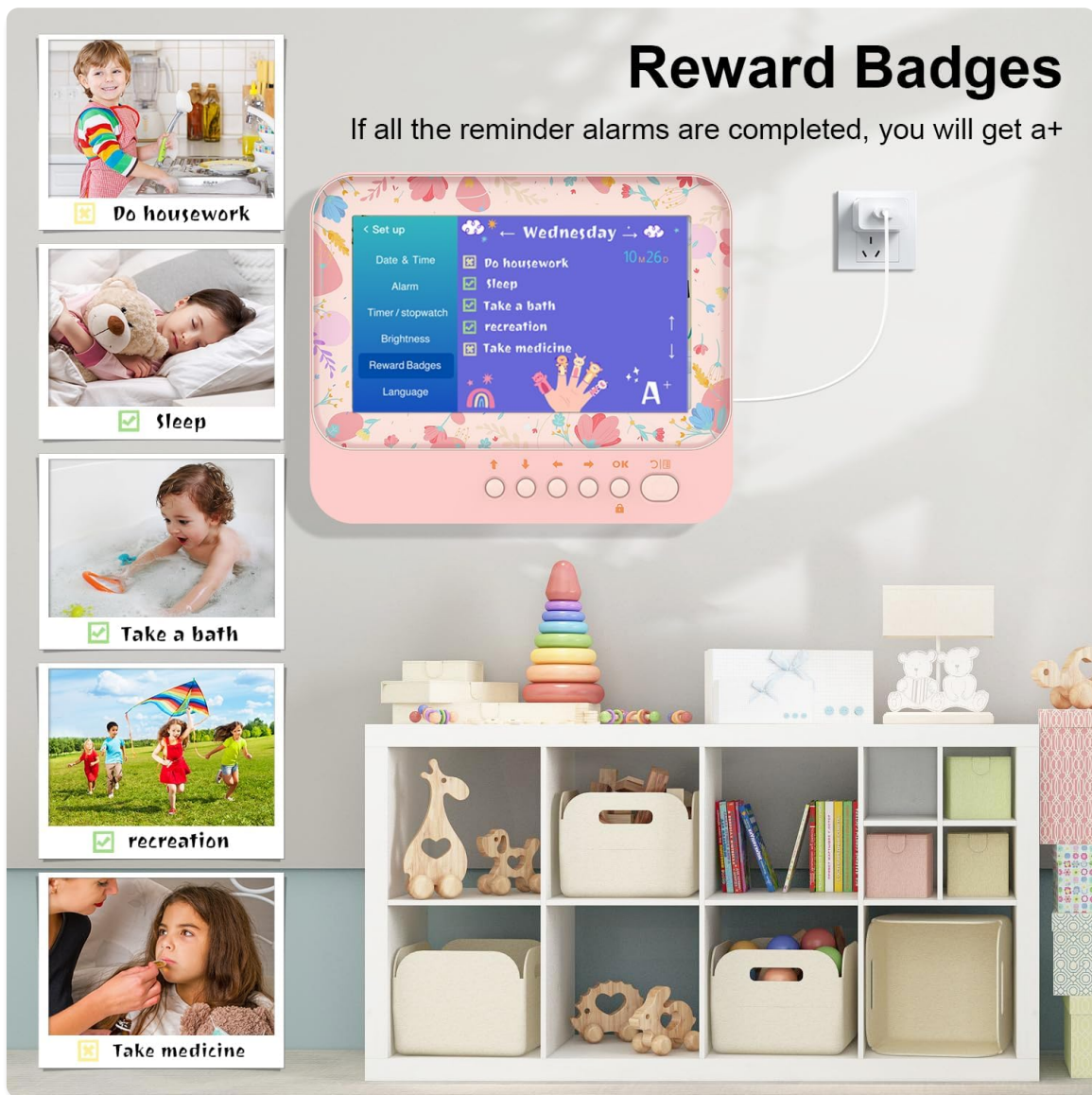


Figure 6: The reward badge interface for tracking completed tasks.

#### 4.5 Child Lock

To prevent accidental changes to settings, a child lock feature is included. Long press the 'OK' button to activate or deactivate the child lock.

### 5. MAINTENANCE

To clean the device, gently wipe the screen and casing with a soft, dry cloth. Avoid using abrasive cleaners or solvents. Ensure the device is unplugged before cleaning. Keep the device away from water and excessive moisture.

### 6. TROUBLESHOOTING

- **Display not turning on:** Ensure the USB cable is securely connected to the device and the power adapter is plugged into a working outlet.
- **Alarm not sounding:** Check that the alarm is enabled in the settings menu and the volume is not set to zero.
- **Incorrect time/date:** Access the 'Date & Time' settings in the menu to manually adjust.
- **Buttons unresponsive:** Check if the child lock is activated. Deactivate it by long-pressing the 'OK' button.

For further assistance, please refer to the detailed user manual included with your product or contact Lemnoi customer support.

## 7. SPECIFICATIONS

Feature	Detail
Brand	Lemnoi
Model Number	SG7
Display Type	LCD
Product Dimensions	6.2"W x 7.67"H
Power Source	Corded Electric
Battery	1 Nonstandard Battery (included)
Connectivity Technology	USB
Languages Supported	English, French, Italian, Spanish, German

## 8. WARRANTY AND SUPPORT

For warranty information and customer support, please refer to the documentation included in your product packaging or visit the official Lemnoi website. Keep your purchase receipt for warranty claims.