

LUXRITE LR22637

LUXRITE 2 Inch Square LED Recessed Ceiling Light User Manual

Model: LR22637

Brand: LUXRITE

INTRODUCTION

This manual provides detailed instructions for the installation, operation, and maintenance of your LUXRITE 2 Inch Square LED Recessed Ceiling Light. Please read this manual thoroughly before installation and keep it for future reference. This product is designed for indoor use and offers versatile lighting options with its selectable color temperature and dimmable features.

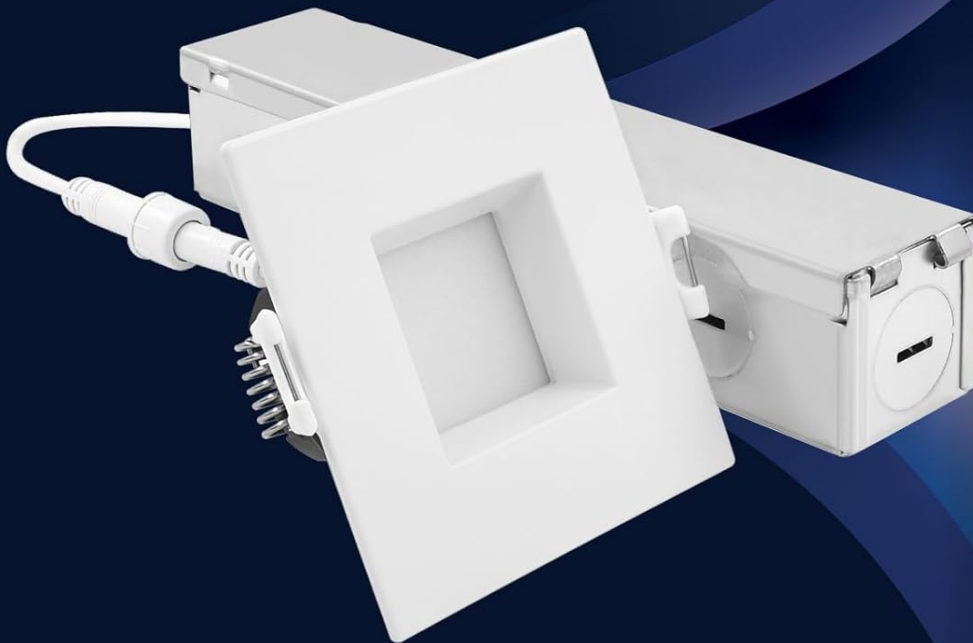
PRODUCT FEATURES

- **5 Color Adjustable (5CCT):** Easily select between 2700K (Warm White), 3000K (Soft White), 3500K (Natural White), 4000K (Cool White), and 5000K (Bright White) using a switch during installation or later.
- **High Brightness:** Delivers 660 lumens of light with only 8 watts of power, comparable to a 60-watt incandescent bulb.
- **Dimmable:** Smooth dimming capability from 100% down to 10% when used with compatible dimmers.
- **Durable and Long-lasting:** Rated for up to 50,000 hours of operation, reducing the need for frequent replacements.
- **Wet Location & IC Rated:** Suitable for use in damp or wet environments and safe for direct contact with insulation.
- **Canless Design:** Requires less than 2 inches of clearance, eliminating the need for a separate housing.
- **Wide Beam Angle:** Provides a 100-degree beam angle for broad light distribution.
- **Reliable Performance:** Offers zero flickering and zero delay upon activation.
- **Certifications:** Energy Star rated and ETL Listed for safety and efficiency.

2" REGRESSED HIGH OUTPUT MINI PANEL



COLOR SELECTABLE
27K | 30K | 35K | 40K | 50K



Zero Delay

Zero Flickering Light

Zero Worries

LUXRITE®

Image: Overview of the LUXRITE 2 Inch Square LED Recessed Light highlighting its key features such as lumen output, lifespan, ratings, wattage, dimmability, and color temperature selection.

PACKAGE CONTENTS

- 1 x LUXRITE 2 Inch Square LED Recessed Light
- 1 x Junction Box with CCT Select Switch



Image: The LUXRITE 2 Inch Square LED Recessed Light shown with its integrated J-Box, illustrating the main components included.

SPECIFICATIONS

Brand	LUXRITE
Model Number	LR22637
Light Fixture Form	Recessed
Dimensions (Light)	3.1"L x 3.1"W x 1.7"H
Cutout Size	2.16 inches
Regressed Depth	7/16 inches
Wattage	8 Watts
Brightness	660 Lumens
Color Temperature	5CCT Selectable (2700K/3000K/3500K/4000K/5000K)
Voltage	120 Volts
Lifespan	50,000 Hours
Material	Aluminum
Finish Type	White
CRI	80.0

Ratings	Wet Location Rated, IC Rated, ETL Listed, Energy Star Rated
Indoor/Outdoor Usage	Indoor Use Only



CUTOUT: 2.16"



REGRESSED DEPTH: 7/16"

DIMENSIONS

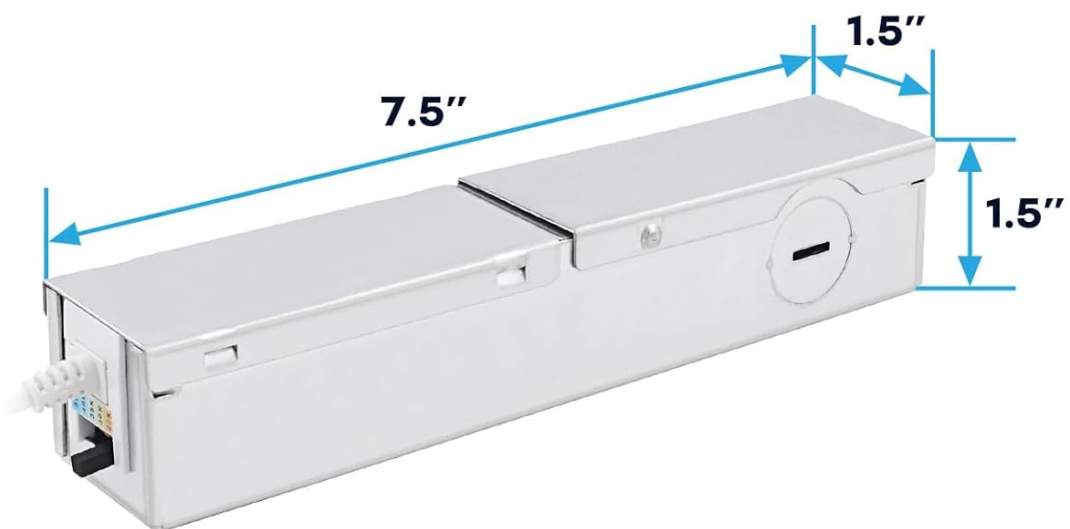


Image: Detailed dimensions of the recessed light and its junction box, including the required cutout size for installation.

SAFETY INFORMATION

WARNING: Risk of electric shock. Disconnect power at the fuse or circuit breaker before installing or servicing.

- Installation should be performed by a qualified electrician or trained professional.
- Ensure all electrical connections comply with local codes and ordinances.
- Do not install with damaged components. Inspect the product upon receipt.
- This product is designed for 120V hardwiring. Ensure the power supply matches this requirement.
- Do not modify the fixture or its components.

INSTALLATION GUIDE

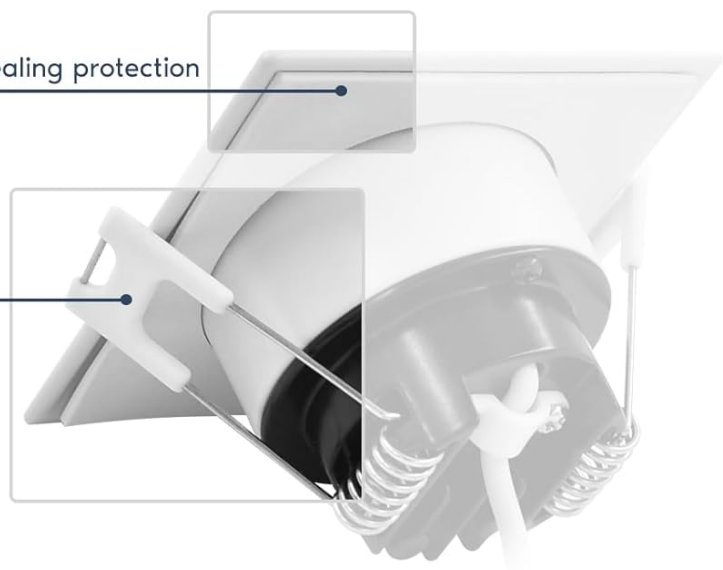
1. **Turn Off Power:** Before beginning installation, ensure the power supply to the installation area is turned off at the circuit breaker or fuse box.
2. **Prepare Opening:** Cut a hole in the ceiling with a diameter of 2.16 inches (refer to the dimensions image for precise measurements). Ensure there is at least 2 inches of clearance above the ceiling for the fixture.
3. **Connect Wiring:** Open the junction box cover. Connect the house wiring (live, neutral, ground) to the corresponding wires inside the junction box using appropriate wire connectors. Ensure all connections are secure. The fixture operates on 120V hardwiring.
4. **Select Color Temperature (CCT):** Locate the CCT selectable switch inside the junction box. Before closing the junction box, slide the switch to your desired color temperature (2700K, 3000K, 3500K, 4000K, or 5000K). You can test the colors by temporarily restoring power if safe to do so, then disconnecting power again.
5. **Secure Junction Box:** Place the junction box inside the ceiling opening.
6. **Connect Light Fixture:** Connect the light fixture's cable to the junction box using the easy twist connection.
7. **Insert Light Fixture:** Gently push the light fixture into the ceiling opening. The spring-loaded clips will automatically secure the fixture flush against the ceiling.
8. **Restore Power:** Once the fixture is securely installed, restore power at the circuit breaker.

HIGH OUTPUT LIGHT



Increased sealing protection

Spring loaded clips for flush to ceiling finish



Easy twist connection

◀ 13.5in ▶

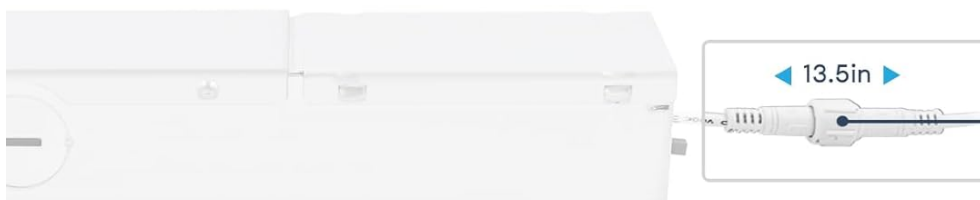


Image: Illustration of the light's spring-loaded clips for secure, flush installation and the easy twist connection point to the junction box.

OPERATING INSTRUCTIONS

Color Temperature Selection

The LUXRITE recessed light features a 5CCT selectable switch located inside the junction box. This switch allows you to choose from five different color temperatures:

- 2700K (Warm White)
- 3000K (Soft White)
- 3500K (Natural White)
- 4000K (Cool White)
- 5000K (Bright White)

To change the color temperature after initial installation, you will need to access the junction box. Ensure power is disconnected before opening the junction box and adjusting the switch. Once the desired CCT is selected, close the box and restore power.

5 COLOR OPTIONS



Decorate your space with the perfect lighting solution that offers 5 color temperatures that you can choose from all in 1 lighting fixture

Image: Visual representation of the five selectable color temperatures (2700K, 3000K, 3500K, 4000K, 5000K) in a kitchen setting.

Dimming Functionality

This LED recessed light is dimmable, allowing you to adjust the light output from 100% down to 10% using a compatible LED dimmer switch (sold separately). For optimal performance and to avoid flickering, use dimmers specifically designed for LED lighting.

Compatible Dimmers:

- **LUTRON:** DVCL-153PR-WH, CTCL-153PDH-WH, TGCL-153PH-WH, MACL-153MH-WH, P-PKG1W-WH-R
- **LEVITON:** R62-06674-POW, R12-06672-1LW, R50-IPL06-10M
- **EATON:** SAL06P-LA-K



Image: Visual demonstration of dimming capabilities in a bathroom setting, alongside a list of recommended compatible dimmer switches.

MAINTENANCE

The LUXRITE LED Recessed Light is designed for long-term, maintenance-free operation with a lifespan of up to 50,000 hours. No bulb replacement is necessary.

- **Cleaning:** To clean the fixture, ensure power is off. Use a soft, dry, or slightly damp cloth. Do not use abrasive cleaners or solvents.
- **Inspection:** Periodically inspect the fixture for any signs of damage or loose connections. If any issues are found, disconnect power and consult a qualified electrician.

TROUBLESHOOTING

If you experience issues with your LUXRITE LED Recessed Light, please refer to the following common troubleshooting steps:

Problem	Possible Cause	Solution
Light does not turn on.	No power supply; Loose wiring connection; Faulty switch or dimmer.	Check circuit breaker/fuse. Ensure all wiring connections are secure. Test the switch/dimmer with another known working fixture.
Light flickers or dims inconsistently.	Incompatible dimmer switch; Loose wiring; Overloaded circuit.	Ensure you are using a compatible LED dimmer (refer to "Compatible Dimmers" section). Check wiring connections. Reduce the load on the circuit if multiple fixtures are connected.
Incorrect color temperature.	CCT switch set incorrectly.	Disconnect power, open the junction box, and adjust the CCT switch to the desired setting.
Light is too dim or too bright.	Dimmer setting; Incorrect CCT selection.	Adjust the dimmer switch. If not using a dimmer, ensure the CCT is set to your preference (e.g., 5000K for brightest).

If the problem persists after attempting these troubleshooting steps, please contact LUXRITE customer support.

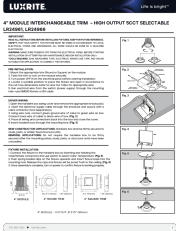
WARRANTY AND SUPPORT

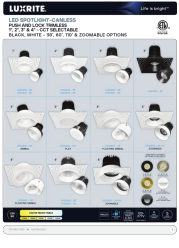

The LUXRITE 2 Inch Square LED Recessed Ceiling Light is backed by a **5-year warranty** from the date of purchase. This warranty covers defects in materials and workmanship under normal use.

For warranty claims, technical assistance, or any questions regarding your product, please contact LUXRITE customer support through their official website or the retailer where the product was purchased. Please have your model number (LR22637) and proof of purchase ready when contacting support.

For more information, visit the official LUXRITE store:[LUXRITE Store](#)

Related Documents - LR22637

	<p>Luxrite 4" Module Interchangeable Trim Installation Guide - LR24961, LR24966</p> <p>Detailed installation instructions and specifications for the Luxrite 4" Module Interchangeable Trim, High Output 5CCT Selectable LED downlight (models LR24961, LR24966). Learn how to safely install and wire this versatile lighting fixture.</p>
---	---

	<p>Luxrite LED Lay-In Backlit Flat Panel: 5CCT & Wattage Selectable</p> <p>Explore the Luxrite LED Lay-In Backlit Flat Panel series, featuring 5CCT color temperature and wattage selectability. Available in 1x4', 2x2', and 2x4' sizes, these sensor-ready fixtures offer energy efficiency, dimmability, and are IC rated for damp locations, backed by a 5-year warranty.</p>
	<p>Luxrite LED Spotlight-Canless: Push and Lock Trimless Installation Guide</p> <p>Comprehensive guide to Luxrite's LED Spotlight-Canless series, featuring push and lock trimless installation, CCT selectable options, and various beam angles. Includes detailed specifications, photometric data, and trim replacement options.</p>
	<p>Luxrite 4" & 6" Fire Rated Recessed Mini Flat Panel Light - CCT Selectable Installation Guide</p> <p>Installation guide for the Luxrite LR23496 and LR23497 4-inch and 6-inch fire-rated recessed mini flat panel lights. Learn how to safely install your CCT selectable fixture.</p>
	<p>Luxrite 4" & 6" Recessed Mini Flat Panel - 5 CCT Selectable Installation Guide</p> <p>Comprehensive installation guide for Luxrite 4-inch and 6-inch Recessed Mini Flat Panel LED lights (LR23741, LR23745). Covers safety warnings, required tools, step-by-step installation procedures, and product specifications including CCT selection and operating conditions.</p>
	<p>Luxrite LED Outdoor Wall Sconce - Up/Down & CCT Selectable LR40300, LR40301, LR40302</p> <p>Detailed specifications for the Luxrite LED Outdoor Wall Sconce. Features up/down light distribution, 5-step CCT selectable (2700K-5000K), available in Black, White, and Brushed Nickel finishes. Includes electrical, photometric, and dimensional data.</p>