



Manuals.plus /

› JOYMOR /

› JOYMOR Wooden Pretend Play Hospital Office Instruction Manual

JOYMOR B0DSL8FFS

JOYMOR Wooden Pretend Play Hospital Office Instruction Manual

Model: B0DSL8FFS

1. INTRODUCTION

Thank you for choosing the JOYMOR Wooden Pretend Play Hospital Office. This playset is designed to provide toddlers with an engaging and educational experience, fostering imaginative play, empathy, and social skills. This manual provides essential information for assembly, safe operation, and maintenance of your new playset.

Please read this manual thoroughly before assembly and use, and retain it for future reference.

2. SAFETY INFORMATION

Your child's safety is paramount. Please adhere to the following safety guidelines:

- **Adult Supervision:** Always ensure adult supervision during play.
- **Age Recommendation:** This playset is recommended for children aged 3 years and up. Small parts may pose a choking hazard for younger children.
- **Assembly:** Assembly must be performed by an adult. Ensure all fasteners are securely tightened before use.
- **Inspection:** Regularly inspect the playset for any loose parts, damage, or wear. Discontinue use if any damage is found and repair or replace components as necessary.
- **Placement:** Place the playset on a flat, stable surface to prevent tipping. Keep away from stairs, windows, and heat sources.
- **Cleaning:** Clean with a damp cloth. Do not use harsh chemicals or abrasive cleaners.
- **No Warning Applicable:** As stated in product information, no warning is applicable for this product.

3. PACKAGE CONTENTS

Before assembly, please verify that all components are present. The package includes:

- Wooden doctor kit components (main hospital structure, examination desk, IV stand)
- Various medical accessories (stethoscope, syringe, thermometer, blood pressure cuff, eye chart, pill bottles, etc.)
- Assembly hardware (screws, dowels, etc.)
- Assembly instructions (this manual)



Figure 3.1: Overview of the JOYMOR Wooden Pretend Play Hospital Office and included accessories.

4. SETUP AND ASSEMBLY

Assembly of the JOYMOR Wooden Pretend Play Hospital Office requires adult supervision and basic tools (e.g., screwdriver). Follow the step-by-step instructions provided below.

4.1 Unpacking

1. Carefully open the packaging and remove all components.

2. Lay out all wooden pieces and accessories on a clean, flat surface.
3. Verify all parts against the included parts list (if provided separately, or refer to Section 3).

4.2 Main Hospital Structure Assembly

Assemble the main hospital structure first. This typically involves connecting side panels to the back panel and base using screws and dowels.

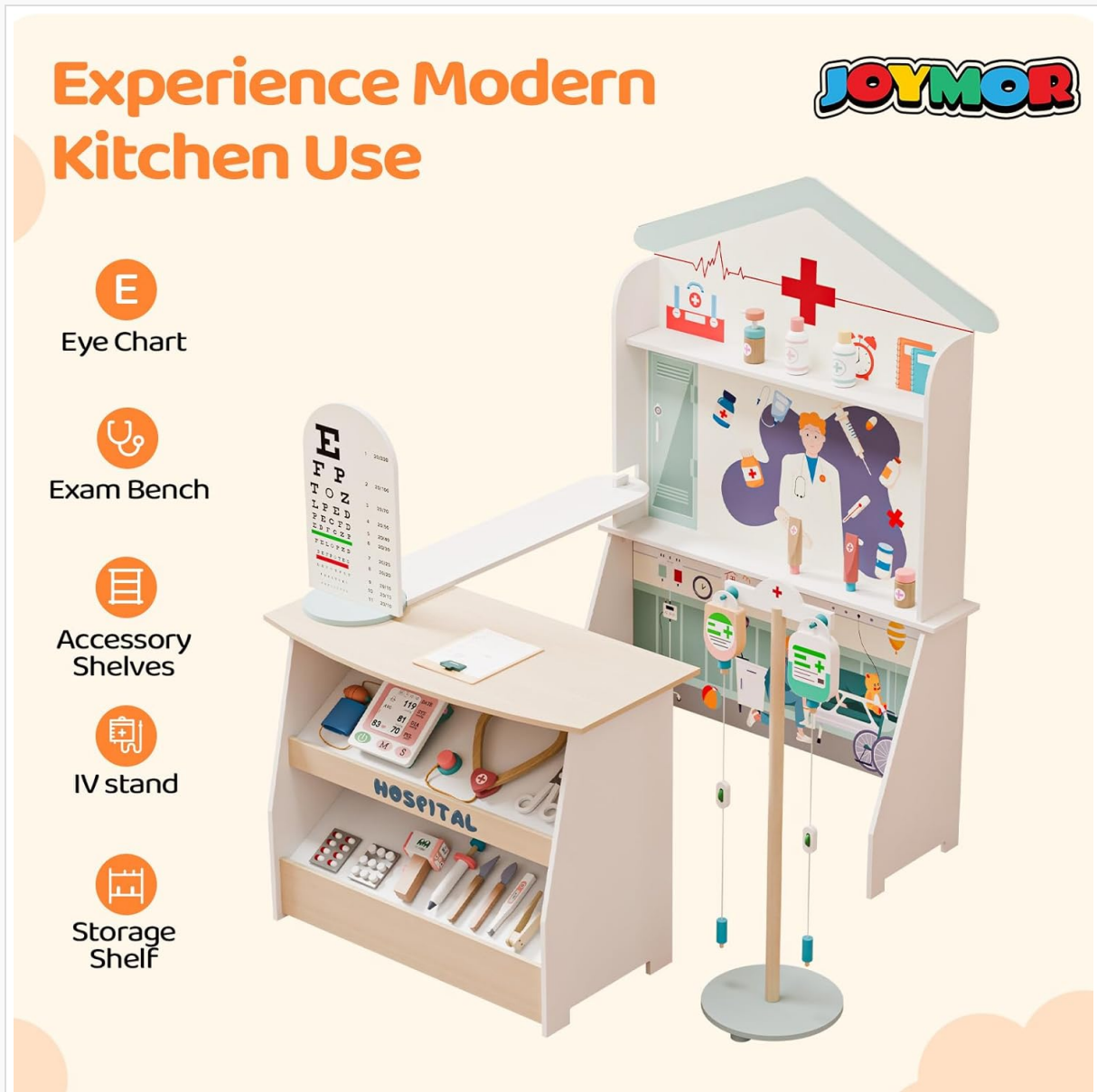


Figure 4.1: Key components of the playset, including the eye chart, exam bench, accessory shelves, IV stand, and storage shelf, highlighting their positions.

4.3 Examination Desk Assembly


Attach the examination desk to the main hospital structure or assemble it as a separate unit, depending on the design. Ensure the connection is stable.

4.4 Accessory Placement

Once the main structures are assembled, place the various medical accessories onto the designated shelves and areas. The IV stand can be placed next to the main hospital structure.

Outstanding Medical Center Set



 Ample Storage



 High Quality

Figure 4.3: The outstanding medical center set, showcasing ample storage on the examination desk and high-quality construction of the hospital structure.

5. OPERATING THE PLAYSET (PLAY GUIDE)

The JOYMOR Wooden Pretend Play Hospital Office encourages open-ended imaginative play. Here are some suggestions for engaging play scenarios:

- **Doctor's Visit:** Children can take turns being the doctor, nurse, or patient. Use the stethoscope to listen to heartbeats, the thermometer to check temperature, and the syringe for pretend injections.
- **Eye Exam:** Utilize the eye chart to conduct pretend vision tests.
- **Patient Care:** Use the IV stand and bags for pretend infusions. The blood pressure cuff can be used to monitor a patient's blood pressure.
- **Record Keeping:** Use the medical card and patient file for pretend record-keeping, enhancing literacy and organizational skills.

Enhance Play Experience

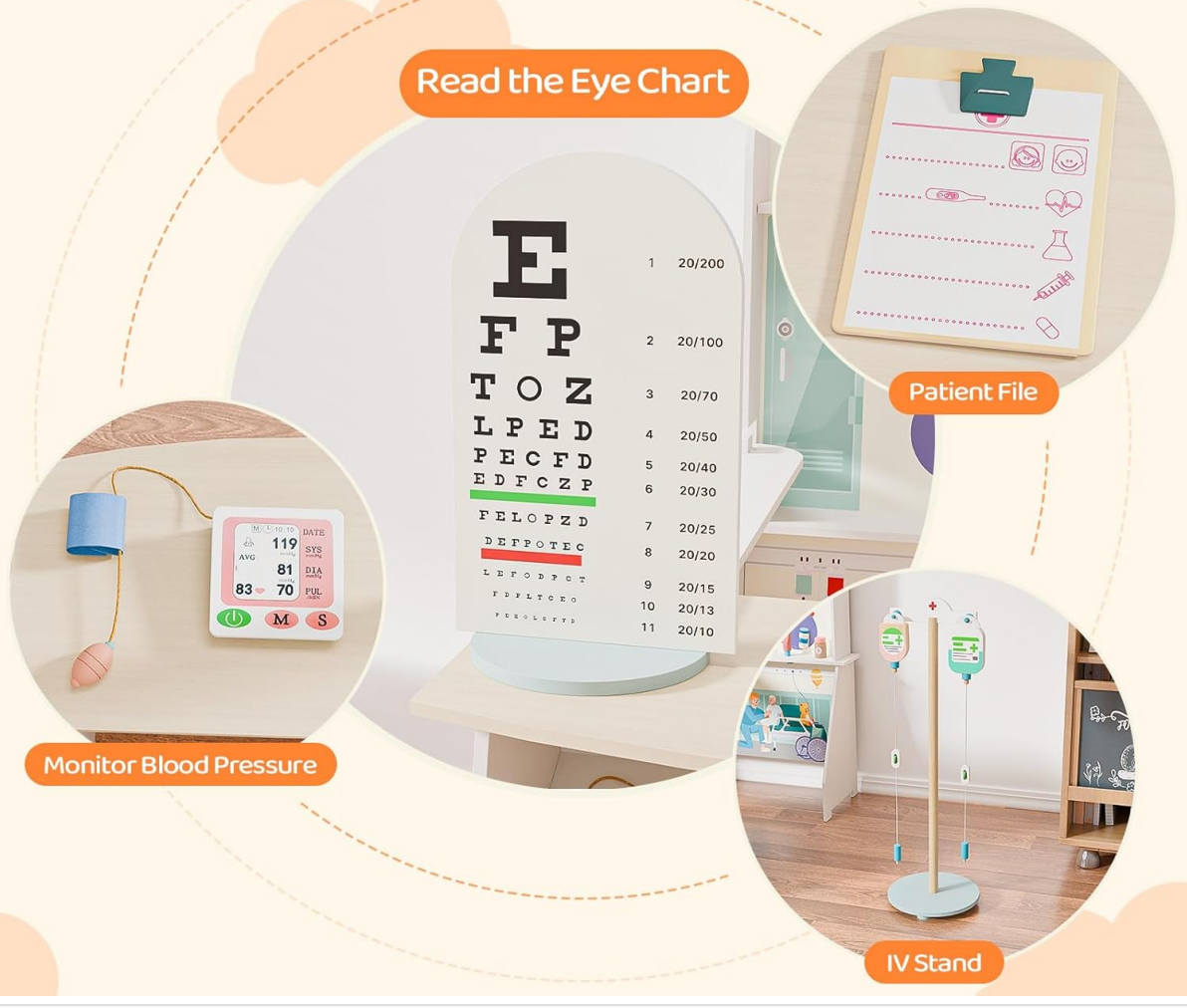


Figure 5.1: Enhancing play experience by engaging with the eye chart, blood pressure monitor, IV stand, and patient file.

Play Medical Center Set With Friends



Figure 5.2: Children playing together with the medical center set, fostering social interaction and cooperative play.

Play Medical Center Set



Fun Design



Educational Value



Interactive Features



Safety & Stability



Figure 5.3: Key benefits of the playset, including its fun design, educational value, interactive features, and safety and stability.



Figure 5.4: Multiple perspectives of the large interactive play medical center, demonstrating its versatility and engaging design.

6. MAINTENANCE AND CARE

To ensure the longevity and safety of your JOYMOR Wooden Pretend Play Hospital Office, follow these maintenance guidelines:

- **Cleaning:** Wipe surfaces with a soft, damp cloth. For stubborn marks, use a mild soap solution and wipe dry immediately. Avoid excessive moisture.
- **Avoid Harsh Chemicals:** Do not use abrasive cleaners, solvents, or strong detergents, as these can damage the wood finish and painted surfaces.
- **Regular Inspection:** Periodically check all screws and connections to ensure they remain tight. Retighten if necessary.
- **Storage:** Store the playset in a dry environment, away from direct sunlight and extreme temperatures, which can cause wood warping or cracking.
- **Damage:** If any part of the playset becomes damaged or broken, discontinue use immediately and contact customer support for replacement parts or repair advice.

7. TROUBLESHOOTING

This section addresses common issues you might encounter with your playset.

Problem	Possible Cause	Solution
Playset feels wobbly after assembly.	Screws or fasteners are not fully tightened.	Check all assembly points and tighten screws securely. Ensure the playset is on a flat surface.
A wooden piece appears warped or cracked.	Exposure to extreme temperature changes or moisture.	Discontinue use. Contact customer support for a replacement part. Store in a dry, stable environment.
Missing a part during unboxing.	Packaging error.	Refer to the parts list and contact customer support with details of the missing component.

8. SPECIFICATIONS

Detailed specifications for the JOYMOR Wooden Pretend Play Hospital Office:

- **Model:** B0DSL8FFS
- **Brand:** JOYMOR
- **Product Dimensions:** 26.77 x 34.65 x 39.84 inches (L x W x H)
- **Recommended Age:** 3 years and up
- **Material:** Premium, sustainable wood
- **Manufacturer:** JOYMOR



Figure 8.1: Detailed dimensions of the playset, illustrating its size for proper placement and understanding.

9. WARRANTY AND SUPPORT

9.1 Warranty Information

JOYMOR products are designed for durability and quality. For specific warranty details regarding your Wooden Pretend Play Hospital Office, please refer to the warranty card included in your original packaging or visit the official JOYMOR website. Typically, products are covered against manufacturing defects for a limited period from the date of purchase.

9.2 Customer Support

If you have any questions, require assistance with assembly, or need to report a missing or damaged part, please contact JOYMOR customer support:

- **Website:** www.joymor.com
- **Email:** support@joymor.com
- Please have your product model (B0DSL8FFS) and purchase date ready when contacting support.

