

roborock roborock Q10 S5

# Roborock Q10 S5 Robot Vacuum and Mop Cleaner

User Instruction Manual

## INTRODUCTION

The Roborock Q10 S5 is an advanced robot vacuum and mop cleaner designed to provide comprehensive floor care. Featuring powerful 10,000 Pa HyperForce suction, a Dual Anti-Tangle System, and the innovative VibraRise 2.0 Mopping System, it effectively tackles dirt, debris, and stubborn stains. Its intelligent ReactiveTech Obstacle Avoidance and PreciSense LiDAR Navigation ensure efficient and thorough cleaning across various floor types, including carpets and hard floors. This manual provides essential information for setting up, operating, and maintaining your device.

## WHAT'S IN THE BOX

Please ensure all components are present before beginning setup:

- 1x Roborock Q10 S5 Robot Vacuum
- 1x Charging Dock
- 1x Adapter
- 1x VibraRise Mop Module
- 1x VibraRise Mop
- 1x Moisture-Proof Mat
- 1x User Manual (for detailed instructions)

## SETUP

### Initial Charging and App Installation

Before first use, place the robot vacuum on its charging dock. Ensure the adapter is connected to the dock and a

power outlet. Download the "Roborock" app from your device's app store. Follow the in-app instructions to connect your robot vacuum to your home Wi-Fi network (supports 2.4G Wi-Fi only) and complete the initial mapping process.



The Roborock Q10 S5 robot vacuum on its charging dock, ready for initial setup and app connection.

## Mop Pad Installation and Removal

The VibraRise Mop Module can be easily attached or removed from the underside of the robot. For optimal mopping performance, pre-wet the mop pad before attaching it. The robot can automatically lift the mop pad when detecting carpets, but for thicker carpets, it is recommended to remove the mop pad for vacuum-only cleaning.

## OPERATING INSTRUCTIONS

### Vacuuming

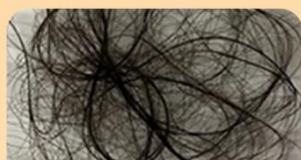
The Roborock Q10 S5 features 10,000 Pa HyperForce suction power and a Dual Anti-Tangle System, making it highly effective for vacuuming various floor types. You can select different suction modes (e.g., Turbo, Max) via the app. For carpets, the robot automatically adjusts suction power for deeper cleaning.

## Impressive HyperForce Suction

Root Out Hair From Crevices and Carpets



**10,000 Pa**  
HyperForce Suction Power



Long Hair & Pet Fur



Food Crumbs



Pet Food Pellets



Coffee Grounds

The Roborock Q10 S5 showcasing its powerful 10,000 Pa HyperForce suction.

## Mopping

The VibraRise 2.0 Mopping System provides high-frequency scrubbing to tackle stubborn stains. The Auto-Lifting Mopping System intelligently raises the mop when carpets are detected, allowing seamless transitions between hard floors and carpets without manual intervention. For deep cleaning, select the "DEEP+" mopping mode in the app.

# VibraRise 2.0 Mopping System

Tackle Stubborn Stains With Ease



**3000** Times/Min  
Vibration Frequency

**Dual-Zone**  
Active Vibrating with Reduced Water Stain



The VibraRise 2.0 Mopping System in action, showing its vibrating mop pad for effective stain removal.

## Navigation and Obstacle Avoidance

Equipped with PreciSense LiDAR Navigation, the robot creates real-time 360° maps for efficient route planning and supports multi-floor mapping. ReactiveTech Obstacle Avoidance, powered by structured light, helps the robot detect and navigate around common household items, reducing the chance of getting stuck. You can also set Smart No-Go Zones in the app to prevent the robot from entering specific areas.

# Reactive Tech Obstacle Avoidance

Ready to Avoid Troubles. Every Time.



The robot intelligently avoids obstacles using its ReactiveTech system.

## App Control and Smart Features

The Roborock app provides full control over your device. You can initiate temporary cleaning for specific areas, enable Auto Boost on Carpet for increased suction, select High-Intensity Mopping, and ensure cleaning along floor direction for optimal results. The app also features a Child Lock function to prevent unintended operation.

# Roborock App

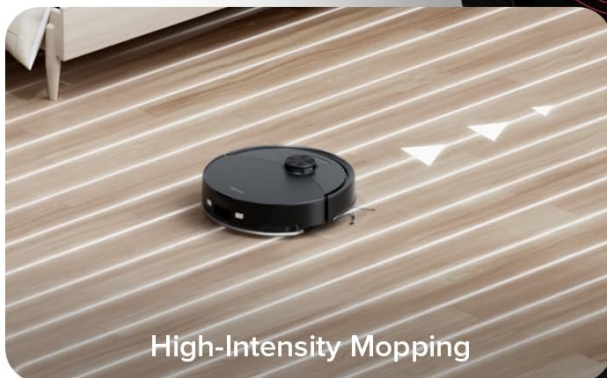
Tap, Tap, Clean



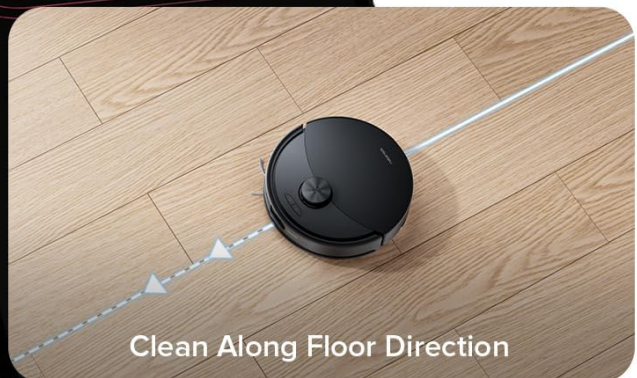
Temporary Cleaning



Auto Boost on Carpet



High-Intensity Mopping



Clean Along Floor Direction

The Roborock app offers various cleaning modes and settings for customized floor care.

## MAINTENANCE

### Dustbin Emptying

The robot features a combined dustbin and water tank unit. To empty the dustbin, open the top cover of the robot, remove the unit, and open the dustbin compartment to discard collected debris. Regular emptying ensures optimal suction performance.

# Upgraded Design for Long-Lasting Cleaning

**500**ml

Dustbin Capacity

**200**ml

Water Tank Capacity

**150**min

Maximum Runtime

**1,937**sqft\*

Maximum Vacuuming Area



\*Based on Roborock internal testing. Actual results may vary depending on usage conditions.

The integrated dustbin and water tank unit, showing the dustbin capacity.

## Mop Pad Cleaning

After mopping, detach the VibraRise Mop from its module. The mop pad is washable and should be cleaned regularly to maintain hygiene and mopping effectiveness. Allow the mop pad to air dry completely before reattaching or storing.

## Filter Cleaning

The robot uses a washable filter. It is recommended to clean the filter every two weeks to a month, depending on usage. Wash the filter under running water and ensure it is completely dry before placing it back into the dustbin unit.

## Brush Maintenance

The Dual Anti-Tangle Design helps reduce hair tangles on the main brush and side brush. Periodically check the brushes for any tangled hair or debris and remove them to ensure smooth operation and prevent performance degradation.

## TROUBLESHOOTING

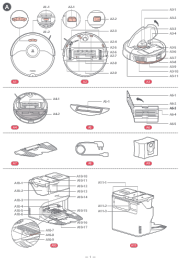

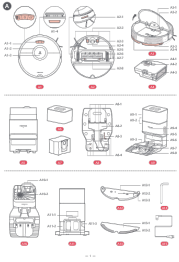
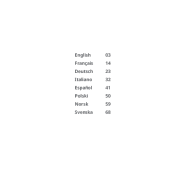


- **Robot gets stuck frequently:** Ensure the floor is clear of small objects like cables or small toys. Utilize the Smart No-Go Zones feature in the app for problematic areas.
- **Poor suction performance:** Check if the dustbin is full and empty it. Clean the washable filter thoroughly. Ensure the main brush and side brush are free from tangled hair or debris.
- **Ineffective mopping:** Pre-wet the mop pad before use. Ensure the water tank is filled. Check the mop pad for excessive dirt and clean it.
- **Robot does not charge:** Ensure the charging dock is properly connected to power and the robot is correctly docked. Clean the charging contacts on both the robot and the dock.
- **App connectivity issues:** Ensure your Wi-Fi network is 2.4G. Restart your router and the robot vacuum. Repair the device with the app if necessary.

## SPECIFICATIONS

Feature	Detail
Brand	roborock
Model Name	Roborock Q10 S5
Product Dimensions	16.14"L x 13.9"W x 3.98"H
Item Weight	10.34 pounds
Suction Power	10,000 Pa HyperForce
Battery Life	150 minutes
Voltage	120 Volts
Control Method	App, Touch
Compatible Devices	Roborock App
Filter Type	Washable

## WARRANTY AND SUPPORT

For warranty information, technical support, or common problems not covered in this manual, please refer to the official Roborock User Manual (PDF) available for download or visit the [Roborock Store](#). You may also find additional resources and FAQs on the official Roborock website.

	<p><a href="#">Roborock S7 Max Ultra Robot Vacuum and Mop Combo: Components and Assembly Guide</a></p> <p>A comprehensive guide detailing the components and assembly steps for the Roborock S7 Max Ultra robot vacuum and mop combo, featuring its docking station and accessories.</p>
	<p><a href="#">Roborock Qrevo Curv FAQ: Features, Advantages, and Comparisons</a></p> <p>Frequently asked questions about the Roborock Qrevo Curv robot vacuum cleaner, covering its key features, the advantages of its DuoDivide brush and FlexiArm Design Arc Side Brush, its multifunctional dock capabilities, and comparisons with the Qrevo Master.</p>
	<p><a href="#">Roborock Q7 Max+ Robot Vacuum Cleaner User Guide</a></p> <p>This visual guide details the components and assembly of the Roborock Q7 Max+ Robot Vacuum Cleaner and its Auto-Empty Dock Pure, offering insights into setup and maintenance.</p>
	<p><a href="#">Roborock Q80ULL Robot Vacuum and Mop Cleaner User Manual with Auto-Empty Dock</a></p> <p>Comprehensive user manual for the Roborock Q80ULL robot vacuum and mop cleaner, including safety information, product overview, installation, app connection, routine maintenance, basic parameters, and troubleshooting for models Q80ULL, CDZ12RR, CDZ20RR, AED06HRR, AED07HRR.</p>
	<p><a href="#">Roborock Q10 Series Robot Vacuum User Manual</a></p> <p>This user manual provides comprehensive instructions for the Roborock Q10 series robot vacuum cleaner, covering safety guidelines, product features, installation, app connectivity, usage, maintenance, troubleshooting, and technical specifications.</p>
	<p><a href="#">Roborock S7 Max Ultra Series Robotic Vacuum Cleaner User Manual</a></p> <p>Comprehensive user manual for the Roborock S7 Max Ultra Series robotic vacuum cleaner, covering setup, operation, maintenance, and troubleshooting for optimal performance.</p>