

manuals.plus /

› [roborock](#) /

› [roborock Q7 L5 Robot Vacuum and Mop Cleaner User Manual](#)

roborock Q7 L5

roborock Q7 L5 Robot Vacuum and Mop Cleaner User Manual

Model: Q7 L5
Brand: roborock

1. INTRODUCTION

This user manual provides essential information for the safe operation, maintenance, and troubleshooting of your roborock Q7 L5 Robot Vacuum and Mop Cleaner. Please read this manual thoroughly before using the product and retain it for future reference.



Figure 1.1: Roborock Q7 L5 Robot Vacuum and Mop Cleaner and its accompanying mobile application.

2. IMPORTANT SAFETY INSTRUCTIONS

To reduce the risk of injury or damage, read these safety instructions carefully when setting up, using, and maintaining your robot. Keep this manual in a safe place for future reference.

- Do not allow children to play with the robot. Supervise children and pets when the robot is operating.
- Use only the original power adapter and charging dock provided by the manufacturer.
- Ensure the robot is turned off and unplugged before performing any maintenance or cleaning.
- Do not use the robot in environments with open flames, flammable liquids, or explosive materials.
- Avoid operating the robot on wet surfaces or in areas with standing water.
- Clear the cleaning area of loose cables, small objects, and fragile items before operation to prevent entanglement or damage.

3. PRODUCT OVERVIEW

3.1. Components

The roborock Q7 L5 package includes the following components:

- Robot Vacuum (1)
- Charging Dock (1)
- Mop Module (1)
- Adapter (1)
- Moisture-Proof Mat (1)
- User Manual (1)

**World's
No. 1**

Robotic Vacuum Cleaner Brand in 2024

Source: IDC Quarterly Smart Home Device Tracker, 2024Q4

Enhanced Upgrade for Superior Cleaning

A worthwhile entry-level robot vacuum.



roborock **Q7 L5** **new**



**8000 Pa
Powerful Suction**



**Dual Anti-Tangle
Brush System**



**Electronic
Water Tank**

Figure 3.1: Overview of the Roborock Q7 L5 highlighting its main features.

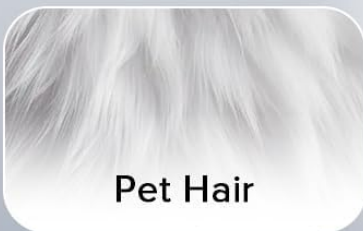
3.2. Key Features

The roborock Q7 L5 is designed with advanced features for efficient and thorough cleaning:

- **Ultra-Powerful Deep Suction:** HyperForce 8,000 Pa lifts dust, hair, and debris from floor cracks and deep within carpets for spotless floors.
- **Dual Anti-Tangle Brushes:** A specially designed main brush and zero-tangle side brush prevent hair wrap, ensuring smooth cleaning and minimal maintenance.
- **Precision LiDAR Navigation:** 360° laser mapping scans your home in real time, plans the most efficient route, and saves multiple floor maps for easy navigation.
- **Vacuum & Mop in One Go:** The 270 ml water tank allows simultaneous vacuuming and mopping. With three water levels and a removable mop pad, it tackles fine dust to dried-on stains.
- **Tailor Every Clean to Your Home:** Set zones, schedules, and suction levels through the Roborock App to customize each clean to your home's layout and routine.
- **Start Cleaning with Your Voice:** Control cleaning with your voice through Alexa, Siri, or Google Home.
- **Avoids Trouble Before It Starts:** Automatically identifies areas like cables or table legs and suggests no-go zones to avoid getting stuck or interrupted.

8000 Pa Powerful Suction

Easily remove dirt and pet hair from different types of floors.



Pet Hair



Pet Food



Crumbs

*Different suction modes are available in the Roborock App.

Figure 3.2: The powerful 8000 Pa suction system of the Q7 L5.

Dual Anti-Tangle System

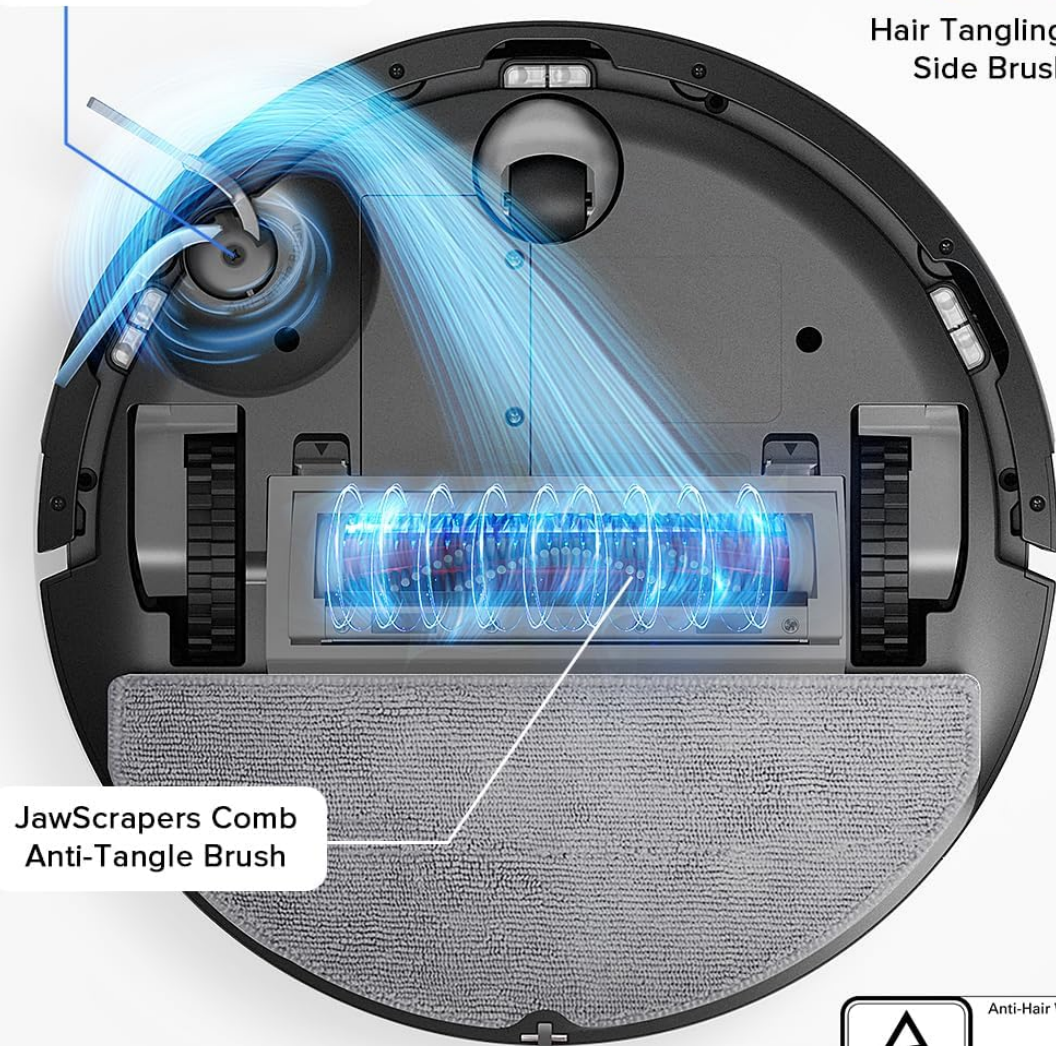
Efficiently collects hair and pet hair while reducing tangling.

Upgrade

Zero-Tangle Side Brush

0%

Hair Tangling for Side Brush



JawScrapers Comb
Anti-Tangle Brush



Figure 3.3: Detail of the Dual Anti-Tangle System.

Smart Navigation for Whole House Cleaning

PreciSense LiDAR system finds the most efficient way to clean throughout your home.

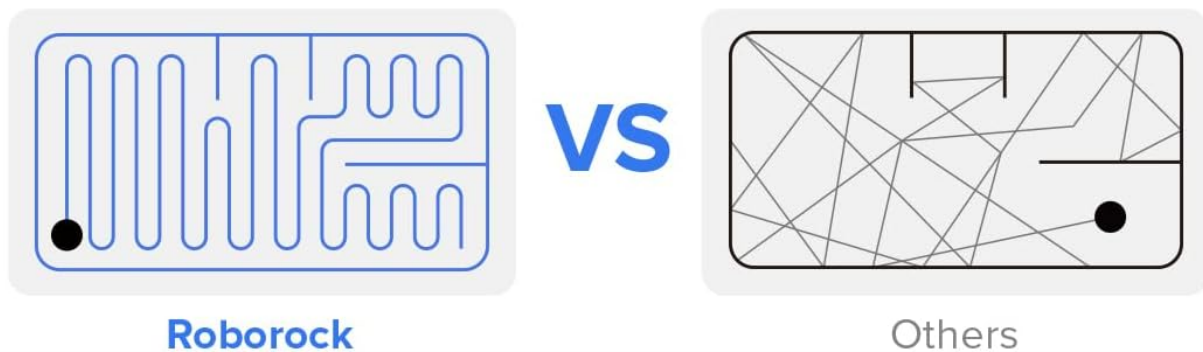


Figure 3.4: Smart Navigation for whole house cleaning.

Double Cleaning in One Go

Vacuum and mop at once to capture fine dirt missed by vacuuming, while consistent moisture removes stubborn stains.



Figure 3.5: Double cleaning in one go with vacuum and mop functions.

4. SETUP

4.1. Unboxing and Initial Placement

Carefully remove all components from the packaging. Place the charging dock against a wall on a hard, level surface, ensuring there are no obstacles within 0.5 meters to either side and 1.5 meters in front. Connect the power adapter to the charging dock and plug it into a power outlet.

4.2. Charging the Robot

Place the robot onto the charging dock. The power indicator will light up, indicating that the robot is charging. For first-time use, ensure the robot is fully charged before starting a cleaning cycle. A full charge takes approximately 3-4 hours.

4.3. Connecting to the Roborock App

Download the Roborock app from your mobile device's app store. Follow the in-app instructions to add your Q7 L5 robot. This typically involves connecting to the robot's Wi-Fi hotspot and then connecting the robot to your home 2.4G Wi-Fi network. The app provides comprehensive control and customization options.

All-in-One App Control

Let your robot vacuum get to work as you wish.

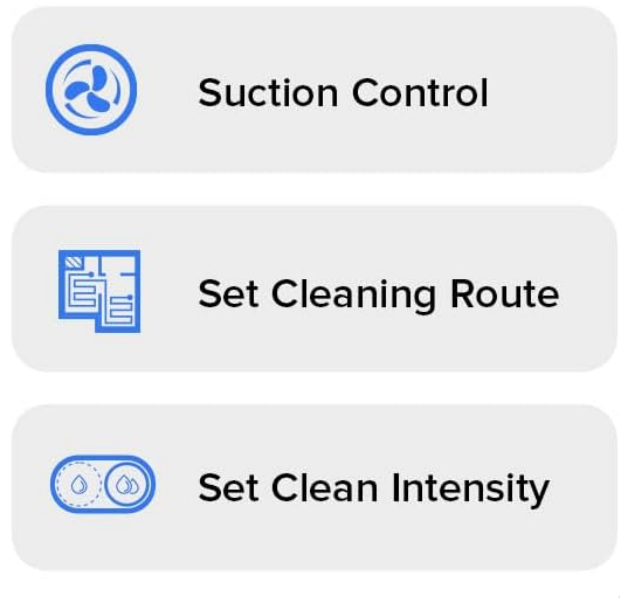
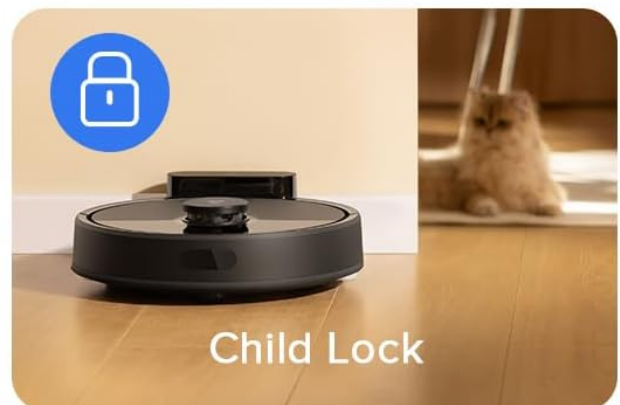


Figure 4.1: All-in-one app control for your robot vacuum.

5. OPERATING INSTRUCTIONS

5.1. Basic Operation

To start a cleaning cycle, press the power button on the robot or use the Roborock app. The robot will automatically map your home and begin cleaning. To pause or resume cleaning, press the power button again. To send the robot back to the charging dock, press the dock button.

5.2. Using the Roborock App

The Roborock app offers advanced control and customization:

- **Custom Cleaning:** Select specific rooms or areas to clean.
- **Schedule Cleaning:** Set daily or weekly cleaning schedules.
- **Suction Power Adjustment:** Choose from multiple suction levels (e.g., Silent, Balanced, Turbo, Max).
- **Water Flow Level:** Adjust the water flow for mopping based on floor type.
- **Carpet Boost Mode:** Automatically increases suction power when a carpet is detected.
- **Child Lock:** Prevents accidental starts by children or pets.

5.3. Setting No-Go Zones and Invisible Walls

Use the Roborock app to define areas the robot should avoid:

- **No-Go Zones:** Draw rectangular areas on the map that the robot will not enter. Ideal for pet bowls or delicate furniture.
- **Invisible Walls:** Draw virtual lines on the map to create barriers the robot will not cross. Useful for blocking off doorways or specific sections of a room.

Smart Suggestions for No-Go Zones

Easily set boundaries and designate areas as off-limits.

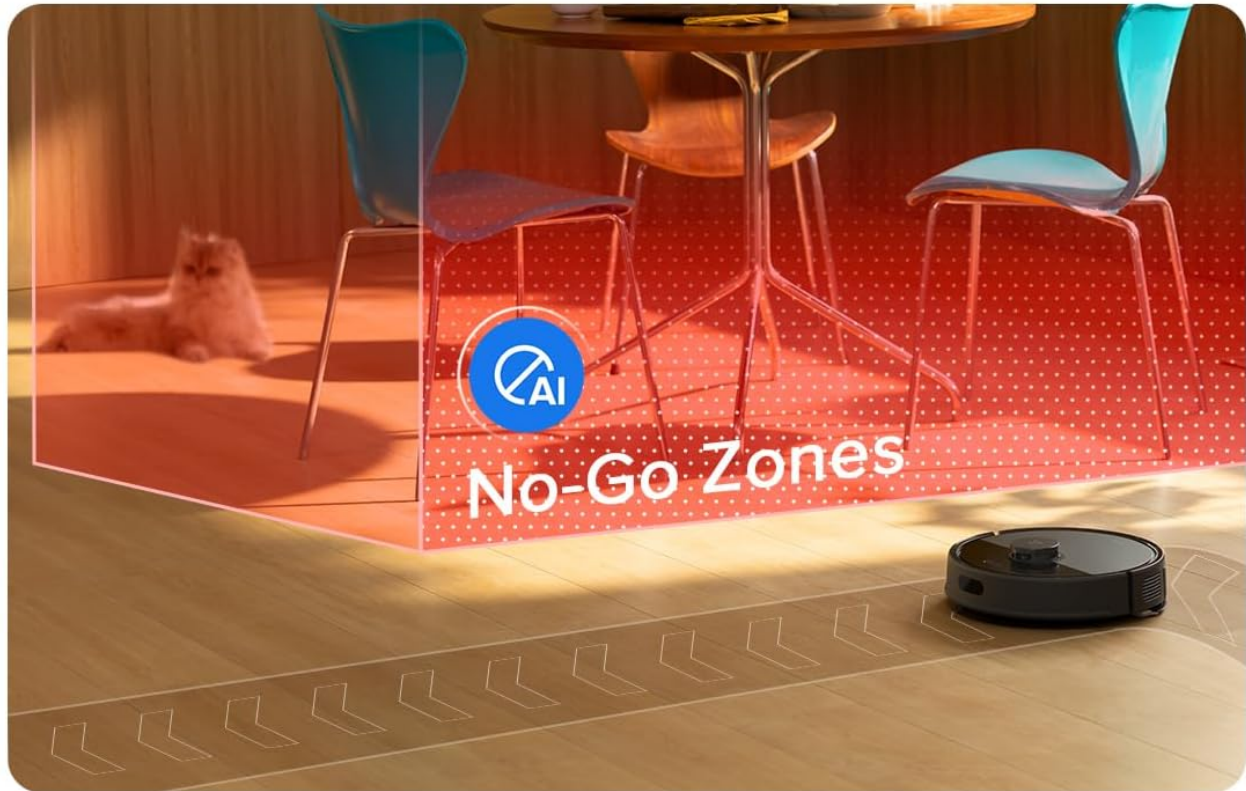


Figure 5.1: Smart Suggestions for No-Go Zones.

5.4. Multi-Level Mapping

The Q7 L5 supports saving up to 3 different floor maps. This feature is ideal for multi-story homes, allowing the robot to recognize its location and clean accordingly without re-mapping each time. Simply place the robot on the desired floor, and it will automatically load the corresponding map.

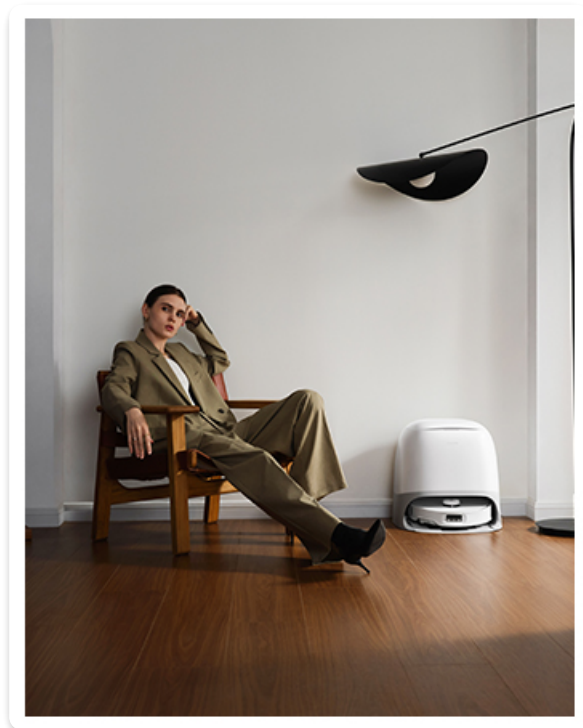


Figure 5.2: Multi-Level Mapping System.

6. MAINTENANCE

Regular maintenance ensures optimal performance and extends the lifespan of your roborock Q7 L5. Always turn off the robot and unplug it from the charging dock before performing any maintenance.

6.1. Cleaning the Dustbin and Filters

The 400ml dustbin should be emptied after each cleaning cycle, especially if you have pets. Open the robot's top cover, remove the dustbin, and empty its contents. The filter inside the dustbin should be cleaned regularly by tapping it against a trash can to remove debris. Wash the filter with water every two weeks and allow it to air dry completely before reinserting.

6.2. Cleaning the Brushes

The main brush and side brush should be inspected and cleaned weekly. Remove the main brush cover and lift out the main brush. Use the cleaning tool provided to remove tangled hair and debris. The side brush can be unscrewed and cleaned of any tangled hair. The Dual Anti-Tangle System is designed to minimize hair wrap, but periodic checks are still recommended.

Dual Anti-Tangle System

Efficiently collects hair and pet hair while reducing tangling.

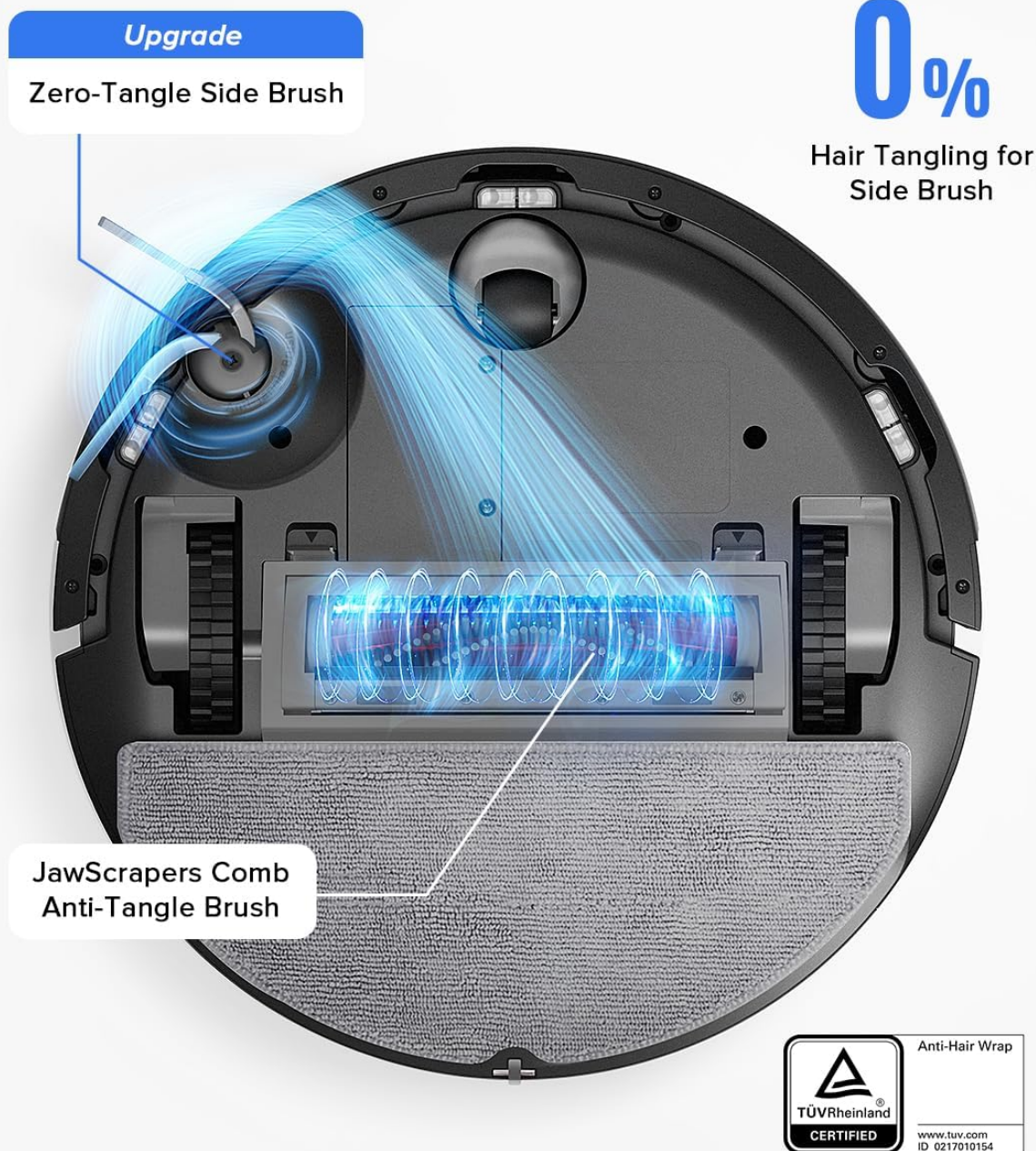


Figure 6.1: Inspecting and cleaning the Dual Anti-Tangle Brushes.

6.3. Cleaning Sensors and Charging Contacts

Wipe the cliff sensors (located on the bottom of the robot), wall sensor (on the side), and charging contacts (on the robot and charging dock) with a soft, dry cloth monthly. This ensures proper navigation and charging.

6.4. Mopping System Maintenance

After mopping, remove the mop pad and wash it thoroughly. The 270ml water tank should be emptied and rinsed to prevent mold or odor buildup. Allow the mop pad and water tank to air dry completely before

reattaching.

7. TROUBLESHOOTING

If you encounter issues with your roborock Q7 L5, refer to the following common problems and solutions:

Problem	Possible Cause	Solution
Robot does not turn on	Low battery; Power button not pressed correctly	Place robot on charging dock; Press and hold power button for 3 seconds.
Robot cannot charge	Charging contacts dirty; Charging dock not powered	Clean charging contacts on robot and dock; Ensure charging dock is plugged in.
Robot gets stuck frequently	Obstacles in path; No-go zones not set	Clear obstacles; Set No-Go Zones in the app for problem areas.
Poor cleaning performance	Dustbin full; Brushes tangled; Filter clogged	Empty dustbin; Clean main and side brushes; Clean or replace filter.
App connection issues	Incorrect Wi-Fi password; Router issues; Robot too far from router	Verify Wi-Fi password; Restart router; Move robot closer to router (supports 2.4G WiFi only).

7.1. Frequently Asked Questions (FAQ)

- **How effective is the Dual Anti-Tangle System?** The high-suction fan on Q7 L5 boasts a 95% hair pickup rate. All brushes have been tested and certified by TÜV Süd for anti-entanglement. The all-new Dual Anti-Tangle System eliminates hair tangles for good.
- **What type of water tank does Q7 L5 use?**Q7 L5 is equipped with an electronic water tank, which offers several water flow levels so you can adjust the mopping water volume to match your floor types and preferences. Note: The water tank and mop cloth mount are detachable.
- **How long does it take to charge the robot?**Roborock's smart auto top-up allows the robot to resume cleaning automatically at 80% battery charge after being interrupted for recharging — especially when cleaning larger homes (over 250 m²). In the charging process, it takes about 1 hour for every 20% increase in power and about 3 to 4 hours for a 20-100% increase.

8. SPECIFICATIONS

Feature	Specification
Brand	roborock
Model Name	roborock Q7 L5
Colour	Black
Product Dimensions	38.3L x 32.5W x 10H Centimetres
Item Weight	3.3 kg
Voltage	120 Volts

Feature	Specification
Noise Level	65 dB
Runtime	150 minutes
Battery Life	150 minutes
Battery Cell Composition	Lithium Ion
Suction Power	8,000 Pa HyperForce
Dustbin Capacity	400 ml
Water Tank Capacity	270 ml
Navigation Type	Precise LiDAR Navigation
Obstacle Crossing Ability	2cm
Compatible Models	Smartphones, Tablets, Smartwatches
Controller Type	App Control, Button Control
Surface Recommendation	Carpet, Marble, Wood, Tile

9. WARRANTY AND SUPPORT

9.1. Warranty Information

The roborock Q7 L5 Robot Vacuum and Mop Cleaner comes with a manufacturer's warranty. Please refer to the warranty card included in your product packaging or visit the official roborock website for detailed warranty terms and conditions. Keep your proof of purchase for warranty claims.

9.2. Customer Support

For technical assistance, troubleshooting beyond this manual, or warranty inquiries, please contact roborock customer support. Contact information can typically be found on the official roborock website or within the Roborock app.

Online Support: Visit the official roborock website for FAQs, video tutorials, and contact forms.

App Support: The Roborock app often includes a support section with direct contact options.