

DieSeRC 29d82218-ba2d-4016-aca2-d1f9762de632

DieSeRC Wireless Roller Shutter Remote Control Switch User Manual

Model: 29d82218-ba2d-4016-aca2-d1f9762de632

Brand: DieseRC

1. INTRODUCTION

This manual provides comprehensive instructions for the installation, operation, and programming of your DieseRC Wireless Roller Shutter Remote Control Switch. This device is designed to wirelessly control AC motors, enabling forward, reverse, and stop functions for applications such as garage doors, electric gates, and roller shutters. Please read this manual carefully before use to ensure proper functionality and safety.

2. PACKAGE CONTENTS

- 1 x Relay Receiver Board
- 2 x Transmitters (battery included)
- 1 x Product Manual

3. SPECIFICATIONS

Feature	Specification
Receiver Working Voltage	AC 90V~250V
Quiescent Current	<10 mA
Max. Current	3A (Inductive Load), 10A (Resistive Load)
RF Frequency	433MHz
Operating Temperature	-30°C to +80°C
Receiving Sensitivity	>97 dBm

Feature	Specification
Number of Storable Remotes	Up to 20
Coding Support	1527 Learning-Code
RF Operating Mode	ASK Superheterodyne Wireless Reception
Reception Range	Approx. 20 ~ 50 meters (open area)
Operating Modes	Momentary / Toggle / Latched Mode
Transmitter Battery	2 x CR2016 (included)
Compatible Devices	Garage door, electric curtain, electric gate, roller door

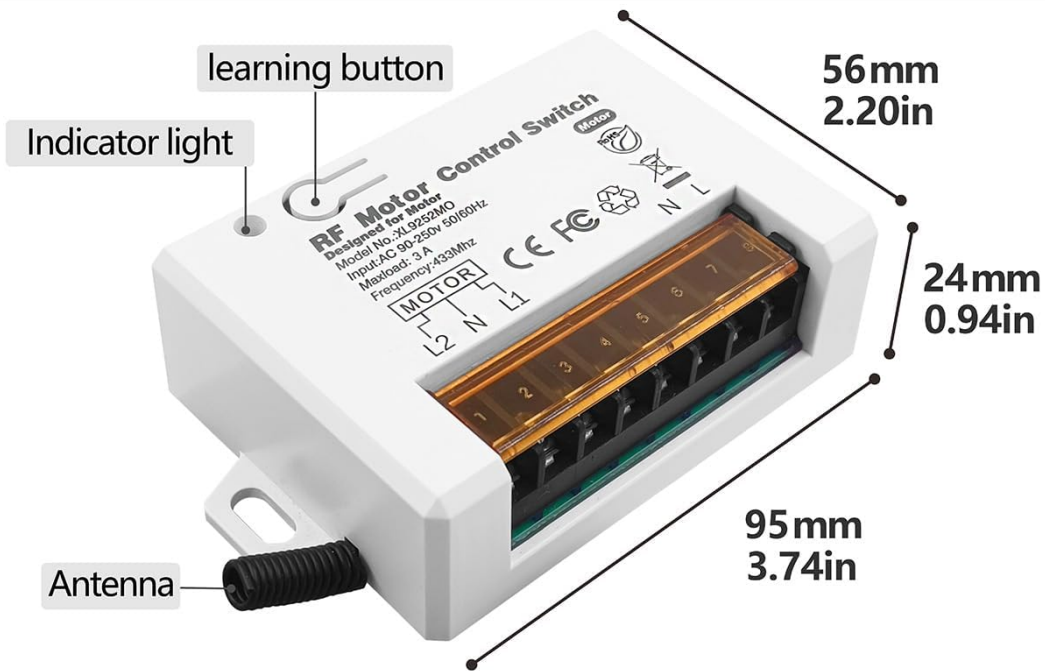
4. SETUP

4.1 Safety Precautions

- Ensure power is disconnected before any wiring.
- Wiring should be performed by a qualified electrician if you are unsure.
- Verify correct polarity (Live, Neutral) to avoid damage or short circuits.

4.2 Wiring the Receiver

Connect the receiver to your AC motor and power supply according to the diagram below. The receiver supports AC 90V-250V input. Ensure secure connections for all wires.



Receiver

Voltage: AC 90-250V
50/60Hz

Maxload: 3A

Frequency: 433Mhz

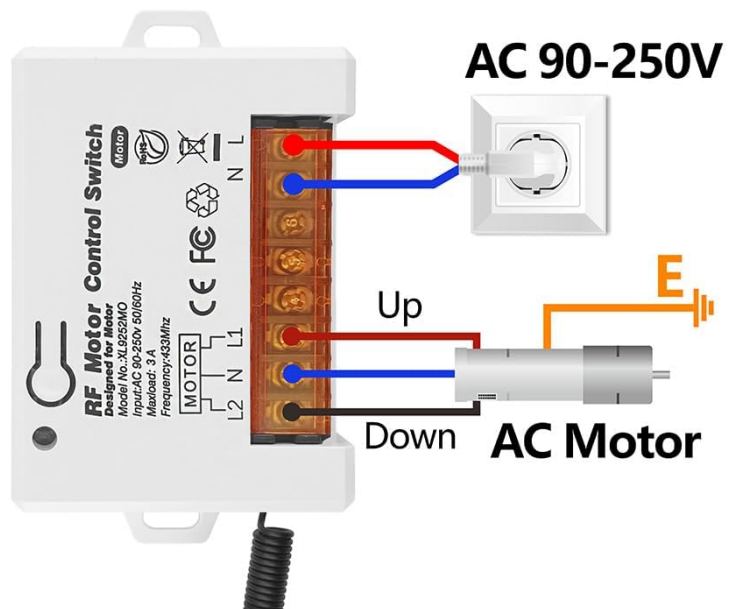
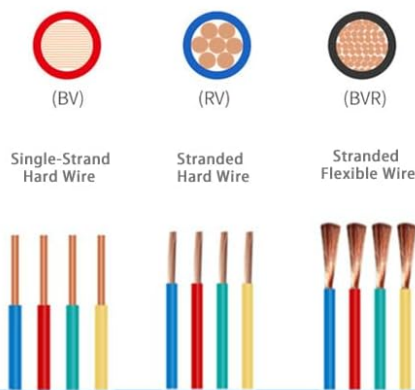


Image: Receiver dimensions and wiring diagram. Note the 'Up' and 'Down' motor connections and AC 90-250V power input. The receiver features large screw ports for easy installation and metal clips for secure wiring. A transparent flip cover allows for circuit adjustment.

Simple and convenient installation



Fits a variety of cables



REGULAR SCREW PORT

- Big screw port easy to install.
- Metal clips for easy wiring.
- Transparent flip cover for easy circuit adjustment.



Image: Detailed view of the receiver's screw terminals and cable compatibility.

4.3 Initial Power-Up

After wiring, apply power to the receiver. The indicator light on the receiver will illuminate, indicating it is ready for operation or programming.

4.4 Product Overview Video

Your browser does not support the video tag.

Video: This video provides a visual overview of the DieseRC 2201COM receiver and KT03 remote control, highlighting their design and features.

5. OPERATING MODES

The DieseRC remote control switch supports three main operating modes: Momentary, Toggle, and Latched. All products are set to Toggle mode before shipment. If you wish to change the operating mode, you must first reset the receiver (see Section 6.2).

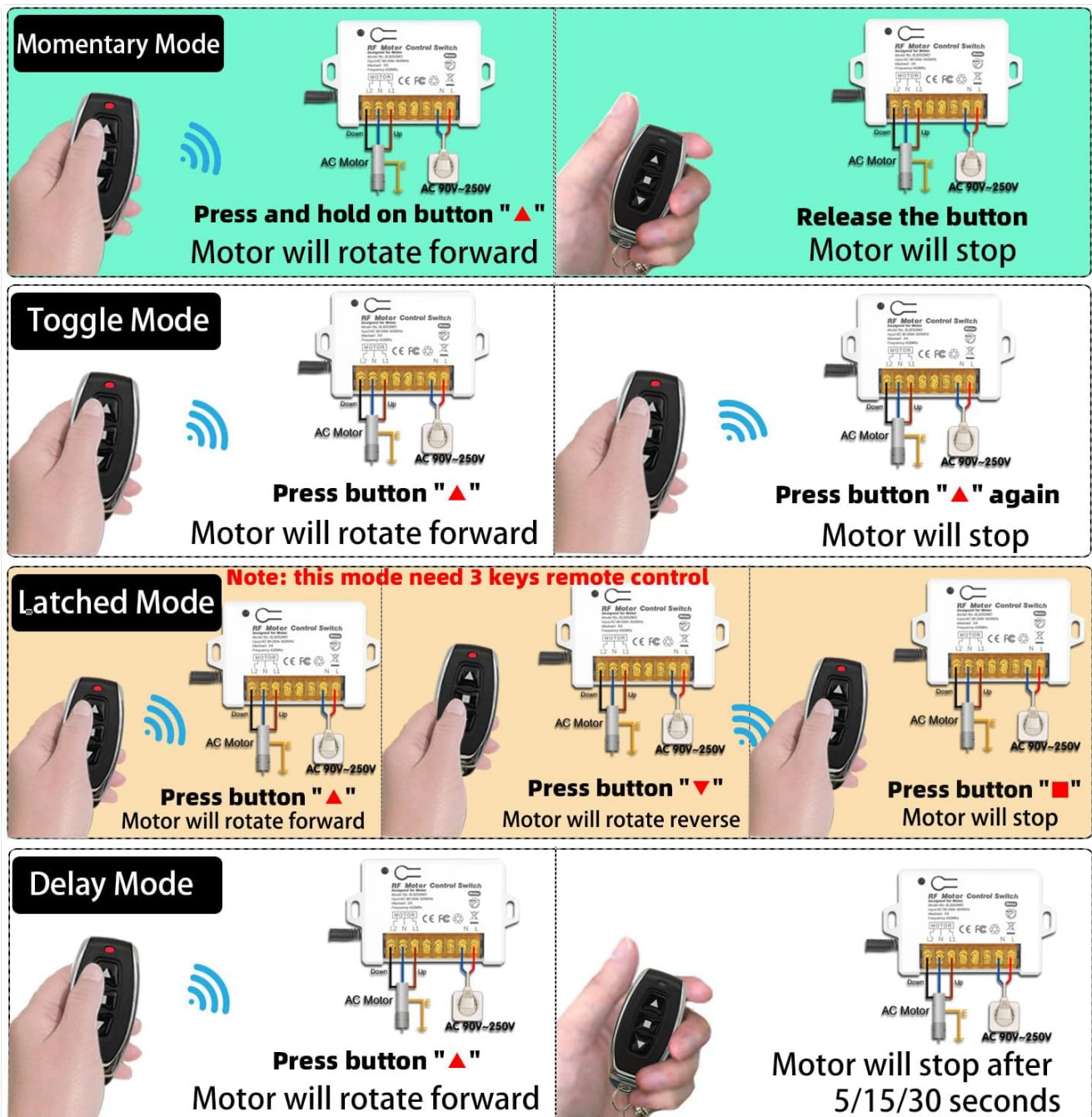


Image: Visual representation of Momentary, Toggle, Latched, and Delay operating modes.

5.1 Momentary Mode

- Press and hold the "▲" button: The motor rotates forward.
- Release the button: The motor stops.

5.2 Toggle Mode

- Press the "▲" button once: The motor rotates forward.
- Press the "▲" button again: The motor stops.

5.3 Latched Mode

- Press the "▲" button: The motor rotates forward.
- Press the "▼" button: The motor rotates backward.
- Press the "■" button: The motor stops.

5.4 Application Examples

Products can be used to remote control garage doors



Image: Example of the remote control switch used for a garage door.

Your browser does not support the video tag.

Video: This video demonstrates various applications of the DieseRC Wireless Roller Shutter Remote Control Switch, showcasing its functionality in controlling different types of AC motors.

6. PROGRAMMING REMOTE CONTROLS

The receiver can store up to 20 transmitters. Follow these steps to program your remote control to the desired operating mode.

How to get the signal --Set up

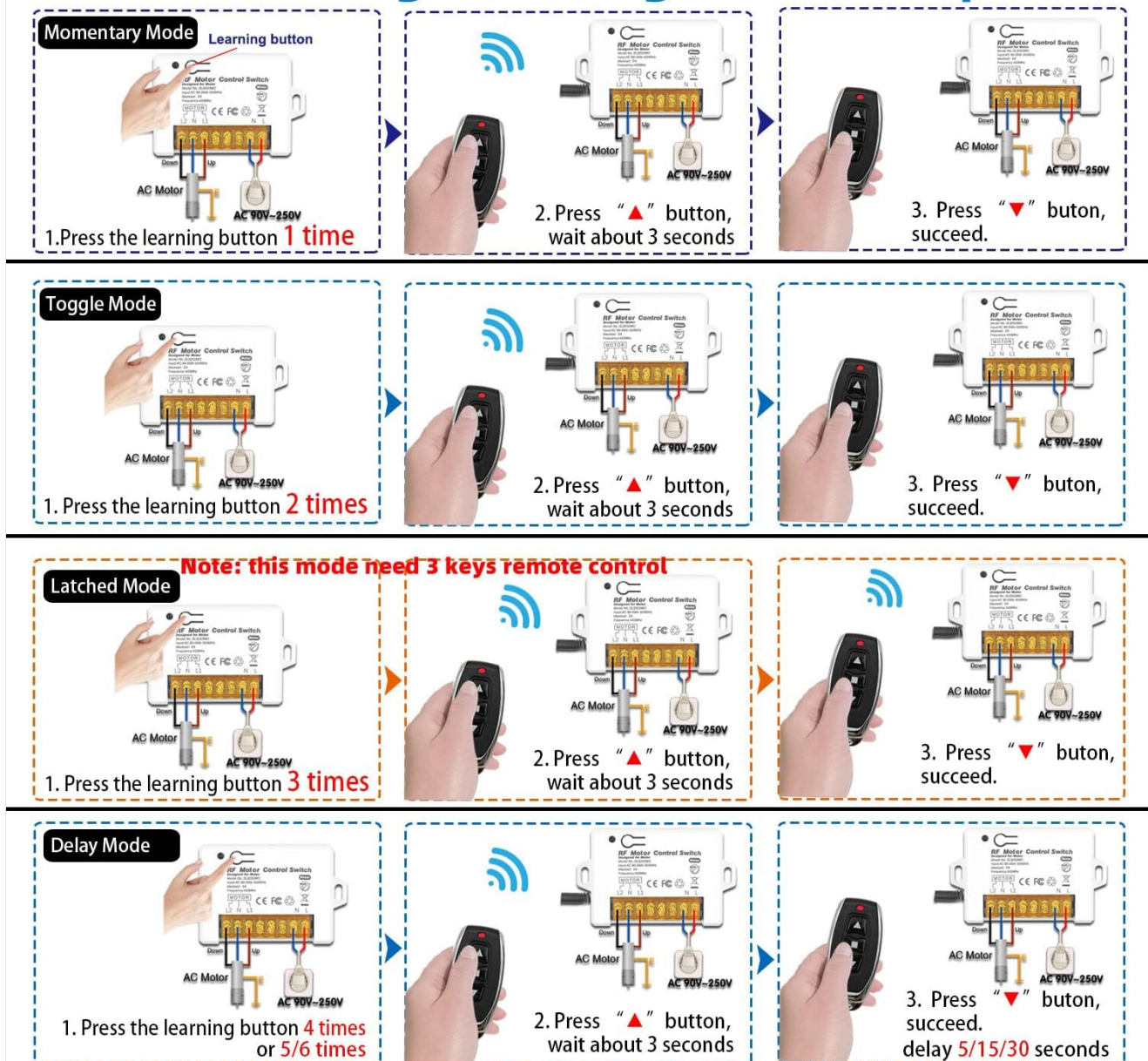


Image: Step-by-step programming instructions for different modes.

6.1 Learning a Remote Control

1. Press the learning button on the receiver:

- Press **1 time** for Momentary Mode.
- Press **2 times** for Toggle Mode.
- Press **3 times** for Latched Mode.

Wait 3 seconds after pressing.

2. Press the "▲" button on your remote control. Wait 3 seconds.

3. Press the "▼" button on your remote control. The programming is successful.

Note: For Latched Mode, the remote control requires 3 keys (Forward, Reverse, Stop).

6.2 Resetting the Receiver

To clear all programmed remote controls from the receiver's memory:

- Press the learning button on the receiver **8 times**.

Important: After resetting, all previously programmed remote controls will no longer work and must be re-programmed.

6.3 Programming Demonstration Video

Your browser does not support the video tag.

Video: A step-by-step video guide on how to program the DieseRC 2201COM receiver, covering the different operating modes and remote control pairing.

7. MAINTENANCE

7.1 Transmitter Battery Replacement

The remote control transmitters use 2 x CR2016 batteries. If the remote's range decreases or it becomes unresponsive, replace the batteries. Refer to the transmitter image for visual guidance.

Transmitter

Size:

28 *59 *11 mm

1.10 *2.32 *0.43 in



Image: DieseRC remote control transmitter.

7.2 Cleaning

Wipe the receiver and transmitters with a dry, soft cloth. Do not use abrasive cleaners or solvents.

7.3 Environmental Conditions

Avoid exposing the device to extreme temperatures, high humidity, or direct sunlight. Ensure the receiver is installed in a location with adequate ventilation.

8. TROUBLESHOOTING

- **Remote control not responding:**

- Check the battery in the transmitter. Replace if necessary.
- Ensure the receiver has power.
- If the receiver was recently reset, re-program the remote control (see Section 6.1).
- Ensure the remote is within the effective operating range (20-50 meters).

- **Motor not moving:**

- Verify all wiring connections are secure and correct (refer to Section 4.2).
- Check the power supply to the receiver and motor.
- Ensure the motor itself is functioning correctly.

- **Interference:**

- While multiple remote control sets can be used in the same area without interference (except in Momentary mode), strong local RF interference might affect performance. Try relocating the receiver if possible.

9. WARRANTY AND SUPPORT

DieseRC products are manufactured to high-quality standards. For specific warranty information, please refer to the product packaging or contact your retailer. If you encounter any issues or require technical assistance, please reach out to DieseRC customer support through the vendor's contact information provided at the point of purchase.