

VEVOR WL-U5601

VEVOR Portable Shampoo Bowl with Electric Pump Instruction Manual

Model: WL-U5601

1. INTRODUCTION AND OVERVIEW

This manual provides detailed instructions for the assembly, operation, and maintenance of your VEVOR Portable Shampoo Bowl with Electric Pump. Designed for both commercial and home use, this shampoo bowl offers a stable, comfortable, and convenient solution for hair washing.

Key Features:

- **Stable Structure:** Constructed from high-strength PP material with a stainless steel frame and a star-shaped base for robust support.
- **Comfortable Use:** Features an adjustable height (40.55-55.12 inches / 103-140 cm) and angle (up to 270° forward and backward) to accommodate various user positions. Rolled edges enhance neck comfort.
- **Convenient Operation:** Dual-bin design with a foot pedal switch for water pump control. Clean water is supplied via the showerhead, and dirty water drains into a separate waste bin through a non-collapsible corrugated pipe.
- **Lightweight & Portable:** Weighs approximately 6.8 kg (14.99 lbs) and includes wheels for easy movement. Disassembles for space-saving storage.
- **Wide Application:** Suitable for beauty salons, barbershops, home use, and spa centers.

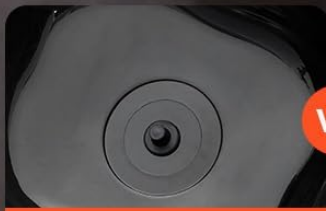
2. PRODUCT COMPONENTS

The VEVOR Portable Shampoo Bowl includes the following main components:

- Shampoo Bowl (PP material)
- Stainless Steel Support Pole
- H-shaped Base with Casters
- Dual Water Buckets (clean water and waste water)
- Electric Water Pump
- Foot Pedal Switch
- Showerhead with Hose
- Drain Hose (non-collapsible corrugated pipe)

Why Choose Ours Shampoo Bowl

Durable and Sturdy Material



PP Material

VS



Low-Quality Plastic



Stainless Steel Frame

VS



Easily Breakable Frame



H-Shaped Base

VS



Tipping-Prone Base

Figure 2.1: Complete VEVOR Portable Shampoo Bowl with Electric Pump.

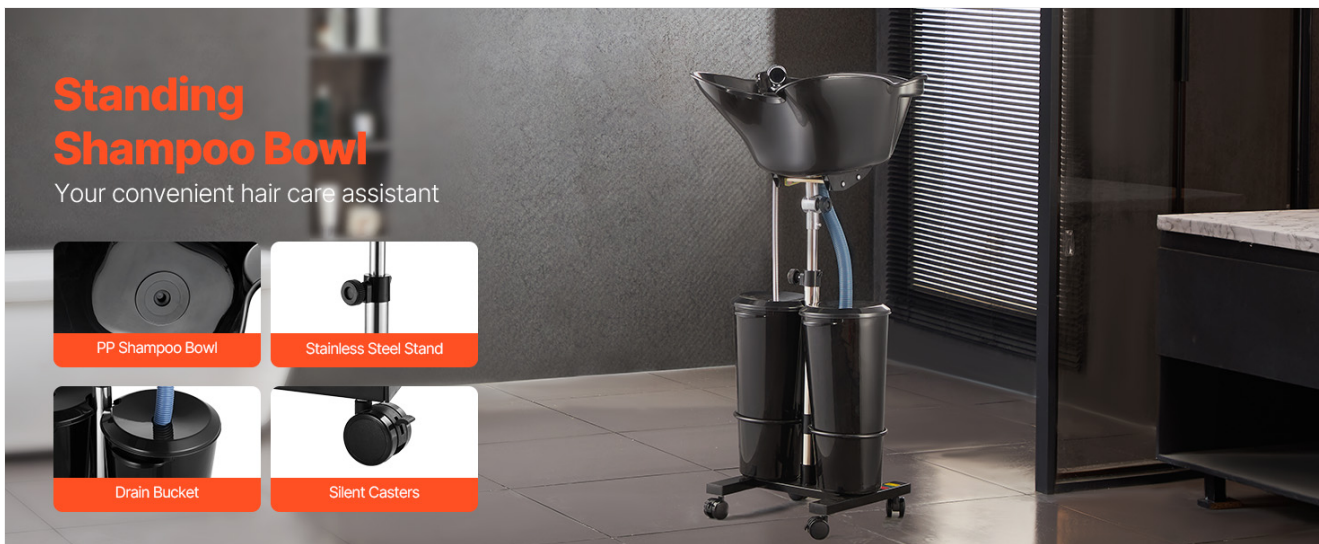


Figure 2.2: Detailed view of key components: dual buckets, foot switch, drain pipe, and electric pump.

3. SETUP AND ASSEMBLY

Follow these steps to assemble your VEVOR Portable Shampoo Bowl. Refer to the provided installation videos for visual guidance.

Assembly Steps:

1. **Assemble the Base:** Attach the four casters to the H-shaped base using the provided screws and wrench. Ensure they are securely tightened.
2. **Install Support Pole:** Insert the adjustable stainless steel support pole into the central opening of the H-shaped base. Secure it with the locking mechanism.
3. **Attach Bucket Rings:** Slide the two bucket support rings onto the support pole and secure them at the desired height using the adjustment knobs.
4. **Prepare the Shampoo Bowl:** Install the drain assembly into the shampoo bowl. Ensure all gaskets are correctly seated to prevent leaks.
5. **Mount the Bowl:** Attach the shampoo bowl to the top of the support pole. Secure it using the provided screws and adjustment knobs, ensuring it can be tilted and adjusted.
6. **Connect Drain Hose:** Connect the corrugated drain hose to the drain assembly of the shampoo bowl and secure it with the clamp.
7. **Place Buckets:** Position the two water buckets into the support rings on the base.
8. **Connect Pump and Showerhead:** Connect the electric water pump to the clean water bucket and attach the showerhead hose to the pump. Place the showerhead in its designated holder on the bowl.
9. **Connect Power and Foot Switch:** Connect the power adapter to the control box, then connect the foot pedal switch and the pump to the control box. Plug the power adapter into a suitable electrical outlet.

Your browser does not support the video tag.

Video 3.1: Shampoo Bowl Installation Tutorial. This video demonstrates the step-by-step assembly process for the portable shampoo bowl.

Your browser does not support the video tag.

Video 3.2: Portable Shampoo Bowl with 2 Buckets. This video provides an overview of the dual bucket system and its assembly.

4. OPERATING INSTRUCTIONS

Once assembled, the VEVOR Portable Shampoo Bowl is ready for use. Follow these instructions for optimal performance.

Basic Operation:

1. **Fill Clean Water Bucket:** Ensure the clean water bucket is filled with water of the desired temperature.
2. **Adjust Height and Angle:** Loosen the adjustment knobs on the support pole to set the shampoo bowl to a comfortable height and angle for the user. Tighten the knobs securely once adjusted.
3. **Position User:** Guide the user to comfortably position their head over the neck rest of the shampoo bowl.
4. **Activate Water Pump:** Step on the foot pedal switch to activate the electric water pump, which will deliver water through the showerhead.
5. **Wash Hair:** Use the showerhead to wet, shampoo, and rinse the user's hair. Ensure the drain hose is properly directed into the waste water bucket.
6. **Monitor Water Levels:** Periodically check the clean water and waste water buckets. Refill the clean water bucket and empty the waste water bucket as needed.



Figure 4.1: Adjusting the height and angle for comfortable use.

Your browser does not support the video tag.

Video 4.2: Portable Shampoo Bowl in operation, demonstrating water flow and adjustability.

5. MAINTENANCE

Proper maintenance ensures the longevity and hygiene of your shampoo bowl.

- **Cleaning:** Wipe the PP (polypropylene) and stainless steel parts with a damp cloth using mild soap and water. Avoid harsh chemicals that may damage the materials. Rinse and dry thoroughly after each use.
- **Electrical Components:** Always unplug the unit before cleaning any electrical parts. Do not submerge the electrical components (pump, foot switch, power adapter) in water.
- **Drain Maintenance:** Clean the drain regularly to prevent clogs from hair and debris.
- **Storage:** Store the unit in a dry place when not in use. For long-term storage, disassemble the unit to save space.

6. TROUBLESHOOTING

If you encounter issues with your shampoo bowl, refer to the following common troubleshooting tips:

- **No Water Flow:**

- Check if the power adapter is securely plugged into an outlet and the control box.
- Ensure the pump is correctly connected to the control box and the clean water bucket.
- Verify that the clean water bucket contains sufficient water.
- Check the foot pedal switch for proper connection and function.
- Inspect the pump and hoses for any blockages or kinks.

- **Water Leakage:**

- Ensure all connections, especially the drain assembly and hose clamps, are tight and properly sealed.
- Check for any cracks or damage to the shampoo bowl or hoses.

- **Unstable Bowl:**

- Verify that the support pole is firmly secured to the base and the shampoo bowl.
- Ensure all adjustment knobs are tightened after setting the desired height and angle.

If the issue persists, please contact VEVOR customer support for further assistance.

7. SPECIFICATIONS

Feature	Detail
Brand	VEVOR
Model Number	WL-U5601
Color	Black
Material	PP, Q195, Stainless Steel
Product Dimensions (L x W x H)	18.9"D x 19.69"W x 40.55"H
Adjustable Height Range	40.55-55.12 inches / 103-140 cm
Adjustable Angle	Up to 270° forward and backward
Item Weight	14.99 lbs / 6.8 kg
Installation Type	Freestanding
Drain Type	Lift and Turn
UPC	197988653899

8. WARRANTY AND SUPPORT

For warranty information, technical support, or any inquiries regarding your VEVOR Portable Shampoo Bowl, please refer to the warranty card included with your product or visit the official VEVOR website. Ensure you have your model number (WL-U5601) and purchase details available when contacting support.

