



Manuals.plus /

› FEPPPO /

› FEPPPO Steam Mop with Detachable Handheld Steam Cleaner (Model: FP-MOP-FU01) Instruction Manual

## FEPPPO FP-MOP-FU01

# FEPPPO Steam Mop with Detachable Handheld Steam Cleaner (Model: FP-MOP-FU01) Instruction Manual

## 1. PRODUCT OVERVIEW

---

The FEPPPO Steam Mop with Detachable Handheld Steam Cleaner is a versatile 2-in-1 cleaning device designed for various surfaces in your home. It utilizes high-temperature steam for effective cleaning without harsh chemicals.



Figure 1: FEPPO Steam Mop and Handheld Steam Cleaner with included accessories.

# 2 DEVICES IN 1

## Steam Mop



## Steam Cleaner

Figure 2: The FEPPo Steam Mop transforms into a handheld steam cleaner for versatile cleaning.

## 2. PACKAGE CONTENTS

Verify that all components are present in your package:

- Handheld Steam Mop Unit (1)
- Mop Extension Tube (2)
- Mop Head (1)
- Washable Microfiber Pads (2)
- Window Glass Squeegee Cleaner (1)
- Ironing Cloth (1)
- Bugle Cloth Brush (1)
- Nylon Brush (2)
- Metal Brush (1)
- Curved Extension Tip (1)

- Long Nozzle (1)
- Storage Box (1)

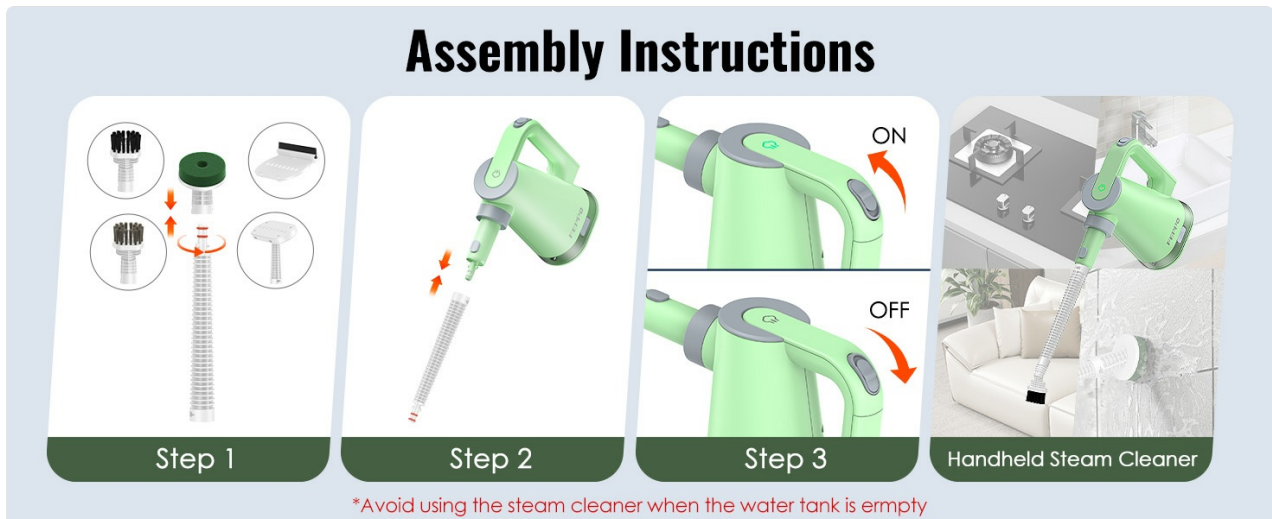


Figure 3: All components included in the FEPP0 Steam Mop package.

### 3. SETUP INSTRUCTIONS

#### 3.1 Assembling the Steam Mop

1. Connect the mop extension tubes to the handheld unit.
2. Attach the mop head to the end of the extension tube.
3. Secure a washable microfiber pad to the mop head.
4. Ensure the water tank is securely fastened to the main unit.

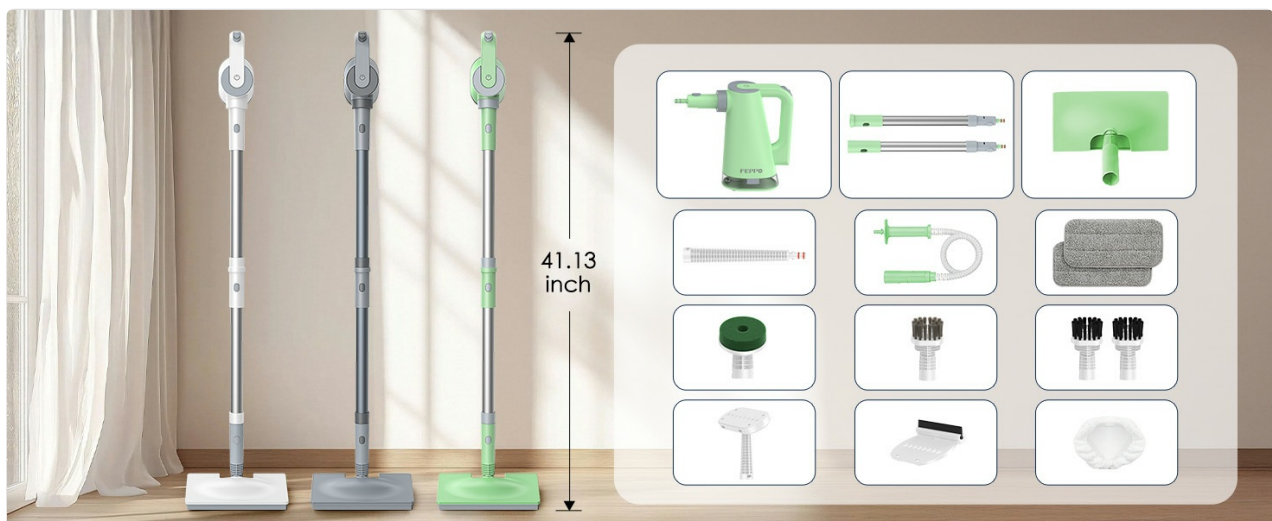
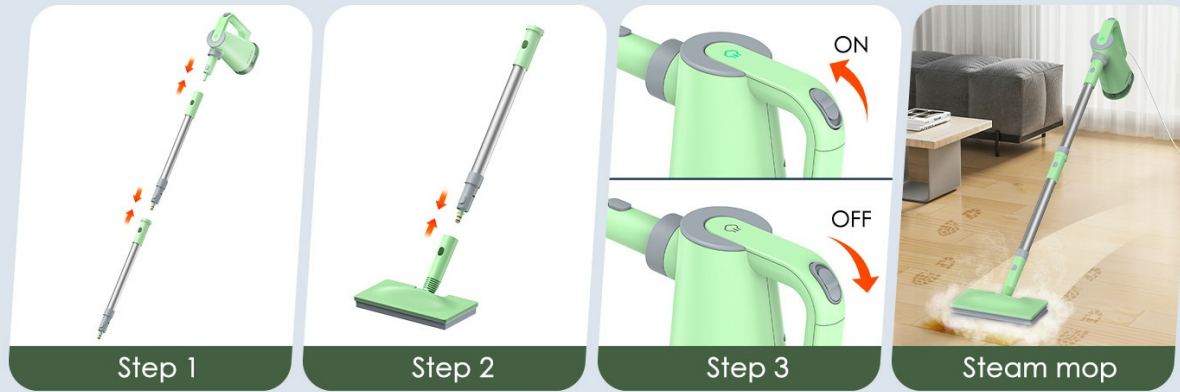


Figure 4: Visual guide for steam mop assembly.

#### 3.2 Assembling the Handheld Steam Cleaner

1. Attach the brush connector or threaded pipe to the handheld unit.
2. Select the desired cleaning attachment (e.g., nylon brush, metal brush, window squeegee, ironing brush, scouring brush) and secure it to the brush connector or threaded pipe.
3. Ensure the water tank is securely fastened to the main unit.

## Assembly Instructions



\*Avoid using the steam cleaner when the water tank is empty

Figure 5: Visual guide for handheld steam cleaner assembly.

### 3.3 Filling the Water Tank

1. Detach the water tank from the main unit.
2. Open the water tank cap.
3. Fill the tank with clean water. Do not add cleaning agents or chemicals.
4. Close the cap securely and reattach the water tank to the main unit, ensuring both sides are fastened.



Figure 6: The 370ml detachable water tank for easy refilling.

### 3.4 Installation Guide Video

Video 1: Official FEPP0 Steam Mop Installation Guide. This video demonstrates the assembly process for both the steam mop and handheld cleaner configurations.

## 4. OPERATING INSTRUCTIONS

### 4.1 Powering On and Preheating

1. Plug the power cord into a suitable electrical outlet. The 16.4ft power cord provides extended reach.
2. Press the power switch to turn on the device. The indicator light will illuminate.
3. Allow approximately 10-15 seconds for the device to preheat. The indicator light will change to green when heating is complete and the device is ready to produce steam.

### 4.2 Steam Mop Usage

Once preheated, press and hold the steam trigger to release steam. Move the mop head across sealed hard floors (hardwood, tile, grout, vinyl, marble, laminate) to clean and sanitize.



Figure 7: Using the FEPPO Steam Mop for floor cleaning.

## WORKS ON ALL TYPES OF FLOORS

Gentle Steam, Tough on Dirt for All Sealed Hard Floor

<b>230°F</b> Deep Cleaning	<b>99.9%</b> Stains Removal	<b>0</b> Chemical Free
-------------------------------	--------------------------------	---------------------------

A diagram illustrating the versatility of the steam mop. It shows a stack of different floor materials: Stone, Vinyl, Tile, Laminate, Marble, and Hardwood. A green steam mop head is shown cleaning the top surface, with steam rising from it. Labels with arrows point to each floor type.

Figure 8: The steam mop is suitable for cleaning various sealed hard floor types.

### 4.3 Handheld Steam Cleaner Usage

For detailed cleaning, detach the handheld unit and attach the appropriate accessory. Press and hold the steam trigger to release steam onto the target surface.

- **Nylon/Metal Brushes:** Ideal for scrubbing tough grime on kitchen stoves, grout, and bathroom tiles.
- **Window Squeegee:** For streak-free cleaning of windows, mirrors, and shower doors.
- **Ironing Brush/Cloth:** For steaming wrinkles out of garments and refreshing fabrics.
- **Curved Extension Tip/Long Nozzle:** For reaching tight spaces and crevices.

# HANDHELD STEAM CLEANER

1 Device Cleans Floors, Kitchens, Toilets, Windows, Furniture and More.

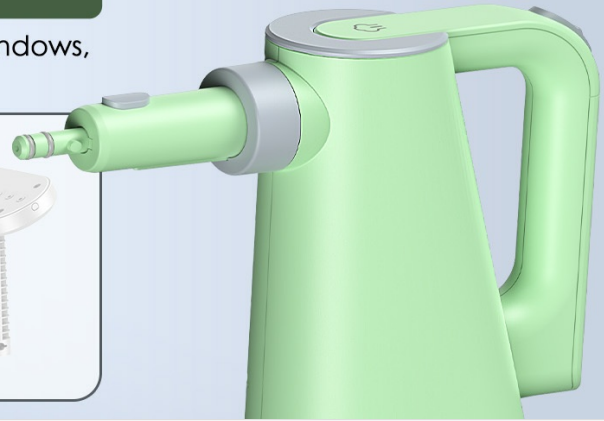
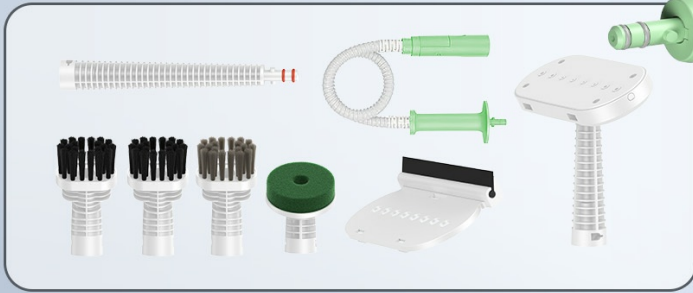


Figure 9: The handheld unit with its multi-purpose attachments.

## KITCHEN



Figure 10: Handheld steam cleaner in action in the kitchen.

## BATHROOM



Figure 11: Handheld steam cleaner in action in the bathroom.

### 4.4 Safety Precautions

- Do not use the steam mop on carpeted surfaces.
- Only use water in the tank; do not add cleaning agents or chemicals.
- Ensure the brass nozzle piece is always present when attaching accessories.

- Avoid direct contact with the hot pole or steam outlet to prevent burns.
- Do not point the steam outlet at people, pets, or plants.

Video 2: FEPP0 Steam Mop Precautions & Safety Tips. This video highlights important safety guidelines for using the device.

## 5. MAINTENANCE

---

### 5.1 Emptying the Water Tank

After each use, always empty any remaining water from the tank. This helps prevent mineral buildup and prolongs the life of the device.

### 5.2 Cleaning Microfiber Pads

The included microfiber pads are machine washable. Remove them from the mop head after use and wash according to fabric care instructions. Ensure they are completely dry before reattaching or storing.



## 2 REPLACEMENT MOP PADS

Long-Lasting, Machine-Washable,  
and Reusable for Easy Cleaning

Figure 12: The microfiber pads are machine washable for easy maintenance.

## 6. TROUBLESHOOTING

---

Refer to the table below for common issues and their solutions:

Issue	Possible Cause	Solution
The indicator is normal, but the water pump is working loudly.	The water tank is short of water and the pump is empty.	Add enough water to the water tank.
The indicator shows that the heating element is working normally, and the water pump is not working.	The water supply pipe is blocked.	Clean the tank accessories.
The indicator shows that the heating element is working normally, and the water pump is not working.	Enter into water protection state.	After the water tank is added, the switch is reset.
The indicator is blinking red, and the heating element does not heat up.	The fuse is burned or the fuse welding point is off welding.	Replace the fuse.
The indicator is green, the heating element is not heated, and the steam is not discharged.	The temperature controller is failed or the temperature controller welding point is off welding.	Replace the thermostat.
The host can not start, the indicator is not bright.	No power on or power switch is on.	Check that the power plug is inserted and the power switch is on.
Water tank leaks.	The water tank is not sealed properly.	Check that the water tank is installed correctly.
No steam comes out of the bottom of the mop or steam comes out of the side or top of the mop.	The mop internal connection tube falls off.	Unscrew the mop and re-insert the internal connection tube to the mop.

## 7. SPECIFICATIONS

- **Brand:** FEPP0
- **Model Name:** FP-MOP-FU01
- **Power Source:** Electric
- **Voltage:** 110 Volts (AC)
- **Item Weight:** 7.3 pounds (3.32 Kilograms)
- **Tank Volume:** 370 Milliliters (approx. 13 oz)
- **Maximum Temperature:** 230 Degrees Fahrenheit
- **Special Feature:** 2-in-1 Steam Mop and Handheld Steam Cleaner
- **Surface Recommendation:** Floor (sealed hardwood, tile, grout, vinyl, marble, laminate)
- **Power Cord Length:** 16.4 ft

## 8. WARRANTY & SUPPORT

---

FEPPPO is committed to providing high-quality products and services. For any problems or inquiries, please contact customer service through Amazon as a priority to receive support and coverage.

