

KBDcraft Lilith Q 75%

KBDcraft 02Lilith 75% Ergonomic Mechanical Keyboard User Manual

Model: Lilith Q 75%

1. INTRODUCTION

Thank you for choosing the KBDcraft 02Lilith 75% Ergonomic Mechanical Keyboard. This manual provides detailed instructions for assembling, operating, maintaining, and troubleshooting your new keyboard. Please read this manual thoroughly before use to ensure proper functionality and longevity of your device.

Package Contents:

- 75% Core Set (Keyboard PCB and Plate)
- Brick Case Pack (Lego-compatible case components)
- User Manual (this document)
- USB Cable (for connectivity)
- Keycap Puller (for switch and keycap removal)

2. SAFETY INFORMATION

- Keep the keyboard away from liquids and excessive moisture.
- Avoid exposing the keyboard to extreme temperatures.
- Do not attempt to disassemble or repair the keyboard beyond the instructions provided in this manual. Unauthorized repairs may void your warranty.
- Use only the provided USB cable or a compatible replacement.
- Keep small parts, such as switches and keycaps, out of reach of children to prevent choking hazards.

3. SETUP

3.1. Case Assembly

The KBDcraft 02Lilith features a unique brick-built case design. Follow these steps to assemble the keyboard case:

1. Unpack all components from the Brick Case Pack.
2. Carefully connect the brick pieces according to the included assembly diagram to form the base and top frame of the keyboard case. The case is designed with a 5.5-degree ergonomic tilt.
3. Ensure all connections are secure to provide a stable foundation for the internal components.



Image: Step-by-step assembly of the brick-built keyboard case, showing individual components being connected to form the keyboard's housing.

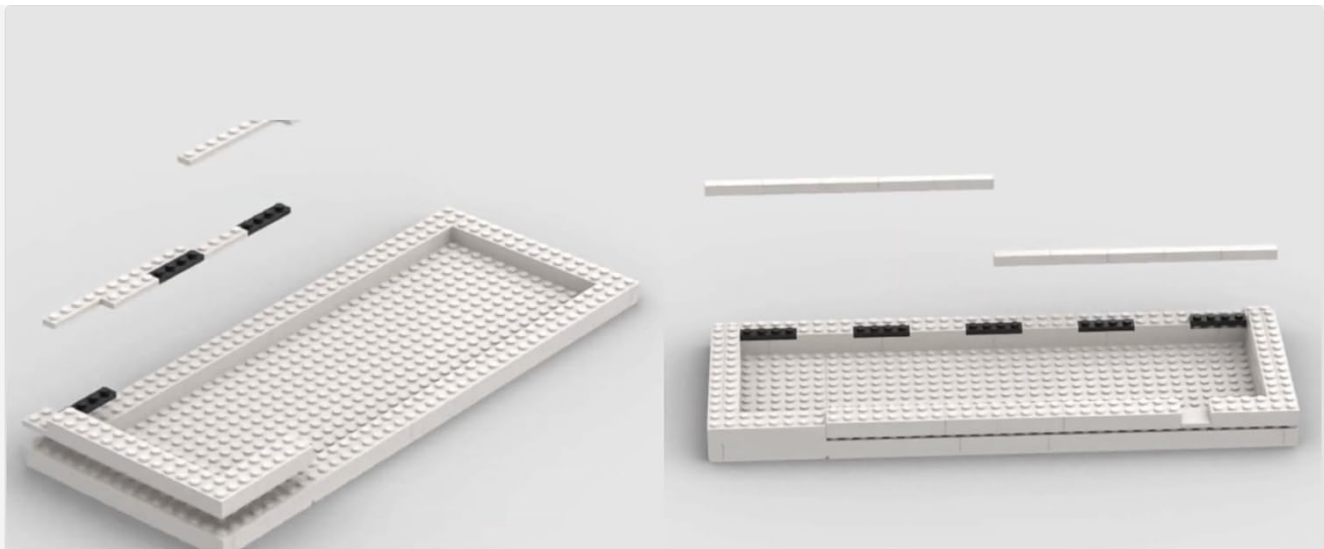


Image: Illustration of the gasket mount system, highlighting the flexible mounting points for the PCB and plate assembly.

3.2. Component Installation

Once the case is assembled, install the internal components:

1. Place the PCB and plate assembly into the assembled case. The gasket mount design will provide a cushioned typing experience.
2. Install the switches into the hot-swappable sockets on the PCB. Ensure each switch is aligned correctly before pressing it firmly into place.
3. Attach the keycaps to the switches. Use the provided keycap puller if needed for precise placement or removal.



Assemble Keyboard From Scratch

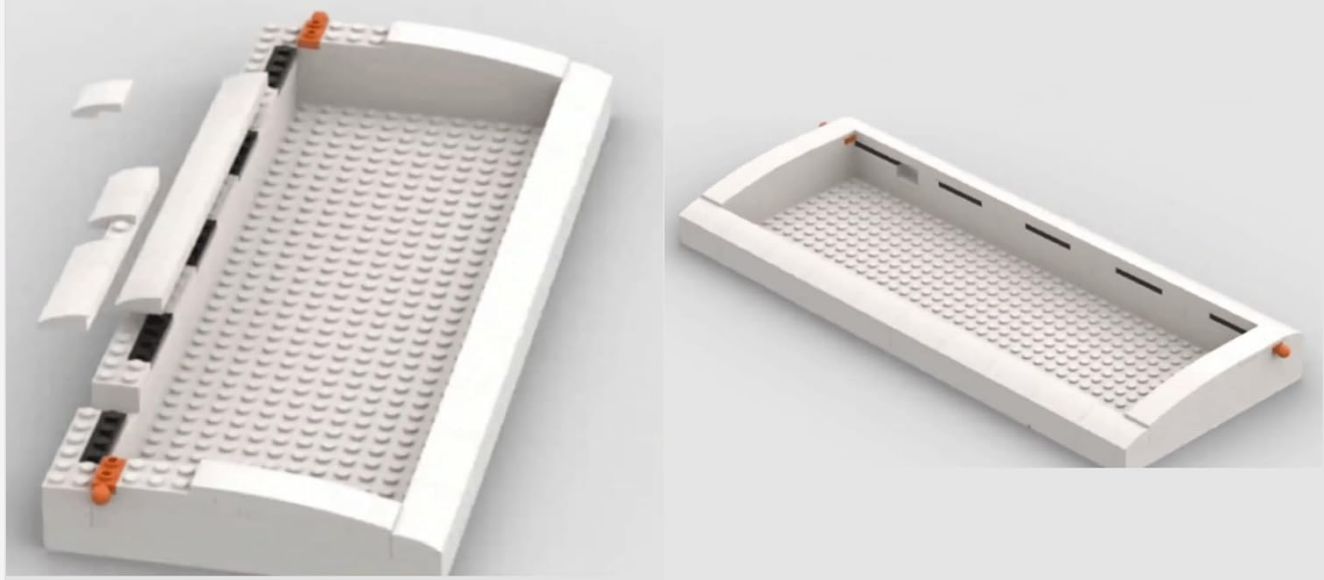


Image: The keyboard's internal plate and PCB, showing the hot-swappable sockets and pre-installed stabilizers, ready for switch insertion.

3.3. Connecting to Your Computer

Connect the keyboard to your computer using the provided USB-C cable:

1. Insert the USB-C end of the cable into the port on the keyboard.
2. Insert the USB-A end of the cable into an available USB port on your computer.
3. The keyboard is plug-and-play and should be recognized automatically by your operating system (Windows/macOS).

4. OPERATING INSTRUCTIONS

4.1. Basic Keyboard Functions

The KBDcraft 02Lilith Q 75% keyboard operates as a standard QWERTY layout keyboard. All standard keys function as labeled. The 75% layout includes essential keys while maintaining a compact form factor.

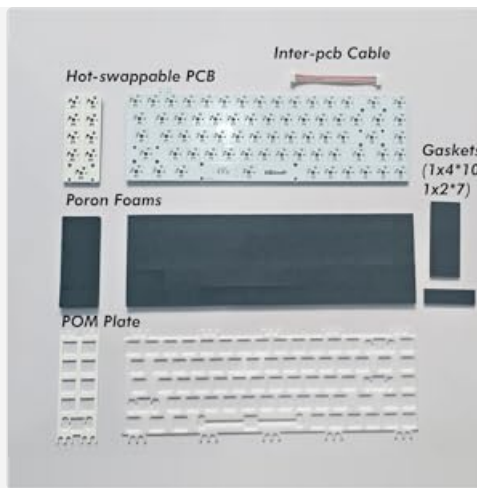


Image: Visual representation of the 75% keyboard layout, showing the arrangement of keys.

4.2. Hot-Swappable Switches

The keyboard features hot-swappable sockets, allowing you to change mechanical switches without soldering. This supports both 3-pin and 5-pin switches.

1. To remove a switch, use a switch puller (not included, but recommended for switch changes) to gently grip the top and bottom clips of the switch and pull upwards.
2. To install a new switch, align the pins of the new switch with the holes on the PCB. Ensure the switch is oriented correctly.
3. Press the switch firmly until it clicks into place. Do not force the switch if it does not go in easily; check for bent pins.



Image: A detailed view of a linear mechanical switch, illustrating its components.

4.3. RGB Lighting Control

The keyboard supports RGB backlighting with over 40 different effects. Use the following key combinations to control the lighting:

- **FN + W/E:** Change RGB Brightness.
- **FN + Left/Right Arrow:** Change RGB Modes (cycle through effects).
- **FN + Q:** Turn On/Off RGB.

5.5° Adaptive Gasket Mount



37 x 12.7 x 3 cm / 14.57 x 5 x 1.18 inch

**Carefully selected 90 parts to form a Case structure
Hold the Core with an inclination of 5.5 degrees**

Image: The KBDcraft 02Lilith keyboard illuminated with vibrant RGB backlighting, showcasing different color patterns.

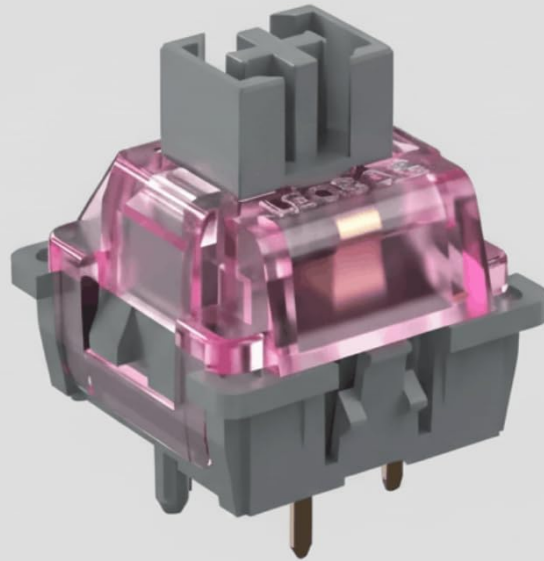
4.4. QMK/VIAL Customization

The KBDcraft 02Lilith keyboard is compatible with open-source QMK firmware and programmable via VIAL for advanced customization. VIAL allows for real-time key remapping, macro creation, and RGB lighting customization without needing to recompile firmware.

1. Download the VIAL software from the official VIAL website (get.vial.today).
2. Connect your keyboard to your computer.
3. Launch the VIAL application. The software should automatically detect your keyboard.
4. Use the VIAL interface to remap keys, create macros, and customize RGB effects. Changes are applied in real-time.

S² Engine

3-pin Cherry Profile - Pre-lubed Kailh Custom Switch



Linear



Stem



Operation
Force



Travel



Life

Image: A graphical user interface of the VIAL software, demonstrating options for key remapping and RGB lighting adjustments.

4.5. Left-side Macro Pad

The keyboard includes an innovative 10% PCB on the left side, featuring 8 FN keys and 1 additional function key for extended control and macro capabilities. These keys can be programmed using VIAL software to perform specific actions or complex macros.



More Macro Keys

Extra 10% PCB

9 Keys

Image: A detailed view of the keyboard's left-side macro pad, highlighting the additional FN keys for custom functions.

5. MAINTENANCE

5.1. Cleaning

Regular cleaning helps maintain the keyboard's appearance and functionality:

- Disconnect the keyboard from your computer before cleaning.
- Use a soft, lint-free cloth slightly dampened with water or a mild cleaning solution to wipe down the keycaps and case.
- For dust and debris between keycaps, use compressed air or a small brush.
- Avoid spraying liquids directly onto the keyboard.

5.2. Keycap and Switch Replacement

Refer to section 4.2 for instructions on replacing switches. To replace keycaps, gently pull the keycap upwards using the provided keycap puller. Align the new keycap with the switch stem and press down firmly until it is seated.

6. TROUBLESHOOTING

6.1. Keyboard Not Responding

- Ensure the USB cable is securely connected to both the keyboard and the computer.
- Try connecting the keyboard to a different USB port on your computer.
- Test the keyboard on another computer to determine if the issue is with the keyboard or the computer's port/drivers.
- If using a USB hub, try connecting directly to the computer.

6.2. RGB Lighting Not Working

- Ensure RGB lighting is not turned off (press FN + Q).
- Check brightness levels (press FN + W/E).
- If using VIAL, ensure the lighting settings are correctly configured and applied.
- Restart your computer.

6.3. Keys Not Registering

- Remove the keycap and switch for the non-functioning key.
- Inspect the switch pins for any bends or damage. Straighten bent pins carefully or replace the switch if damaged.
- Reinsert the switch firmly into the hot-swappable socket.
- If the issue persists, try swapping the switch with a known working switch from another key to isolate the problem.

7. SPECIFICATIONS

| Feature | Detail |
|--------------------------------|---|
| Brand | KBDcraft |
| Model Number | Lilith Q 75% |
| Connectivity Technology | USB-C (Wired) |
| Keyboard Description | Mechanical |
| Switch Type | Linear (Kailh Red) |
| Special Features | Backlit, Ergonomic (5.5° tilt), Hot-Swappable, Hotkeys and Media Keys, Silent |
| Keyboard Backlighting | RGB |
| Keyboard Layout | 75% QWERTY with 10% Left-side Macro Pad (9 keys) |
| Number of Keys | 77 |
| Case Material | Plastic (Lego-Compatible Brick-Built) |
| Keycap Profile | OEM Profile Doubleshot PBT |
| Firmware Support | QMK/VIAL |
| Product Dimensions (L x W x H) | 14.57" x 5" x 1.18" (37 x 12.7 x 3 cm) |
| Item Weight | 2.87 Pounds |
| Compatible Devices | Laptop, PC (Windows/macOS) |

8. WARRANTY AND SUPPORT

8.1. Warranty Information

The KBDcraft 02Lilith 75% Ergonomic Mechanical Keyboard comes with a **180-day warranty** from the date of purchase. This warranty covers manufacturing defects and malfunctions under normal use. It does not cover damage caused by misuse, accidents, unauthorized modifications, or improper assembly.

8.2. Customer Support

For technical assistance, warranty claims, or any questions regarding your KBDcraft product, please contact KBDcraft customer support through their official channels. You can find more information and contact details on the [KBDcraft Amazon Store](#).

