

manuals.plus /

› [ESSGOO](#) /
› [ESSGOO 10.26-inch Portable Wireless CarPlay & Android Auto Display with 4K Dash Cam and 1080P Rear Camera User Manual](#)

ESSGOO 2a6b5c0b-ab67-461a-bddc-59e7f19fcbb4

ESSGOO 10.26-inch Portable Wireless CarPlay & Android Auto Display User Manual

Model: 2a6b5c0b-ab67-461a-bddc-59e7f19fcbb4

1. INTRODUCTION

This manual provides detailed instructions for the installation, operation, and maintenance of your ESSGOO 10.26-inch Portable Wireless CarPlay & Android Auto Display. Please read this manual thoroughly before using the product to ensure proper function and safety. Keep this manual for future reference.



Image 1.1: The ESSGOO 10.26-inch Portable Wireless CarPlay & Android Auto Display, showing the main unit, front camera, rear camera, and mounting accessories.

2. PRODUCT OVERVIEW

Key Features

- **Wireless CarPlay/Android Auto:** Seamless smartphone integration for navigation, music, and apps.
- **Dual Camera System:** 4K front camera with WDR technology and 1080P waterproof rear camera for comprehensive recording.
- **10.26-inch IPS Display:** Full HD (1600x600) resolution with wide viewing angles.
- **Wireless Mirror Link:** Supports Miracast/Airplay for screen projection from your smartphone.
- **Loop Recording:** Continuous recording with automatic overwriting of old files, critical event locking.
- **Voice Control:** Compatible with Siri and Google Assistant for hands-free operation.
- **Multiple Audio Output Modes:** Built-in speaker, AUX, FM transmitter, and Bluetooth 5.3.
- **Wide Vehicle Compatibility:** Suitable for most 12-24V vehicles.
- **Includes 64GB TF Card:** Ready for immediate recording.

Package Contents

Visualización de pantalla dividida



Image 2.1: Diagram showing the display unit, adhesive mount, stickers, 1080P rear camera (6m cable), AUX cable (1m), cigarette lighter power adapter (3m), user manual, and 64GB TF card.

- 1x ESSGOO 10.26-inch Display Unit
- 1x Adhesive Mount (141mm x 67mm x 2mm)
- 1x Set of Mounting Stickers
- 1x 1080P Rear Camera (with 6m cable)
- 1x AUX Cable (1m)
- 1x Cigarette Lighter Power Adapter (3m)
- 1x User Manual
- 1x 64GB TF Card

3. SETUP AND INSTALLATION

3.1 Mounting the Display

1. Clean the dashboard surface where the display will be mounted.
2. Attach the adhesive mount to the display unit and adjust the angle as desired.
3. Remove the protective film from the adhesive.
4. Firmly press the display unit onto the dashboard.



Image 3.1: Visual guide for mounting the display on the car's central console.

3.2 Connecting Power

Connect the Type-C power cable from the display to the cigarette lighter power adapter, then plug the adapter into your car's cigarette lighter socket.

3.3 Rear Camera Installation

The rear camera provides a 1080P ultra-high-definition video feed and an ultra-wide 170° viewing angle. It is waterproof for reliable outdoor use.

1. Connect the rear camera cable to the AV IN port on the main display unit.
2. Route the camera cable to the rear of your vehicle.
3. Connect the rear camera's positive power cable to your car's reverse light power source. This enables automatic display of the rear view when reversing.
4. Mount the rear camera in a suitable location, typically above the license plate.



Image 3.2: Wiring diagram for connecting the rear camera to the display and the car's reverse lights.

4. OPERATING INSTRUCTIONS

4.1 Wireless CarPlay & Android Auto

The ESSGOO display supports wireless Apple CarPlay and Android Auto, allowing you to access navigation, music, videos, and other applications from your smartphone directly on the display.

CarPlay y Android Auto

Admite control de voz y navegación GPS, dos sistemas de telefonía móvil disponibles, conecta tu teléfono para lograr una conducción segura y eficiente.



Image 4.1: The display showcasing both Apple CarPlay and Android Auto interfaces, with various compatible apps.

Connecting Apple CarPlay:

1. On the display, tap the CarPlay icon.
2. On your iPhone (iOS 10 or higher), activate Wi-Fi and Bluetooth.
3. Connect to the device named "ESSGOO-XXXXXX" via Bluetooth.
4. Confirm to use CarPlay when prompted.
5. Wait approximately 20 seconds for a successful connection.



Image 4.2: Step-by-step guide for connecting an iPhone to the display for Apple CarPlay functionality. For more information on CarPlay, visit [Apple CarPlay](#).

Connecting Android Auto:

1. On the display, tap the Android Auto icon.
2. On your Android phone (Android 11 or higher), activate Wi-Fi and Bluetooth.
3. Connect to the device named "ESSGOO-XXXXXX" via Bluetooth.
4. Allow the connection when prompted.
5. Wait 10-20 seconds for a successful connection.



Image 4.3: Step-by-step guide for connecting an Android phone to the display for Android Auto functionality. For more information on Android Auto, visit [Android Auto](#).

4.2 Voice Control

Utilize voice commands for hands-free navigation, calls, messages, and music playback, enhancing driving safety.



Image 4.4: The display showing voice command prompts for Google Assistant and Siri, integrated with navigation and music playback.

4.3 Wireless Mirror Link (AirPlay/Miracast)

Project your smartphone screen wirelessly onto the ESSGOO display using AirPlay (for iOS) or Miracast (for Android).
Note that Netflix is not supported via mirror link.

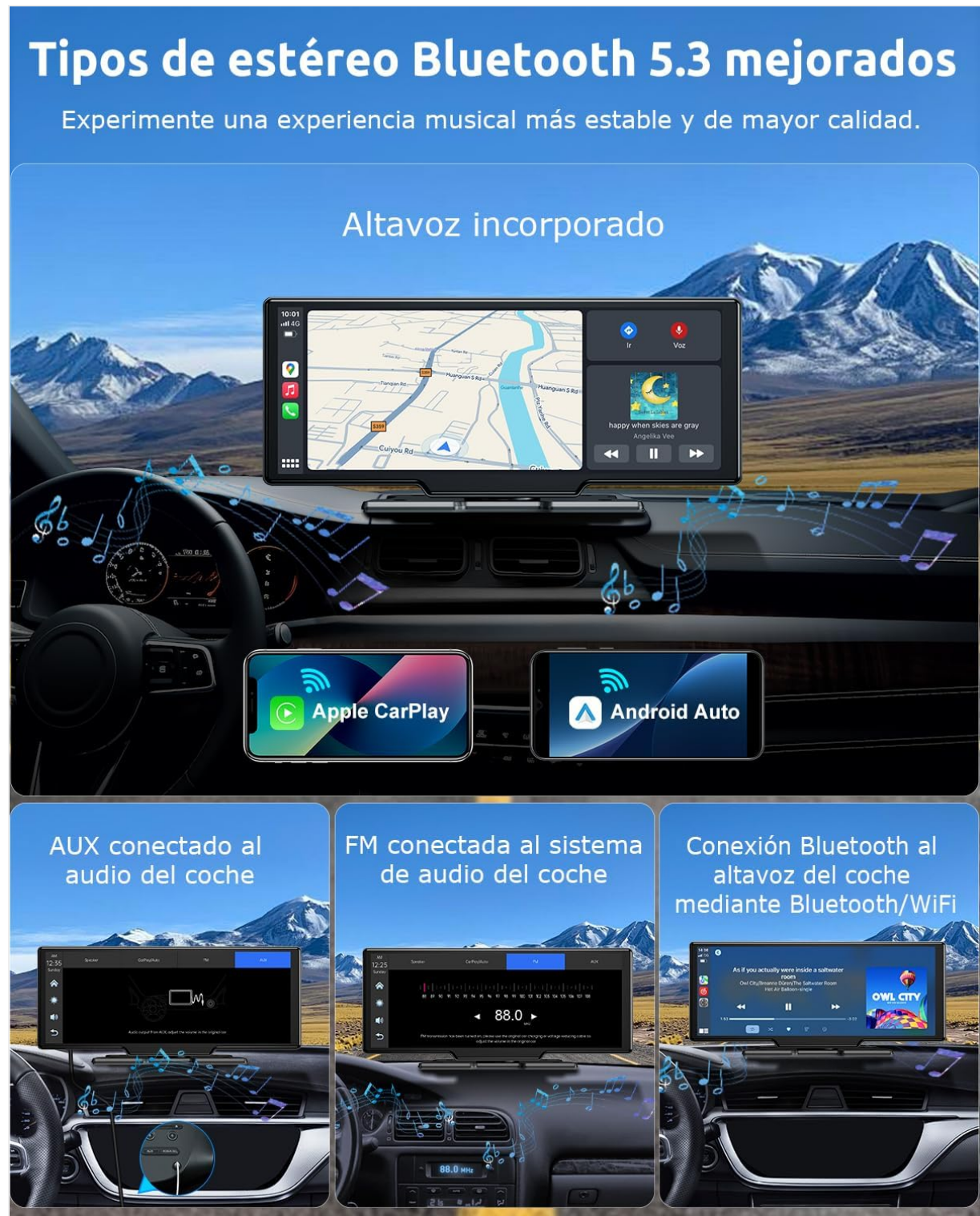


Image 4.5: The display mirroring a smartphone screen, illustrating the wireless mirror link feature.

AirPlay Connection Steps:

1. On the display, tap the AirPlay icon.
2. Connect to the device "ESSGOO-XXXXXX" via Wi-Fi and enter the password (default: 12345678).
3. Once Wi-Fi is connected, activate the screen mirroring function on your mobile phone.
4. Select the mirrored object.
5. Wait approximately 20 seconds for a successful connection.



Image 4.6: Step-by-step guide for connecting an iPhone to the display using AirPlay for screen mirroring.

Miracast Connection Steps:

1. On the display, tap the Android Miracast icon.
2. Activate the Miracast interface on your Android phone.
3. Find the mobile phone screen projection function (Wireless Projection) in your phone's system settings.
4. Click to connect the device: "ESSGOO-BTXXXXXX".
5. Wait 10-20 seconds for a successful connection.

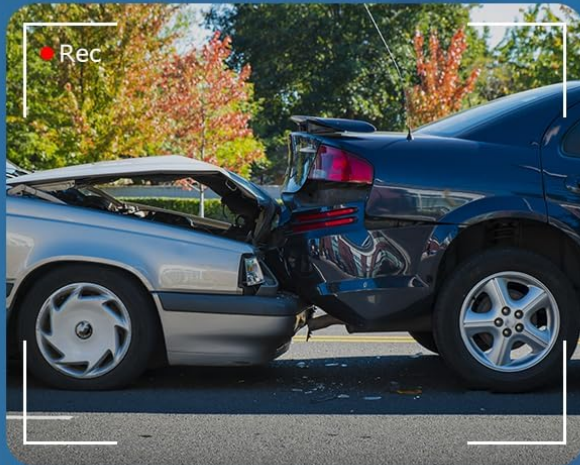


Image 4.7: Step-by-step guide for connecting an Android phone to the display using Miracast for screen mirroring.

4.4 Camera Functions (Dash Cam & Rear Camera)

The integrated front 4K camera and optional 1080P rear camera provide comprehensive video recording capabilities.

Cámara frontal 4K y cámara trasera 1080P



Ángulos amplios de 170°



Alta
definición 4K



Impermeable



Gran angular
de 170°



Visión
nocturna



Asistencia de
estacionamiento



Pantalla
dividida



Grabación
en bucle



Tarjeta TF
de 64 GB



Ángulos amplios de 140°

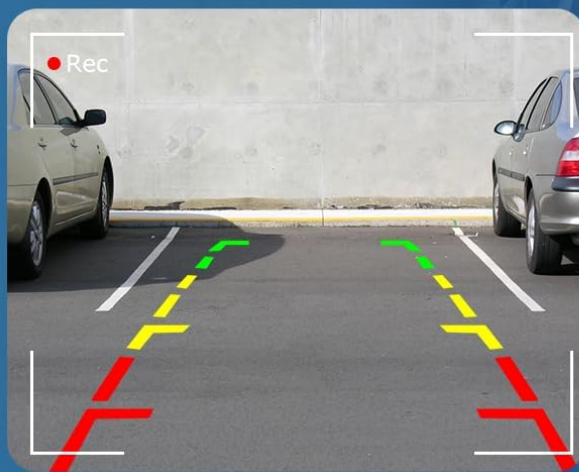


Image 4.8: Overview of the camera system, highlighting 4K HD, waterproof design, 170° wide angle, night vision, parking assistance, split screen, loop recording, and included 64GB TF card.

Loop Recording:

The device supports intelligent loop recording. When the storage card is full, the system automatically overwrites the oldest unlocked files to ensure continuous recording. Important videos can be locked to prevent overwriting in case of an accident.

Adecuado para la mayoría de vehículos de 12-24 V

Compatible con el 99% de los modelos de coches del mercado, permitiéndote disfrutar de la navegación, llamadas, música y otras funciones mientras conduces.



Coche



Furgoneta camper



Remolques



Furgoneta



Caravana



Camión

12-24V

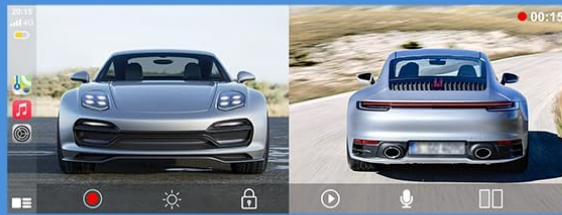


Image 4.9: Visual representation of the loop recording function, showing continuous video capture and automatic memory management.

Split Screen Display:

The 10.26-inch display supports various split-screen modes, allowing you to view multiple functions simultaneously, such as navigation and music, or front and rear camera feeds.

Pantalla táctil dividida de 10,26 pulgadas



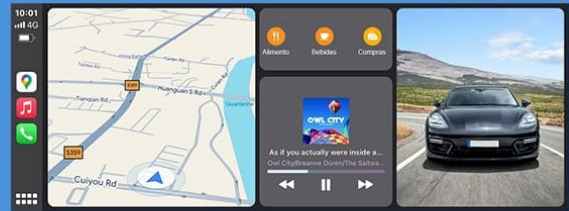
Cámara frontal y trasera



GPS+Delantero/Trasero



GPS+Música



GPS+Música+Delantero/Trasero

Escanee el código QR antes de comprar para confirmar si su modelo de coche es compatible.



Modelos compatibles con CarPlay



Modelos compatibles con Android Auto

Image 4.10: Examples of split-screen configurations, including front and rear camera views, GPS with front/rear camera, GPS with music, and GPS with music and front/rear camera.

Viewing and Sharing Recordings:

You can view and share your dash cam recordings directly from your smartphone by scanning a QR code to download the companion app.



Image 4.11: Guide for scanning a QR code to download the Viidyre app for viewing, replaying, sharing, and downloading recorded videos.
Download the Viidyre app here: [Viidyre App](#).

4.5 Audio Output Options

The display offers multiple ways to output audio to your car's sound system:

- **Built-in Speaker:** For direct audio output from the device.
- **AUX Connection:** Connect via the included 3.5mm AUX cable to your car's audio input for higher quality sound.
- **FM Transmitter:** Transmit audio wirelessly to your car's FM radio by tuning to a specific frequency.
- **Bluetooth 5.3:** Connect to your car's Bluetooth system for wireless audio streaming.

Enlace de espejo inalámbrico

Pantalla táctil de 10.26 pulgadas con resolución HD de 1600 x 600, compatible con iPhone a través de Airplay, Android a través de Miracast y CarPlay.



Image 4.12: Illustration of the different audio output methods: built-in speaker, AUX connection, FM transmitter, and Bluetooth connection to the car's audio system.

Bluetooth 5.3 Connection Steps:

1. On the display, tap the Bluetooth Music icon.
2. Select "BT Manage".
3. Connect to the device named "ESSGOO-XXXXXX" from your phone's Bluetooth settings.
4. Once successfully connected, you can play music from your phone.

Pasos para la conexión de duplicación inalámbrica Miracast



Image 4.13: Step-by-step guide for connecting your smartphone to the display via Bluetooth 5.3 for audio streaming.

5. MAINTENANCE

- Keep the display clean using a soft, dry cloth. Avoid abrasive cleaners.
- Ensure all cables are securely connected.
- Regularly check the rear camera for dirt or obstructions and clean as needed.
- Periodically format the TF card to maintain optimal recording performance and free up space. Back up important recordings before formatting.
- Avoid exposing the device to extreme temperatures or direct sunlight for prolonged periods.

6. TROUBLESHOOTING

Issue	Possible Cause	Solution
Display does not power on.	No power, loose connection, faulty power adapter.	Check power cable connection to the cigarette lighter and the display. Ensure the car's power outlet is functional.
CarPlay/Android Auto not connecting.	Bluetooth/Wi-Fi off, incorrect pairing, incompatible phone OS.	Ensure phone's Bluetooth and Wi-Fi are active. Re-pair the device. Verify phone OS compatibility (iOS 7+, Android 11+). Clear connection records on both devices and try again.
No audio or poor audio quality.	Incorrect audio output setting, loose AUX cable, FM interference.	Check audio output settings on the display (Built-in Speaker, AUX, FM, Bluetooth). Ensure AUX cable is fully inserted. If using FM, try a different frequency to avoid interference. Adjust car stereo volume.
Rear camera not displaying.	Loose connection, incorrect wiring, faulty camera.	Check the rear camera cable connection to the display. Verify the camera's power connection to the reverse light.
Device gets excessively hot.	Prolonged use in high temperatures, poor ventilation.	Ensure adequate ventilation around the device. Avoid direct sunlight exposure. If overheating persists, discontinue use and contact support.
Screen mirroring issues.	Wi-Fi connection issues, app incompatibility.	Ensure stable Wi-Fi connection. Note that some apps (e.g., Netflix) are not supported for mirroring.

7. SPECIFICATIONS

Feature	Specification
Brand	ESSGOO
Model	2a6b5c0b-ab67-461a-bddc-59e7f19fcbb4
Display Size	10.26 inches
Display Type	IPS Touchscreen
Display Resolution	1600 x 600
Front Camera Resolution	4K
Rear Camera Resolution	1080P
Connectivity Technology	Auxiliary, Bluetooth 5.3, Wi-Fi
Compatible Devices	Smartphone (iOS 7+ for CarPlay, Android 11+ for Android Auto/Miracast)
Audio Output Mode	Stereo
Supported Internet Services	Airplay
Media Format	4K
Product Weight	1 kg
Dimensions	28.1 x 14.1 x 10.4 cm
Power Input	12-24V DC

8. COMPATIBILITY

The ESSGOO 10.26-inch display is designed to be compatible with a wide range of vehicles, supporting 12-24V power systems. This includes most cars, camper vans, trailers, and trucks.

Pasos para la conexión de duplicación inalámbrica de Airplay

01



Haga clic en el icono de Airplay

02



Conéctese al dispositivo "ESSGOO-XXXXXX" e introduzca la contraseña: 12345678

03



Cuando la conexión wifi sea exitosa, activa la función de duplicación de pantalla del teléfono móvil.

04



Seleccione el objeto reflejado

05



Esperando unos 20 segundos para una conexión exitosa

Nota:

- 1. Tu iPhone debe tener iOS 10 o superior.
- 2. Compatible con la proyección de pantalla en la mayoría de las aplicaciones.
- 3. El cambio entre pantalla horizontal y vertical depende de la aplicación.
- 4. Para salir de la proyección de pantalla, debes salir manualmente de la función.

Image 8.1: Illustration showing the compatibility of the display with various 12-24V vehicles, including cars, camper vans, trailers, and trucks.

9. WARRANTY AND SUPPORT

For warranty information, technical support, or service inquiries, please refer to the contact details provided with your purchase or visit the official ESSGOO website. Keep your proof of purchase for warranty claims.

