

## CYBERDOT LocatePro

# CYBERDOT LocatePro Smart Tracker Tags - User Manual

MODEL: LOCATEPRO

Brand: CYBERDOT

## 1. Introduction

The CYBERDOT LocatePro Smart Tracker Tags are Apple MFi Certified Bluetooth item finders designed to help you locate your valuables using the Apple Find My app on iOS devices. These tags offer worldwide tracking capabilities, water resistance, and a long-lasting replaceable battery.

### What's Included:

- 2 x LocatePro Smart Tracker Tags
- 2 x Carrying Cases (for attaching to items)
- 1 x CR2032 Battery (pre-installed in each tag)
- User Manual

## 2. Setup

The LocatePro Smart Tracker Tags are designed for seamless integration with the Apple Find My app. No additional app downloads or fees are required.

### Pairing Your Tracker Tag:

1. Ensure your iOS device's Bluetooth is turned on.
2. Open the **"Find My"** app on your iPhone or iPad.
3. Tap the **"Items"** tab at the bottom of the screen.

4. Tap **"Add Item"**, then select **"Other Supported Items"**.
5. Remove the battery activation tab from your LocatePro Smart Tracker Tag. The tag will emit a sound indicating it's ready for pairing.
6. Your iOS device will search for the tag. Once **"LocatePro"** appears, tap **"Connect"**.
7. Follow the on-screen prompts to name your tag and select an emoji to represent it.
8. Tap **"Agree"** to the terms and then **"Finish"**. Your tag is now paired and ready to use.



Figure 2.1: Visual guide for pairing your LocatePro Smart Tracker Tag with the Apple Find My app.

Your browser does not support the video tag.

Video 2.1: Step-by-step instructions on how to pair the LocatePro Smart Tracker Tags with your Apple device.

### 3. Operating Instructions

#### Finding Items Nearby:

When your LocatePro tag is within Bluetooth range (up to 200ft/60m), you can use the Find My app to make it play a sound. Tap **'Play Sound'** in the app, and the tag will emit a "di di di" sound, guiding you to your item. You can also ask Siri to find it for you.



Figure 3.1: Locate items within Bluetooth range by playing a sound.

### Finding Items Far Away (Worldwide Tracking):

If your item is outside of Bluetooth range, the Find My app will display its most recent known location on a map. The extensive Apple Find My network, comprising millions of Apple devices worldwide, helps pinpoint your item's location, even if it's far away. The tracker tag itself does not store any location data, ensuring privacy.

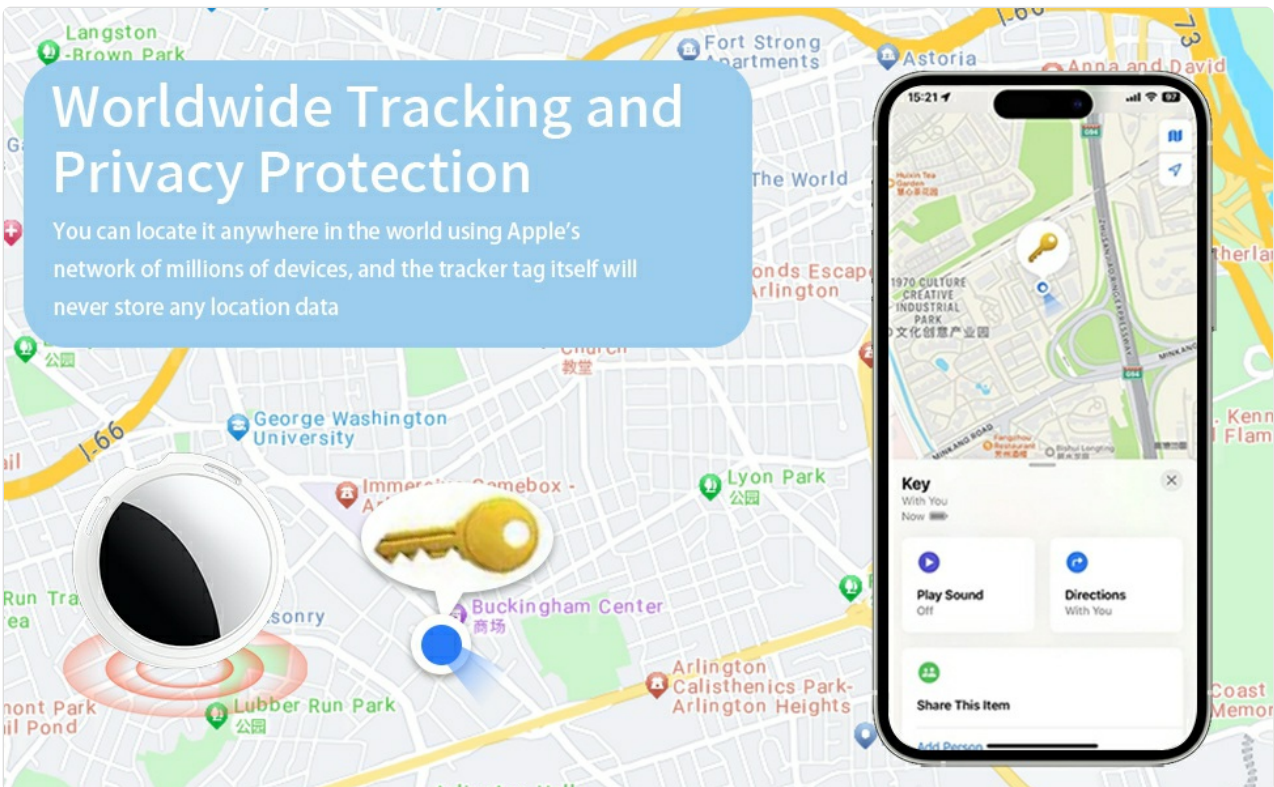


Figure 3.2: Track your items globally using the Apple Find My network.

### Left-Behind Remind:

Enable forgotten item alerts in the Apple Find My app. If you move beyond the range of your tag, your iPhone

will notify you, helping prevent loss.

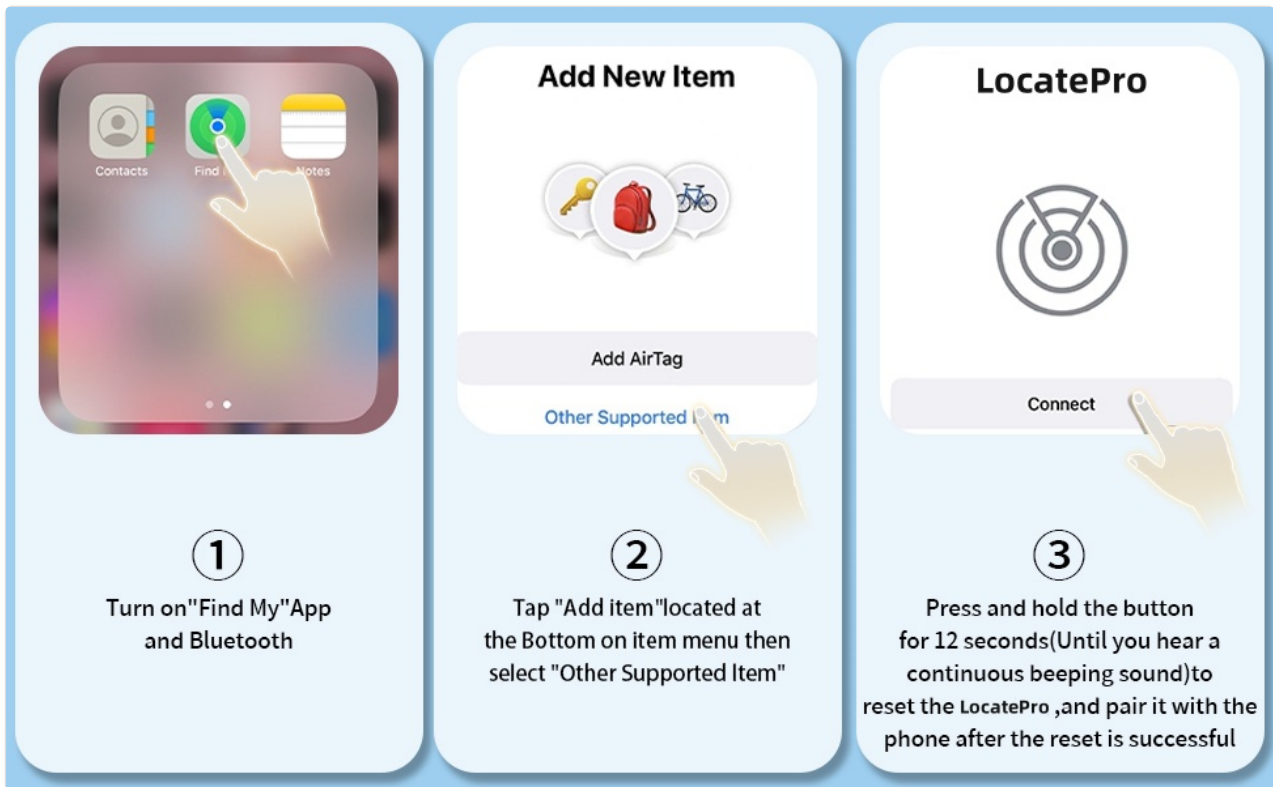


Figure 3.3: Receive alerts if you leave your item behind.

### Share Your Items:

The item finders tag allows you to share the location of your items with family members (a feature available for iOS 17 and later).

## 4. Maintenance

### Battery Replacement:

The LocatePro Smart Tracker Tag uses a replaceable CR2032 battery, which typically lasts up to a year. To replace the battery:

1. Locate the notched area on the side of the tracker tag.
2. Gently pry open the tag using your fingers or a small, non-abrasive tool.
3. Remove the old CR2032 battery.
4. Insert a new CR2032 battery with the positive (+) side facing up.
5. Align the two halves of the tag and press firmly until it clicks securely into place.



Figure 4.1: The LocatePro Smart Tracker Tag features a replaceable CR2032 battery.



Figure 4.2: How to open the tracker tag for battery replacement.

### Water Resistance:

The LocatePro Smart Tracker Tag is water-resistant (IP67 rated), making it suitable for outdoor use and capable of withstanding rain. However, it is not designed for prolonged submersion in water.

## 5. Specifications

Feature	Detail
Model Number	LocatePro
Connectivity Technology	Bluetooth
Supported Application	Apple Find My (iOS Only)
Special Feature	Water Resistant (IP67)
Battery Type	1 x CR2032 (included, replaceable)
Battery Life	Up to 1 year
Bluetooth Range	Up to 200ft / 60m
Sound Level	80-100dB
Item Weight	1.44 ounces
Package Dimensions	3.7 x 2.64 x 0.55 inches

## 6. Troubleshooting

---

### **Issue: Cannot pair the tracker tag.**

**Solution:** Ensure Bluetooth is enabled on your iOS device. Follow the pairing steps precisely: Open the Find My app, go to 'Items', tap 'Add Item', then 'Other Supported Items'. Press and hold the button on the LocatePro tag for 12 seconds until you hear a continuous beeping sound to reset it, then attempt to connect again.

### **Issue: Tag's location is not updating.**

**Solution:** The LocatePro tag relies on the Apple Find My network. When your item is far from you, an iOS device nearby is required to anonymously relay the tag's location information to your phone. Ensure there are active iOS devices in the vicinity of your lost item for location updates.

## 7. Warranty & Support

---

### **Warranty:**

The CYBERDOT LocatePro Smart Tracker Tags come with a 2-year warranty. Please refer to the product packaging or contact customer support for details regarding warranty claims.

### **Customer Support:**

For any questions, technical assistance, or support needs, please refer to the contact information provided in your product packaging or visit the official CYBERDOT website.