

[Manuals.plus](#) /

› [POLONO](#) /

› POLONO Bluetooth Thermal Shipping Label Printer Instruction Manual

POLONO PL80E

POLONO PL80E Bluetooth Thermal Shipping Label Printer Instruction Manual

Model: PL80E | Brand: POLONO

INTRODUCTION

The POLONO PL80E Bluetooth Thermal Shipping Label Printer is designed for efficient and clear label printing, ideal for small businesses and various shipping platforms. This 2025 new version offers high-speed printing up to 72 labels/min for 4x6-inch labels with 203 dpi resolution. It supports both fanfold and roll labels (0.97"-4.25" width) and is compatible with iOS, Android, Windows, and Mac operating systems via Bluetooth and USB connections. This manual provides detailed instructions for setup, operation, maintenance, and troubleshooting to ensure optimal performance.

WHAT'S IN THE BOX



The image shows the POLONO PL80E printer along with its included accessories: power cables, USB cables, a USB drive, and a stack of 4x6 thermal labels.

- 1 x PL80E Bluetooth Label Printer
- 1 x Power Cable
- 1 x USB Cable
- 1 x Power Adapter

Your browser does not support the video tag.

Official POLONO PL80E Operation Video demonstrating label loading and calibration.

3. Software Installation & Connection

The PL80E supports both Bluetooth and USB connections for printing.

3.1. Printing via Bluetooth (Mobile App)

Download the "Labelnize" app from Google Play Store (for Android) or Apple App Store (for iOS 13 or above). Always connect the printer through the app; do not connect directly via your device's Bluetooth settings. MAC OS does not support Bluetooth connection for this printer.

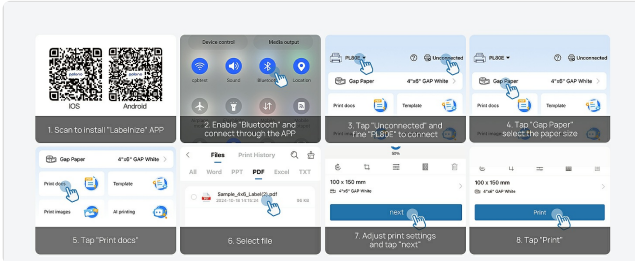


Image showing QR codes for Labelnize app download and steps to connect via Bluetooth through the app.

Your browser does not support the video tag.

Official POLONO PL80E Operation Video demonstrating app connection and basic printing.

3.2. Printing via USB (Windows & Mac)

For Windows 7+ and Mac OS, connect the printer using the provided USB cable. For Windows, successfully install the driver via USB before attempting to connect via Bluetooth. The PL80E does not support Chrome OS.



Image illustrating USB and Bluetooth connection options for various devices.

Your browser does not support the video tag.

Video demonstrating how to update firmware on a Mac, which includes connecting via USB.

OPERATING INSTRUCTIONS

1. Printing from the Labelnize App

After connecting the printer via Bluetooth through the Labelnize app, you can select documents, images, or use templates to print. Ensure the correct label size (e.g., 100x150 mm for 4x6 labels) is selected in the app settings.

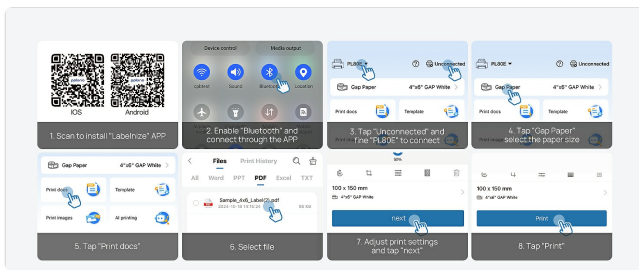


Image showing the Labelnize app interface with options for printing documents, images, and using templates.

2. Efficient and Clear Printing

The PL80E offers a print speed of 150 mm/s and a print quality of 203 DPI, allowing for up to 72 labels per minute. This ensures efficient and clear results for all your labeling needs.



Image highlighting the printer's speed (150 mm/s) and print quality (203 DPI).

3. Compatible with Multiple Platforms

The thermal printer is widely compatible with various marketplaces and shipping platforms such as Amazon, eBay, ShipStation, Shopify, UPS, FedEx, USPS, and more. Remember to download the 4x6 inch label to be printed on the corresponding platform before uploading it to the Labelnize app for printing.

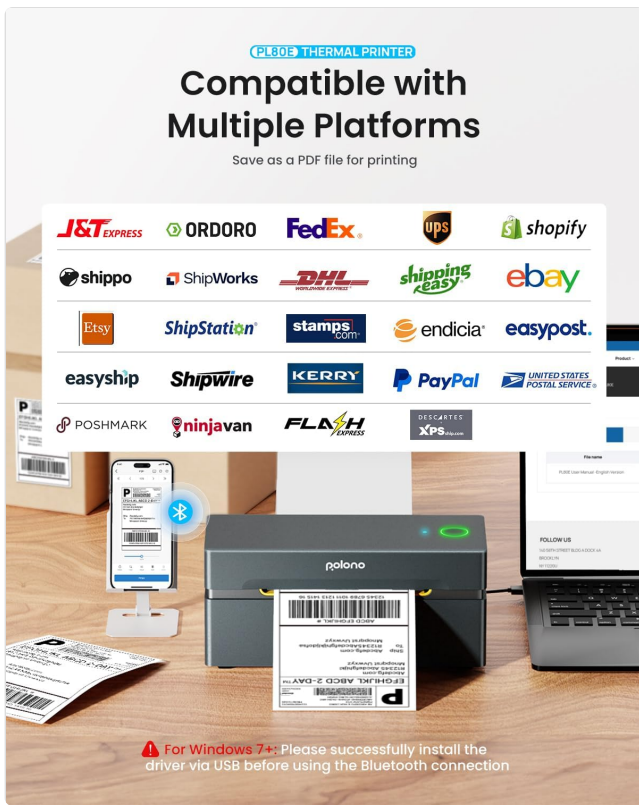


Image displaying logos of various e-commerce and shipping platforms compatible with the printer.

4. Suitable for Multi-Size Labels

The PL80E works with both fanfold and roll labels, supporting widths from 0.97" to 4.25" (25.4-108mm). This versatility allows for printing various label sizes beyond standard shipping labels, such as product labels, price tags, and organizational labels.



Image showing different label sizes (e.g., 4x6, 3x2, 2x1) and their applications.

PL805 THERMAL PRINTER

Label printer Suitable for Different Use

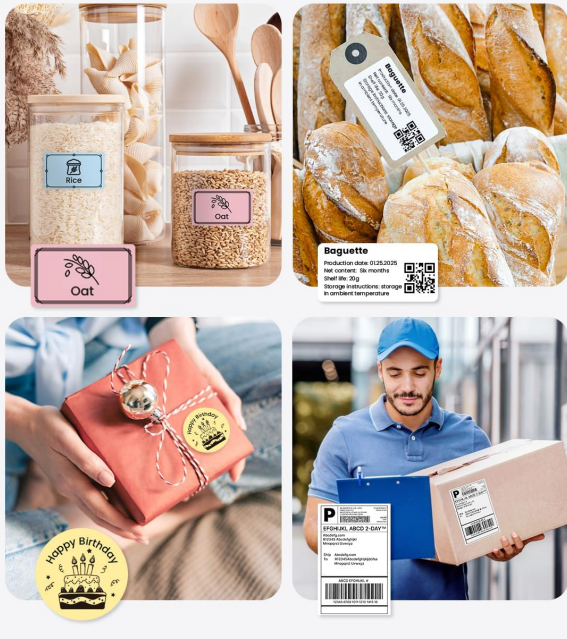


Image illustrating diverse uses such as kitchen labels, bakery labels, gift tags, and shipping labels.

MAINTENANCE

To ensure the longevity and optimal performance of your thermal printer, regular maintenance is recommended. Keep the printer clean and free from dust and debris. Use a soft, lint-free cloth to wipe the exterior. For the print head, refer to the user manual for specific cleaning instructions, typically involving an alcohol wipe designed for thermal print heads. Avoid using abrasive cleaners or solvents.

TROUBLESHOOTING

Common Issues and Solutions:

- **Printer not printing 4x6 labels or printing blank:**

Ensure the paper is loaded with the printing side facing up. Verify that the correct label size (100x150 mm) is selected in your printing software or the Labelnize app.

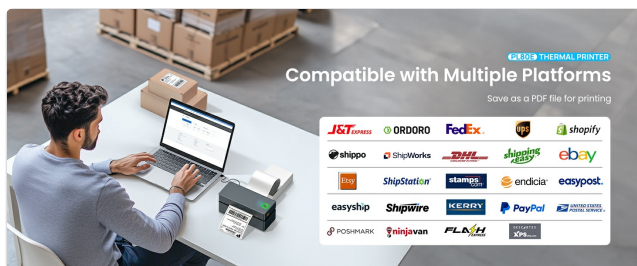


Image showing how to select 100x150mm paper size in Mac print settings.

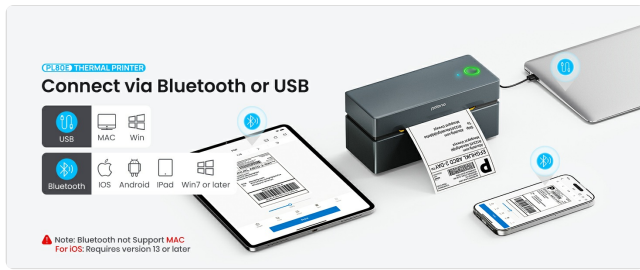


Image showing how to select 100x150mm paper size in Windows print settings.



Image showing how to select 100x150mm paper size in the mobile app.

- **Bluetooth connection issues on Windows:**

For Windows 7+ users, ensure you have successfully installed the printer driver via USB connection before attempting to connect via Bluetooth. Always connect through the "Labelnize" app, not directly through Windows Bluetooth settings.

- **MAC OS Bluetooth not supported:**

MAC OS does not support Bluetooth connection for the PL80E printer. Use a USB cable for connection and printing on Mac devices.

SPECIFICATIONS

Feature	Detail
Model Name	PL80E
Printing Technology	Thermal
Connectivity Technology	Bluetooth, USB
Maximum Media Size	4 x 6 inch
Print Speed (Monochrome)	72 labels/min (4x6 inch)
Print Resolution	203 DPI (203 x 203)
Compatible Devices	iOS 13 or later, Android, Windows 7 or later, Mac OS
Supported Label Width	0.97" - 4.25" (25.4-108mm)
Product Dimensions	7.91"D x 3.27"W x 3.66"H
Item Weight	3.26 pounds

WARRANTY AND SUPPORT

POLONO provides a **2-year warranty** for its thermal printers. Our dedicated customer support team is available to assist with any issues. You can reach them via email or phone, and they aim to provide a response within 24 hours. Detailed setup instructions are

also included with the printer to ensure easy installation and reliable performance.

For further assistance, please refer to the contact information provided in your user manual or visit the official POLONO website.