

VADANIA BF54

VADANIA 20 Inch Undermount Push-to-Open Drawer Slide Instruction Manual

Comprehensive instructions for installation, operation, and maintenance of your VADANIA BF54 drawer slides.

1. PRODUCT OVERVIEW

The VADANIA 20-inch Undermount Push-to-Open Drawer Slides (Model BF54) are designed for drawers requiring a concealed, bottom-mounted support system. These slides offer a full 3-fold extension and a push-to-open mechanism, eliminating the need for external handles. They are engineered for stability and can support loads up to 88 lbs.

- **True Undermount Design:** Attaches to the bottom of the drawer, ideal for drawers without side panels.
- **Bottom Support & Heavy Duty:** Provides enhanced stability and an 88 lb load capacity.
- **Push-to-Open & Full Extension:** Allows for handle-free operation and complete drawer access.
- **Invisible Elegance:** Concealed hardware maintains a clean, aesthetic appearance.



Image 1: A pair of VADANIA 20-inch undermount push-to-open drawer slides, showcasing their design and components.

Invisible Elegance

The slide remains hidden from view, making the drawer look more natural and aesthetically pleasing.



Image 2: A close-up view of a hand closing a drawer, demonstrating the invisible elegance of the concealed VADANIA undermount slides.

Buttom Mount & Buttom Support

This slide is bottom-mounted and bottom-supported, providing greater stability and higher load capacity.



Image 3: The VADANIA undermount drawer slide supporting multiple kettlebells, illustrating its bottom support and heavy-duty load capacity.

2. SPECIFICATIONS

Brand	VADANIA
Model Number	BF54
Size	20 Inch (500mm)
Style	Push to Open
Mounting Type	Under Mount, Bottom Support
Load Capacity	88 lbs (40 kg)
Extension Type	3-Fold Full Extension
Finish	Powder Coated

Product Dimensions (Closed)	20.87 x 3.46 x 2.2 inches (530 x 88 x 56 mm)
Installation Gap	1.1 inches (27mm)
Item Weight	4.29 pounds (1.95 kg)

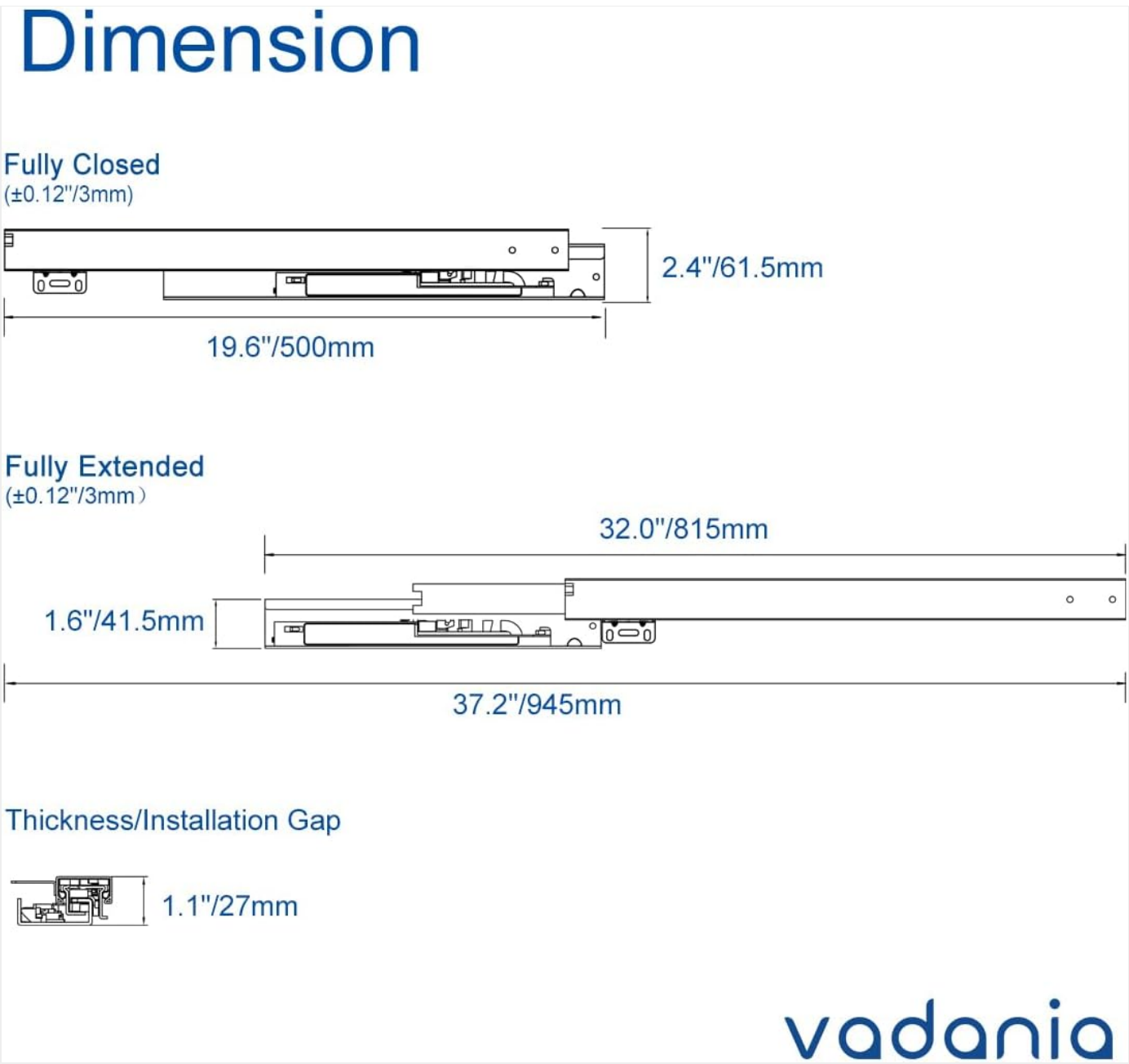


Image 4: Detailed dimensions of the VADANIA undermount drawer slide in both fully closed and fully extended states, including installation gap measurements.

3. INSTALLATION INSTRUCTIONS

These VADANIA undermount drawer slides are designed for straightforward installation, primarily requiring a bottom panel for support. Ensure your cabinet structure can accommodate a bottom-mounted slide system.

3.1 Pre-Installation Check

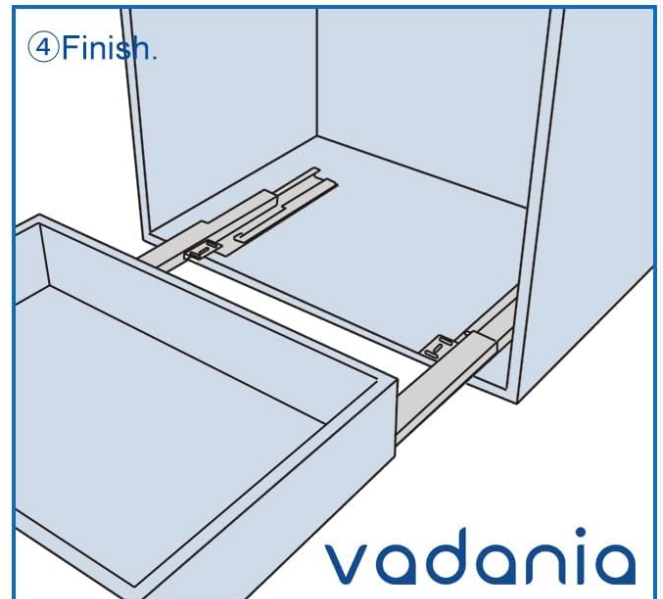
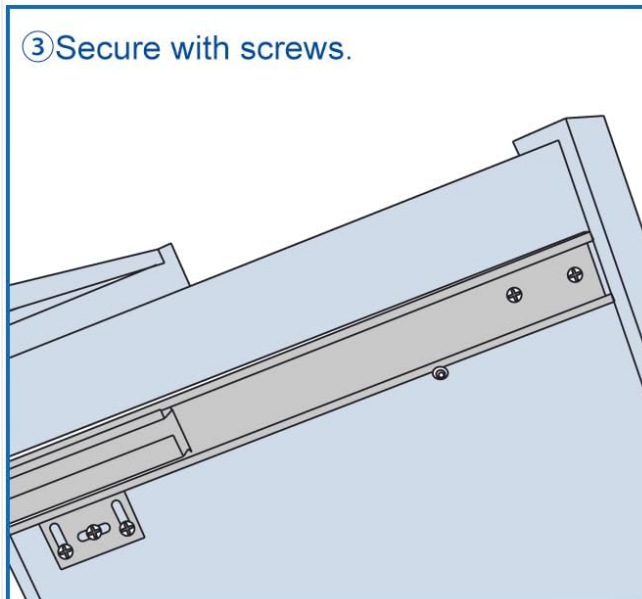
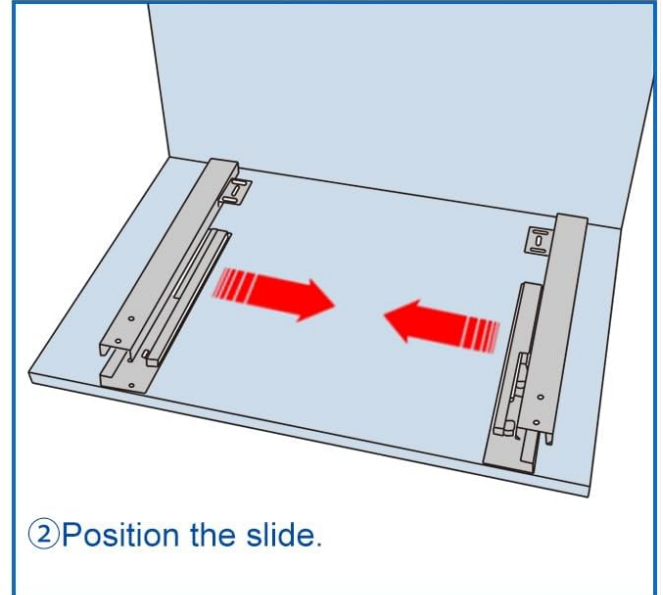
- Verify that your drawer and cabinet dimensions are compatible with the 20-inch slide length and 1.1-inch installation gap.
- Ensure the cabinet has a sturdy bottom panel to mount the slides.

- Gather necessary tools: measuring tape, pencil, drill, screwdriver, and appropriate mounting screws (screws are not included).

3.2 Step-by-Step Installation

1. **Check Suitability:** Confirm the presence of a bottom panel in your cabinet where the slides will be mounted. This is essential for proper support.

Easy Installation



For specific installation steps, please refer to the video tutorial.

Image 5: Illustration of checking the cabinet for a suitable bottom panel before installation.

2. **Position the Slide:** Place the cabinet portion of the drawer slide onto the bottom panel of the cabinet. Ensure it is correctly aligned and centered.



Image 6: Visual guide for positioning the drawer slide within the cabinet base.

3. **Secure with Screws:** Use appropriate screws (not included) to firmly attach the slide to the cabinet's bottom panel. Ensure all mounting points are secured for stability.



Image 7: Demonstrates securing the drawer slide to the cabinet using screws.

4. **Attach to Drawer:** Once the cabinet slides are secured, attach the corresponding drawer portions of the slides to the bottom of your drawer box. Ensure proper alignment before fastening.



Image 8: Shows the process of attaching the slide mechanism to the underside of the drawer.

5. **Final Assembly:** Carefully insert the drawer into the cabinet, aligning the drawer slides with the cabinet slides. Test the push-to-open mechanism and full extension.



Image 9: The completed installation with the drawer inserted and ready for use.

For visual guidance, refer to the official VADANIA installation video if available on the product page or manufacturer's website.

Real Bottom-Mounted Drawer Slide

Unlike many so-called bottom-mounted drawer slides that actually attach to side walls, this is a rare true bottom-mounted drawer slide, perfect for drawers without side panels.



Image 10: An installed VADANIA undermount drawer slide in a cabinet, demonstrating its concealed nature and bottom-mounted support.

4. OPERATING INSTRUCTIONS

The VADANIA Push-to-Open drawer slides are designed for effortless, handle-free operation.

4.1 Opening the Drawer

To open a drawer equipped with these slides, gently push or press the drawer front inward. The push-to-open mechanism will engage, causing the drawer to release and extend slightly. You can then pull the drawer out fully to access its contents.

4.2 Closing the Drawer

To close the drawer, simply push it back into the cabinet until it fully retracts and the push-to-open mechanism latches, holding the drawer securely in its closed position.

Push to Open & Full-Extention



This drawer slide has 3 sections synchronized and fully pulled out. The push-to-open slides enable you to push or press the drawer slightly to open it, which is especially suitable for the cabinet or drawer without a handle.



Image 11: A visual representation of the push-to-open feature, showing a drawer opening with a gentle push.

5. MAINTENANCE

VADANIA drawer slides are designed for durability and require minimal maintenance. To ensure smooth operation and longevity:

- Periodically inspect the slides for any accumulated dust or debris. Clean with a dry cloth if necessary.
- Avoid applying excessive force when opening or closing drawers, as this can strain the mechanism.
- Do not use abrasive cleaners or solvents on the slides, as they may damage the finish or internal components.

6. TROUBLESHOOTING

If you encounter any issues with your VADANIA drawer slides, consider the following:

- **Drawer not opening/closing smoothly:** Check for obstructions in the slide mechanism or debris accumulation. Ensure the drawer is not overloaded beyond the 88 lb capacity.
- **Drawer not staying closed:** Verify that the push-to-open mechanism is engaging correctly. This might indicate a misalignment or a need to adjust the drawer front.
- **Drawer feels loose or wobbly:** Re-check all mounting screws on both the cabinet and drawer sides to ensure they are securely fastened.

For persistent issues or further assistance, please contact VADANIA customer support.




7. WARRANTY AND SUPPORT


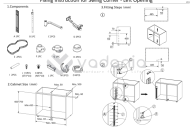

VADANIA is committed to providing high-quality hardware products. For information regarding product warranty, returns, or technical support, please refer to the official VADANIA website or contact their customer service department directly. Keep your purchase receipt for any warranty claims. You can visit the VADANIA store for more products and support:[VADANIA Store](#)



© 2025 VADANIA. All rights reserved. Model BF54.

Related Documents - BF54

	<p>Vadania VF1245 Push to Open Drawer Slides - Manual and Specifications</p> <p>Comprehensive guide to Vadania VF1245 Push to Open Drawer Slides, including detailed specifications, product features, installation instructions, and size selection advice. Learn about material, load capacity, dimensions, and proper installation.</p>
	<p>Vadania VA2053 Heavy Duty Drawer Slides - Specifications, Features, and Installation Guide</p> <p>Comprehensive guide to Vadania VA2053 Heavy Duty Drawer Slides, detailing specifications, product features like ball bearing and galvanizing treatment, installation instructions, and size selection. Ideal for mechanical, warehouse, and industrial cabinets.</p>
	<p>Vadania VD2576 Heavy Duty Drawer Slides: Installation and Specifications Manual</p> <p>Comprehensive guide for Vadania VD2576 heavy duty drawer slides, covering features, specifications, installation instructions, and size selection. Includes load capacity, dimensions, material details, and application scope.</p>

 <p>>>> Kitchen Cabinet Blind Corner Pullout Organizer Installation Guide</p>	<p>Vadania Kitchen Cabinet Blind Corner Pullout Organizer Installation Guide</p> <p>Comprehensive installation guide for the Vadania Kitchen Cabinet Blind Corner Pullout Organizer. Includes component lists, dimension specifications for 32"/800mm and 36"/900mm cabinets, step-by-step assembly instructions, and pre-installation checks.</p>
 <p>Fixing Instructions for Swing Corner - Left Opening</p>	<p>Fixing Instructions for Swing Corner - Left Opening</p> <p>Detailed instructions for the installation of a left-opening swing corner cabinet organizer, including component lists, cabinet size requirements, and step-by-step fitting procedures.</p>
 <p>VF1245 PUSH TO OPEN DRAWER SLIDES MANUAL</p> <p>vadania Hardware for your life</p> <p>Package 1000mm x 50mm 10 x 10mm screws</p> <p>Contact Us The official website http://www.vadania.com Email: info@vadania.com</p> <p>Product Page</p> <p>Page 1</p>	<p>Vadania VF1245 Push to Open Drawer Slides - Manual and Specifications</p> <p>Comprehensive guide to Vadania VF1245 Push to Open Drawer Slides, including detailed specifications, product features, installation instructions, and size selection advice. Learn about material, load capacity, dimensions, and proper installation.</p>