

[Manuals.plus](#) /

> [PGYTECH](#) /

> PGYTECH Camera Shoulder Strap Mount Quick Release Clamp User Manual

PGYTECH P-CG-195

PGYTECH Camera Shoulder Strap Mount Quick Release Clamp User Manual

Brand: PGYTECH | Model: P-CG-195

1. INTRODUCTION

The PGYTECH Camera Shoulder Strap Mount Quick Release Clamp is designed to provide photographers with a secure, convenient, and quick way to attach and detach their cameras from shoulder straps, tripods, and stabilizers. Crafted from durable aluminum alloy, this compact accessory ensures reliable performance and enhanced safety for your equipment.



2. KEY FEATURES

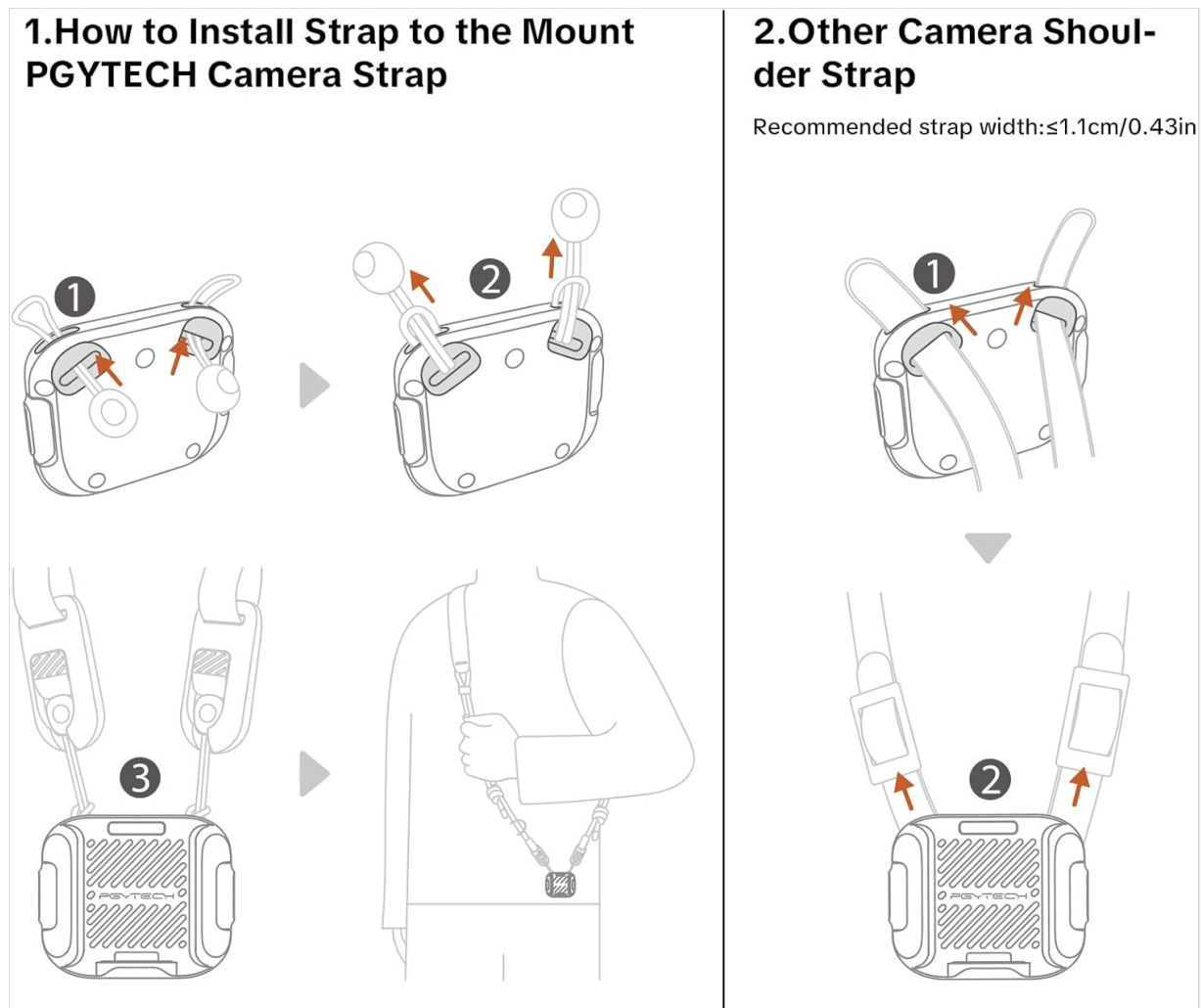
- **Wide Compatibility:** Supports 95% of square Arca-type Quick-Release plates on the market. Works seamlessly with PGYTECH camera strap series and other brands' camera straps.
- **Safe & Reliable:** Features a unique dual-button unlocking system to prevent accidental releases. Pressing both unlock buttons simultaneously is required for smooth quick release. A patented anti-loosening screw and thrust needle roller bearing ensure the camera remains secure, preventing slips or drops.
- **Compact & Powerful:** Weighing only 33g (1.16oz), the clamp supports loads up to 30kg (66lb), offering rugged performance, portability, and easy storage.
- **Durable Material:** Made of aluminum alloy, precision-crafted using CNC technology, and finished with a durable, wear-resistant hammered paint.
- **SnapLock Products System:** With an Arca standard plate, the SnapLock system enables quick switching between various PGYTECH accessories like the Beetle camera clip, Arca-Type Quick Release Clamp & Plate, MantisPod Series, and Ronin Stabilizer Quick Release Clamp.

3. PACKAGE CONTENTS

- PGYTECH Shoulder Strap Quick Release Clamp x 1

4. INSTALLATION

Follow these steps to properly install the Quick Release Clamp onto your camera strap.



1. Attaching to PGYTECH Camera Strap:

- a. Insert the strap's quick-release pin into the designated slots on the clamp.
- b. Ensure the pins are fully seated and locked securely.

2. Attaching to Other Camera Shoulder Straps:

- a. Thread your camera strap (recommended width ≤ 1.1 cm/0.43in) through the loops on the clamp.
- b. Adjust the strap to your desired length and secure it.

Once the clamp is attached to your strap, secure your camera to the clamp using an Arca-type quick release plate (not included with this 'Only Clamp' variant, but compatible with most standard plates).



A camera securely attached to a shoulder strap using the PGYTECH Quick Release Clamp.

5. OPERATION

The PGYTECH Quick Release Clamp allows for rapid attachment and detachment of your camera.

1. Attaching the Camera:

- a. Align your camera's Arca-type plate with the clamp's receiver.
- b. Slide the plate into the clamp until it clicks securely into place. Verify the connection by gently pulling on the camera.

2. Detaching the Camera:

- a. Simultaneously press the two red release buttons located on the sides of the clamp.
- b. While holding the buttons, slide the camera's plate out of the clamp.

Unique **dual-button** unlocking system



Press the buttons on both sides to attach or detach seamlessly

Detail of the unique dual-button unlocking mechanism, designed to prevent accidental releases and ensure camera security. Watch this video for a quick overview of the clamp's functionality:

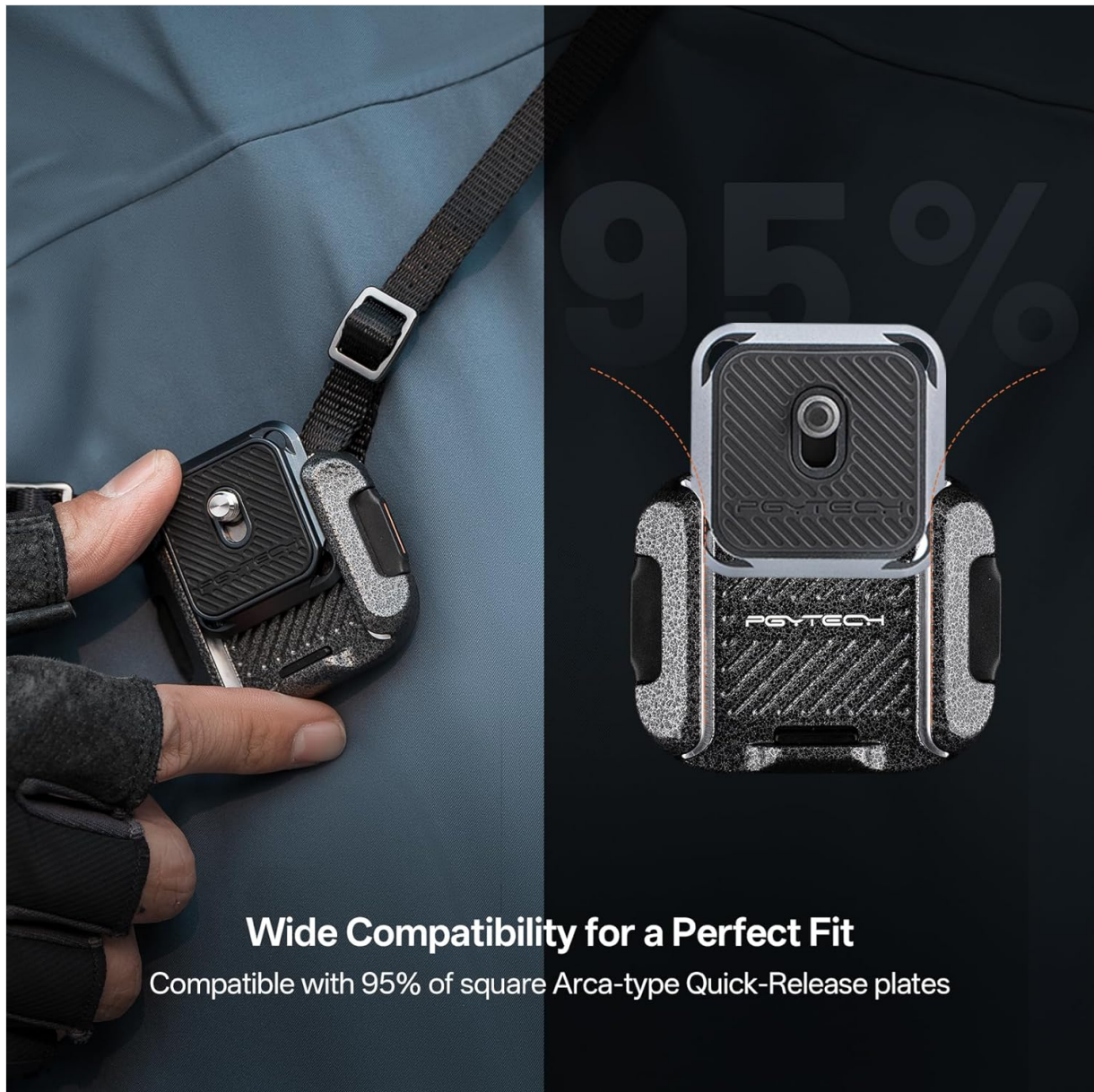
Your browser does not support the video tag.

Official product video showcasing the seamless integration and quick functionality of the PGYTECH Camera Strap Air and Quick Release Clamp.

6. COMPATIBILITY

The PGYTECH Quick Release Clamp is designed for broad compatibility:

- Supports 95% of square Arca-type Quick-Release plates.
- Compatible with PGYTECH camera strap series and other camera straps with appropriate attachment points.
- Integrates with the PGYTECH SnapLock Products System for quick transitions between various camera accessories.



Wide Compatibility for a Perfect Fit
Compatible with 95% of square Arca-type Quick-Release plates

Visual representation of the clamp's wide compatibility, supporting 95% of square Arca-type Quick-Release plates.

7. SAFETY GUIDELINES

- Always ensure the camera plate is fully engaged and locked into the clamp before use.
- Regularly inspect the clamp and camera plate for any signs of wear or damage. Discontinue use if damage is found.
- The dual-button unlocking system requires simultaneous pressing of both buttons to prevent accidental release. Always use this mechanism intentionally.
- Do not exceed the maximum load capacity of 30kg (66lb).



Highlighting the clamp's compact yet powerful design, capable of supporting loads up to 30kg (66lb).

8. SPECIFICATIONS

Brand	PGYTECH
Model Name	PGYTECH Shoulder Strap Quick Release Clamp
Model Number	P-CG-195
Compatible Devices	Cameras
Mounting Type	Shoulder Strap Mount
Special Feature	Hand Free, One-Hand Operation, Quick Release Button
Weight Capacity Maximum	30 Kilograms
Enclosure Material	Aluminum
Water Resistance Level	Not Water Resistant

9. MAINTENANCE

- Clean the clamp regularly with a soft, dry cloth to remove dust and debris.
- Avoid using harsh chemicals or abrasive materials that could damage the finish or internal mechanisms.
- Store the clamp in a dry, cool place when not in use.

10. TROUBLESHOOTING

- **Camera not attaching securely:** Ensure the Arca-type plate is correctly aligned and fully inserted until a distinct click is heard. Check for any obstructions in the clamp or on the plate.
- **Difficulty detaching camera:** Make sure both release buttons are pressed simultaneously and fully. If the plate is stuck, gently wiggle the camera while pressing the buttons.
- **Clamp feels loose:** Verify that the clamp is properly secured to your camera strap according to the installation instructions. If using a PGYTECH strap, ensure the quick-release pins are fully engaged.

11. WARRANTY AND SUPPORT

This PGYTECH product comes with a **1-Year Manufacturer Warranty**. For warranty claims, technical support, or further assistance, please contact PGYTECH customer service through their official website or the retailer where the product was purchased.