

## DC HOUSE ST-90

# DC HOUSE 9KW Steam Generator User Manual - Model ST-90

Your guide to safe and efficient steam generation.

[Information](#) [Components](#) [Setup](#) [Operation](#) [Maintenance](#) [Introduction](#) [Safety](#) [Troubleshooting](#) [Specifications](#) [Support](#)

## 1. INTRODUCTION

Thank you for choosing the DC HOUSE 9KW Steam Generator, Model ST-90. This unit is designed to provide a consistent and enjoyable steam experience for your sauna or steam shower room. Please read this manual thoroughly before installation and operation to ensure proper function and safety.



Figure 1: DC HOUSE 9KW Steam Generator and included accessories.

## 2. SAFETY INFORMATION

**WARNING: Failure to follow these safety instructions may result in electric shock, fire, or serious injury.**

- Always disconnect all electrical power before performing any installation, maintenance, or service on the unit.
- Installation and service should only be performed by qualified and authorized personnel.
- Ensure the unit is installed level with the arrows pointing upwards as indicated on the product label.
- When making plumbing connections to the water inlet, securely hold the fitting with a pipe wrench to prevent internal damage to the water solenoid valve.
- Do not touch the steam outlet when the steam function is active, and never block the steam outlet at any time.
- The unit is CE certified and includes water shortage protection, over-temperature protection (prevents dry burning), tank pressure safety protection, auto water inlet, and auto drainage features.



Figure 2: Important installation warnings on the unit.

### 3. INCLUDED COMPONENTS

The following items are typically included with your DC HOUSE 9KW Steam Generator:

- 1 x Steam Generator Unit
- 1 x Digital Control Panel

- 2 x Connecting Wires (for control panel)
- 1 x Steam Sprayer (Steam Head)
- 1 x User Manual (this document)

## 4. SETUP AND INSTALLATION

---

Proper installation is crucial for the safe and efficient operation of your steam generator. Refer to the video and diagrams for visual guidance.

### 4.1 Mounting the Steam Generator

The steam generator should be mounted in a location that allows for proper ventilation and access for maintenance. Ensure the unit is installed on a finished wall, level, and with the 'IMPORTANT' arrows pointing upwards.

### 4.2 Water Connections

Connect the water inlet, steam outlet, and drain line as shown in the installation video. The drain line is designed for automatic drainage.

- **Water Inlet:** Connect the water supply line to the designated water inlet port. Remember to use a pipe wrench to secure the fitting and prevent damage to the solenoid valve.
- **Steam Outlet:** Connect the steam line from the generator to the steam sprayer (steam head) inside your steam room.
- **Drain Line:** Connect the drain line. This unit features an auto-drain function for convenience.





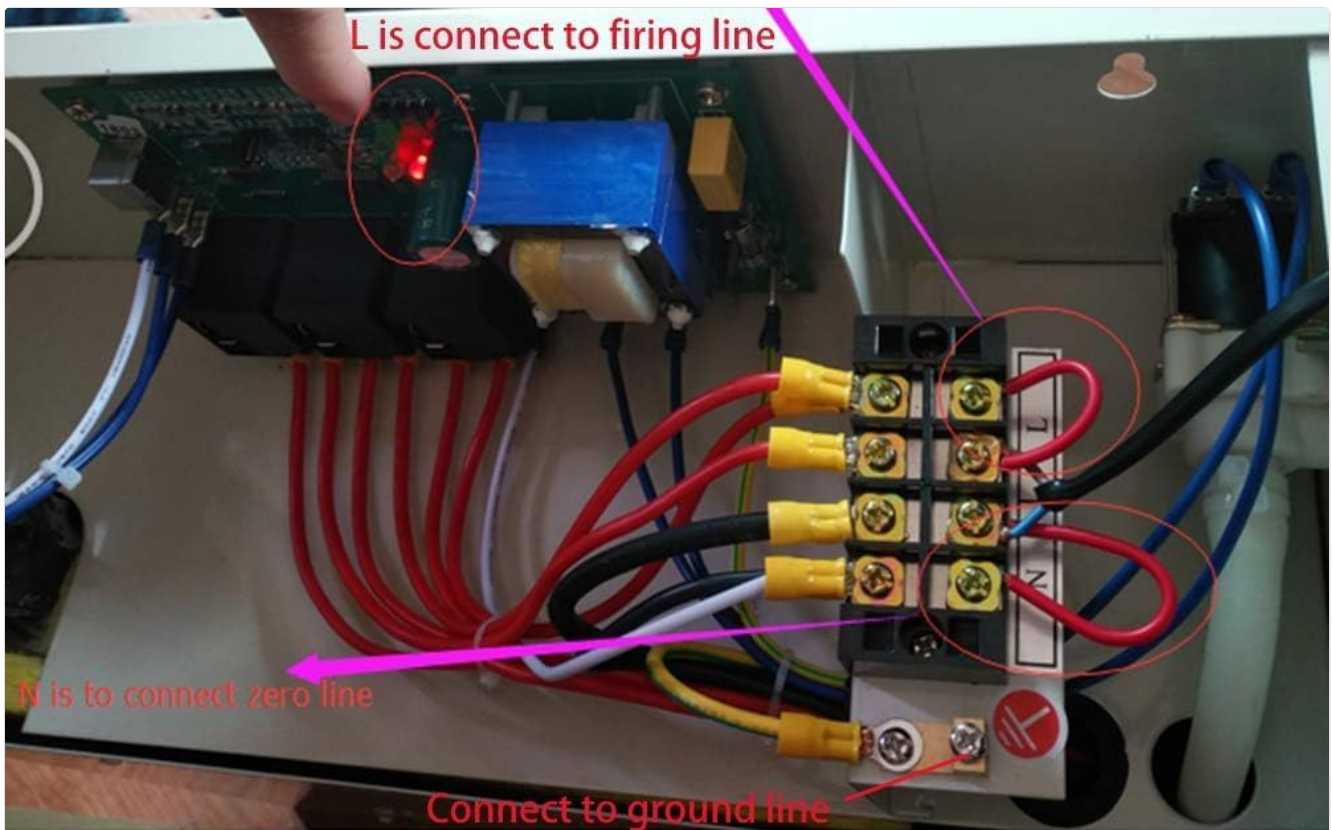
Figure 3: Water connection points on the steam generator.

### 4.3 Electrical Wiring

**WARNING: All electrical supplies must be disconnected before wiring. Consult a qualified electrician for proper installation.**

The unit requires USA-compatible wiring: connect to an 8-2Awg wire with a 50amp GFCI breaker (2 hot lines, 1 ground line).

1. Connect two 'N' (neutral) terminals in parallel with a short line.
2. Connect two 'L' (live/hot) terminals in parallel with a short line.
3. Connect three main wires:
  - One wire from a 'N' port to the outside zero line.
  - One wire from an 'L' port to the outside fire line (hot).
  - One wire to the ground line.



1. First you need to connect two N in parallel with a short line
2. Then you need to connect two L in parallel with a short line
3. Then you need 3 wires :
  - \* one wire is connected to one port of N, then connect to outside zero line.
  - \* one wire is connected to one port of L, then connect to outside fire line.
  - \* one wire is connected to ground line (as the picture shows)

Figure 4: Electrical wiring diagram.

#### 4.4 Control Panel and Temperature Sensor Installation

The control panel (ST-135 or ST-135A) can be mounted inside or outside the steam room, ideally 1.2-1.5 meters from the floor for convenient operation. The temperature sensor should also be installed 1.2-1.5 meters from the floor, avoiding locations near the door opening for accurate readings.

1. Drill a 2-inch hole for the control panel and a 10mm hole for the temperature sensor in the finished wall.
2. Thread the temperature sensor wire through its hole, apply silicone caulk around the housing, and fix it with screws.
3. The unit comes with 5m wires for the control panel. Route these wires to CN3 inside the generator and secure them.
4. Connect the control wire and temperature sensor plug firmly into their respective ports on the control panel.

## INSTALL CONTROL ST-135 OR ST-135A

- A. Install location (see diagram 5 control ST-135 or ST-135A)
  - a) Generator control ST-135 or ST-135A can be mounted directly to a finished wall either inside or outside the steam room.
  - b) Control ST-135 or ST-135A must be mounted 1.2~1.5m from the floor in order to operate steam generator and plug wires conveniently.
  - c) Using a 2-inch whole saw, drill a hole in the finished wall where the control is to be mounted.
- B. TEMP sensor location (see diagram 5 TEMP sensor)
  - a) In order that the temperature in the steam room is correct, the TEMP sensor must be installed 1.2m~1.5m from the floor and must be avoided installing at the side of opening the door.
  - b) Using a 10mm hole saw, drill a hole in the finished wall where the TEMP sensor is to be mounted.
  - c) Threading the wire of TEMP sensor outside the wall, run a bead of 100% silicone caulk around the perimeter on the back of the TEMP sensor housing. Fixed the TEMP sensor with two  $\Phi 3$  screw on the wall, cover the protective cover.
- C. Pull the wires
  - a) The unit is shipped with a wires, the length is 5m.
  - b) It is best way to use treading pipe and make a mark.
- D. Connect control wires (steam generator & control)

**⚠ Warning:** When inserting the control wire, all electrical supplies should be disconnected.

- a) Unscrew the nut on the cover, and remove the cover, see diagram 4, Insert control wire the hole, wires must be routed to CN3. The control wires must be fixed, and insert the cover.
- b) See diagram 5 ST-135 control, insert the control wire and TEMP sensor into the hole in the wall. The wire must be inserted into control plug (6 trucking cord) firmly, the TEMP sensor plug must be inserted into control plug (2 trucking cord) firmly.

Figure 5: Control panel and temperature sensor installation guidelines.

## 4.5 Installation Video Guide

For a visual step-by-step guide on the installation process, please watch the official video below:

Your browser does not support the video tag.

Video 1: How to Setup the DC HOUSE 9KW Steam Generator. This video demonstrates the process of connecting water lines, electrical wiring, and the control panel for the steam generator.

## 5. OPERATING INSTRUCTIONS

Once installed, operating your DC HOUSE Steam Generator is straightforward using the digital control panel.

### 5.1 Power On/Off

Use the designated power button on the control panel to turn the steam generator on or off.

### 5.2 Temperature Adjustment

The digital control panel allows you to adjust the steam room temperature within a range of 95-131°F (35-55°C). Use the up and down arrows to set your desired temperature.

### 5.3 Quick Heating

The unit is designed for quick and efficient heating, typically reaching ideal steam conditions within 3-5 minutes.

### 5.4 Automatic Functions

- **Auto Water Inlet:** The generator automatically fills with water as needed.
- **Auto Drain:** After each use, the auto-drain function eliminates the need for manual drainage, ensuring convenience and reducing mineral buildup.

## 6. MAINTENANCE

Regular maintenance ensures the longevity and optimal performance of your steam generator.

- **Automatic Drainage:** The integrated auto-drain system helps prevent mineral buildup. Ensure the drain line is clear and unobstructed.
- **Periodic Inspection:** Periodically inspect all water and electrical connections for any signs of leaks, corrosion, or damage. Address any issues promptly.
- **Cleaning:** Clean the exterior of the unit and the steam head with a soft, damp cloth. Do not use abrasive cleaners.

## 7. TROUBLESHOOTING

If you encounter issues with your steam generator, refer to the following common troubleshooting steps:

- **No Power:** Check the circuit breaker (50amp GFCI) and ensure all electrical connections are secure. Verify the unit is properly plugged in.
- **No Steam:** Ensure the water supply is turned on and the water inlet is not blocked. Check if the temperature setting is above the current room temperature.
- **Insufficient Steam:** Verify the steam room is properly sealed. Check for any blockages in the steam line or steam head.
- **Error Codes:** If the control panel displays an error code, refer to the specific error code section in the full user manual (if available) or contact customer support.
- **Water Leakage:** Immediately turn off the water supply and power to the unit. Inspect all plumbing connections for tightness.

If problems persist after attempting these steps, contact customer support or a qualified technician.

## 8. SPECIFICATIONS

Feature	Detail
Manufacturer	DC HOUSE
Model Number	ST-90
Power Output	9KW
Voltage	220V
Item Weight	20 pounds
Product Dimensions	17.5 x 6.5 x 15.6 inches
Color	White
Included Components	Steam generator, controller, wires, steam sprayer, user manual
Batteries Required	No
Safety Certifications	CE certified
Protection Features	Water shortage, over-temperature, tank pressure safety, auto water inlet/drainage

## 9. WARRANTY AND CUSTOMER SUPPORT

For warranty information, technical assistance, or to purchase replacement parts, please contact DC HOUSE customer support. Refer to your purchase documentation or the official DC HOUSE website for contact details.

When contacting support, please have your product model number (ST-90) and purchase date available.

© 2025 DC HOUSE. All rights reserved.