

## WAMPAT W11Q408AA

# WAMPAT 9-Drawer Farmhouse White Dresser Instruction Manual

Model: W11Q408AA

## INTRODUCTION

---

This manual provides detailed instructions for the assembly, operation, and maintenance of your WAMPAT 9-Drawer Farmhouse White Dresser. Please read all instructions carefully before beginning assembly and retain this manual for future reference.

The WAMPAT 9-Drawer Dresser is designed to offer versatile storage solutions for various rooms, including bedrooms, living rooms, hallways, and nurseries. It features a farmhouse-style design with a white finish and rustic handles.

## SAFETY INFORMATION

---

**WARNING: Furniture tipping hazard. Serious or fatal crushing injuries can occur from furniture tip-overs. To help prevent tip-over:**

- Always use the anti-tip accessories provided to secure the dresser to a wall.
- Never allow children to climb or hang on drawers, doors, or shelves.
- Place the heaviest items in the lowest drawers.
- Do not open more than one drawer at a time.

This dresser set is designed with soft, curved edges to help prevent collisions, making it suitable for homes with children and pets. However, proper installation of anti-tip devices is crucial for safety.

# Anti-tipping Furniture Straps

Protect your kids and pets

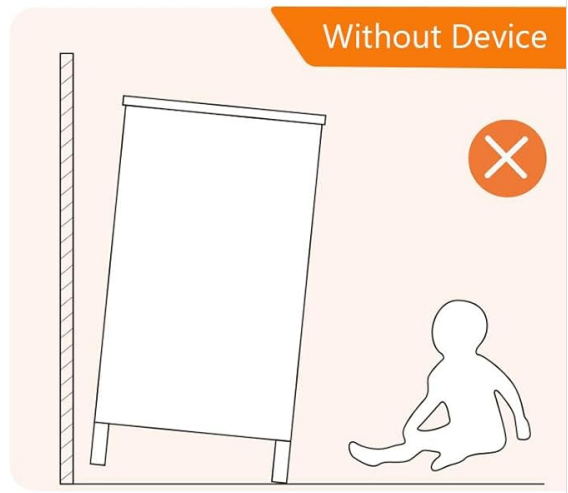
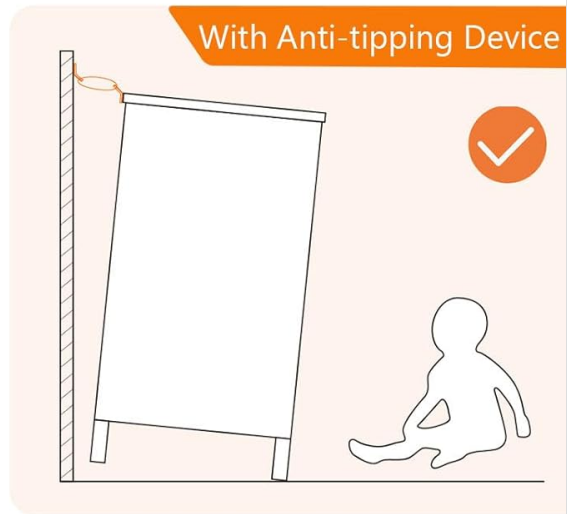


Image: Illustration of anti-tipping furniture straps and their importance for safety.

## PACKAGE CONTENTS

Your WAMPAT 9-Drawer Dresser set is shipped in three separate packages. Please ensure all packages have arrived before beginning assembly.

Upon opening, verify that all parts and hardware listed in the assembly instructions are present and undamaged. If any parts are missing or damaged, please contact customer support.

*Display Personality*

Comes With

**3**

Packages



Image: Overview of the dresser dimensions and packaging information.

## SETUP AND ASSEMBLY INSTRUCTIONS

The WAMPAT 9-Drawer Dresser requires assembly. Detailed assembly instructions and labeled parts are included in the packaging. Follow these steps for proper assembly:

1. **Unpack Components:** Carefully remove all parts from the packaging. Lay them out on a clean, soft surface to prevent scratches.
2. **Identify Parts:** Refer to the included parts list and diagrams to identify each component.
3. **Follow Step-by-Step Guide:** Adhere strictly to the numbered steps in the assembly manual. Do not skip steps.
4. **Secure Connections:** Ensure all screws, bolts, and fasteners are tightened securely. Do not overtighten.
5. **Install Anti-Tip Device:** Once the dresser is fully assembled and in its final position, install the anti-tip accessories to secure it to the wall. This is a critical safety step.

It is recommended to have at least two people for assembly to ensure safety and ease of construction.

## OPERATING INSTRUCTIONS

---

The WAMPAT 9-Drawer Dresser consists of three individual 3-drawer units that can be arranged together or separately. Each drawer is designed for smooth operation and ample storage.

- **Drawer Operation:** Gently pull the metal handles to open drawers. Push firmly to close. The smooth slide rails ensure quiet and easy movement.
- **Storage Capacity:** Each drawer supports up to 30 lbs. The maximum drawer size is 11.7"L x 25.7"W x 6.5"H. The top surface can hold up to 120 lbs.
- **Arrangement:** The modular design allows for flexible placement in your desired room.



Image: Dresser drawers open, showcasing the internal storage space.

## *Smooth Metal Slides*

Soft-close, durable, and quiet.



## *Delicate Metal Handle*

Sleek look, easy to grip.

## *Easy to Clean*

Wipe clean in seconds.



Image: Details of the smooth metal drawer slides, delicate metal handles, and the easy-to-clean surface.

## **MAINTENANCE**

---

To ensure the longevity and appearance of your WAMPAT dresser, follow these maintenance guidelines:

- **Cleaning:** Wipe the surface clean with a soft, damp cloth. Avoid harsh chemicals or abrasive cleaners, as these can damage the finish.
- **Spills:** Promptly wipe up any spills to prevent staining or water damage.
- **Hardware:** Periodically check and tighten all hardware connections to maintain stability.
- **Sunlight Exposure:** Avoid prolonged exposure to direct sunlight to prevent fading or discoloration of the wood finish.

## **TROUBLESHOOTING**

---

If you encounter any issues during assembly or use, please refer to the following common solutions:

- **Missing Parts:** If any parts are missing from your package, double-check all packaging materials. If still missing, contact WAMPAT customer support with your model number and a description of the missing

part.

- **Assembly Difficulties:** Review the assembly instructions carefully. Ensure all parts are oriented correctly. Do not force components together. If a step is unclear, contact customer support for assistance.
- **Drawers Not Sliding Smoothly:** Check that the drawer slides are correctly installed and aligned. Ensure no debris is obstructing the tracks.
- **Dresser Wobbles:** Verify that all fasteners are securely tightened. Ensure the dresser is placed on a level surface. Adjust any leveling feet if present.

## SPECIFICATIONS

---

Feature	Detail
Brand	WAMPAT
Model Name	W11Q408AAX3-AMZ-3
Model Number	W11Q408AA
Material	Engineered Wood (Thickened P2 MDF)
Finish Type	Wood (White Farmhouse Style)
Product Dimensions (Overall)	15.7"D x 92.5"W x 31.5"H
Individual Dresser Dimensions	15.7"L x 31.5"W x 31.5"H (Each of three units)
Number of Drawers	9 (3 per unit)
Max Drawer Size	11.7"L x 25.7"W x 6.5"H
Weight Capacity (Top)	120 lbs
Weight Capacity (Each Drawer)	30 lbs
Item Weight	270 Pounds
Mounting Type	Assembly Required (with Anti-tip accessories)
Certifications	FSC certified wood

## WARRANTY AND SUPPORT

---

WAMPAT is committed to providing high-quality products. If you have any questions, concerns, or require assistance with assembly or parts, please contact WAMPAT customer support. We are dedicated to providing a satisfactory solution for any issues you may encounter.

Please refer to your purchase documentation for specific warranty details and contact information.

