

ANCEL AD610 PRO, BM300 Pro

ANCEL AD610 PRO OBD2 Scanner with ANCEL BM300 Pro Battery Monitor User Manual

INTRODUCTION

This manual provides comprehensive instructions for the ANCEL AD610 PRO OBD2 Scanner and the ANCEL BM300 Pro Battery Monitor. These devices are designed to assist in vehicle diagnostics and battery health monitoring, ensuring optimal performance and safety.

The ANCEL AD610 PRO is an advanced diagnostic tool for automotive systems, focusing on ABS (Anti-lock Braking System) and SRS (Supplemental Restraint System) diagnostics, along with full OBD2 functionalities. The ANCEL BM300 Pro is a sophisticated battery monitor capable of tracking 6V, 12V, and 24V battery health, offering detailed insights into voltage, cranking, and charging systems.



Figure 1: The ANCEL AD610 PRO OBD2 Scanner (bottom) and the ANCEL BM300 Pro Battery Monitor (top) with connection cables and a smartphone displaying the BM300 Pro app interface.

PRODUCT FEATURES

ANCEL AD610 PRO OBD2 Scanner

- **ABS/SRS Diagnosis & Reset:** Quickly detects and resolves issues within the Anti-lock Braking System and Supplemental Restraint System. This includes sensor failures, wiring problems, and ECU malfunctions. After repairs, the system can be reset to clear warning lights and restore full functionality.
- **ABS Bleeding:** Facilitates the process of maintaining correct brake pressure, which enhances overall braking performance. This function is crucial after repairing or replacing ABS components or when replenishing/changing brake fluid.
- **Full OBD2 Functions:** Supports comprehensive OBD2 diagnostics including reading and clearing diagnostic trouble codes (DTCs), viewing live data streams, performing On-Board Monitor Tests, and checking I/M Readiness.
- **I/M Readiness Self-Check:** Allows users to anticipate emission issues and ensure the vehicle is ready for annual inspections by checking the status of various emission-related monitors.
- **ABS SRS Bidirectional Control & Active Test:** Enables direct interaction with the vehicle's ABS/SRS systems for advanced diagnostics and testing. This includes functions like Auto Bleed Test, ABS Manual Control Test, Actuator Test, ABS Motor Test, and ABS Version Test.
- **Lifetime Free Software Updates:** Connects to Wi-Fi for free, lifetime software updates, eliminating the need for USB connections or subscriptions.

All-IN-ONE **ABS SRS** DIAGNOSTICS

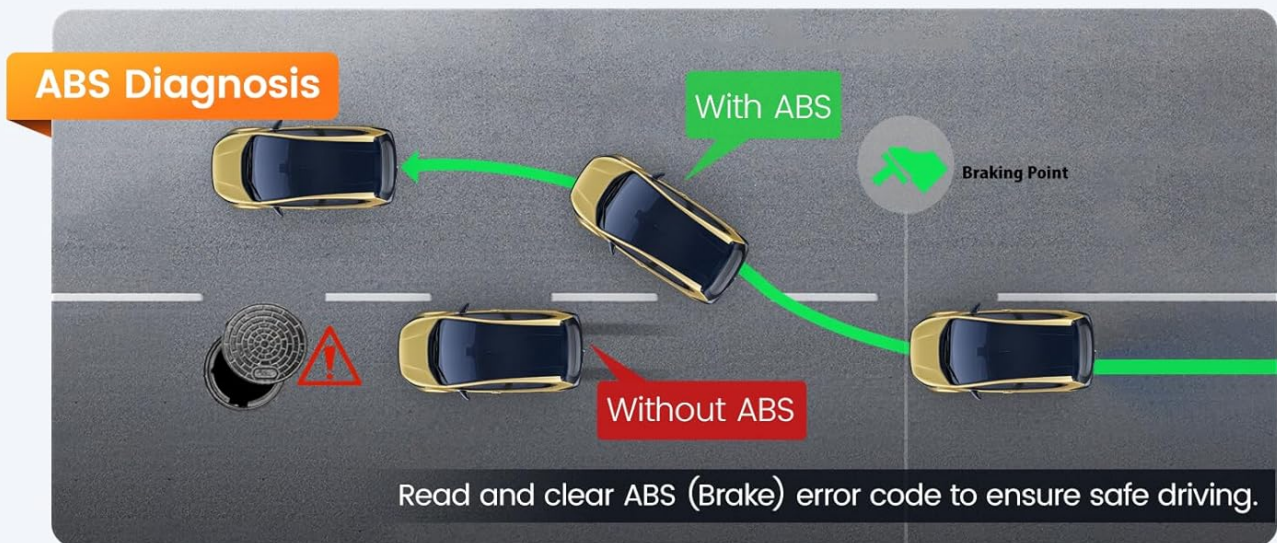


Figure 2: Illustration of ABS and SRS diagnostic capabilities. The top panel shows how ABS helps prevent skidding during braking, while the bottom panel depicts airbag deployment, emphasizing the importance of SRS system integrity.

ABS BLEEDING

Maintaining correct brake pressure, enhances braking performance

1.

ABS components
repaired or replaced



2.

Brake fluid
replenished or changed



3.

Spongy brake pedal or
reduced braking performance



Figure 3: Steps involved in ABS bleeding, including repairing/replacing components, replenishing/changing brake fluid, and the consequence of not performing it (spongy brake pedal).

FULL OBD2 FUNCTIONS



Figure 4: Overview of the ANCEL AD610 PRO's full OBD2 functions, including Live Data, On-Board Monitor Test, I/M Readiness, Read Codes, Clear Codes, Freeze Frame, EVAP Test, DTC Library, Vehicle Info, and Component Test.

I/M READINESS SELF-CHECK

Anticipate emission issues in advance, easily pass the annual inspection



Figure 5: The I/M Readiness self-check screen on the AD610 PRO, showing the status of various emission monitors to help anticipate and resolve issues before annual inspections.

ABS SRS **BIDIRECTIONAL** CONTROL & **ACTIVE TEST**

Enables direct interaction with your vehicle's ABS/SRS for advanced diagnostics and testing.



Figure 6: Diagram illustrating the bidirectional control and active test capabilities of the AD610 PRO for ABS/SRS systems, showing commands sent and data received from the vehicle's ECU.

ANCEL BM300 Pro Battery Monitor

- **Comprehensive Battery Health Monitoring:** Monitors battery voltage, cranking system, charging system, and driving records. It identifies abnormal battery conditions and takes protective measures.
- **Extended Data Storage:** Stores up to 72 days of data, allowing for historical analysis and comparison of battery status over time.
- **Wide Voltage Compatibility:** Supports 6V, 12V, and 24V battery systems.
- **Advanced Bluetooth Connectivity:** Features upgraded Bluetooth 5.3 for stable and quick connections.
- **Durable Design:** IP67 waterproof rating ensures durability in various environments.
- **Multi-Battery Monitoring:** Capable of monitoring up to 4 batteries simultaneously.
- **High Precision Readings:** Achieves over 99.6% precision in voltage readings.

Accurate Voltage Readings

Over 99.6%-Achieve precision levels 0.1%-0.6% higher than comparable products on the market



Figure 7: Close-up view of the ANCEL BM300 Pro's internal components, highlighting its capability for accurate voltage readings with over 99.6% precision.

SETUP GUIDE

Setting up the ANCEL AD610 PRO

1. **Power On:** Connect the AD610 PRO to your vehicle's OBD2 port. The device will power on automatically.
2. **Initial Setup:** Follow the on-screen prompts to select your language and region.
3. **Wi-Fi Connection:** Navigate to the "Settings" menu on the device. Select "Wi-Fi" and connect to an available network. This is essential for software updates.
4. **Software Update:** Once connected to Wi-Fi, go to the "Update" section to check for and install the latest software version.

Setting up the ANCEL BM300 Pro

1. **Download the App:** Scan the QR code provided in the product packaging or visit <http://link.quicklynks.com/bm300.html> to download the "ANCEL BM300 Pro" application from the App Store (iOS) or Google Play Store (Android).
2. **Connect to Battery:** Attach the BM300 Pro's red clamp to the positive (+) terminal of your vehicle's battery and the black clamp to the negative (-) terminal. Ensure a secure connection.
3. **Bluetooth Connection:** Open the "ANCEL BM300 Pro" app on your smartphone. The app will automatically search for and connect to the BM300 Pro device via Bluetooth 5.3. Ensure Bluetooth is enabled on your smartphone.
4. **Device Pairing:** If prompted, confirm the pairing request on your smartphone. Once connected, the app will display real-time battery data.



Figure 8: Visual guide for the ANCEL BM300 Pro setup, showing the steps to download the app and connect the device to the vehicle battery via Bluetooth for real-time monitoring.

OPERATING INSTRUCTIONS

Operating the ANCEL AD610 PRO

1. **Main Menu Navigation:** Use the directional buttons to navigate through the main menu options (e.g., ABS&Airbag, OBDII, SAS, Update). Press "Enter" to select.
2. **Performing Diagnostics:**
 - **ABS/SRS Scan:** Select "ABS&Airbag" from the main menu. The scanner will automatically identify the vehicle and perform a system scan.
 - **Read/Clear Codes:** After a scan, select "Read Codes" to view diagnostic trouble codes. Select "Clear Codes" to erase them after repairs.
 - **Live Data:** Choose "Live Data" to view real-time sensor data in text or graph format.
 - **I/M Readiness:** Select "I/M Readiness" to check the status of emission monitors.
 - **Active Test/Bidirectional Control:** Access these functions under the "Special Functions" or "Active Test" menu within the ABS/SRS section to perform specific component tests or system controls.
3. **ABS Bleeding Procedure:**
 - Ensure the vehicle is safely supported and follow the vehicle manufacturer's specific instructions for brake bleeding.
 - Navigate to the "ABS Bleeding" function within the ABS menu on the AD610 PRO.
 - Follow the on-screen prompts to initiate and complete the bleeding process.

Operating the ANCEL BM300 Pro

1. **Real-time Monitoring:** Once connected, the app will display real-time battery voltage, temperature, and State of Charge (SoC).
2. **Cranking Test:** Select the "Cranking Test" option in the app. Start your vehicle's engine. The app will analyze the cranking voltage and provide a result indicating the health of the starting system.
3. **Charging Test:** Select the "Charging Test" option. Keep the engine running. The app will evaluate the alternator's output and charging system performance.
4. **Driving Records:** The app automatically records driving data, allowing you to review battery performance during vehicle operation.
5. **Historical Data:** Access the "History" tab in the app to view up to 72 days of stored battery data, including voltage graphs and test results.
6. **Multi-Battery View:** If monitoring multiple BM300 Pro devices, use the app's interface to switch between or view all connected batteries simultaneously.

Multi-functional Battery Monitoring

Real-time display battery data help you to find the problem in time and take action



Figure 9: Screenshots from the ANCEL BM300 Pro app demonstrating multi-functional battery monitoring, including Voltage Test, Charging Test, Cranking Test, and options for different vehicle types (Motorcycle, Energy Storage).

MAINTENANCE

- **Cleaning:** Wipe both devices with a soft, damp cloth. Do not use abrasive cleaners or solvents. Ensure the devices are dry before storage.
- **Storage:** Store the AD610 PRO and BM300 Pro in a cool, dry place away from direct sunlight and extreme temperatures.
- **Software Updates (AD610 PRO):** Regularly check for and install software updates via Wi-Fi to ensure optimal performance, compatibility with new vehicle models, and access to new features.
- **Firmware Updates (BM300 Pro):** Check the ANCEL BM300 Pro app for any available firmware updates for the device itself.
- **Cable Care:** Inspect the OBD2 cable and battery clamps regularly for any signs of wear, damage, or corrosion. Replace if necessary.

ANCEL AD610 PRO

- Device Does Not Power On:**
 - Ensure the OBD2 cable is securely connected to the vehicle's OBD2 port.
 - Verify the vehicle's ignition is in the ON position (engine off or running).
 - Check the vehicle's fuse for the OBD2 port.
- Communication Error:**
 - Ensure the vehicle supports the OBD2 protocol.
 - Verify the ignition is ON.
 - Try connecting to a different vehicle to rule out a device issue.
 - Ensure the software is up to date.
- Wi-Fi Connection Issues:**
 - Ensure the Wi-Fi network is active and within range.
 - Verify the Wi-Fi password is entered correctly.
 - Restart the AD610 PRO and try connecting again.

ANCEL BM300 Pro

- No Bluetooth Connection:**
 - Ensure Bluetooth is enabled on your smartphone.
 - Verify the BM300 Pro is correctly connected to the battery terminals.
 - Restart the app and try reconnecting.
 - Ensure the BM300 Pro is within Bluetooth range (approx. 10 meters).
- Inaccurate Readings:**
 - Ensure the battery clamps are clean and have a solid connection to the battery terminals.
 - Verify the battery type selected in the app (if applicable) matches your vehicle's battery.
 - Ensure the BM300 Pro firmware is up to date.
- App Crashing/Freezing:**
 - Close and restart the app.
 - Ensure your smartphone's operating system is up to date.
 - Clear the app's cache (Android) or reinstall the app.

SPECIFICATIONS

ANCEL AD610 PRO

Feature	Specification
Display	Color LCD

Connectivity	OBD2 Cable, Wi-Fi
Update Method	Free Lifetime Wi-Fi Updates
Supported Protocols	OBDII/EOBD protocols
Diagnostic Functions	ABS, SRS, Full OBD2, Active Test, ABS Bleeding

ANCEL BM300 Pro

Feature	Specification
Voltage Range	6V, 12V, 24V
Bluetooth Version	5.3
Data Storage	Up to 72 days
Waterproof Rating	IP67
Simultaneous Monitoring	Up to 4 batteries
Voltage Precision	Over 99.6%

WARRANTY AND SUPPORT

ANCEL products are designed for reliability and performance. The ANCEL AD610 PRO comes with free lifetime software updates, ensuring your device remains current with the latest vehicle data and features.

For technical support, troubleshooting assistance, or warranty inquiries, please contact ANCEL customer service through their official website or the contact information provided in your product packaging. Please have your product model and serial number ready when contacting support.

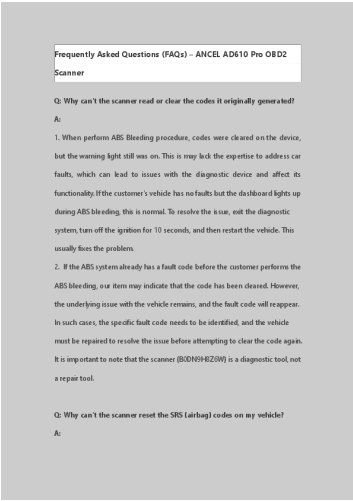
© 2025 ANCEL. All rights reserved.

Documents - ANCEL – AD610 PRO, BM300 Pro



ANCEL AD610 Pro User's Manual: Vehicle Diagnostics Guide

This user manual details the ANCEL AD610 Pro automotive diagnostic scan tool. Learn about setup, vehicle identification, reading/clearing codes, live data, OBDII/EOBD functions, and system settings for efficient vehicle diagnostics.
lang:en score:30 filesize: 5.87 M page_count: 54 document date: 2024-07-23



[pdf] Frequently Asked Questions

admin ANCEL AD610 Pro OBD2 Scanner AnceltechThe item is designed to work with most vehicles supporting OBD II protocols from 1996 onward but it not compatible using OBD1 protocols686383c2ec628anceltech Public Uploads filetxt 20250701 686383c2ec628 AnceltechDownloadThe protocolsANCEL PRO DIY Tools DIAGNOSTIC TOOLS Professional Scan Tool and Code Reader Product Anceltechanceltech 686383c2ec628anceltech ||| ||| Frequently Asked Questions FAQs ANCEL AD610 Pro OBD2 Scanner Q: Why can t the scanner read or clear the codes it originally generated A: 1. When perform ABS Bleeding procedure, codes were cleared on the device, but the warning light still w Frequently Asked Questions FAQs ANCEL AD610 Pro OBD2 Scanner Q: Why can t the scanner read or cle ... ssistance , which are only accessible through the manufacturer s diagnostic tools. As a result, the **AD610 PRO** is unable to diagnose these systems. Q: Why won t my scanner turn on or why is it performi... lang:en score:30 filesize: 52.15 K page_count: 3 document date: 2025-06-30

[pdf] User Manual Specifications Warranty

Trademarks Joe Young ANCEL is the trademark of 673ed27c4bb60 anceltch Public Uploads filetxt 20241121 ||| Trademarks ANCEL is the trademark of OBDSpace Technology Co.,LTD All other marks are trademarks or registered trademarks of their respective holders. Copyright Information 2024 OBDSpace Technology Co.,LTD All rights reserved. Disclaimer The information, specifications and illustrations in this manua... lang:en score:29 filesize: 5.87 M page_count: 54 document date: 2024-07-23