

Manuals+

[Q & A](#) | [Deep Search](#) | [Upload](#)

manuals.plus /

- › [UMIDIGI](#) /
- › [UMIDIGI Note 100 5G Unlocked Cell Phone User Manual](#)

UMIDIGI Note 100 5G

UMIDIGI Note 100 5G User Manual

Model: Note 100 5G | Brand: UMIDIGI

1. INTRODUCTION

Welcome to the UMIDIGI Note 100 5G user manual. This guide provides comprehensive instructions on how to set up, operate, and maintain your new smartphone. The UMIDIGI Note 100 5G is an advanced unlocked cell phone featuring the Android 14 operating system, a powerful 5G processor, high-resolution cameras, and a vibrant 120Hz display, designed to offer a seamless and efficient mobile experience.



Figure 1.1: UMIDIGI Note 100 5G Overview

2. WHAT'S IN THE BOX

Upon unboxing your UMIDIGI Note 100 5G, please ensure all the following items are present:

- UMIDIGI Note 100 5G Phone
- Power Adapter
- USB Cable (Type-C to Type-C)
- SIM Tray Ejector
- Phone Case (pre-installed)
- Protective Film (pre-applied)

120Hz Dynamic Refresh Rate



Figure 2.1: Package Contents

3. SETUP

3.1 Inserting SIM Cards and TF Card

Your UMIDIGI Note 100 5G supports Dual Nano SIM cards or one Nano SIM and one TF (microSD) card for expandable storage up to 1TB. Use the provided SIM tray ejector to open the SIM slot.

1. Locate the SIM tray on the side of the phone.
2. Insert the SIM tray ejector tool into the small hole next to the tray and press firmly until the tray pops out.
3. Carefully pull out the SIM tray.
4. Place your Nano SIM card(s) and/or TF card into the designated slots on the tray, ensuring the gold contacts face downwards.
5. Gently push the tray back into the phone until it clicks into place.



Figure 3.1: SIM/TF Card Slot and Product Information

3.2 Initial Power On and Setup

Press and hold the power button on the side of the phone until the UMIDIGI logo appears. Follow the on-screen prompts to complete the initial setup, including language selection, Wi-Fi connection, Google account login, and security settings.

4. OPERATING INSTRUCTIONS

4.1 Android 14 System

The UMIDIGI Note 100 5G runs on Android 14, offering a smoother, more personalized, and secure user experience. Explore the intuitive interface, enhanced privacy controls, and new customization options.

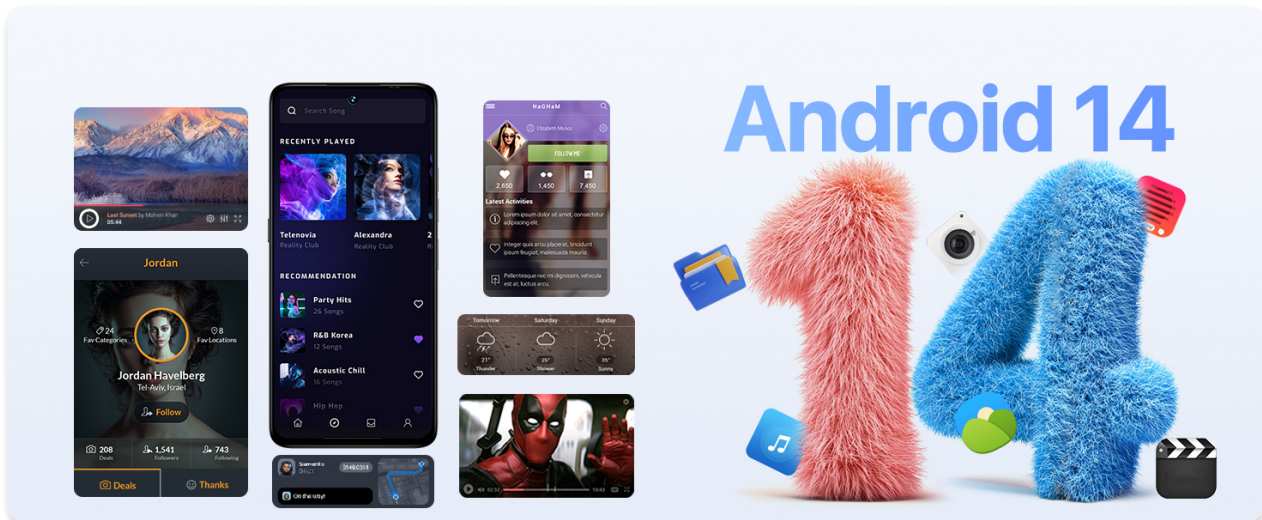


Figure 4.1: Android 14 User Interface

4.2 Memory Extension

The Note 100 5G supports memory extension, allowing you to expand the RAM by utilizing a portion of the internal storage. This can enhance multitasking and overall performance.

1. Go to 'Settings' on your phone and find 'Memory Expansion'.
2. Click 'Set RAM extend Size'.
3. Select the desired RAM expansion size (e.g., 2GB, 4GB, 6GB, 8GB).
4. Confirm the selection and reboot your phone for the changes to take effect.

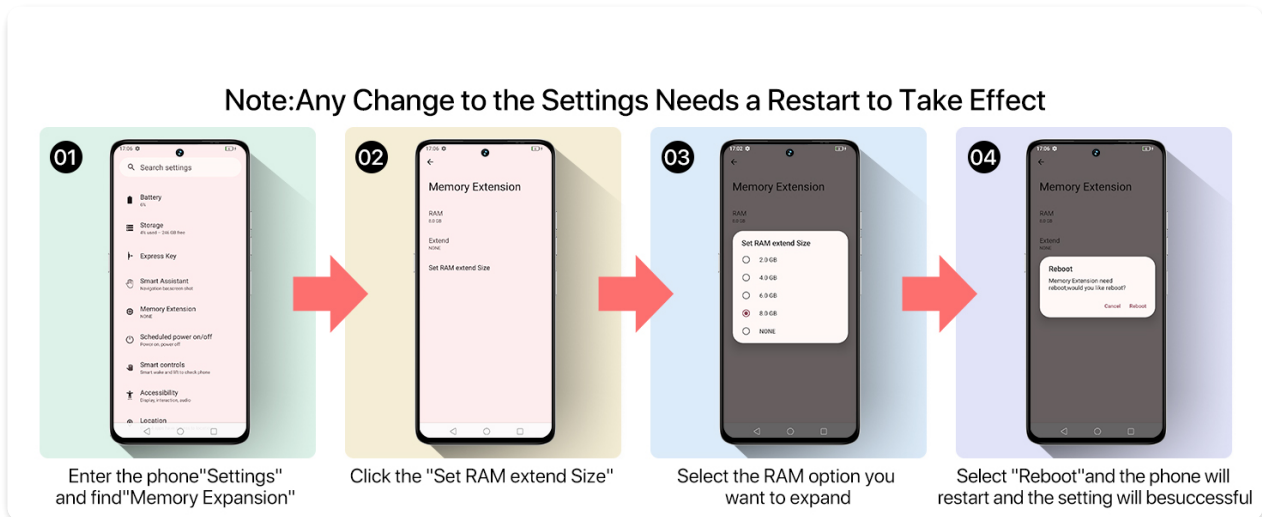


Figure 4.2: Memory Extension Steps

5. CAMERA FEATURES

Capture stunning photos and videos with the UMIDIGI Note 100 5G's versatile camera system:

- **50MP Main Camera:** For high-resolution, detailed photos.
- **16MP Front Camera:** Ensures clear and vibrant selfies.

- **2MP Sensors:** Additional sensors for enhanced depth and macro photography.

The camera app includes various modes to suit your photography needs:

- Portrait Mode
- Panorama Mode
- Night Mode
- Time Lapse Mode
- Macro Mode
- Capture Mode
- Slow Motion Mode



Figure 5.1: Camera Capabilities and Sample Shots

6. DISPLAY FEATURES

Experience immersive visuals on the UMIDIGI Note 100 5G's large and fluid display:

- **6.8-inch HD+ Display:** Provides ample screen real estate for content consumption.

- **120Hz Refresh Rate:** Ensures smooth scrolling, fluid animations, and a responsive gaming experience.
- **20:9 Aspect Ratio:** Maximizes content display while maintaining a comfortable grip.



Figure 6.1: 6.8-inch 120Hz Display

7. PERFORMANCE & STORAGE

The UMIDIGI Note 100 5G is engineered for robust performance and generous storage capacity:

- **UNISOC T765 8-core 5G Processor:** Built on a 6nm process, this processor delivers efficient and powerful performance for demanding applications and 5G connectivity.
- **16GB RAM (8GB physical + 8GB virtual):** Ensures smooth multitasking and app switching.
- **256GB ROM:** Ample internal storage for your apps, photos, videos, and files.
- **1TB TF Card Expandable:** Expand your storage further with a microSD card.

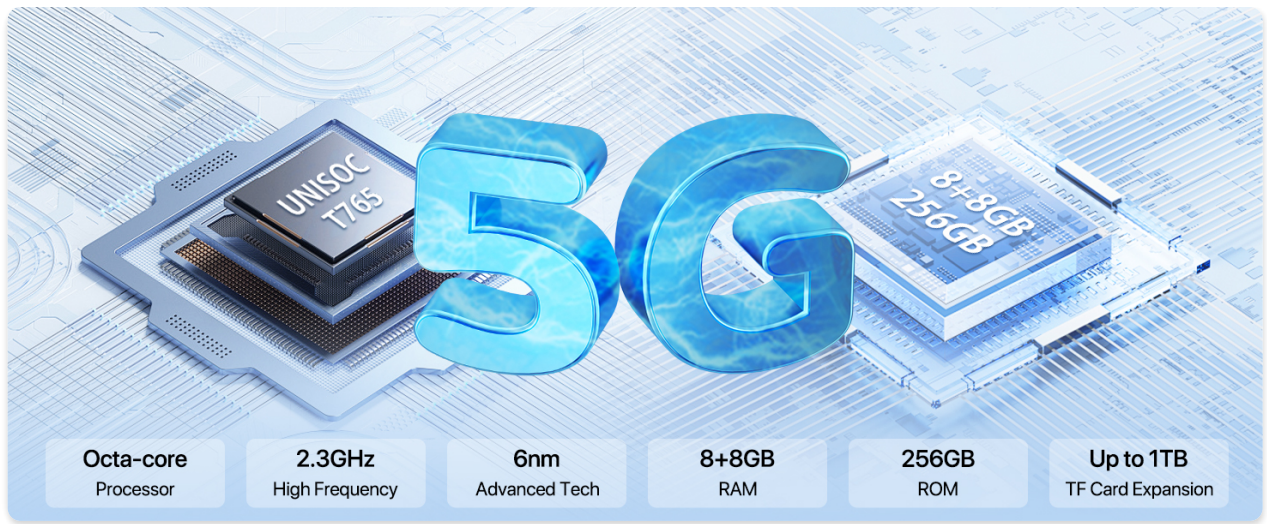


Figure 7.1: Processor and Memory Configuration

8. BATTERY & CHARGING

The UMIDIGI Note 100 5G is equipped with a long-lasting battery and supports fast charging:

- **5000mAh Battery:** Provides extended usage time on a single charge.
- **20W PD Standard Charger:** Enables quick and efficient charging.
- **Type-C Port:** Modern and reversible USB-C for charging and data transfer.
- **OTG Functionality:** Allows the phone to act as a USB host, connecting to external devices.



Figure 8.1: Battery and Charging Features

9. CONNECTIVITY & GPS

Stay connected and navigate with precision:

- **5G Dual SIM:** Supports the latest 5G networks for faster speeds and dual SIM functionality.
- **Bluetooth Connectivity:** For connecting wireless accessories.
- **Wi-Fi:** High-speed wireless internet access.
- **GPS:** Built-in GPS for accurate navigation and location services, supporting GPS, Glonass, Galileo, and Beidou satellite systems.
- **3.5mm Audio Jack:** For traditional wired headphones.

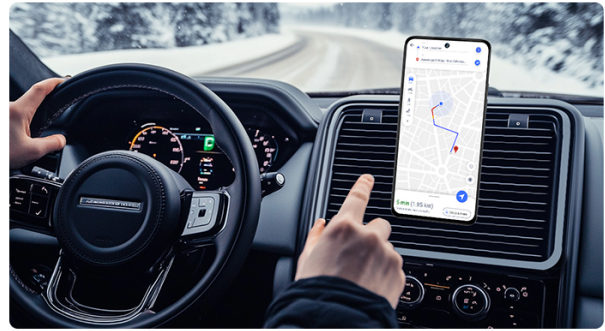


Figure 9.1: GPS Navigation in Use

10. SECURITY FEATURES

The UMIDIGI Note 100 5G offers multiple secure and convenient unlocking methods:

- **AI Face Unlock:** Unlock your phone quickly and securely using facial recognition.
- **Side Fingerprint Unlock:** A conveniently located fingerprint sensor on the side for fast and secure access.
- **Express Key:** A customizable shortcut button for instant access to your favorite apps or features with a double tap or long press.

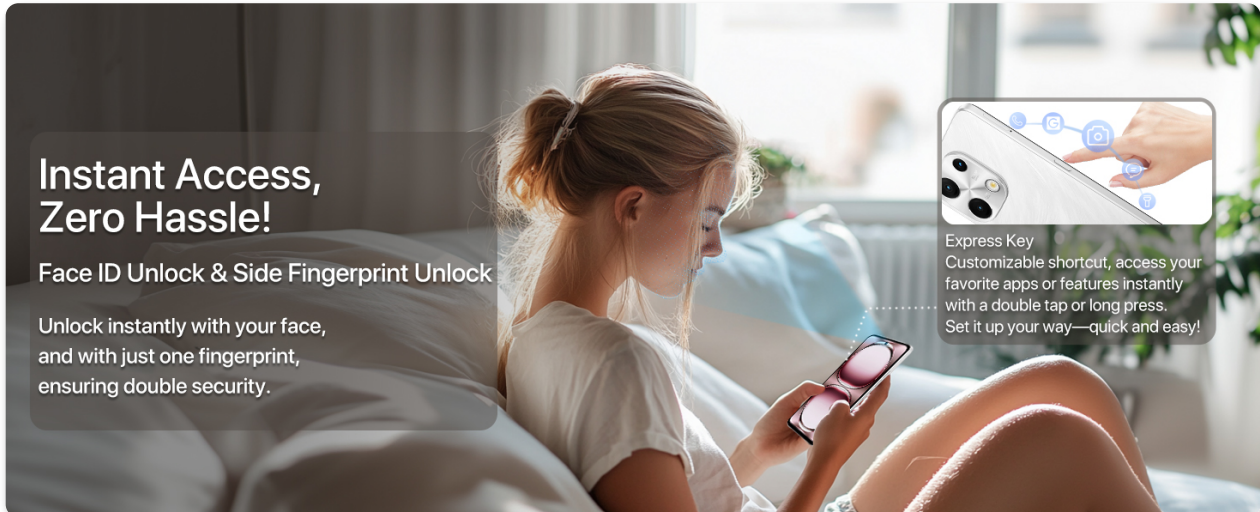


Figure 10.1: Unlocking Methods and Express Key

11. MAINTENANCE

To ensure the longevity and optimal performance of your UMIDIGI Note 100 5G, follow these maintenance tips:

- **Keep it Clean:** Regularly wipe the screen and body with a soft, lint-free cloth. Avoid harsh chemicals.
- **Software Updates:** Install system updates as they become available to benefit from the latest features, security patches, and performance improvements.
- **Battery Care:** Avoid extreme temperatures. Do not let the battery completely drain frequently.

- **Protect from Damage:** Use the provided phone case and screen protector. Avoid dropping the phone or exposing it to water or excessive dust.

12. TROUBLESHOOTING

If you encounter issues with your UMIDIGI Note 100 5G, try the following troubleshooting steps:

Problem	Solution
Phone not turning on	Ensure the battery is charged. Connect to the charger for at least 30 minutes. Press and hold the power button for 10-15 seconds.
Network connectivity issues (e.g., no calls/text, no internet)	Check SIM card insertion. Verify APN settings with your carrier. Ensure your carrier supports unlocked 5G phones and the specific frequency bands (refer to specifications). Restart the phone.
Apps crashing or slow performance	Close background apps. Clear app cache. Utilize the Memory Extension feature (Section 4.2). Restart the phone.
Camera not working	Restart the camera app. Restart the phone. Check app permissions for the camera.
GPS not accurate	Ensure GPS is enabled in settings. Check for clear sky view. Restart the phone.
Battery draining quickly	Reduce screen brightness. Disable unused features (Wi-Fi, Bluetooth, GPS). Close background apps. Check battery usage in settings to identify power-hungry apps.

If the problem persists, please contact customer support as described in Section 14.

13. SPECIFICATIONS

Feature	Detail
Model Name	Note 100 5G
Operating System	Android 14
Processor	UNISOC T765 (8-core, 6nm)
RAM	8 GB (expandable to 16 GB)
Internal Storage (ROM)	256 GB
Expandable Memory	Up to 1 TB (TF Card)
Display Size	6.8 Inches
Display Resolution	2160 x 1080
Refresh Rate	120 Hz

Feature	Detail
Main Camera	50 MP
Front Camera	16 MP
Battery Capacity	5000 mAh
Charging	20W PD Fast Charging
Connectivity	5G, Dual SIM, Bluetooth, Wi-Fi, OTG
Navigation	GPS, Glonass, Galileo, Beidou
Unlock Methods	Fingerprint (Side), AI Face Unlock
Audio Jack	3.5 mm
Dimensions	7.09 x 3.46 x 2.05 inches
Item Weight	14.4 ounces

14. WARRANTY & SUPPORT

UMIDIGI provides a 1-year after-sales service and support for your Note 100 5G. For any questions or assistance, please use the dedicated Service Center app on your phone:

1. Find the "Service Center" app on your phone and open it.
2. Enter the "Customer Service" section.
3. Click on "Questions".
4. Fill in the content according to the prompts and confirm your query.

Alternatively, you can contact UMIDIGI support through the Amazon platform:

- Click the store name "UMIDIGI Smartphone Store" on the item details page and click on "Ask question".
- Go to your Order History, select the applicable order, and click "Contact Seller".



Figure 14.1: Accessing After-Sales Service

© 2025 UMIDIGI. All rights reserved.