



[Manuals.plus](#) /

› [Gavonde](#) /

› Gavonde 4K Digital Camera User Manual

Gavonde Gavonde WG09

Gavonde 4K Digital Camera User Manual

Model: Gavonde WG09

1. INTRODUCTION

Thank you for choosing the Gavonde 4K Digital Camera. This manual provides essential information for setting up, operating, and maintaining your camera to ensure optimal performance and longevity. Please read this manual thoroughly before using the camera.

2. PACKAGE CONTENTS

Verify that all items are present in your package:

- Gavonde 4K Digital Camera (1)
- Combined Tripod Grip & Remote (1)
- 32GB TF Card (1)
- 1300mAh Battery (2)
- Dual Charger (1)
- Type C Cable (1)
- Lens Hood (1)
- Lens Cap (1)
- Shoulder Strap (1)
- Cleaning Cloth (1)
- User Manual (1)



Image: Gavonde 4K Digital Camera and all included accessories, including the camera body, lens hood, 32GB SD card, lens cap, shoulder strap, tripod grip with remote, USB cable, dual battery charger, and two batteries.

3. SETUP

3.1 Charging the Batteries

1. Insert the provided 1300mAh batteries into the dual charger.
2. Connect the Type C cable to the dual charger and a power source (e.g., USB wall adapter, computer USB port).
3. The indicator lights on the charger will show the charging status. Charge until fully charged.

3.2 Inserting the Battery and TF Card

1. Open the battery compartment cover on the bottom of the camera.
2. Insert a charged battery, ensuring correct orientation.
3. Insert the 32GB TF card into the designated slot until it clicks into place.

4. Close the battery compartment cover securely.

3.3 Attaching the Lens Hood and Lens Cap

1. Align the lens hood with the front of the camera lens.
2. Twist the lens hood clockwise until it locks securely into place.
3. Attach the lens cap to protect the lens when not in use.



Image: The Gavonde 4K Digital Camera with the lens hood and lens cap attached, ready for use or storage.

3.4 Attaching the Shoulder Strap

1. Thread the ends of the shoulder strap through the strap loops on both sides of the camera body.
2. Secure the strap ends according to the strap's design to ensure the camera is safely attached.

4. OPERATING THE CAMERA

4.1 Powering On/Off

Press and hold the power button (usually located on the top or side of the camera) to turn the camera on or off. The 3-inch 180° flip screen will display the welcome screen upon startup.

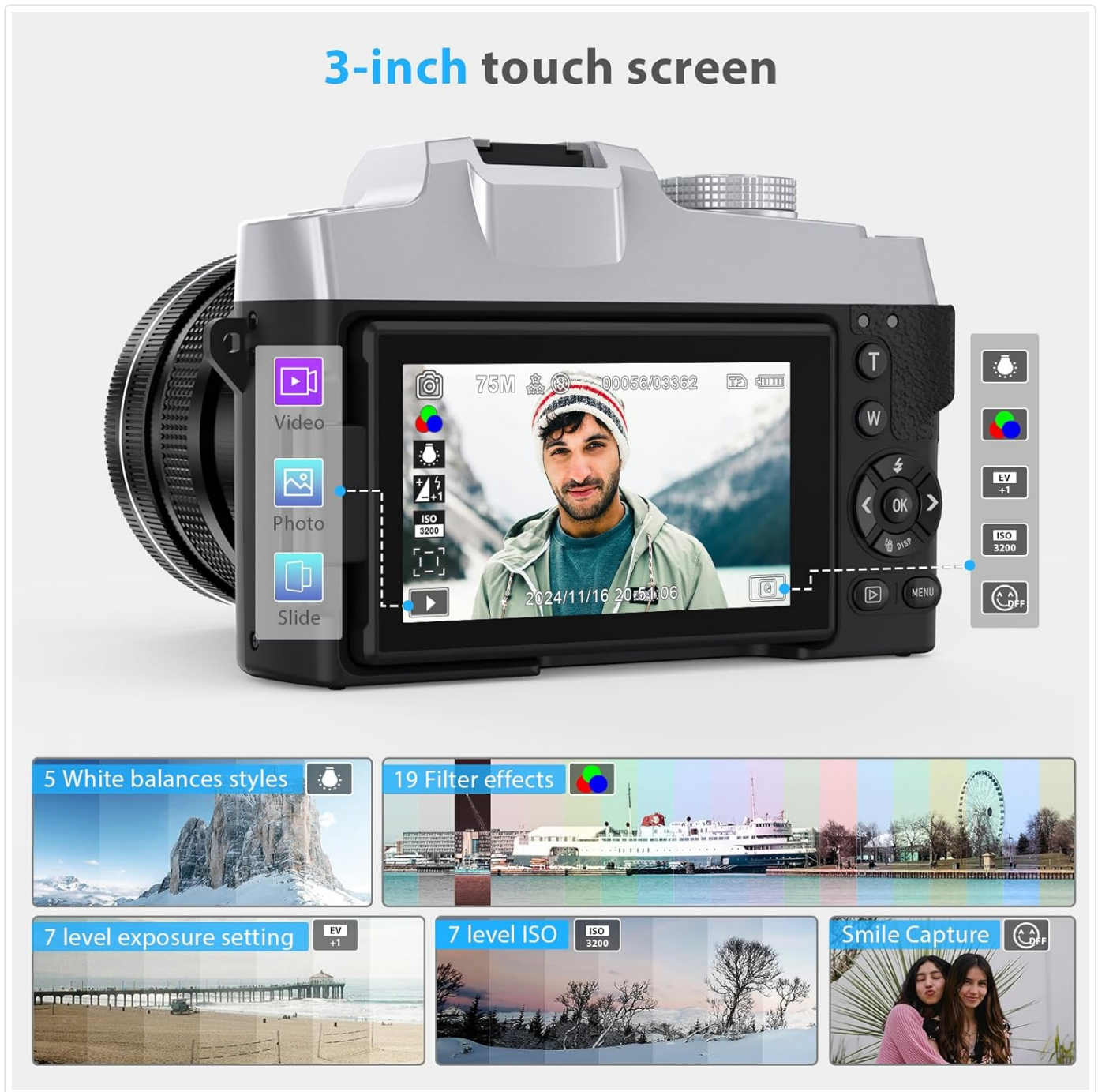


Image: The camera's 3-inch 180° flip screen displaying various menu options and a live view, highlighting its touchscreen functionality.

4.2 Basic Shooting Modes

The camera features an upgraded spin digital dial for easy selection of various shooting modes. Rotate the dial to choose from options such as:

- **Photo Mode:** For capturing still images.
- **Video Mode:** For recording 4K UHD videos.
- **Playback Mode:** For reviewing photos and videos.
- **Timer Mode:** Set a delay before taking a photo (e.g., 5s, 10s, 15s, 30s).
- **Burst Mode:** Capture multiple photos in quick succession.

- **Time-Lapse Mode:** Record a series of images over time to create a time-lapse video.



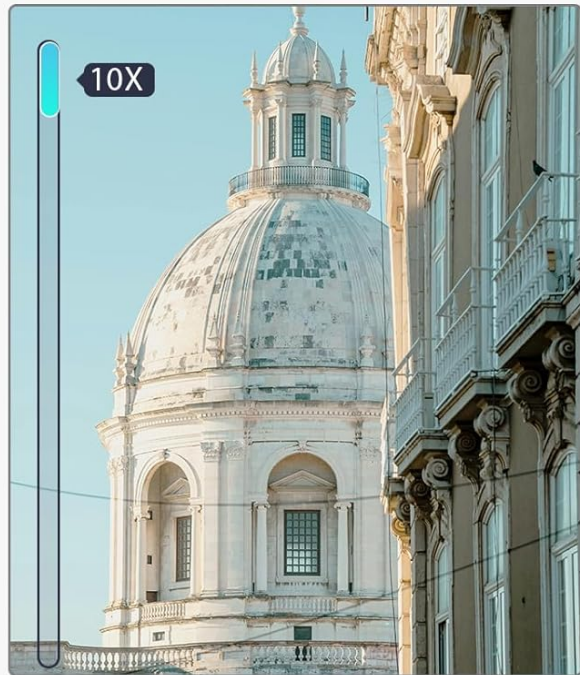
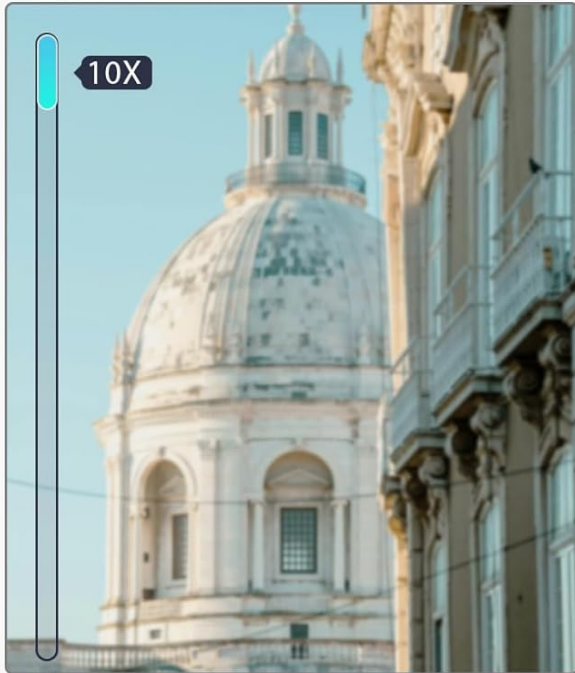
Image: Close-up of the camera's mode dial, showing various icons for different shooting functions and settings.

4.3 Optical Zoom vs. Digital Zoom

The Gavonde camera features 10X optical zoom, which magnifies distant objects by adjusting the lens's mechanical structure, preserving image quality. Digital zoom, while available, may result in a loss of image clarity when magnified.

10x optical zoom

▼ 10X Digital Zoom



▲ 10X Optical Zoom



Image: A visual comparison demonstrating the superior clarity of 10X optical zoom versus 10X digital zoom, with an illustration of the optical lens mechanism.

4.4 Autofocus and Image Resolution

The camera is equipped with an advanced CMOS sensor, capable of capturing stunning 75MP images and recording highly detailed 4K UHD video. The autofocus feature ensures sharp and clear subjects.

4K video and 75M photo pixels

2.7K

4K



AUTOFOCUS

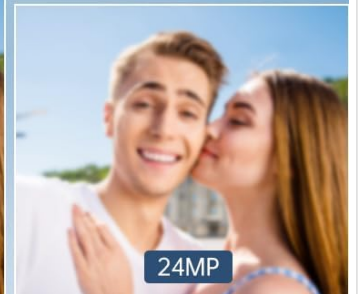
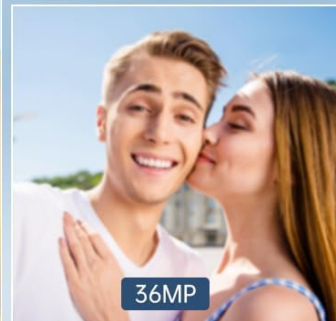
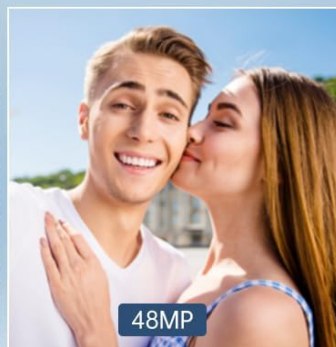
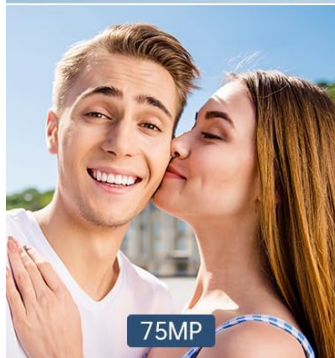


Image: Examples of photo resolutions (75MP, 48MP, 36MP, 24MP) and a visual representation of the camera's autofocus capability.

4.5 Built-in Wi-Fi Function

The camera includes built-in Wi-Fi for wireless transfer of photos and videos to your smartphone or computer. This allows for convenient and quick sharing of your memories. To connect, scan the QR code displayed on the camera screen using a compatible app on your smartphone.

Built-in Wi-Fi Function

Easily transfer photos wirelessly to mobile phones or computers, conveniently and quickly share and save your precious memories



Image: The camera screen displaying Wi-Fi connection details, including the network name and password, with an illustration of wireless transfer to a smartphone. The QR code for the app is visible.

Download the companion app by scanning this QR code: <https://qr24.cn/FypBbk>

4.6 Using as a Webcam

This camera can function as a webcam. Connect it to your computer using the provided USB cable and select "PC Camera" mode. This enables live streaming or video calls on platforms like YouTube, Facebook, and Twitter.

4.7 Fill Light Function

The built-in fill light enhances photo and video quality in low-light or backlit conditions. Activate it via the camera's settings or a dedicated button if available.



Image: A visual demonstration of the camera's fill light feature, showing a comparison of a scene with the fill light off and on, highlighting the improved illumination.

4.8 Using the Combined Tripod Grip & Remote

The included combined tripod grip and remote provides stability and remote control for your camera. It can be used as a handheld grip or unfolded into a mini tripod.

1. Attach the camera to the tripod grip's mounting screw.
2. Tighten the screw to secure the camera.
3. Ensure the camera is switched to the corresponding mode before using the remote control functions (e.g., photo, video, zoom).

Upgraded Spin Digital Dial

Multi-function&Easy to Use for Beginner Photography



Image: A user holding the Gavonde 4K Digital Camera mounted on the combined tripod grip, demonstrating its use for stable shooting and remote control.

Your browser does not support the video tag.

Video: An unboxing and demonstration of the Gavonde 4K Digital Camera, showcasing its components, setup, and various features including the mode dial, zoom, and tripod functionality. The video highlights the ease of use and versatility of the camera and its accessories.

5. SPECIFICATIONS

Feature	Detail
Brand	Gavonde
Model Name	WG09
Product Dimensions	3.22 x 4.44 x 3.22 inches

Feature	Detail
Item Weight	2.51 pounds
Optical Zoom	10x
Maximum Webcam Image Resolution	75 MP
Video Resolution	4K UHD (3840x2160p@30FPS), 2.7K (2688x1520P@30FPS), FHD (1920x1080p@60/30FPS), HD (1280x720p@120/60/30FPS)
Photo Sensor Technology	CMOS
Supported File Format	MP4, JPG
Image Stabilization	Optical
Display Screen	3-inch Ultra HD Touchable Screen (16:9)
Batteries	2 Lithium Polymer batteries required (included)
Wi-Fi	Supported (Name: 4K-WiFi, Password: 12345678)
Self-timer	2/5/10/15/30s
Exposure Compensation	-3.0EV~+3.0EV
White Balance	Auto/Daylight/Cloudy/Tungsten/Fluorescent
ISO	Auto/ISO100/ISO200/ISO400/ISO800/ISO1600/ISO3200/ISO6400



Image: A detailed table outlining the technical specifications of the Gavonde 4K Digital Camera, including optical zoom, resolution, and

6. MAINTENANCE

6.1 Cleaning the Camera

- Use the provided cleaning cloth to gently wipe the camera body and screen.
- For the lens, use a lens cleaning solution and a microfiber cloth specifically designed for optics. Avoid harsh chemicals.
- Ensure the camera is powered off before cleaning.

6.2 Storage

- Store the camera in a cool, dry place away from direct sunlight and extreme temperatures.
- Remove batteries if the camera will not be used for an extended period.
- Always use the lens cap to protect the lens during storage.

7. TROUBLESHOOTING

Problem	Possible Cause / Solution
Camera does not power on.	Battery is not charged or not inserted correctly. Ensure batteries are fully charged and properly seated.
Images are blurry.	Lens is dirty. Clean the lens with the provided cloth. Autofocus may not be engaged; ensure proper focus. Insufficient lighting; use the fill light function.
Cannot connect to Wi-Fi.	Ensure Wi-Fi is enabled on the camera and your smartphone. Verify the correct network name and password. Restart both devices.
TF card error.	TF card may be full, corrupted, or not inserted correctly. Try reinserting the card, formatting it (this will erase all data), or using a different card.
Remote control not working.	Ensure the camera is in the correct mode for remote operation. Check remote battery. Ensure line of sight between remote and camera.

8. WARRANTY & SUPPORT

Gavonde provides high-quality products and professional customer support. If you encounter any issues such as defective or damaged items, items not as described, or missing accessories, please contact our customer support team.

Customer Support: Lifetime 24-hour Responsive Customer Support.



Image: A customer support representative with a headset, symbolizing the 24-hour online support available for Gavonde products.