

## Manuals+

[Q & A](#) | [Deep Search](#) | [Upload](#)

manuals.plus /

- › [Redragon](#) /
- › [Redragon K688 Wireless Mechanical Keyboard User Manual](#)

## Redragon K688

# Redragon K688 Wireless Mechanical Keyboard User Manual

Model: K688WGL-RGB-PRO

## 1. INTRODUCTION

This manual provides detailed instructions for the Redragon K688 Wireless Mechanical Keyboard. Please read this manual thoroughly before using the product to ensure proper operation and to maximize your user experience. This keyboard features a tri-mode connection, gasket-mounted design, hot-swappable switches, and customizable RGB backlighting.



Redragon K688 Wireless Mechanical Keyboard in white, gray, and black, showcasing its full layout with RGB backlighting.

## 2. PACKAGE CONTENTS

Verify that all items are present in your package:

- 1 x Gasket Bluetooth Wireless Mechanical Keyboard
- 1 x USB Cable (Type-C)
- 1 x Keycap Puller
- 1 x English Manual (this document)
- 4 x Extra Gasket Pre-Lubed Linear Switches



Image showing the contents of the Redragon K688 keyboard package: the keyboard, USB cable, extra switches, keycap puller, and user manual.

### 3. PRODUCT FEATURES

---

#### 3.1 Multi-Mode Connectivity

The K688 keyboard supports three connection methods for versatile use across various devices:

- **USB-C Wired Mode:** For a stable, low-latency connection.
- **2.4GHz Wireless Mode:** Utilizes a USB dongle for a reliable wireless connection.
- **Bluetooth 5.0 Mode:** Connects to up to 5 devices simultaneously, allowing easy switching.

# Three Modes In ONE

1 **Type-C**  
Plug and Play

2 **2.4Ghz**  
Driver-free

3 **Bluetooth**  
Steady Flow



Press FN+1/2/3 to switch BT modes  
Press FN+4 to switch to 2.4G mode

An image demonstrating the three connection modes: Type-C wired (1), 2.4GHz wireless with USB dongle (2), and Bluetooth (3), with instructions to switch modes using FN+ combination keys.

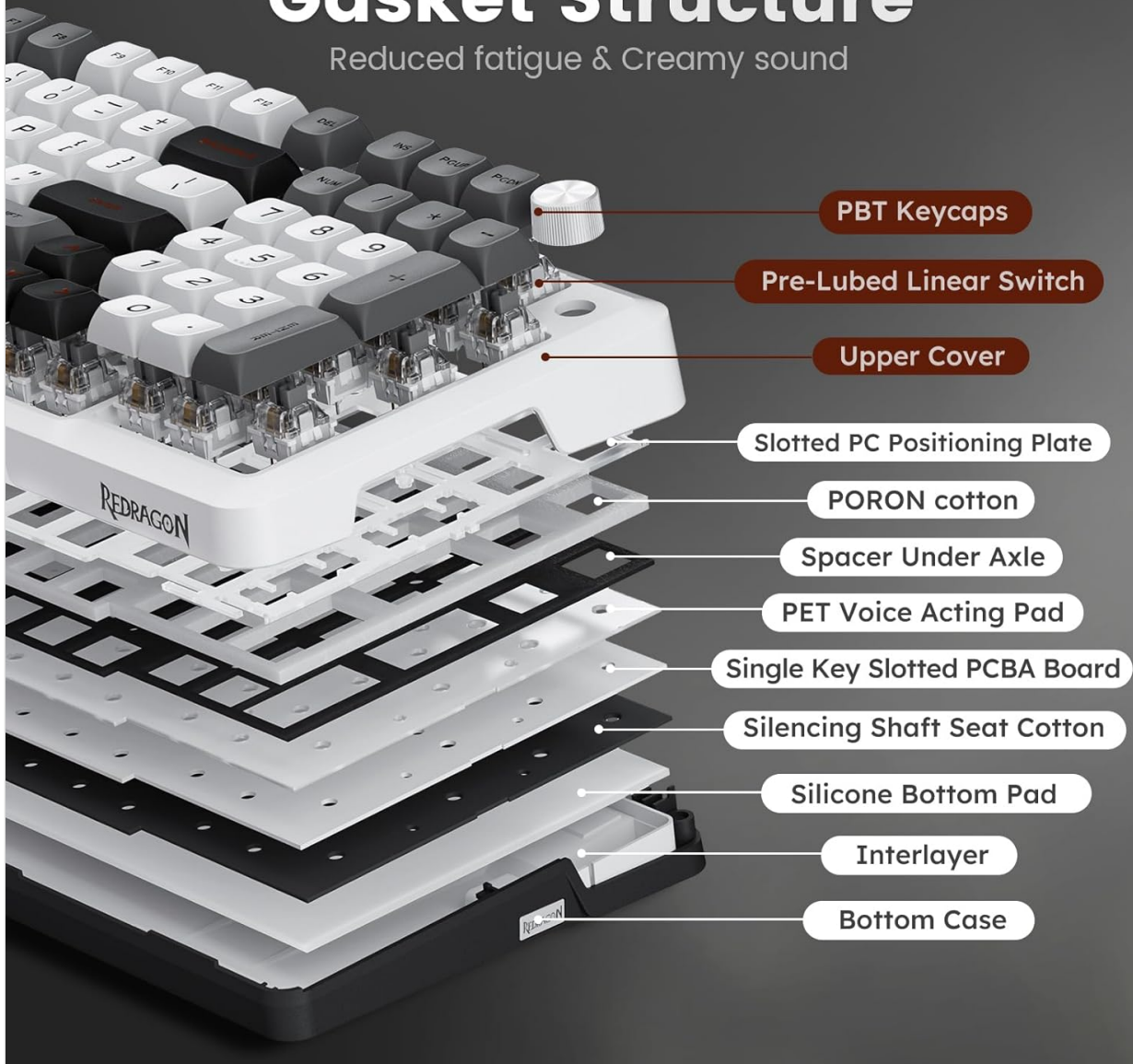
## 3.2 Gasket Structure & Sound Dampening

The keyboard incorporates a gasket-mounted design with multiple layers of sound-dampening materials to provide a softer, more elastic typing feel and reduce cavity noise.

- Extended integrated silicone pad
- PCB single key slotting
- Five layers of filling silencer foam

# Gasket Structure

Reduced fatigue & Creamy sound

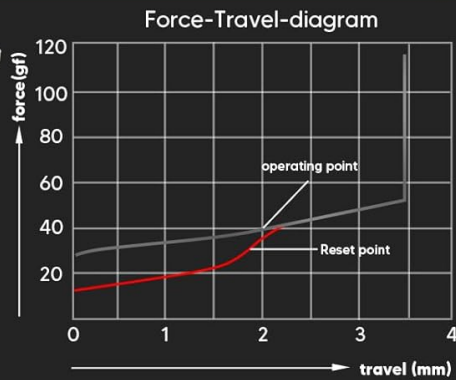
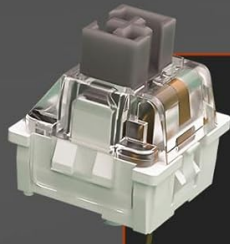


An exploded view diagram illustrating the multi-layered gasket structure of the keyboard, including PBT keycaps, pre-lubed linear switch, upper cover, slotted PC positioning plate, PORON cotton, spacer under axle, PET voice acting pad, single key slotted PCBA board, silencing shaft seat cotton, silicone bottom pad, interlayer, and bottom case.

## 3.3 Hot-Swappable Switches

The K688 features a hot-swappable PCB, compatible with both 3-pin and 5-pin mechanical switches, allowing for easy customization and replacement without soldering. It comes equipped with pre-lubed cream linear switches for a smooth and satisfying typing experience.

# Custom Cream Switch



Total Travel

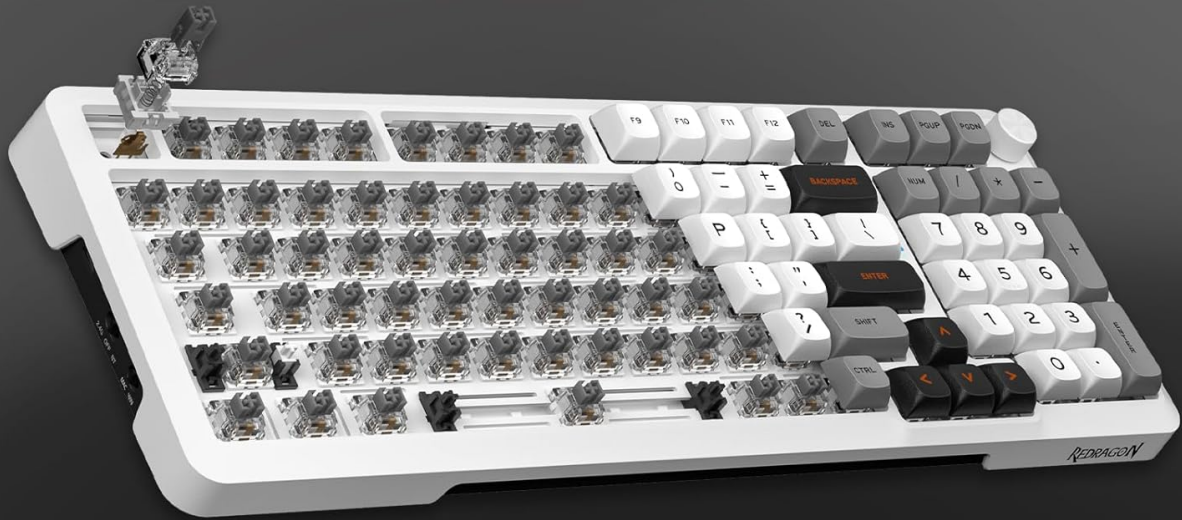
**3.6mm**

Conduction Stroke

**2.0±0.6mm**

Operating Force

**40±10gf**



A close-up of a custom cream switch and its force-travel diagram, indicating a total travel of 3.6mm, conduction stroke of 2.0±0.6mm, and operating force of 40±10gf.

## 3.4 MDA Profile Keycaps

The keyboard is fitted with MDA-profile keycaps, designed to offer a comfortable and ergonomic typing experience.

## 3.5 98-Key Compact Layout

The 98-key layout provides a compact footprint while retaining essential keys, including a numeric keypad and arrow keys, suitable for both gaming and productivity.

# 98 Keys Compact Layout Keyboard

Save space, keep arrow keys and number pad for both gaming and working

# 98 Keys



Comparison of the 98-key compact layout with a standard 104-key layout, illustrating space saving while retaining essential keys like arrow keys and numpad.

## 3.6 Programmable RGB Backlighting

Enjoy 16 RGB lighting effects, 7 single light colors, and 6 brightness levels. The backlighting can be customized further using the dedicated software.

## 3.7 Multi-function Knob

A dedicated knob provides quick control over volume and backlight settings.

## 4. SETUP

### 4.1 Connecting the Keyboard

The K688 keyboard offers three connection modes:

#### 1. Wired Mode (USB-C):

Connect the provided USB-C cable to the keyboard and your computer. The keyboard will automatically switch to wired mode.

## 2. 2.4GHz Wireless Mode:

- Locate the 2.4GHz USB dongle (usually stored in a compartment on the keyboard or included in the package).
- Plug the USB dongle into an available USB port on your computer.
- Set the mode switch on the keyboard to '2.4G'.
- Press **FN + 4** on the keyboard to activate 2.4GHz mode. The keyboard should connect automatically.

## 3. Bluetooth Mode (BT1, BT2, BT3):

- Set the mode switch on the keyboard to 'BT'.
- Press **FN + 1**, **FN + 2**, or **FN + 3** to select a Bluetooth channel. The indicator light for the selected channel will flash, indicating pairing mode.
- On your device (PC, tablet, smartphone), enable Bluetooth and search for 'Redragon K688'.
- Select the keyboard to pair. The indicator light will become solid once connected.
- To switch between paired Bluetooth devices, press **FN + 1/2/3**.



A close-up of the keyboard's side, showing the USB-C port, the 2.4G/OFF/BT mode switch, and the 2.4GHz wireless dongle.

## 4.2 Charging the Keyboard

The keyboard is equipped with a 4000mAh battery. To charge, connect the USB-C cable to the keyboard and a power source (e.g., computer USB port, USB wall adapter). The indicator light will show charging status.

### Ultra Long-Lasting Battery Life

# 4000mAh



#### Endurance Test

Backlit-off  200hrs

Backlit-on  30hrs

Illustration of the keyboard's battery life: up to 200 hours with backlight off and 30 hours with backlight on, powered by a 4000mAh battery.

## 5. OPERATING INSTRUCTIONS

### 5.1 Multi-function Knob

The knob located on the top right of the keyboard provides quick access to media and backlight controls:

- **Rotate Clockwise:** Increase Volume
- **Rotate Counter-clockwise:** Decrease Volume
- **Press:** Mute/Unmute Audio
- **FN + Rotate Knob:** Adjust Backlight Brightness
- **FN + Press Knob:** Cycle through Backlight Modes

## Knob Control Button



A close-up of the multi-function knob, detailing its controls: clockwise for Volume+, counterclockwise for Volume-, press for Sound on/off, and FN+Knob to adjust backlight.

### 5.2 RGB Backlight Control

The keyboard offers various RGB lighting effects and customization options:

- **FN + Press Knob:** Cycle through 16 RGB lighting effects.
- **FN + Rotate Knob:** Adjust backlight brightness (6 levels).
- Additional customization is available through the Redragon software.

## Programmable RGB Backlit

16 RGB Modes, 7 Single Light, 6 Brightness  
Support music rhythm Light via software



Two views of the keyboard demonstrating programmable RGB backlighting with 16 RGB modes, 7 single light colors, and 6 brightness levels, supporting music rhythm light effects via software.

### 5.3 Battery Level Check

To check the current battery level, press **FN + DEL**. The number keys (1-0) will light up to indicate the battery percentage (e.g., keys 1-3 lit for 30%, keys 1-0 lit for 100%).

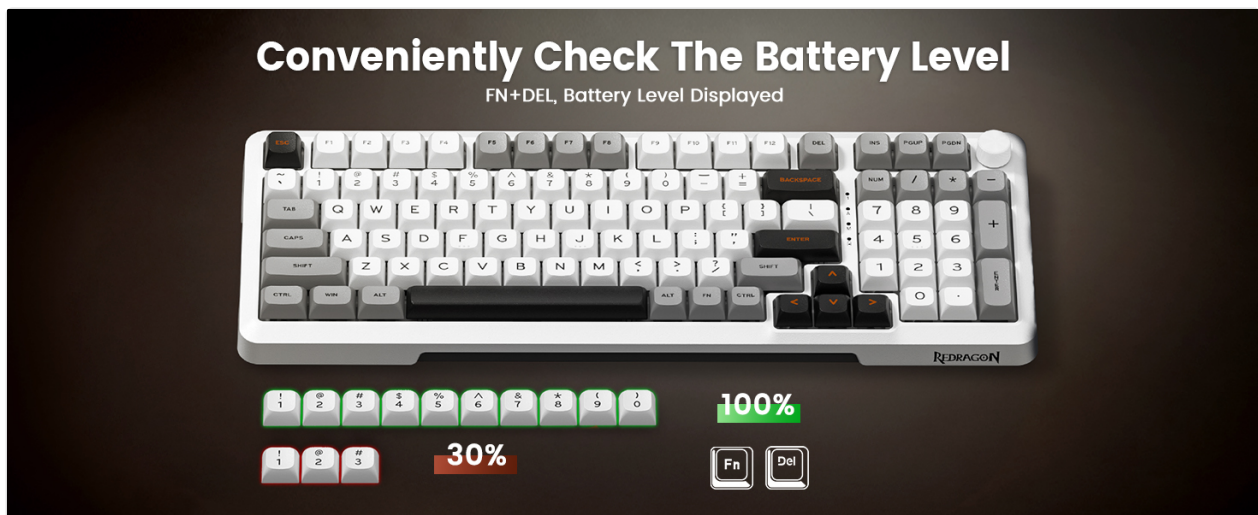


Diagram showing how to check battery level by pressing FN+DEL, with keys 1-0 indicating percentage (e.g., 1-3 for 30%, 1-0 for 100%).

### 5.4 Software Customization

The Redragon software allows for advanced customization of key functions, macro recording, and RGB lighting effects. Please note that the software currently supports Windows operating systems and functions only in wired or 2.4GHz wireless modes.

# Support Software Customization



Note: The driver currently only supports Windows and only supports 2.4G/wired mode

Screenshot of the Redragon software interface, showing options for light effects, macro customization, and key assignment.  
Note: Driver currently supports Windows and 2.4G/wired mode only.

## 6. MAINTENANCE

To ensure the longevity and optimal performance of your Redragon K688 keyboard, follow these maintenance guidelines:

- **Cleaning:** Regularly clean the keyboard with a soft, dry cloth. For deeper cleaning, use a keycap puller to remove keycaps and a brush or compressed air to remove dust and debris from between the switches.
- **Switch Replacement:** Utilize the provided keycap and switch puller to carefully remove and replace switches. Ensure the new switch is aligned correctly before pressing it into place.
- **Storage:** Store the keyboard in a cool, dry place away from direct sunlight and extreme temperatures.
- **Avoid Liquids:** Do not expose the keyboard to liquids. In case of accidental spills, immediately disconnect the keyboard and allow it to dry completely before reuse.

## 7. TROUBLESHOOTING

If you encounter issues with your Redragon K688 keyboard, refer to the following common solutions:

- **Keyboard Not Responding:**

- a. Ensure the keyboard is charged. Connect it via USB-C cable.
- b. Check the connection mode switch (Wired, 2.4G, BT) and ensure it matches your intended connection.
- c. For 2.4GHz, ensure the USB dongle is securely plugged in and **FN + 4** is pressed.
- d. For Bluetooth, ensure the correct channel (FN+1/2/3) is selected and the device is paired. Try re-pairing if necessary.
- e. Try connecting the keyboard to a different USB port or computer to rule out port/computer issues.

- **Keys Not Working:**

- a. If specific keys are not working, they might be faulty or improperly seated. Use the switch puller to remove and re-insert the switch, or replace it with one of the spare switches provided.
- b. Ensure no debris is lodged under the keycap or switch.

- **Backlight Issues:**

- a. Adjust brightness using **FN + Rotate Knob**.
- b. Cycle through modes using **FN + Press Knob**.
- c. If using software, ensure the software settings are correctly applied and the keyboard is in a compatible mode (wired or 2.4GHz).

- **Bluetooth Disconnection:**

- a. Ensure the keyboard battery is not low.
- b. Move the keyboard closer to the connected device to reduce interference.
- c. Re-pair the keyboard with your device.

## 8. SPECIFICATIONS

Feature	Detail
Model Number	K688WGL-RGB-PRO
Connectivity Technology	USB-C Wired, 2.4GHz Wireless, Bluetooth 5.0
Keyboard Layout	98 Keys (Compact)
Switch Type	Pre-Lubed Linear Switches (Hot-Swappable 3/5-pin)
Keycap Profile	MDA-Profile
Backlighting	Programmable RGB (16 modes, 7 single colors, 6 brightness levels)
Battery Capacity	4000mAh Lithium Ion (included)
Compatible Devices	PC, Laptop, Gaming Console (Xbox, PS4, PS5), Smartphone, Tablet
Compatible Systems	Windows, Android, Mac (Software supports Windows only for wired/2.4G)
Item Weight	2.55 pounds
Package Dimensions	16.61 x 7.76 x 2.56 inches

## 9. WARRANTY AND SUPPORT

Redragon products are designed for reliability and performance. For warranty information, please refer to the warranty card included in your product packaging or visit the official Redragon website. For technical support or further assistance, please contact Redragon customer service through their official channels.

You can find more information and support resources on the [Redragon Store on Amazon](#).