

Manuals+

[Q & A](#) | [Deep Search](#) | [Upload](#)

manuals.plus /

› [AMAZTIM](#) /

› [AMAZTIM M3 Smart Watch Instruction Manual](#)

AMAZTIM M3

AMAZTIM M3 Smart Watch Instruction Manual

Model: M3

INTRODUCTION

This manual provides detailed instructions for the setup, operation, and maintenance of your AMAZTIM M3 Smart Watch. Designed for durability and extensive functionality, the M3 features a 2-inch AMOLED display, military-grade construction, and comprehensive health and fitness tracking capabilities. Please read this manual thoroughly to ensure optimal performance and longevity of your device.

WHAT'S IN THE BOX

Upon opening your AMAZTIM M3 Smart Watch package, you should find the following items:

- 1x AMAZTIM M3 Smart Watch
- 1x Watch Band
- 1x Charging Cable
- 1x User Manual

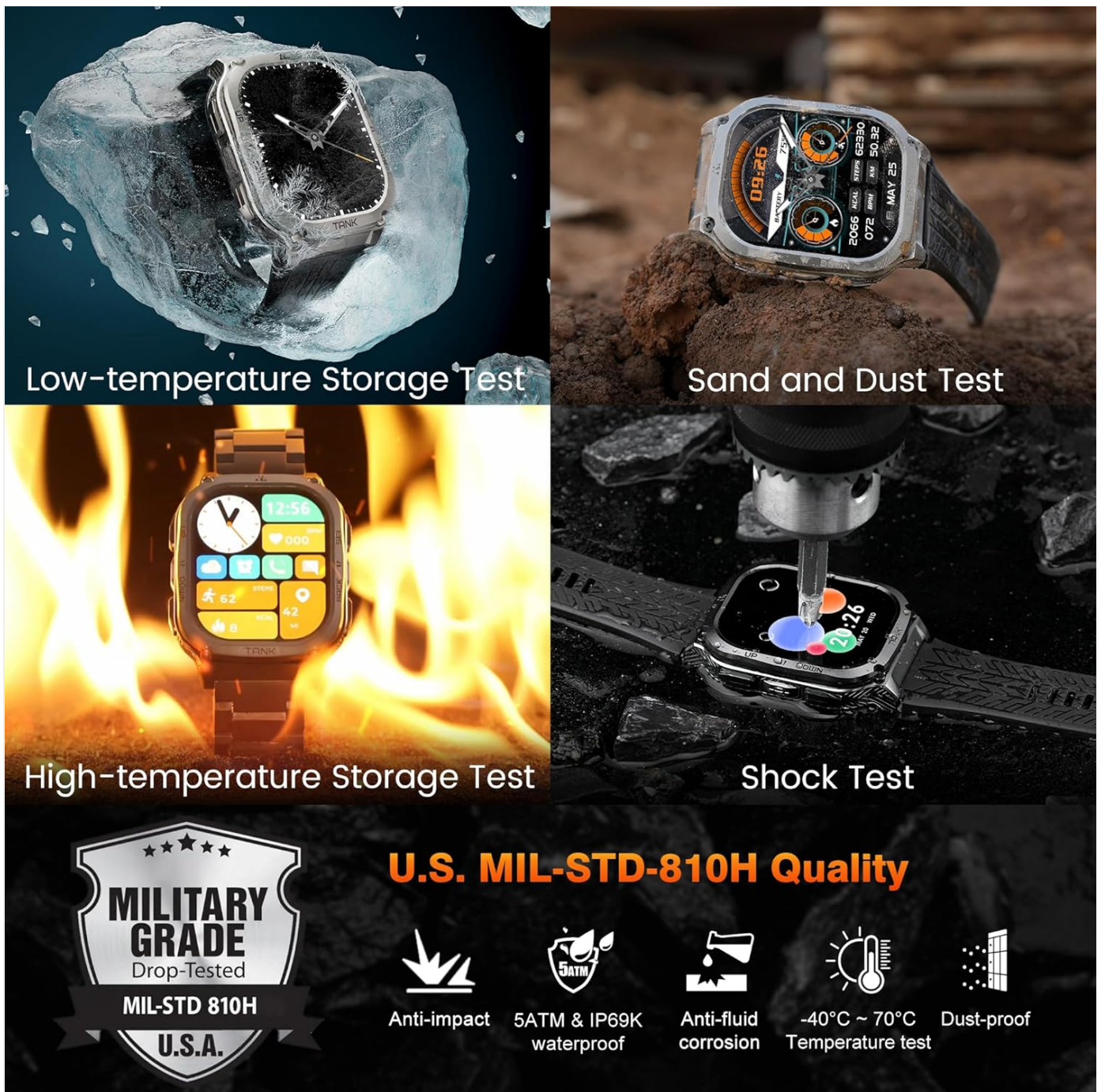


Image: Contents of the AMAZTIM M3 Smart Watch package, including the watch, band, charging cable, and user manual.

SETUP INSTRUCTIONS

1. Charging the Smart Watch

Before initial use, fully charge your AMAZTIM M3 Smart Watch. Connect the provided charging cable to the charging points on the back of the watch and to a USB power source. The watch display will indicate charging status.

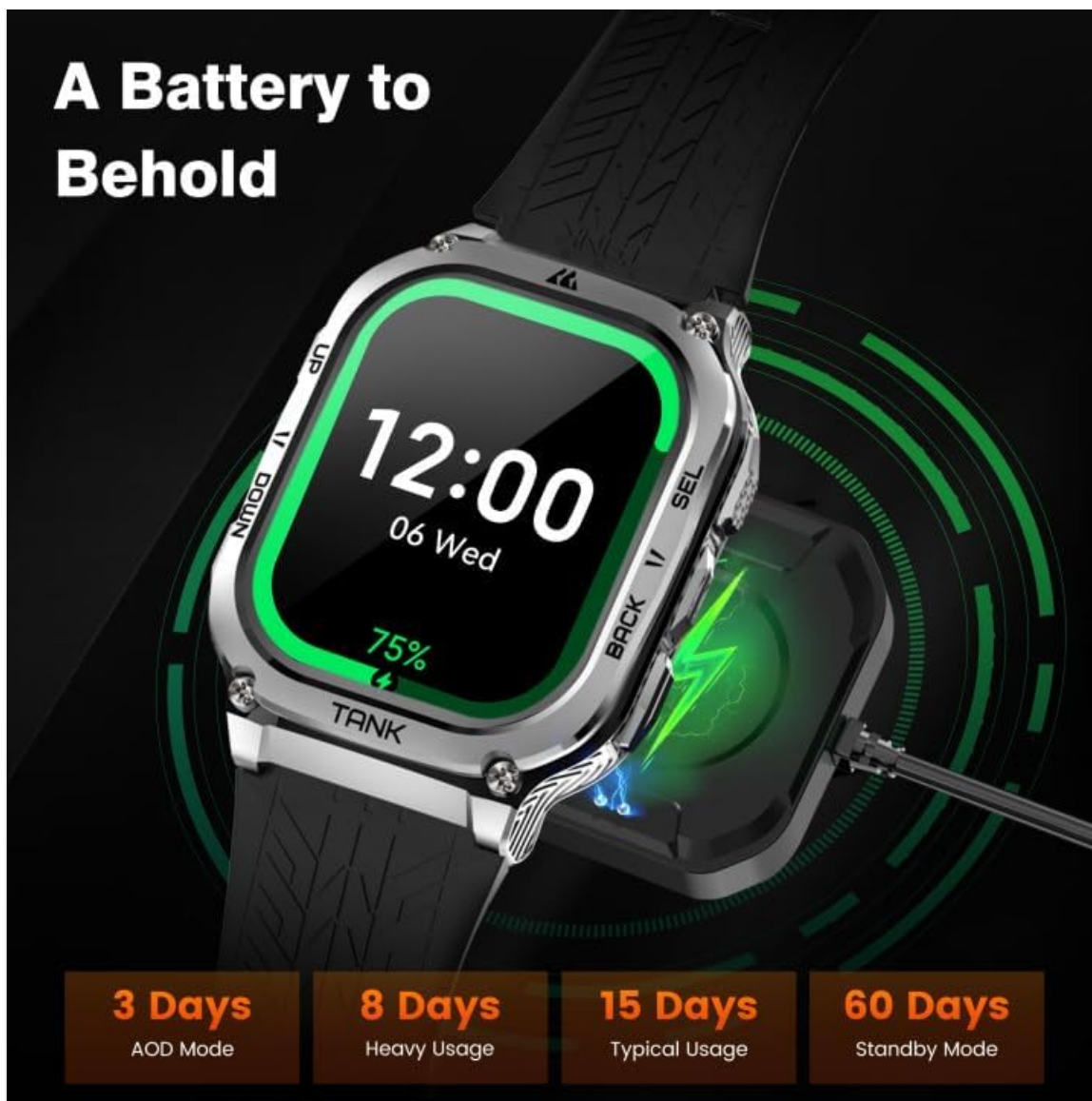


Image: The AMAZTIM M3 Smart Watch connected to its magnetic charging cable.

2. Installing the Watch Band

Attach the watch band by aligning the pins with the holes on the watch body and sliding them into place. Ensure both sides are securely fastened.

3. Pairing with Your Smartphone

The AMAZTIM M3 Smart Watch is compatible with both Android and iOS devices. Follow these steps to pair your watch:

1. Download the 'KOSPET FIT' app from the Google Play Store or Apple App Store.
2. Ensure Bluetooth is enabled on your smartphone.
3. Open the 'KOSPET FIT' app and navigate to the 'Device' section.
4. Tap 'Add a new device' and select your AMAZTIM M3 from the list.
5. Confirm the pairing request on both your phone and the watch.
6. Grant necessary permissions for notifications and other features within the app settings.

How to connect smart watch?

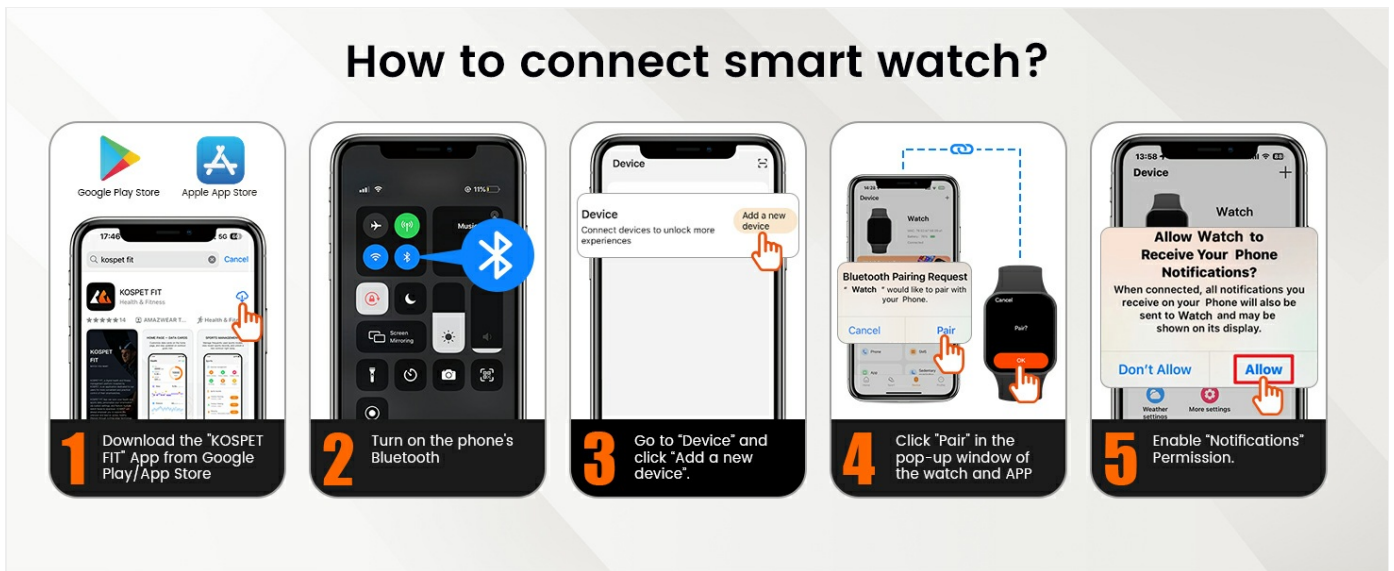


Image: Visual guide demonstrating the pairing process of the smart watch with a smartphone via the KOSPET FIT app.

Video: How to set up the AMAZTIM Tank M3 Smartwatch.

Your browser does not support the video tag.

This video provides a general overview of the AMAZTIM Tank M3 Smartwatch, including unboxing, band attachment, and initial pairing with a smartphone. It highlights the ease of setup and various customizable watch faces.

OPERATING INSTRUCTIONS

Navigation

The AMAZTIM M3 features a 2.0" Ultra Large AMOLED display with a responsive touchscreen. Swipe left, right, up, or down to navigate through menus and access different functions. Physical buttons on the side provide additional control for quick access to features and returning to the home screen.



2" Ultra Large AMOLED Always On Display

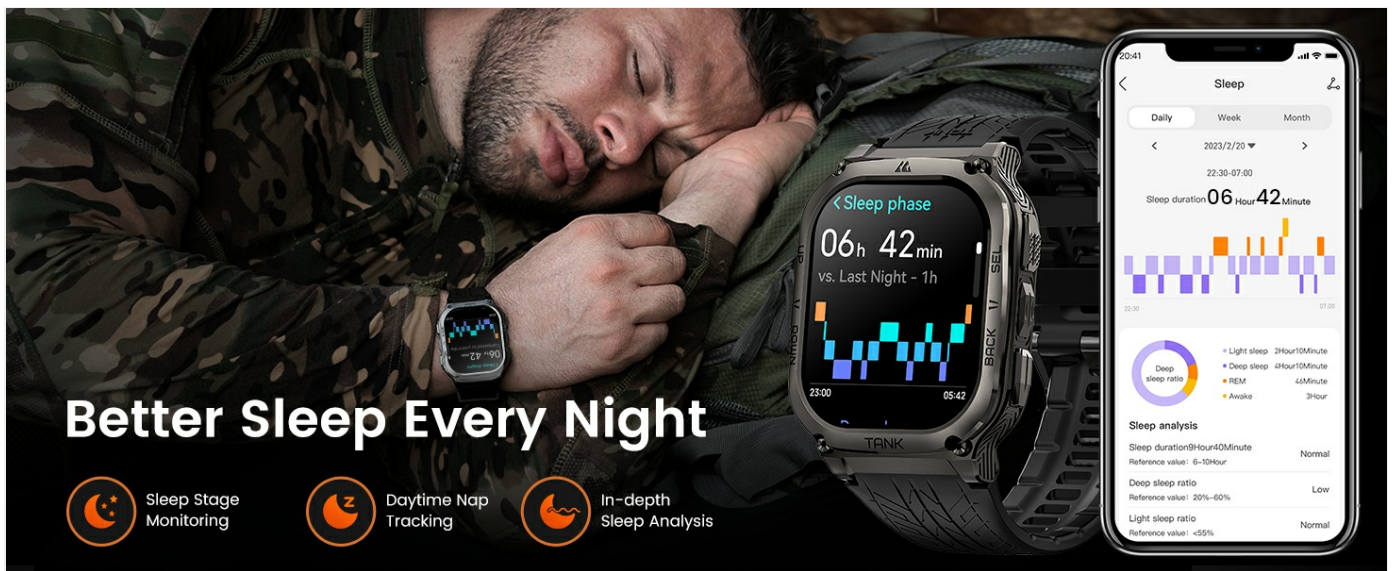
2.0" HD AMOLED Display **451** Pixels Per inch **410*502** Pixel Resolutions **1000nit** Peak Brightness



Image: The 2.0-inch AMOLED display of the AMAZTIM M3 Smart Watch, showcasing its vibrant colors and clarity.

Making and Receiving Calls

Once paired with your smartphone, you can answer and make calls directly from your AMAZTIM M3 Smart Watch. Access the call function from the main menu. The watch also supports AI Voice Assistant for hands-free commands, including initiating calls.



Better Sleep Every Night

- Sleep Stage Monitoring
- Daytime Nap Tracking
- In-depth Sleep Analysis

Image: The smart watch showing options for Bluetooth calls and interacting with the powerful voice assistant.

Message Notifications

Receive and read text messages and social media notifications directly on your watch. Ensure the 'KOSPET FIT' app is running in the background and notification permissions are granted for desired applications on your phone.

How to receive message or APP notification? **Android**

1. Ensure the "KOSPET FIT" app remains active (Android users need to add the app to the whitelist in Settings).
2. Disable "Do Not Disturb" & "Low Power Mode".
3. Message sync won't occur if the app logged into other devices or phones in the chat interface.

1 Connect watch & phone via Bluetooth.

2 Go to "Device" and click to open "SMS Reminder".

3 Go to "Device" and click the NOTE to allow "KOSPET FIT" to access "Notifications".

4 Go to "Device" and click "App Reminder", then enable for desired apps.

Image: Step-by-step instructions for enabling message and app notifications on iOS devices.

Size & Packaging Included

269mm

Image: Step-by-step instructions for enabling message and app notifications on Android devices.

HEALTH MONITORING

The AMAZTIM M3 Smart Watch offers comprehensive health data real-time monitoring functions. Access these features through the watch interface or the 'KOSPET FIT' app.

- **Heart Rate Monitor:** Tracks your heart rate 24/7.
- **Blood Oxygen Monitor:** Measures your real-time blood oxygen levels.
- **Sleep Tracking:** Monitors all-day sleep patterns, including sleep stages and daytime naps, providing in-depth sleep analysis.
- **Pedometer:** Keeps track of steps taken and calories burned throughout the day.

Multiple Health Monitoring

Heart rate monitor

Blood oxygen monitor

Breath training

Smart sleep tracking

Image: The AMAZTIM M3 Smart Watch displaying multiple health monitoring metrics, including heart rate, blood oxygen, breath training, and smart sleep tracking.

Prepare For Takeoff

↓ 50%

Power Consumption Reduction

↑ 100%

Storage Capacity

↑ 200%

Processing Speed



Image: The smart watch tracking sleep stages, daytime naps, and providing in-depth sleep analysis.

SPORTS MODES

The AMAZTIM M3 supports up to 170 sports modes and features 6 Intelligent Sports Recognition functions. It accurately collects data for every workout, ensuring precise tracking of your physical activity.

- **Intelligent Recognition:** Automatically detects and tracks 6 common sports activities.
- **170+ Sports Modes:** Choose from a wide variety of sports for tailored tracking.
- **Data Tracking:** Monitors steps, calories, distance, heart rate zones, and more during workouts.

170 Sports Modes

- 9680 STEPS
- 103 BPM
- 570 KCAL
- 2.9 KM

Intelligent Recognition of 6 Sports

- Stationary State
- Walking
- Running
- Cycling
- Elliptical Trainer
- Rowing Machine

Image: The AMAZTIM M3 Smart Watch displaying various sports modes and intelligent recognition for activities like walking, running, cycling, and more.

How to receive message or APP notification? **ios**

1. Ensure the "KOSPET FIT" app remains active (Android users need to add the app to the whitelist in Settings).
2. Disable "Do Not Disturb" & "Low Power Mode".
3. Message sync won't occur if the app logged into other devices or phones in the chat interface.

- 1** Connect watch & phone via Bluetooth.
- 2** Go to "Device" and click to open "SMS".
- 3** Go to "Device" and click "App", then enable for desired apps.
- 4** Go to your phone's "Settings" to allow "KOSPET FIT" to access "Notifications".

Image: An illustration highlighting the 170+ sports modes and intelligent recognition for 6 sports, including still, walking, running, cycling, elliptical trainer, and rowing machine.

BATTERY LIFE

The AMAZTIM M3 is equipped with a 480mAh pure cobalt-based battery, offering extended usage times. An industry-breaking super power-saving AI algorithm minimizes power consumption.

- **Normal Use:** Up to 2 weeks of battery life.
- **Power Saving Mode:** Up to 60+ days of continuous use for sports and health monitoring.
- **Always On Display (AOD) Mode:** Approximately 3 days.

5ATM

**5ATM & IP69K
(Dive-proof) Waterproof**

5ATM&IP69K Swim Handwashing Rain

Image: The smart watch showing its battery life capabilities under different usage scenarios, including AOD mode, heavy usage, typical usage, and standby mode.

Video: Why THIS Smart Watch with a 60 Day Battery!

Your browser does not support the video tag.

This video highlights the impressive 60-day battery life of the AMAZTIM M3 Smart Watch, showcasing its endurance for various activities.

DURABILITY AND WATERPROOFING

The AMAZTIM M3 is built to military standards, featuring a full-metal unibody and Corning Gorilla screen (Mohs hardness up to 9H). It has successfully passed 15 military toughness tests (MIL-STD-810H), including salt spray, rain, and impact.

- **Military-Grade Quality:** Indestructible and highly durable, designed to withstand harsh environments.
- **5ATM Waterproof:** Can be immersed in up to 50 meters of water, suitable for swimming and diving.
- **Damage Resistant:** Tested against extreme conditions like high/low temperatures, sand, dust, and shock.



Low-temperature Storage Test



Sand and Dust Test



High-temperature Storage Test



Shock Test



U.S. MIL-STD-810H Quality



Anti-impact



5ATM & IP69K
waterproof



Anti-fluid
corrosion



-40°C ~ 70°C
Temperature test



Dust-proof

Image: The AMAZTIM M3 Smart Watch undergoing various military-grade tests, including low-temperature storage, sand and dust, high-temperature storage, and shock tests, demonstrating its robust quality.



2" Ultra Large AMOLED Always On Display

2.0" HD AMOLED Display **451** Pixels Per inch **410*502** Pixel Resolutions **1000nit** Peak Brightness



Image: The AMAZTIM M3 Smart Watch being used underwater by a diver, illustrating its 5ATM and IP69K dive-proof waterproof capabilities.

SPECIFICATIONS

Feature	Detail
Brand	AMAZTIM
Model Number	M3
Screen Size	2 Inches
Display Type	AMOLED
Screen Resolution	454 x 454
Operating System	Compatible for Android and iOS

Feature	Detail
Connectivity Technology	Bluetooth
GPS	No GPS (Note: Product description mentions GPS, but specifications state 'No GPS'. Please refer to product packaging for definitive information.)
Water Resistance	5ATM (50 meters)
Battery Capacity	480mAh (Lithium Polymer)
Battery Life (Typical)	Up to 2 weeks
Battery Life (Power Saving Mode)	Up to 60+ days
Special Features	Bluetooth Answer/Make Call, AI Voice Assistant, Compass, Health & Sport Monitor, Military Rugged Grade Designed
Item Weight	0.025 ounces
Material	Full Metal Unibody, Corning Gorilla Screen

MAINTENANCE

To ensure the longevity and optimal performance of your AMAZTIM M3 Smart Watch, follow these maintenance guidelines:

- **Cleaning:** Regularly wipe the watch screen and body with a soft, dry cloth. For stubborn smudges, use a slightly damp cloth and dry thoroughly. Avoid harsh chemicals.
- **Charging:** Use only the provided charging cable. Ensure the charging contacts on the watch and cable are clean and dry before charging.
- **Storage:** Store the watch in a cool, dry place when not in use. Avoid extreme temperatures.
- **Water Exposure:** While the watch is 5ATM waterproof, prolonged exposure to hot water (e.g., hot showers, saunas) or high-pressure water jets should be avoided as it may compromise the seals over time. Rinse with fresh water after exposure to salt water.

TROUBLESHOOTING

If you encounter issues with your AMAZTIM M3 Smart Watch, refer to the following common troubleshooting steps:

- **Watch not turning on:** Ensure the watch is fully charged. Connect it to the charger for at least 30 minutes.
- **Cannot pair with phone:**
 - a. Ensure Bluetooth is enabled on your phone and the watch is within range.
 - b. Restart both your phone and the watch.
 - c. Clear the Bluetooth cache on your phone (if applicable).
 - d. Try unpairing and re-pairing the device through the 'KOSPET FIT' app.
- **Notifications not appearing:**
 - a. Check app permissions in your phone settings to ensure 'KOSPET FIT' has access to notifications.
 - b. Verify that 'Do Not Disturb' or 'Low Power Mode' is not active on your phone, as these can block notifications.

- c. Ensure the 'KOSPET FIT' app is running in the background.
- **Inaccurate health data:** Ensure the watch is worn snugly on your wrist, not too tight or too loose. Clean the sensors on the back of the watch regularly.
- **Short battery life:**
 - a. Reduce screen brightness.
 - b. Limit the use of 'Always On Display' mode.
 - c. Disable unnecessary notifications or background app refreshes.
 - d. Consider using Power Saving Mode for extended battery life.

If issues persist, please contact AMAZTIM customer support for further assistance.

WARRANTY AND SUPPORT

Your AMAZTIM M3 Smart Watch comes with a standard manufacturer's warranty. Please refer to the warranty card included in your package for specific terms and conditions. For technical support, product inquiries, or warranty claims, please visit the official AMAZTIM website or contact their customer service directly.

AMAZTIM Store: [Visit the AMAZTIM Store on Amazon](#)