

[Manuals.plus](#) /

> [Jojoka](#) /

> Jojoka Vanity Desk with Mirror and Lights (Model JJ-hjx-W1) Instruction Manual

Jojoka JJ-hjx-W1

Jojoka Vanity Desk with Mirror and Lights

Model: JJ-hjx-W1 | Brand: Jojoka

INTRODUCTION

This manual provides detailed instructions for the assembly, operation, maintenance, and troubleshooting of your Jojoka Vanity Desk with Mirror and Lights. Please read this manual thoroughly before assembly and use to ensure proper function and safety.

SAFETY INFORMATION

- Assembly may require safety precautions. Always follow instructions carefully.
- Use electrical components with caution. Ensure proper connection to a power source.
- Keep children and pets away from the assembly area.
- Do not overload drawers or shelves to prevent tipping.

PACKAGE CONTENTS

Verify that all components are present before beginning assembly:

- Vanity Desk Components
- LED Mirror Unit
- Matching Stool
- Assembly Hardware (screws, dowels, etc.)
- Instruction Manual

SETUP AND ASSEMBLY

The Jojoka Vanity Desk is designed for straightforward assembly. Step-by-step instructions and all necessary hardware are included. Assembly typically takes approximately 2.5 to 5 hours with two people.

Assembly Steps Overview:

1. Unpack all components and verify against the parts list.
2. Assemble the main desk frame according to the diagrams.
3. Install the drawer slides and assemble the 7 drawers.
4. Attach the mirror unit and side shelves to the desk.
5. Connect the LED mirror power cable to the integrated power outlet.
6. Assemble the matching stool.
7. Secure the hair dryer rack to the side of the desk.

Product Dimensions:

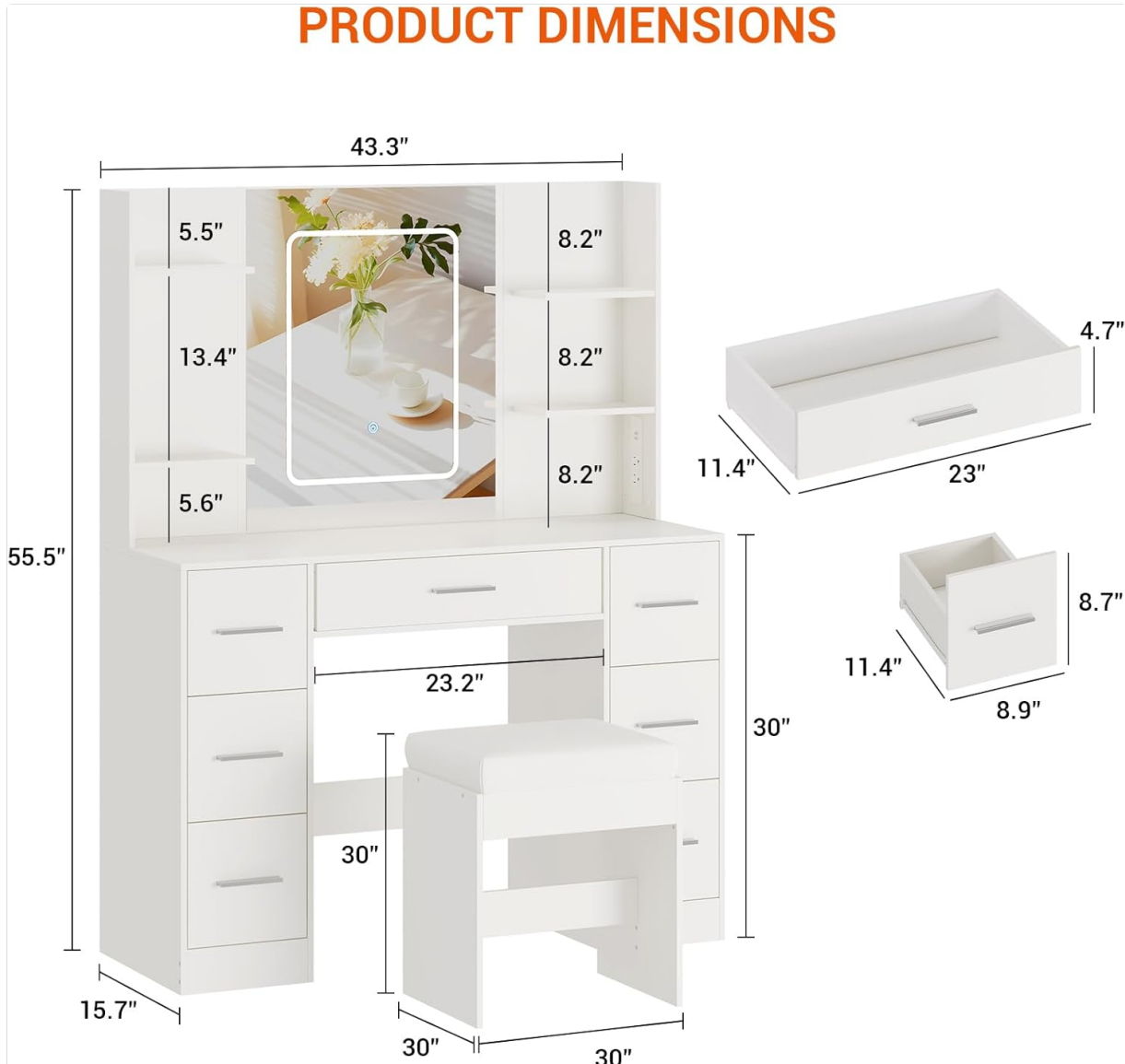


Image: Detailed dimensions of the Jojoka Vanity Desk, illustrating overall size and individual component measurements for accurate placement and assembly.

Assembly Video:

Your browser does not support the video tag.

Video: A brief overview of the vanity desk, highlighting its features and providing a visual guide to its components and potential uses. This video is a short preview from the seller.

OPERATING INSTRUCTIONS

LED Mirror Operation:

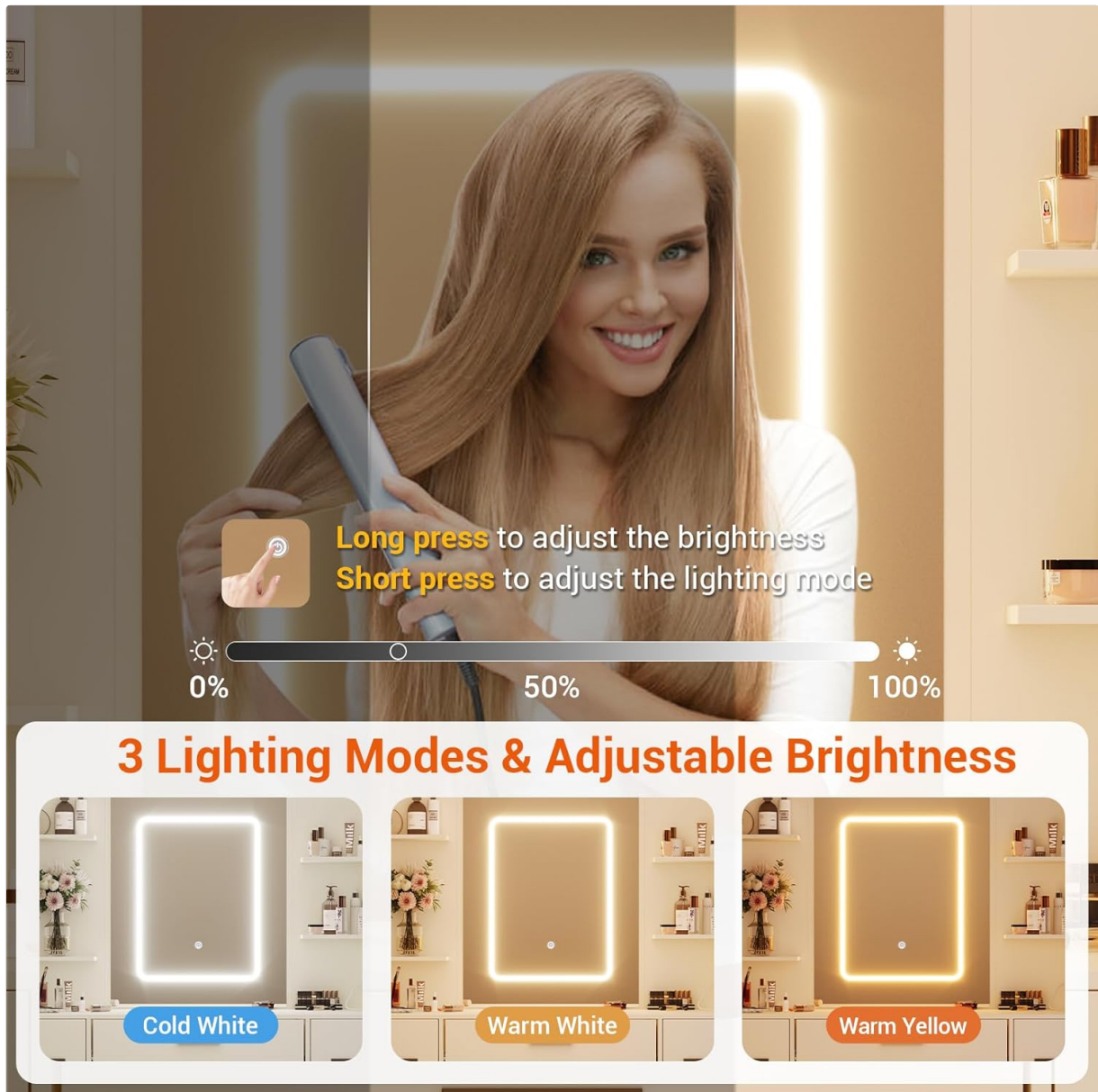


Image: Close-up of the LED mirror with touch controls, illustrating the three lighting modes (Cold White, Warm White, Warm Yellow) and brightness adjustment from 0% to 100%.

- **Power On/Off:** Gently tap the touch sensor on the mirror to turn the LED lights on or off.
- **Change Lighting Mode:** Short press the touch sensor to cycle through three color modes: Warm, Cool, and Daylight.
- **Adjust Brightness:** Long press the touch sensor to continuously adjust the brightness level from 0% to 100%. Release when desired brightness is achieved.

Integrated Power Outlet & Hair Dryer Rack:

BUILT-IN CHARGING STATION



Image: Detail of the built-in charging station, showing two 125V/12A AC outlets and two 5V/2A USB ports, with a 4.9-foot power cord. A hair dryer is shown in its dedicated rack.

- The vanity desk features 2 standard AC outlets and 2 USB ports for convenient charging of mobile devices or powering hair styling tools.
- A dedicated rack is provided on the side of the desk to securely hold your hair dryer.

Storage Features:



Image: The vanity desk with several drawers pulled out, illustrating the ample storage space for cosmetics, perfumes, jewelry, and nail polish, along with open shelving for additional items.

- The desk includes 7 spacious drawers and 6 open storage shelves to help organize cosmetics, jewelry, and other personal items.
- The wider desktop provides ample space for daily routines.

MAINTENANCE

- **Cleaning:** Wipe the surface with a damp cloth for cleaning. The waterproof surface makes maintenance easy.
- **Avoid Moisture/Heat:** To preserve the quality and appearance of the vanity desk, avoid exposure to excessive moisture or heat.
- **Drawer Care:** Ensure drawers slide smoothly. If they become stiff, check for obstructions or apply a silicone-based lubricant to the slides.

TROUBLESHOOTING

LED Mirror Lights Not Working:

- Ensure the mirror's power cord is securely plugged into the integrated power outlet.
- Verify that the main power cord for the vanity desk is plugged into a functional wall outlet.
- Gently tap the touch sensor to ensure it registers the command.

Assembly Difficulties:

- Double-check all steps in the provided instruction manual.
- Ensure all parts are correctly oriented as shown in the diagrams.
- Verify that all hardware is used in the correct locations.

SPECIFICATIONS

Feature	Detail
Brand	Jojoka
Model Number	JJ-hjx-W1
Product Dimensions	15.7"D x 43.3"W x 55.5"H
Item Weight	116.8 pounds
Material	Engineered Wood
Color	White
LED Lighting Modes	3 (Warm, Cool, Daylight)
Brightness Adjustment	Yes (Long press touch control)
Power Outlets	2 AC outlets, 2 USB ports
Storage	7 Drawers, 6 Open Shelves, Hair Dryer Rack
Assembly Required	Yes
Stool Included	Yes

WARRANTY AND SUPPORT

For warranty information or customer support, please refer to the documentation included with your purchase or contact Jojoka customer service directly. Details can typically be found on the manufacturer's website or through your retailer.