

## Manuals+

[Q & A](#) | [Deep Search](#) | [Upload](#)

manuals.plus /

- › [CARPURIDE](#) /
- › [Carpuride W702BS Pro Motorcycle Carplay Screen User Manual](#)

**CARPURIDE MC-702BS Pro = 702BS**

# Carpuride W702BS Pro Motorcycle Carplay Screen

**MODEL: MC-702BS PRO = 702BS**

User Manual

---

## 1. Introduction

---

Thank you for choosing the Carpuride W702BS Pro Motorcycle Carplay Screen. This device is designed to enhance your riding experience by integrating wireless CarPlay and Android Auto directly onto your BMW motorbike. With its 7-inch waterproof touchscreen, dual Bluetooth connectivity, intercom function, and data reading capabilities, the W702BS Pro provides convenient access to navigation, communication, and entertainment while on the road. This manual provides detailed instructions on how to set up, operate, and maintain your Carpuride W702BS Pro to ensure optimal performance and longevity.



Image: The Carpuride W702BS Pro screen displaying various functions, alongside a BMW motorcycle and its wonder wheel control.

## 2. Setup

### 2.1. Installation Guide

The Carpuride W702BS Pro is specifically designed for BMW Moto R1200GS, R1250GS (excluding 2019 version), S1000XR, and R1300GS Motorbikes. It requires an original BMW navigation base that can transmit data.

1. **Step 1:** Ensure you have an original navigation base on your BMW motorcycle that supports data transmission.
2. **Step 2:** Install the Carpuride W702BS Pro device onto the motorcycle's original navigation base. Ensure the buckle position on the top of the motorcycle bracket is fully engaged.
3. **Step 3:** Once securely installed, the device is ready for use.

# Original BMW Installation Mode



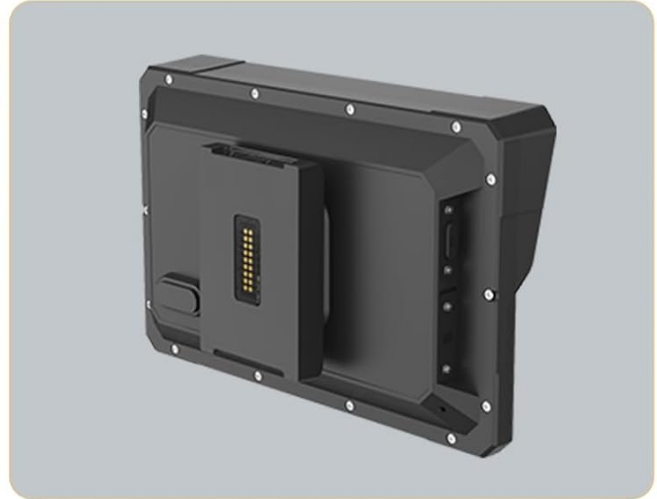
Be suited to :

BMW S 1000XR

BMW R1200GS

BMW R1300GS

BMW R1250GS (Not fit 2019 version)



1 You must have an original BMW navigation base.

2 702BS Pro device's back



3 Install the device to the BMW motorcycle original navigation base.  
Press the buckle position on the top of the motorcycle bracket (red arrow) if the device doesn't fully buckle with the motorcycle bracket.



4 The installation is complete and can be used.

Image: A close-up view of the original BMW motorcycle navigation base, where the Carpuride W702BS Pro is mounted.

# Compass & Barometer & TPMS System



Image: Visual guide illustrating the four steps of installing the Carpuride W702BS Pro onto the BMW motorcycle's navigation base.

## 2.2. Wireless CarPlay and Android Auto Connection

To utilize wireless CarPlay or Android Auto, ensure your smartphone meets the following requirements:

- **For CarPlay:** iPhone 6 or above, running iOS 13 or above. CarPlay system and iPhone's voice system (Siri) must be enabled.
- **For Android Auto:** Phone supports 5GHz Wi-Fi and runs Android 11 or above. VPN function must be turned off. Your phone must support Android Auto, Google Maps, Google, Google Voice app, and have the latest versions installed.

### Connection Steps:

1. **Step 1:** On the Carpuride screen, open the CarPlay or Android Auto application.
2. **Step 2:** On your iPhone, search for the Wi-Fi network named "Carpuride-xxxx" and connect using the password "66666666". For Android, use Wi-Fi to find "carpuride-xxxx" and enter the code "66666666".
3. **Step 3:** Confirm the connection. Once successful, the CarPlay or Android Auto interface will appear on the screen.



Image: A five-step visual guide demonstrating how to connect an iPhone to the Carpuride W702BS Pro for Apple CarPlay via Wi-Fi.



Image: A six-step visual guide demonstrating how to connect an Android phone to the Carpuride W702BS Pro for Android Auto via Wi-Fi.

## 2.3. Incompatible Phone Models

Please note that the Carpuride W702BS Pro is not fully compatible with certain phone models. These include:

- Samsung Note and S series (e.g., S20, S23, Note 20)
- Huawei series (e.g., 10 Pro, P30 lite MAR-LX1A, Mate 20, Mate 10, P40 Pro, P30)
- Xiaomi series (e.g., 12 Pro, 11 lite, 9, 14T Pro, Poco X3 Pro)
- Oppo series (e.g., Reno 2, Reno2 Z, A16S)
- Galaxy A20 (Model SM-A205G), Redmi 9, M22, P smart 2019 - POT-LX1, Nova 5t



Image: A diagram outlining the requirements for CarPlay and Android Auto, along with a list of known incompatible phone models.

## 3. Operating

### 3.1. Native Wonder Wheel Control

The Carpuride W702BS Pro seamlessly integrates with your BMW motorcycle's Native Wonder Wheel, allowing you

to operate the device without additional accessories. This provides a safe and intuitive way to control functions while riding.

- **Return button:** Exit the current function, return to the previous level.
- **Confirm button:** Confirm to enter the current cursor function of the wonder wheel.
- **Rotate up/down:** Move the current cursor to the previous/next icon.
- **Long press (3 seconds):** In Android Auto mode, return the cursor from the APP detailed operation page to the previous operation page. In CarPlay mode, use the K1 button to exit the previous operation screen interface without pressing the K5 button.
- **Long press (5 seconds):** Switch between "TFT" mode and "NAV" mode.

## Native Wonder Wheel Control

Through the BMW Wonder Wheel to operate the machine, but also directly read motorcycle's data, such as speed, fuel, engine RPM and mileage, etc, enhancing the overall ease of riding.



- 1 Return button; exit the current function, return to the previous level.
- 2 Confirm button, confirm to enter the current cursor function of the wonder wheel.
- 3 Rotate up, the current cursor moves to the previous icon.
- 4 Rotate down, the current cursor moves to the next icon.
- 5 In Android auto mode, long press for 3 seconds can make the cursor go back to the previous operation page from the detail operation page of the app. (In CarPlay mode, you can exit the previous operation screen using the K1 button without the need to press the K5 button.)
- 6 Long press 5 seconds, the "TFT" mode switch to "NAV" mode.
- 7 Long press 5 seconds, the "NAV" mode switch to "TFT" mode.

Image: A detailed view of the BMW Wonder Wheel on a motorcycle handlebar, with numbered labels indicating the function of each control button.

### 3.2. Dual Bluetooth and Intercom Function

The W702BS Pro features upgraded dual Bluetooth technology, enabling connection to two Bluetooth headsets or helmets simultaneously via its BT Trans (Bluetooth transmission) function. This allows for music sharing and navigation route sharing between two riders.

- **Single-person Connection Mode:** Connect your Bluetooth headset or helmet to the Carpuride screen. Ensure your phone is not connected to the Bluetooth headset, as this may interfere with pairing.
- **Two-person Connection Mode:** Connect Bluetooth 1 and Bluetooth 2 simultaneously. Music and audio can be shared, but voice assistant commands and phone calls are transmitted only to Bluetooth 1. It is recommended that the main rider connects to Bluetooth 1.
- **Intercom Function:** To use the intercom, click the Audio output icon on the home page, select BT Trans mode, and connect Bluetooth 1 and Bluetooth 2. Then, click the intercom icon to activate intercom mode. The effective Bluetooth distance for intercom is approximately 10cm, ideal for communication between a main rider and a co-rider on the same motorcycle.



Image: Diagrams illustrating both single-person and two-person Bluetooth Trans connection modes, showing how phones, the screen, and headsets/helmets connect.

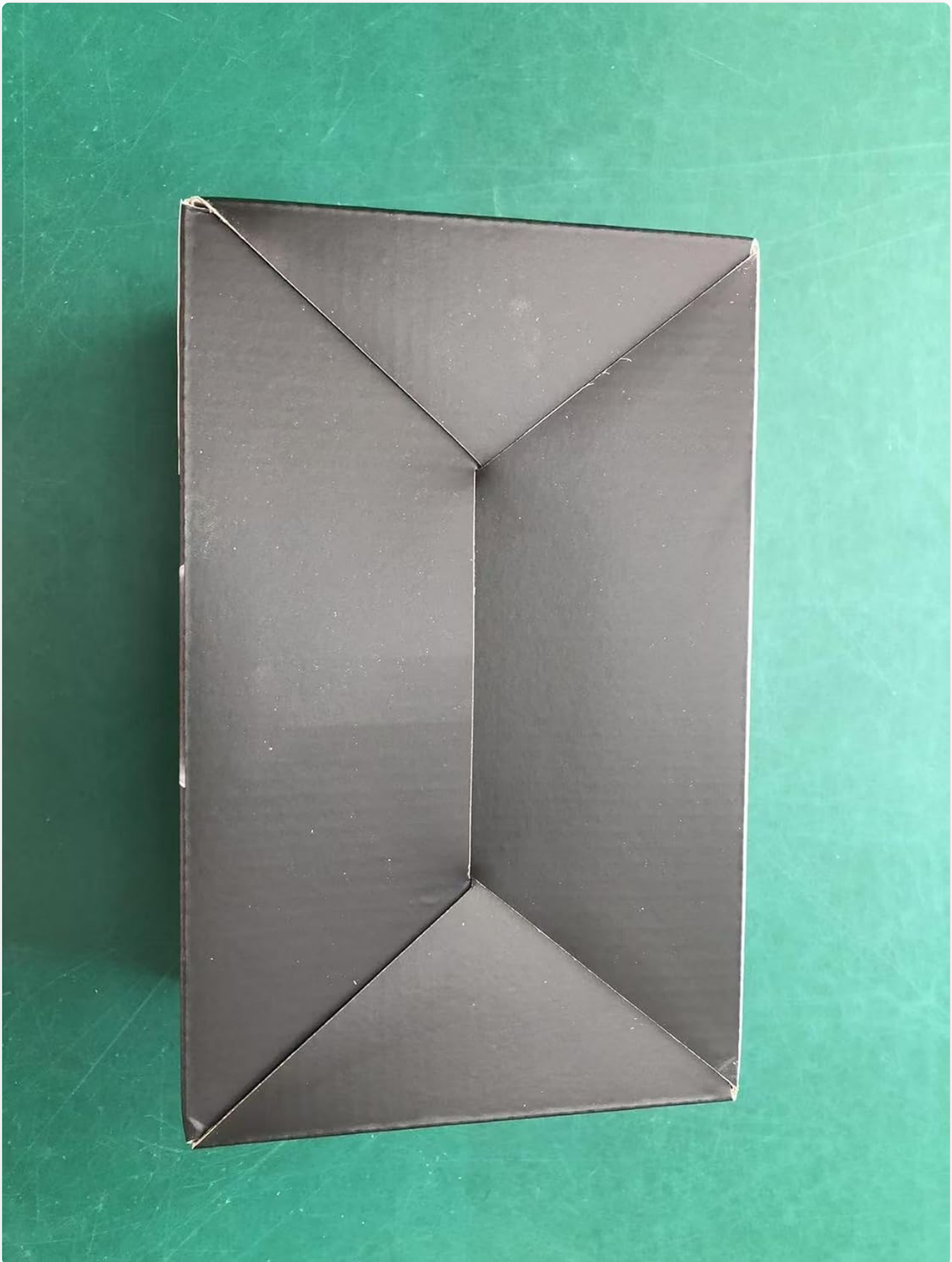


Image: Two riders on a motorcycle, demonstrating the music sharing and intercom function between two Bluetooth headsets, with a maximum distance of 10 meters.

### **3.3. Data Reading**

The device can directly read your motorcycle's data, providing insights into performance and other important metrics. This includes:

- Speed
- Fuel level
- Engine RPM
- Mileage
- TPMS (Tire Pressure Monitoring System) display (requires a pre-installed TPMS system on your BMW motorcycle).

## Bluetooth Trans (Single-person Connection Mode)

- Note:**
1. The helmet or headset must be turned on and in an active state in order to be discovered by the Carpuride screen for pairing.
  2. Make sure your phone is not connected to Bluetooth headset, as this may interfere with the pairing process. If it is connected, disconnect and delete the pairing records from the BT headset in the phone's Bluetooth list.



## Bluetooth Trans (Two-person Connection Mode)

Connect to BT 1 and BT 2 at the same time, music and audio can be shared, but calls and voice assistant broadcast can only be realized through BT 1, BT 2 can't! , so it is recommended that the main riders connect Bluetooth 1.



## iPlay/ Auto (Bluetooth Audio)

1. Use your phone to connect CarPlay or Android Auto of Carpuride Screen, make sure the connection is successful.
2. Click "Audio Output" select "Iplay/auto" mode. Then use your phone to connect your Bluetooth headset to play audio.
3. Make sure to disconnect and delete the Bluetooth headset connection records from Carpuride Screen.

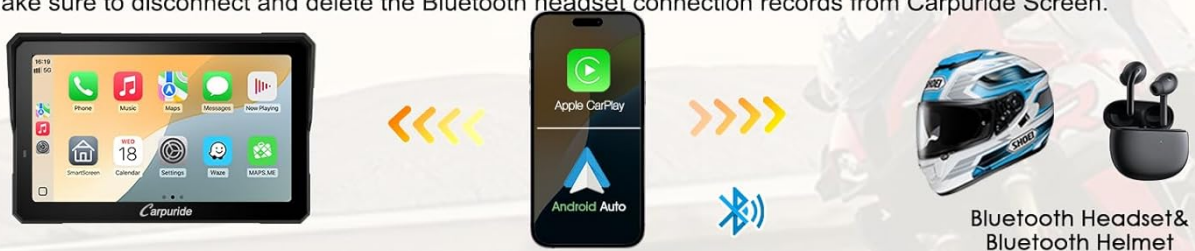
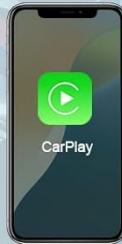


Image: Various screens showing motorcycle data such as speed, RPM, fuel, and tire pressure, as displayed on the Carpuride device.

## CarPlay

To use wireless CarPlay, you need to meet the following requirements:

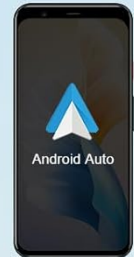
- An iPhone running iOS 6 or above
- An iPhone system version requires iOS 13 and above
- It also requires the CarPlay system and the iPhone's voice system to be turned on.
- Please check if Siri is enabled.



## Android Auto

To use wireless Android Auto, you need to meet the following requirements:

- A phone support 5GHz Wi-Fi and running Android 11 or above.
- Cannot turn on VPN function on mobile phone.
- A phone that supports the Android Auto, Google Maps, Google, Google Voice app, must update the latest version.
- Before purchasing, please make sure your phone supports wireless Carplay or wireless Android Auto.



## Incompatible Phone Models

- Samsun Series (Samsun S20, Samsun S23, Samsun Note 20, etc.)
- Huawei Series (10 Pro, P30 lite MAR-LX1A, Mate 20, Mate 20 Pro, Mate lite 10, P40 Pro, P40, P30, P30 Pro, etc.)
- Xiaomi Series (Xiaomi 12 Pro, Xiaomi 11 lite, Xiaomi 9, Xiaomi 14T Pro, Xiaomi Poco X3 pro, etc.)
- Oppo Series (Oppo Reno 2, Oppo RENO2 Z, A16S, etc)
- Galaxy A20 (Model SM-A205g), Redmi 9, M22, P smart 2019 - POT-LX1, Nova 5t, etc



Image: A screen capture showing the BMW TPMS (Tire Pressure Monitoring System) display on the Carpuride device, indicating front and rear tire pressure.

### 3.4. Compass and Barometer

For outdoor exploration, the device includes a compass function to help with navigation and a barometer for measuring atmospheric pressure, which can indicate altitude changes. These features contribute to safer riding conditions.



Image: A split image showing a compass display on the Carpuride screen on the left, and a barometer display on the right, with motorcycles in mountainous terrain.

### 3.5. Light Sensing Design

The integrated light-sensing design automatically adjusts the screen brightness based on ambient light conditions. This feature protects your eyes and ensures optimal screen visibility, promoting safer riding.

## Compass & Barometer



Image: A visual comparison showing how the screen brightness adjusts automatically between daytime (bright) and nighttime (dimmed) conditions for eye protection.

### 3.6. Waterproof and Durability

The Carpuride W702BS Pro boasts an IP67 waterproof rating and a durable design, allowing it to function normally even in rain or scorching sun. It operates flawlessly in temperatures ranging from -20°C to 70°C.

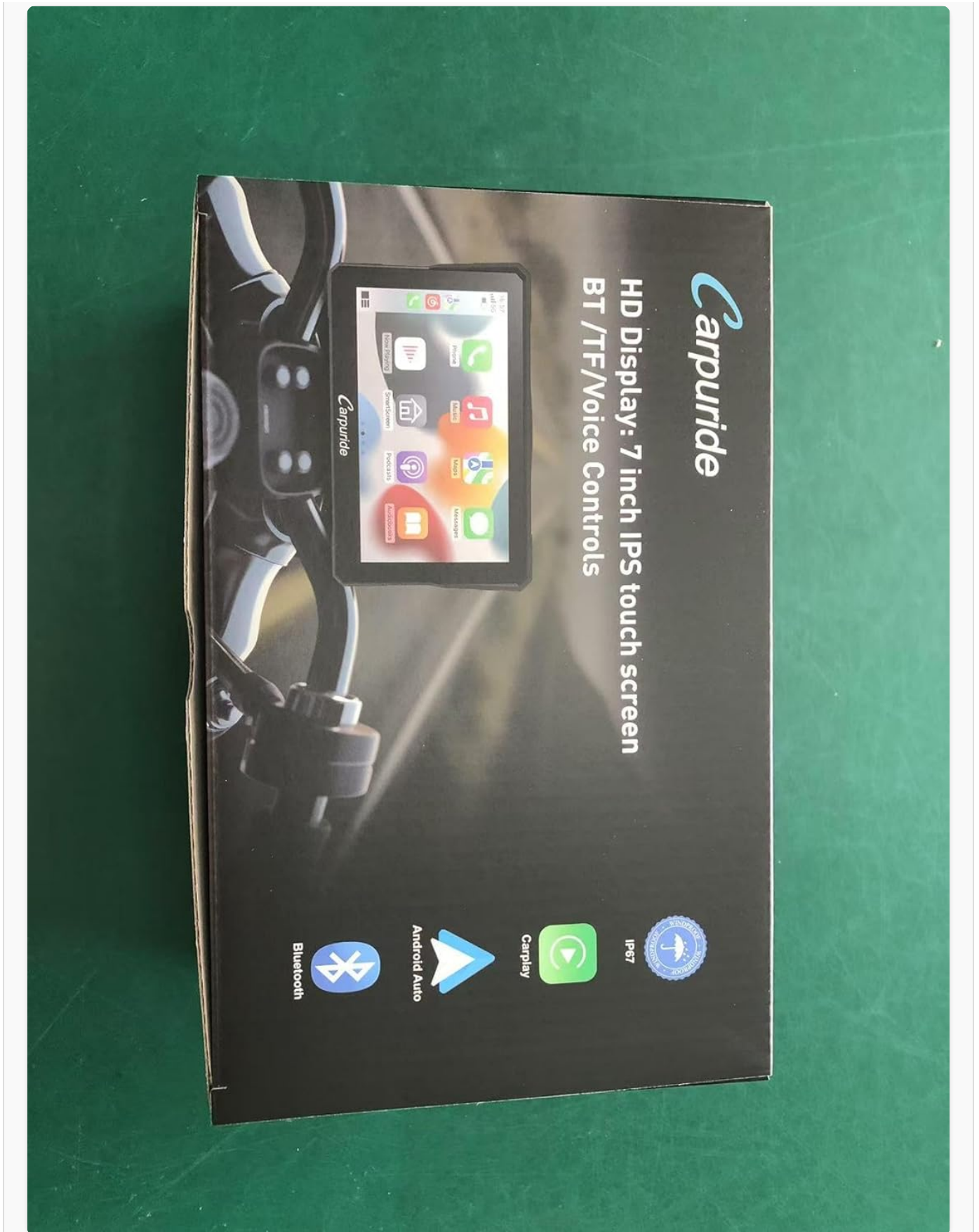


Image: The Carpuride W702BS Pro screen mounted on a motorcycle, shown with raindrops on its surface, highlighting its IP67 waterproof feature.

## 4. Maintenance

To ensure the longevity and optimal performance of your Carpuride W702BS Pro, follow these maintenance guidelines:

- **Cleaning:** Use a soft, damp cloth to clean the screen and exterior. Avoid abrasive cleaners or solvents that could damage the surface.
- **Protection:** While the device is IP67 waterproof, avoid prolonged submersion. When not in use, especially for extended periods, consider detaching the screen and storing it in a dry, safe place to protect it from extreme temperatures or potential theft.
- **Software Updates:** Keep the device's software updated to benefit from new features, performance improvements, and bug fixes. Contact Carpuride support for the latest software updates.

## 5. Troubleshooting

If you encounter issues with your Carpuride W702BS Pro, refer to the following common problems and solutions:

- **Device not powering on:** Ensure the device is correctly installed on the BMW navigation base and that the base is transmitting data. Check for secure connections.
- **CarPlay/Android Auto not connecting:**
  - Verify your smartphone meets the compatibility requirements (iOS 13+ for iPhone 6+, Android 11+ for Android phones with 5GHz Wi-Fi).
  - Ensure VPN is off on Android phones.
  - Confirm Siri is enabled on iPhones.
  - Check the Wi-Fi connection and password.
  - Remember that some Samsung Note/S series, Huawei, and Xiaomi phones may not be fully compatible.
- **Intercom function issues:**
  - Ensure both Bluetooth headsets are connected to the W702BS Pro.
  - Note that voice assistant and phone call audio are only transmitted to Bluetooth 1.
  - The effective Bluetooth distance for intercom is approximately 10cm, designed for close proximity.
- **TPMS not displaying:** The TPMS display function requires a pre-installed TPMS system on your BMW motorcycle. If your motorcycle does not have this system, the feature will not work.
- **Screen brightness issues:** The light-sensing design automatically adjusts brightness. Ensure the sensor is not obstructed.
- **General performance issues or software glitches:** Contact Carpuride support for assistance and to inquire about the latest software updates.

## 6. Specifications

Feature	Description
Model Name	MC-702BS Pro = 702BS
Screen Size	7 Inches
Resolution	1024*600 HD IPS Touch Screen
Brightness	Up to 1000nit peak brightness
Connectivity	Bluetooth, Wi-Fi (5GHz)

Special Features	Wireless CarPlay & Android Auto, Data Reading, Intercom Function, Light Sensing Design, Upgraded Dual Bluetooth, Native BMW Wonder Wheel Control, Compass, Barometer
Waterproof Rating	IP67
Operating Temperature	-20°C to 70°C
Dimensions	18.2 x 4.42 x 11.4 cm (7.16 x 1.74 x 4.49 inches)
Weight	560 g
Storage Support	Up to 64G TF cards

## 7. Warranty and Support

The Carpuride W702BS Pro comes with a standard manufacturer's warranty. For specific details regarding warranty coverage and duration, please refer to the documentation included with your product or contact Carpuride customer support.

### 7.1. What's in the Box

- 1x Motorcycle Car stereo (702BS Pro = 702BS)
- 1x User Manual

### Original BMW Installation Mode



**1**

You must have an original BMW navigation base.



**2**

702BS Pro device's back



**3**

Install the device to the BMW motorcycle original navigation. Press the buckle position on the top of the motorcycle bracket (red arrow) if the device doesn't fully buckle with the motorcycle bracket.



**4**

The installation is complete and can be used.

Image: A visual representation of the product list, including the dimensions of the device, its side view showing power button and SD card slot, the color box, and the user manual.

### 7.2. Customer Support

For technical assistance, software updates, or any other inquiries, please contact Carpuride customer support:

**Email:** [service-@gguncc.com](mailto:service-@gguncc.com)

Please provide your model number (MC-702BS Pro = 702BS) and a detailed description of your issue when contacting support to ensure prompt assistance.

