

[manuals.plus](#) /

› [Imagebon](#) /

› [Imagebon 10.26" Apple Carplay Screen User Manual](#)

Imagebon 10.26"

Imagebon 10.26" Apple CarPlay Screen User Manual

Model: 10.26"

INTRODUCTION

The Imagebon 10.26" Apple CarPlay Screen is a versatile in-car entertainment and safety system designed to enhance your driving experience. It integrates wireless Apple CarPlay and Android Auto, providing seamless access to navigation, calls, and music. Equipped with an Advanced Driver Assistance System (ADAS), a 4K front dash camera, and a 1080P rear backup camera, it offers comprehensive recording and safety features. This manual provides detailed instructions for setup, operation, maintenance, and troubleshooting to ensure optimal performance of your device.

PRODUCT OVERVIEW AND COMPONENTS

The Imagebon 10.26" Apple CarPlay Screen comes with all necessary components for installation and immediate use. Familiarize yourself with each part before proceeding with the setup.



Figure 1: Product dimensions, ports, and included accessories.

Included Components:

- 10.26" Apple CarPlay Screen Unit
- Rear Camera
- Car Charger (for DC12-24V 2.5A)

- GPS Antenna (additional for ADAS activation)
- AUX Cable
- 3M Sticky Mount
- Suction Cup Mount
- 64GB TF Card (MicroSD Card)
- User Manual

Ports and Connections:

- **GPS 3.5 Jack:** For connecting the external GPS antenna.
- **TF Card Slot (Up to 128GB):** For storage of dash cam recordings.
- **AV IN (for Rear Camera):** Input for the 1080P backup camera.
- **USB-C/Buck line:** Main power input from the car charger.
- **AUX Audio Input:** For connecting external audio sources.
- **USB-A (for Charging):** For charging external devices.

SETUP

Mounting the Unit:

The unit offers two primary mounting options: a 3M sticky mount for dashboard installation and a suction cup mount for windshield installation. Choose the option that best suits your vehicle and provides an unobstructed view of the road and the screen.

Our Products VS Others



+



+



- Two mounting options allows for flexible placement or stable position as you like
- Quick installation, 5 mins to complete
- No-destructive installation
- Direct replacement if after-sales required
- Compatible with 99% DV12-24V Car such as cars, trucks, vans, buses, pickups etc

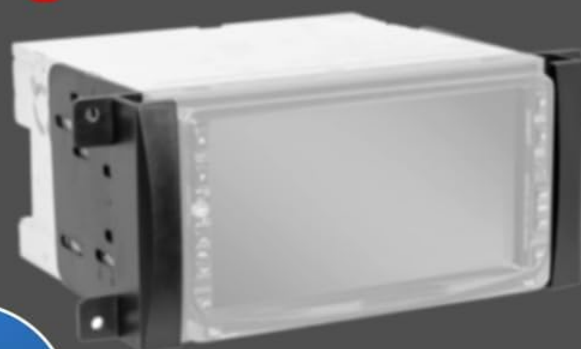


Figure 2: Two mounting options for flexible placement.

3-Axis G-Sensor

With built-in 3-Axis G-sensor, the sensitivity can be set to low, medium, or high. If there is vibration during recording, the machine will record a new 20-second video and save it to the emergency recording.

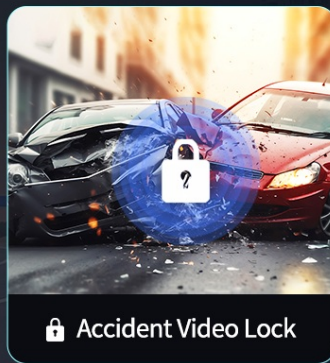


Figure 3: The screen supports 180° and 360° rotation for optimal viewing angles.

1. **Clean Surface:** Ensure the chosen mounting surface (dashboard or windshield) is clean and dry.
2. **Attach Mount:** Securely attach the 3M sticky mount or suction cup mount to the desired location. For the suction cup, press down firmly to create a vacuum seal.
3. **Attach Unit:** Slide the CarPlay screen unit onto the mount until it clicks into place. Adjust the angle for optimal visibility.

Connecting Power and Cameras:

Proper connection of power and cameras is crucial for the unit's functionality.

Four Ways for Sound



① FM Transmission



② 3.5mm AUX Output



③ Build-in Speaker



④ Bluetooth

Figure 4: Easy installation diagram for power and rear camera.

1. **Power Connection:** Connect the USB-C end of the car charger cable to the unit's USB-C/Buck line port. Plug the car charger into your vehicle's cigarette lighter socket.
2. **Rear Camera Installation:** Mount the 1080P rear camera at the back of your vehicle. Route the camera cable to the main unit and connect it to the AV IN port. For automatic reverse view, connect the red wire of the rear camera cable to your vehicle's reverse light power supply.
3. **GPS Antenna (Optional):** If using ADAS features, connect the GPS antenna to the GPS 3.5 Jack.
4. **TF Card Insertion:** Insert the provided 64GB TF card into the TF Card Slot. Ensure it is inserted correctly.

OPERATING INSTRUCTIONS

Initial Power-On and Boot-Up:

Once connected to power, the unit will automatically power on with your vehicle. The 4-core chip ensures a fast 5-second boot-up time.



Figure 5: Fast 5-second boot-up time.

Wireless Apple CarPlay / Android Auto:

Enjoy seamless integration with your smartphone for navigation, music, calls, and more.

10.26" Wireless Carplay Stereo



Android Auto



Apple Carplay



Airplay



Bluetooth



Voice Control



ADAS



Playing Music



24H Parking Monitor



GPS



Roadcam



Figure 6: Key features including Wireless Apple CarPlay and Android Auto.



Figure 7: Phone Casting and Phone Mirroring capabilities.

1. **Enable Bluetooth/Wi-Fi:** On your smartphone, ensure Bluetooth and Wi-Fi are enabled.
2. **Pair Device:** On the CarPlay screen, navigate to the Bluetooth settings and pair with your smartphone. Follow the on-screen prompts to confirm pairing.
3. **Automatic Connection:** Once paired, Apple CarPlay or Android Auto will automatically connect wirelessly when the unit powers on and your phone is nearby.

Advanced Driver Assistance System (ADAS):

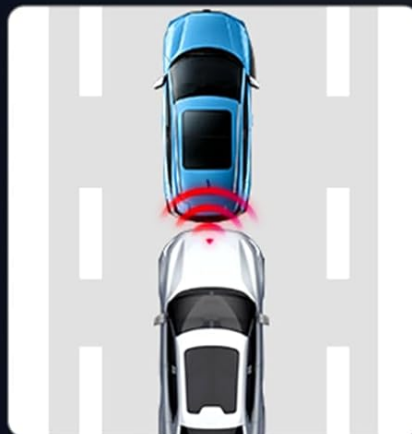
The ADAS feature enhances driving safety by providing alerts for potential hazards. An additional GPS antenna is required to activate this feature.

ADAS Technology for Safe Driving

ADAS (Advanced Driver Assistance Systems) enhances driving experience by helping prevent accidents and ensuring a safer journey



Front Vehicle Starts
Moving



Forward Collision
Warning



Lane Departure
Warning



FVSRS: An additional GPS antenna is required to activate this feature.

Figure 8: ADAS features for safe driving.

- **Front Vehicle Starting Reminder:** Alerts you when the vehicle in front starts moving.
- **Forward Collision Warning:** Provides an alert if you are approaching a vehicle too quickly.
- **Lane Departure Warning:** Warns you if you drift out of your lane without signaling.

Dual Dash Cam Recording (4K Front + 1080P Rear):

The integrated dual dash cam continuously records your drive, providing crucial evidence in case of incidents.

Seamless Loop Recording

64GB MicroSD Card Included for Instant Use of Recording



Figure 9: Seamless loop recording with included 64GB MicroSD card.

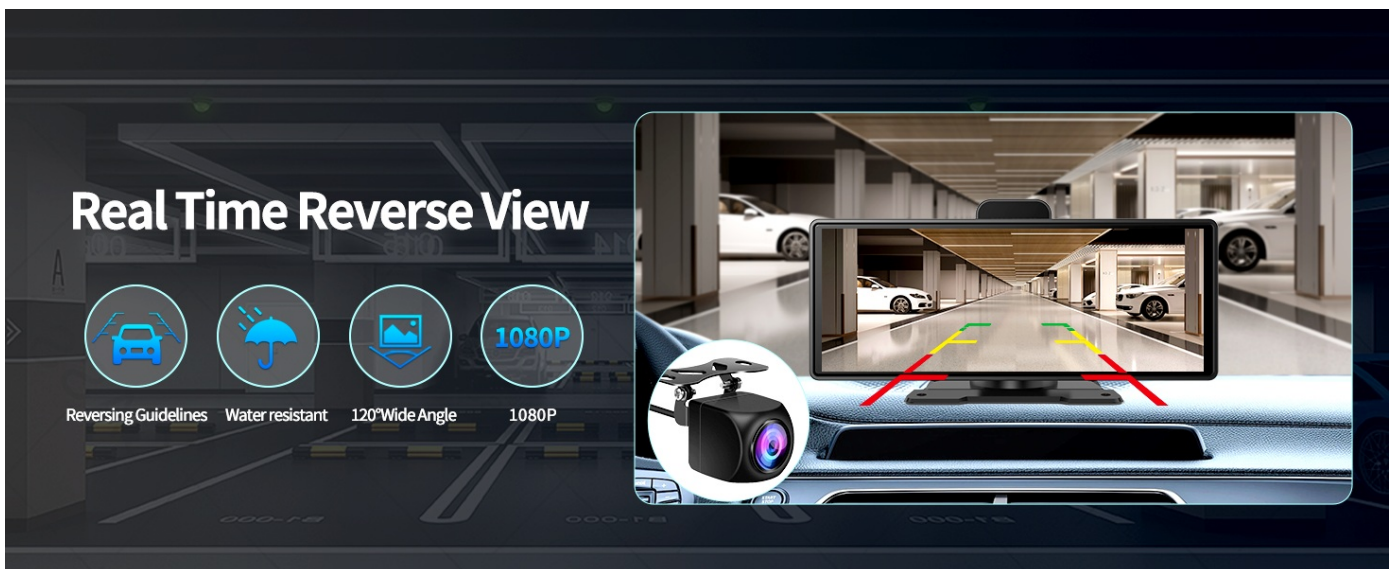


Figure 10: 4K Ultra HD front camera with 160° wide angle.

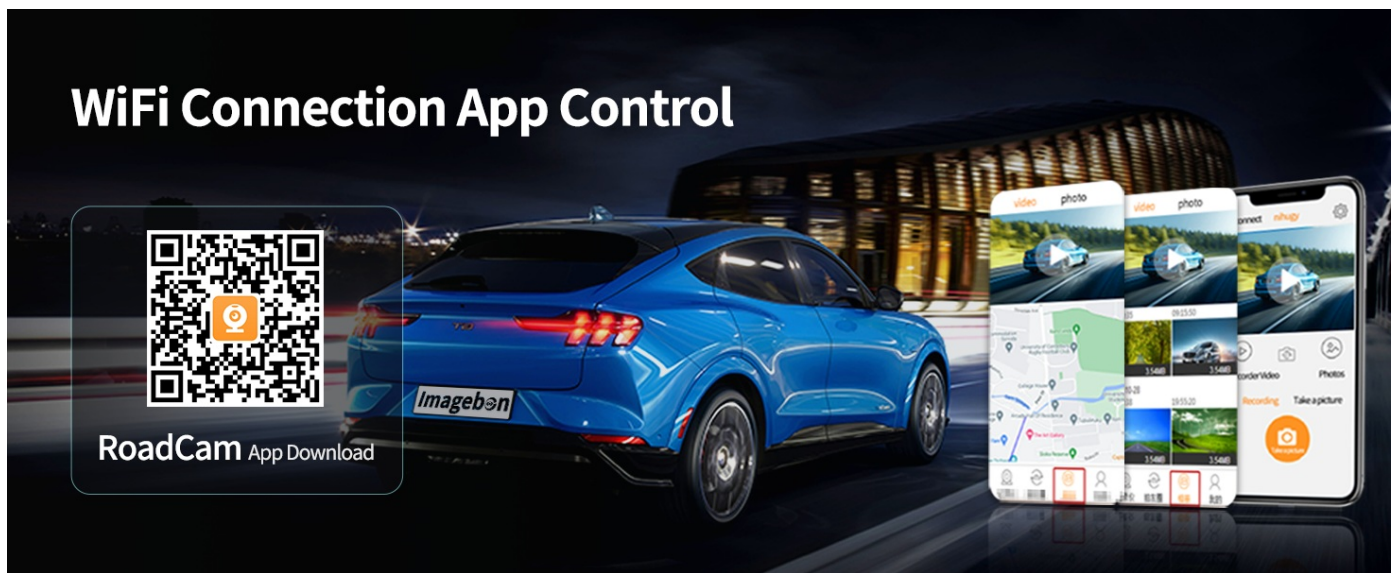


Figure 11: 3-Axis G-Sensor for parking monitor, accident video lock, and loop recording.

- **Loop Recording:** The system automatically overwrites the oldest footage when the TF card is full, ensuring continuous recording.
- **G-Sensor:** In case of a sudden impact or collision, the built-in G-sensor automatically locks the current video segment to prevent it from being overwritten. Sensitivity can be adjusted.
- **24H Parking Monitor:** With an optional hardwire kit, the unit can monitor your vehicle for impacts even when parked.

Audio Output Options:

The unit offers multiple ways to output audio to your car's sound system.



Figure 12: Four ways to output audio from the unit.

- **Bluetooth Audio:** Connect your phone to the unit via Bluetooth for audio playback.
- **AUX Audio:** Connect the unit to your car's AUX input using the provided 3.5mm AUX cable.
- **FM Audio:** Transmit audio to your car's FM radio by tuning both devices to the same FM frequency.
- **Built-in Speaker:** The unit has its own speaker for direct audio output.

Hands-Free Calling:

Make and receive calls safely using voice commands through Apple CarPlay or Android Auto.

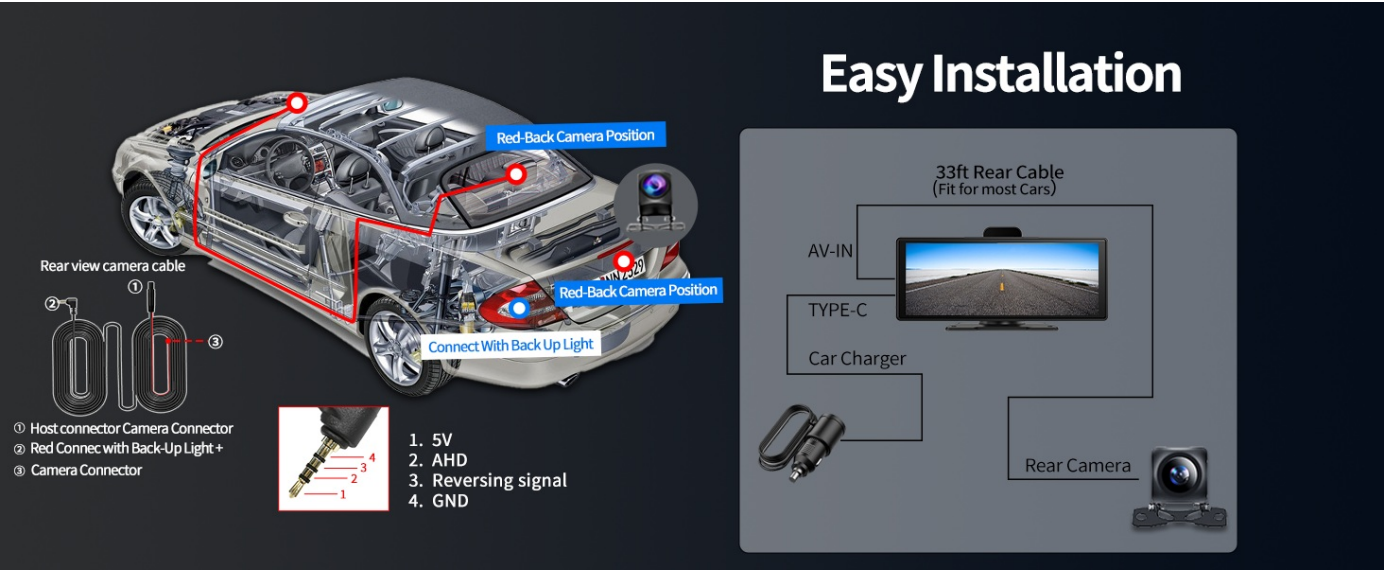


Figure 13: Hands-free calling for safer driving.

Real-Time Reverse View:

When the rear camera is properly installed and connected to your vehicle's reverse light, the screen will automatically display the rear view when you shift into reverse.



Figure 14: Real-time 1080P reverse view with guidelines.

RoadCam App Control:

Manage and view your dash cam recordings directly from your smartphone using the RoadCam app.

Four Ways for Sound



Figure 15: RoadCam App for WiFi connection and control.

- **Download App:** Scan the QR code on the unit or visit <http://139.224.70.115/app/roadcam/roadcam.html> to download the RoadCam app.
- **Connect via Wi-Fi:** Connect your smartphone to the unit's Wi-Fi network (details available in the unit's settings).
- **Manage Recordings:** Use the app to view live footage, playback recorded videos, and download files to your phone.

SPECIFICATIONS

Feature	Specification
Brand	Imagebon
Model	10.26"
Screen Size	10.26 Inches (Diagonal)
Screen Resolution	1024 x 600 Pixels
Front Camera Resolution	4K UHD 2160p (3840*2160P)
Rear Camera Resolution	1080P Full HD
Image Aspect Ratio	4:3
Response Time	2 Milliseconds
Refresh Rate	60 Hz
Connectivity Technology	Bluetooth, USB, Wi-Fi
Special Features	Android Auto, Apple CarPlay, GPS Navigation, Hands-Free Calling, Touchscreen, ADAS
Compatible Devices	Smartphone
Audio Output Mode	Stereo (AUX, Speakers)
Storage Support	TF Card Slot (Up to 128GB)

Feature	Specification
Power Input	DC12-24V 2.5A
Item Weight	1.23 kg
Parcel Dimensions	31.2 x 28.3 x 9.7 cm

MAINTENANCE

To ensure the longevity and optimal performance of your Imagebon CarPlay screen, follow these maintenance guidelines:

- **Screen Cleaning:** Use a soft, lint-free cloth to gently wipe the screen. For stubborn smudges, slightly dampen the cloth with water or a screen-safe cleaner. Avoid abrasive materials or harsh chemicals.
- **Unit Cleaning:** Keep the main unit and cameras free from dust and debris. Use a dry, soft cloth. Do not use liquid cleaners directly on the unit.
- **Cable Management:** Ensure all cables are neatly routed and secured to prevent damage from snagging or excessive bending.
- **TF Card Care:** Periodically format the TF card (e.g., once a month) within the unit's settings to maintain optimal recording performance and prevent data corruption. Back up any important footage before formatting.
- **Temperature Exposure:** Avoid exposing the unit to extreme temperatures for prolonged periods. While designed for in-car use, excessive heat or cold can affect performance and lifespan.

TROUBLESHOOTING

If you encounter issues with your Imagebon CarPlay screen, refer to the following common problems and their solutions:

Problem	Possible Cause / Solution
Unit does not power on	Check if the car charger is securely plugged into both the unit and the vehicle's cigarette lighter socket. Ensure the vehicle's power outlet is functional.
Wireless CarPlay/Android Auto not connecting	Ensure Bluetooth and Wi-Fi are enabled on your smartphone. Delete previous pairings on both the unit and your phone, then attempt to re-pair. Ensure the unit's Wi-Fi is active.
No audio output	Verify the selected audio output mode (Bluetooth, AUX, FM) on the unit. Check cable connections for AUX. For FM, ensure the unit and car radio are on the same clear frequency. Adjust volume on both the unit and car stereo.
Dash cam not recording or footage is corrupted	Ensure the TF card is properly inserted and not full. Format the TF card through the unit's settings. Use a high-quality TF card (Class 10 or higher, U3 recommended).
Rear camera not displaying	Check the AV IN cable connection to the main unit and the power connection to the rear camera. Ensure the rear camera is receiving power (e.g., from the reverse light).
ADAS warnings are inaccurate or not working	Ensure the optional GPS antenna is connected and receiving a signal. Calibrate the ADAS system if an option is available in the settings. Ensure the camera lens is clean and unobstructed.

Problem	Possible Cause / Solution
Unit reboots randomly	Check power connections for looseness. Ensure the power supply is stable and within the specified voltage range (DC12-24V). Try a different power outlet in the vehicle if available.

Warranty and Support

For warranty information and technical support, please refer to the documentation included in your product packaging or contact Imagebon customer service directly. Keep your purchase receipt as proof of purchase for warranty claims.

Related Documents - 10.26"

<div> <div>Enjoy The Pleasure Of Driving</div> <div>4K Image CarPlay Android Auto ADAS</div> <div>Support 13 standard 12 Car Models</div>  </div>	<div> Imagebon 9.3" Portable Car Stereo with 4K ADAS Dash Cam - User Manual </div> <div> <p>A comprehensive user guide for the Imagebon 9.3" Portable Car Stereo, detailing features like 4K ADAS Dash Cam, Wireless Apple CarPlay and Android Auto, GPS Navigation, FM/AUX/Speaker/Voice Control, and 1080P Backup Camera functionality.</p> </div>
<div> <div>Enjoy The Pleasure Of Driving</div> <div>4K Image CarPlay Android Auto ADAS</div> <div>Support 13 standard 12 Car Models</div>  </div>	<div> Imagebon 9.3" Portable Car Stereo with 4K Dash Cam & ADAS User Manual </div> <div> <p>Detailed user manual for the Imagebon 9.3" Portable Car Stereo. Covers installation, features like 4K Dash Cam, ADAS, Wireless CarPlay/Android Auto, screen mirroring, audio options, and troubleshooting.</p> </div>
<div> <div>8-Core Android 13 CarPlay Android Auto</div>  </div>	<div> Imagebon 10.26 Inch Android 13 Smart Car Display - User Manual & Specifications </div> <div> <p>Comprehensive user manual and product specification for the Imagebon 10.26 Inch Smart Car Display, featuring 8-Core processor, CarPlay, Android Auto, 5G WiFi, Bluetooth, GPS, and rearview camera functionality.</p> </div>
<div> <div>Product Show</div>  </div>	<div> Imagebon H70K 11.4" 4K Dashcam with Wireless CarPlay & Android Auto - User Manual </div> <div> <p>Comprehensive user manual for the Imagebon H70K 11.4-inch 4K dashcam, detailing its features, interface, settings, installation for rear camera and GPS, and connectivity options including wireless CarPlay and Android Auto.</p> </div>
<div> <div>H60Pro 说明书</div> <div>正图</div> <div>背图</div>  </div>	<div> Imagebon H60Pro Dashcam: 4K, CarPlay, Android Auto, ADAS User Manual </div> <div> <p>Comprehensive user manual for the Imagebon H60Pro dashcam, detailing its 4K recording, CarPlay/Android Auto integration, ADAS features, construction, audio modes, and important usage guidelines.</p> </div>

