

ARGENDON Sandidry Pro 35C

ARGENDON 70 PPD Energy Star Dehumidifier User Manual

MODEL: SANDIDRY PRO 35C

1. Important Safety Information

Please read all instructions carefully before operating the dehumidifier. Retain this manual for future reference.

- Always connect the unit to a properly grounded electrical outlet.
- Do not operate the dehumidifier if the power cord or plug is damaged.
- Ensure the unit is placed on a stable, level surface to prevent tipping.
- Keep children and pets away from the unit during operation. The control lock feature can prevent accidental setting changes.
- Do not block air inlets or outlets. Maintain adequate clearance around the unit for proper airflow.
- Unplug the dehumidifier before cleaning or performing any maintenance.

2. Product Overview

The ARGENDON Sandidry Pro 35C is a high-capacity, Energy Star certified dehumidifier designed for effective moisture control in various indoor environments.

Included Components:

- 1 x ARGENDON Dehumidifier
- 1 x Gravity Drain Hose (6.56 ft)
- 1 x MERV-1 Filter (installed)
- 1 x Pump Drain Hose (19.67 ft)
- User Manual

Key Features:

- **High Capacity:** Removes up to 70 pints of moisture per day (90°F, 90% RH) or 35 pints (80°F, 60% RH).
- **Energy Star Certified:** Designed for energy efficiency, reducing operating costs.

- **Built-in Pump:** Offers flexible drainage options, including vertical pumping up to 19.6 feet.
- **Auto-Defrost System:** Prevents frost buildup, ensuring continuous operation in cooler environments.
- **GPP Mode:** Advanced technology for precise humidity control and energy savings.
- **Control Lock:** Prevents unintended changes to settings.
- **Durable Construction:** Features sheet metal construction for enhanced durability and impact resistance.
- **Unique Downside Air Outlet:** Directs airflow downwards to dry floors and carpets more effectively.



Image: The ARGENDON 70 PPD Dehumidifier, showing its sleek design and the included drain hose for continuous operation.

Multifunctional Dehumidifier



Image: Overview of the dehumidifier's multifunctional features, including Auto Defrosting, Built-in Pump, Control Lock, Overload Protection, GPP Mode, Power On/Off, SLGR Technology, and CETL Certification.

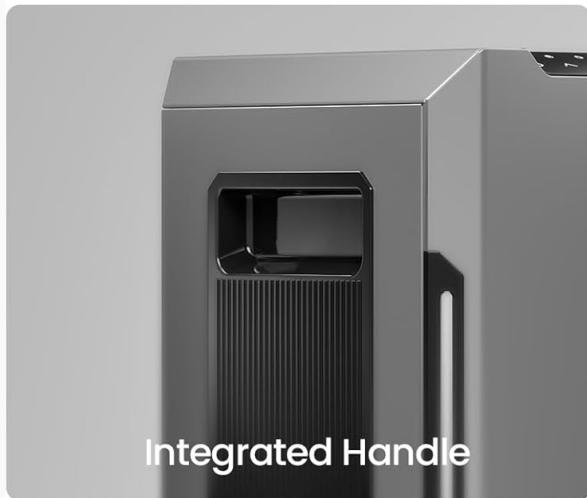
3. Setup Instructions

Placement:

- Place the dehumidifier in an area where humidity control is needed, such as a basement, living room, garage, office, or cloakroom.
- Ensure at least 8 inches (20 cm) of space around all sides of the unit for proper air circulation.
- The unit is equipped with 360° universal wheels and an integrated handle for easy movement.

Thoughtful Design

Compact, Portable, Convenient



Integrated Handle



Cord Hose Collection



360° Silent Universal Wheel

Image: Thoughtful design elements including an integrated handle, cord hose collection, and 360° silent universal wheels for portability.

Power Connection:

Plug the power cord into a grounded electrical outlet. The unit will enter standby mode.

Drainage Options:

The dehumidifier offers two drainage methods:

1. **Gravity Drainage:** Connect the 6.56 ft gravity drain hose to the drain port. Ensure the hose is sloped downwards to allow water to drain continuously by gravity into a suitable receptacle or floor drain.
2. **Pump Drainage:** For situations requiring water to be pumped upwards or over longer distances, connect the 19.67 ft pump drain hose. The built-in pump can lift water up to 19.6 feet vertically. This option allows for continuous drainage without manual emptying of a water tray.

Pump Drainage

Built-in condensate pump, it offers **19.6 ft** drainage height, which allows you to dry your basement as well.

Gravity Drainage

Gravity automatic drain, **6.5 ft** drain hose



Image: Illustration of both pump drainage (up to 19.6 ft height) and gravity drainage (6.5 ft hose) options for the dehumidifier.

4. Operating Instructions

Control Panel:

The intelligent control panel is located on the top of the unit. It features a digital display and various buttons for operation.

Intelligent Control Panel



Image: Detailed view of the intelligent control panel, showing buttons for Power, Up/Down (humidity/timer), LED (pump mode), Drain (pump mode), GPP (GPP mode), and Lock (screen lock).

- **Power Button:** Press to turn the dehumidifier on or off.
- **Up/Down Buttons:** Use to adjust the desired humidity level (25% RH - 80% RH) or set the timer.
- **GPP Mode Button:** Activates or deactivates GPP (Grains Per Pound) mode. This mode adjusts the set point based on absolute humidity for precise control and improved energy efficiency, especially at lower temperatures.
- **Drain Button:** Toggles the pump mode on or off for continuous drainage.
- **Lock Button:** Activates or deactivates the control lock, preventing accidental changes to settings.
- **Digital Display:** Shows the current humidity level and other operational information.

Automatic Defrost:

The unit features an automatic defrost system that prevents frost buildup on the coils, ensuring efficient operation even in cooler environments. The dehumidifier will temporarily stop dehumidifying and run the fan to melt any frost, then resume normal operation.

5. Maintenance

Filter Cleaning:

The dehumidifier is equipped with high-density MERV-1 filters. For optimal performance and air quality, clean the filter every three months.

1. Turn off and unplug the dehumidifier.
2. Open the lid covering the filter compartment.
3. Carefully remove the MERV-1 filter.
4. Wash the filter with warm, soapy water. Rinse thoroughly and allow it to air dry completely before reinserting.
5. Reinsert the dry filter and close the lid.

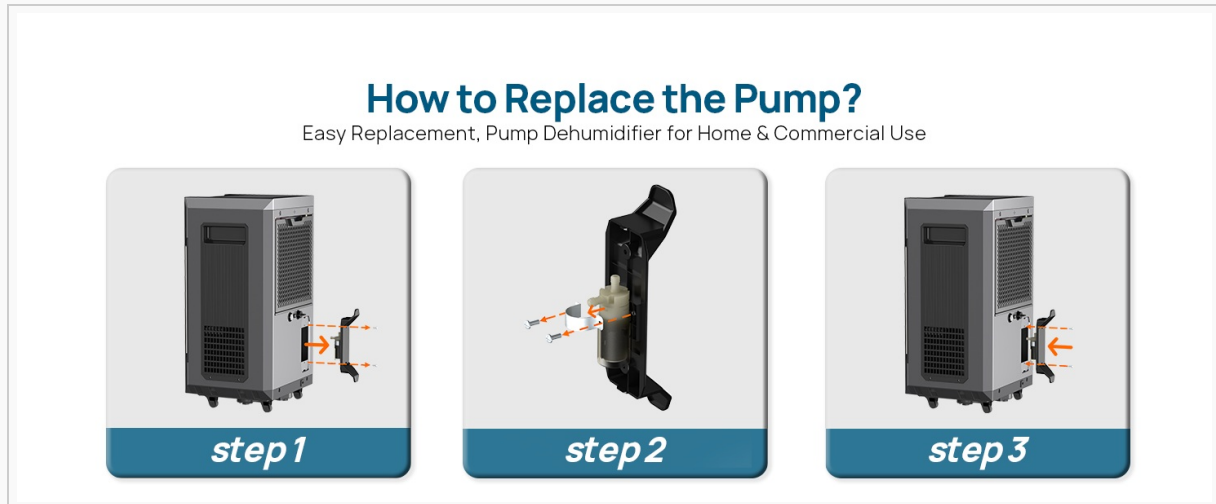


Image: Visual guide demonstrating the two steps to access and remove the MERV-1 filter for cleaning.

Pump Replacement:

In the event of a pump malfunction, the built-in pump can be replaced. Refer to the detailed instructions in the full user manual or contact customer support for assistance.



Image: Three-step visual guide on how to replace the pump in the dehumidifier.

General Cleaning:

Wipe the exterior of the unit with a soft, damp cloth. Do not use harsh chemicals or abrasive cleaners.

6. Troubleshooting

- **Unit does not power on:** Ensure the power cord is securely plugged into a functional, grounded outlet. Check for tripped circuit breakers.

- **Dehumidifier is not collecting water:** Verify that the desired humidity level is set lower than the current room humidity. Check if the filter is clean and not obstructed. Ensure air inlets and outlets are clear.
- **Unit is making unusual noise:** Check if the unit is on a level surface. Inspect for any loose parts or obstructions. If the noise persists, contact customer support.
- **Water leakage:** Ensure drain hoses are properly connected and not kinked or blocked. If using gravity drainage, confirm the hose has a continuous downward slope.
- **Error codes:** Refer to the full user manual for specific error code definitions and troubleshooting steps.

7. Specifications

Specification	Detail
Model	Sandidry Pro 35C
Moisture Removal Capacity	70 PPD (90°F, 90% RH) / 35 PPD (80°F, 60% RH)
Coverage Area	Up to 1,000 sq. ft.
Humidity Range	25% - 80% RH
Item Weight	18.36 kg
Special Features	Adjustable Humidity Control, Automatic Defrost, Built-In Pump, Digital Display, GPP Mode
Included Components	Dehumidifier, Gravity Drain Hose (6.56 ft), MERV-1 Filter, Pump Drain Hose (19.67 ft), User Manual

8. Warranty and Support

The ARGENDON Sandidry Pro 35C Dehumidifier comes with a 5-year limited warranty, demonstrating our commitment to quality and customer satisfaction.

Warranty Coverage:

- **6 Month Parts and Labor:** Includes shipment charges for replacement parts or unit.
- **1 Year Parts and Labor:** Excludes shipment charges to send defective product back for repair or replacement.
- **3-Year Parts and Labor:** Coverage for the refrigeration system only.
- **5-Year Compressor and Coil:** Specific coverage for these critical components.

For additional warranty information, technical assistance, or support, please refer to the contact details provided in the full user manual or visit the official ARGENDON website.



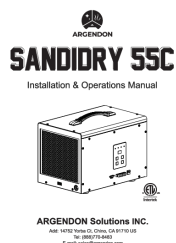
Comprehensive guide for the Argendon XStorm Plus Dehumidifier, covering installation, operation, maintenance, troubleshooting, and warranty. Learn how to set up and use your high-performance dehumidifier for optimal air quality.



User manual for the Argendon Sandidry Pro 35C and 55C dehumidifiers, covering installation, operation, maintenance, and troubleshooting.




Explore the Argendon Guardian 60, a powerful and efficient crawlspace, basement, and commercial dehumidifier. Learn about its key specifications, design features, application areas, and proven performance for moisture control.



Comprehensive installation and operations manual for the ARGENDON SANDIDRY 55C Dehumidifier. Learn about setup, key functions, maintenance, troubleshooting, and warranty information for optimal performance.



This manual provides comprehensive instructions for the installation, operation, maintenance, and troubleshooting of the Argendon Sandidry 55C Dehumidifier. It covers safety precautions, electrical specifications, principle of operation, key functions, indicator lights, remote control usage, diagrams, and warranty information.

	<p>Argendon SHIELD 85P Commercial & Home Dehumidifier User Manual</p> <p>Comprehensive user manual for the Argendon SHIELD 85P commercial and home dehumidifier. It covers essential instructions, principle of operation, installation requirements, key functions, detailed function descriptions, maintenance procedures, error code guide, circuit diagram, and limited warranty information. Learn how to operate, maintain, and troubleshoot your SHIELD 85P dehumidifier for optimal performance.</p>
--	--

Documents - ARGENDON – Sandidry Pro 35C



SANDIDRY PRO 35C/55C
User Manual



Argendon Solutions INC.

Add: 14752 Yorba Ct Chino CA 91710 US
Tel: (888)-770-8483
E-mail: support@argendon.com

[Argendon Sandidry Pro 35C/55C User Manual](#)

User manual for the Argendon Sandidry Pro 35C and 55C dehumidifiers, covering installation, operation, maintenance, and troubleshooting.

lang: **score:32** filesize: 1.74 M page_count: 20 document date: 2025-03-06