



[Manuals.plus](#) /

› [ECOVACS](#) /

› ECOVACS T50 OMNI Robot Vacuum Cleaner Instruction Manual

ECOVACS T50 OMNI

ECOVACS T50 OMNI Robot Vacuum Cleaner Instruction Manual

Model: T50 OMNI

1. INTRODUCTION

This manual provides essential information for the safe and efficient operation of your ECOVACS T50 OMNI Robot Vacuum Cleaner. Please read it thoroughly before use and retain it for future reference.



Image: The ECOVACS T50 OMNI robot vacuum cleaner, its OMNI station, and a smartphone displaying the control app, along with a smartwatch.

2. IMPORTANT SAFETY INFORMATION

Always follow basic safety precautions when using electrical appliances to reduce the risk of fire, electric shock, and injury. This includes:

- Read all instructions before operating the appliance.
- Do not allow children to play with the robot.
- Ensure the power voltage matches the rating label.
- Do not use the robot in wet environments or near flammable materials.
- Keep hair, loose clothing, fingers, and all parts of the body away from openings and moving parts.
- Unplug the appliance from the outlet when not in use and before cleaning.

3. PACKAGE CONTENTS

Verify that all items are present and in good condition upon unpacking:

- Robot Vacuum Cleaner Body

- Main Brush (pre-installed)
- Side Brush (1 piece) *(Note: The side brush is located within the cushioning material in the corner of the box.)*
- Filter (pre-installed)
- OMNI Station Base
- Power Cables (2 pieces)

4. INITIAL SETUP

4.1 Unpacking and Placement

- Remove all packaging materials and protective films from the robot and the OMNI Station.
- Place the OMNI Station on a hard, level surface against a wall, ensuring there is at least 0.5 meters of clear space on both sides and 1.5 meters in front.
- Connect the power cable to the OMNI Station and plug it into a power outlet.

4.2 Charging the Robot

Place the robot onto the OMNI Station. Ensure the charging contacts align. The robot will automatically begin charging. For first-time use, fully charge the robot before operation.

4.3 App Connection and Mapping

- Download the ECOVACS HOME app from your smartphone's app store.
- Follow the in-app instructions to connect your T50 OMNI to your home Wi-Fi network.
- Initiate the first cleaning cycle for the robot to create a detailed map of your home. This map is crucial for efficient navigation and customized cleaning.

インテリジェントナビゲーション

最大100平方メートルのエリアを迅速にマッピングし、
効率的なルート探索と環境に合わせたマップ作成により、
即座に清掃を開始します。



Image: The ECOVACS T50 OMNI robot vacuum cleaner demonstrating its intelligent navigation and mapping capabilities, showing a floor plan being generated.

5. OPERATION

5.1 Cleaning Modes and Features

The T50 OMNI offers various cleaning modes and advanced features for comprehensive floor care:

- **Ultra-Thin Design:** With a height of 8.1cm, the robot can easily clean under low furniture.
- **Powerful Suction:** Features 15000Pa suction power for effective debris removal.
- **TruEdge 2.0 Edge Cleaning:** Mop plates extend to clean within 1mm of edges and corners, ensuring thorough coverage.
- **ZeroTangle 2.0 Brush:** A triple V-shaped brush design minimizes hair tangling, simplifying maintenance.
- **Precise AI-Driven Cleaning:**
 - AI camera detects dirt, adjusting water volume and mop movement.
 - Performs double-cross mopping and re-mops as needed.
 - Carpet recognition sensor lifts mops up to 9mm to prevent wetting.
 - Flexible cleaning modes: "Pass Only," "Vacuum Only," "Same as Floor," and "No-Go Zone."

見えないほこりもきれいに

8.1cmのスリムボディで家具の下をスムーズに進み、隠れたほこりをお掃除。



Image: The ECOVACS T50 OMNI robot vacuum cleaner demonstrating its ultra-thin design, allowing it to clean effectively under low furniture and beds.

隅々まできれいに



Image: A detailed view of the TruEdge 2.0 system, showing how the mop plates extend to clean close to edges and corners, achieving 100% coverage.

徹底的な掃除。絡まりなし

15,000Paの強力な吸引力で、あらゆる表面のほこり、ゴミ、汚れをしっかりと吸い取ります。そして、ZeroTangle 2.0テクノロジーにより、長い髪でも絡まり率は0%に抑えられます。

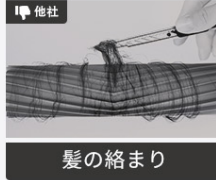


Image: The ZeroTangle 2.0 brush system, illustrating its design to prevent hair tangling, shown with a dog nearby to emphasize pet hair management.

AIVI 3D 障害物回避

AI物体認識に特化したDEEBOTが、障害物を認識して回避し、安全で効率的な清掃を実現します。



Image: The ECOVACS T50 OMNI robot vacuum cleaner using AIVI 3D technology to detect and avoid obstacles like cables and slippers on the floor, ensuring safe and efficient cleaning.

5.2 OMNI Station Functionality

The OMNI Station automates several tasks to provide a hands-free cleaning experience:

- **Automatic Dust Collection:** Empties the robot's dustbin into a sealed bag in the station.
- **45°C Hot Air Drying:** Dries the mop pads after cleaning to prevent odors and mildew.
- **70°C Hot Water Mop Washing:** Automatically washes the mop pads with hot water.
- **Dual-Direction Scraper:** Cleans the base of the OMNI Station automatically.
- **Automatic Detergent Refill:** (*Note: This feature is for the T50 PRO OMNI only. For T50 OMNI, pour detergent directly into the clean water tank.*)
- **Off-Peak Charging:** Optimizes charging times for energy efficiency.
- **Automatic Dirt Detection:** The station detects mop pad dirtiness and instructs the robot to re-mop dirtier areas.



Image: The evolved all-in-one OMNI Station, highlighting its various automated functions including hot air drying, automatic dust collection, and hot water mop washing.



Image: A visual representation of the OMNI Station's mop washing process with 75°C hot water and the subsequent 45°C hot air drying to ensure cleanliness and prevent odors.



Image: The robot vacuum cleaner demonstrating its automatic dirt detection feature, where the OMNI Station identifies dirty mop pads and directs the robot to re-clean soiled areas for a spotless floor.

5.3 Control Options

- **ECOVACS HOME App:** Use the app for full control, including scheduling, setting no-go zones, adjusting cleaning modes, and monitoring cleaning progress.
- **Voice Control:** Compatible with YIKO 2.0 voice assistant, Google Home, and Amazon Alexa for hands-free operation.

簡単操作でラクラク掃除

簡単アクセス

ウィジェットダイナミックアイランド
Apple Watch 対応



YIKO 2.0 呼び掛けてお掃除



アプリ操作



Google Home と Amazon Alexa 対応



6. MAINTENANCE

Regular maintenance ensures optimal performance and extends the lifespan of your robot vacuum cleaner.

6.1 OMNI Station Maintenance

- **Dust Bag Replacement:** Replace the dust bag in the OMNI Station when full. The app will notify you.
- **Water Tanks:** Regularly empty the dirty water tank and refill the clean water tank.
- **Base Cleaning:** The dual-direction scraper automatically cleans the base. Periodically check and wipe down the base if necessary.



Image: The OMNI Station's hands-free base cleaning mechanism, showing the dual-direction scraper automatically rotating to clean the base and dissolve stubborn stains.

6.2 Robot Components Maintenance

- **Main Brush:** Remove and clean the main brush periodically. Use the cleaning tool to cut and remove tangled hair.
- **Side Brushes:** Check side brushes for wear and tear. Replace if damaged.
- **Filter:** Tap the filter to remove dust. Replace the filter every 3-6 months, depending on usage.
- **Sensors:** Wipe all sensors (cliff sensors, anti-collision sensors) with a dry cloth to ensure proper function.

7. TROUBLESHOOTING

If you encounter issues with your T50 OMNI, refer to the following common problems and solutions:

Problem	Possible Cause	Solution
Robot does not start or charge.	Not properly placed on OMNI Station; power cable disconnected.	Ensure robot is correctly docked; check power cable connection to station and outlet.
Poor cleaning performance.	Dustbin full; brushes tangled; filter clogged.	Empty dustbin; clean main and side brushes; clean or replace filter.
Robot gets stuck frequently.	Obstacles on floor; dirty sensors.	Clear floor of cables, toys, and loose items; wipe sensors with a dry cloth.
Mop pads remain wet or develop odor.	Drying function not enabled or insufficient.	Ensure 45°C hot air drying is enabled in the app. Clean mop pads thoroughly.

Problem	Possible Cause	Solution
App shows "Insert detergent into detergent unit" message.	This message is for T50 PRO OMNI.	Ignore this message for T50 OMNI. Pour detergent directly into the clean water tank.

8. SPECIFICATIONS

Feature	Detail
Brand	ECOVACS
Model Name	T50 OMNI
Product Dimensions	35 cm (Length) x 47.7 cm (Width) x 53.3 cm (Height)
Package Dimensions	60 cm x 41 cm x 38.5 cm
Package Weight	15.42 kg
Battery Type	Lithium (included)
Special Features	TruEdge 2.0, ZeroTangle 2.0, Precise AI-Driven Cleaning, Ultra-Thin Design

9. WARRANTY AND SUPPORT

For warranty information and technical support, please refer to the official ECOVACS website or contact their customer service. Keep your purchase receipt as proof of purchase for warranty claims.