

YUHANUS 767637528856

YUHANUS Smart Door Access Control System 600lbs Magnetic Lock Kit User Manual

Model: 767637528856

1. INTRODUCTION

This manual provides detailed instructions for the installation, operation, and maintenance of the YUHANUS Smart Door Access Control System. This system is designed to provide secure and convenient access management for various door types, integrating a 600lbs magnetic lock, power supply, remote controls, and Tuya App compatibility.

2. SAFETY INFORMATION

- Always disconnect power before performing any installation or maintenance procedures.
- Ensure all wiring connections are secure and correctly polarized to prevent damage to the system or electrical hazards.
- Installation should be performed by qualified personnel or with careful adherence to these instructions.
- Do not expose the components to water or excessive moisture.
- Verify local electrical codes and regulations are met during installation.

3. PACKAGE CONTENTS

Please check the package contents against the list below. If any items are missing or damaged, contact customer support.

- 600lbs Magnetic Lock
- Armature Plate
- ZL Bracket
- Power Supply Controller (Model: SP1203)
- Remote Controllers (x2)
- Stainless Steel Exit Button
- Power Cord
- Mounting Hardware (screws, anchors)



Image 3.1: All components included in the YUHANUS Smart Door Access Control System kit.

4. PRODUCT OVERVIEW

4.1 Magnetic Lock

The 600lbs magnetic lock provides strong holding force to secure the door. It features a built-in alarm beeper that activates if the door is not securely closed.



Image 4.1: The 600lbs magnetic lock and its corresponding armature plate.

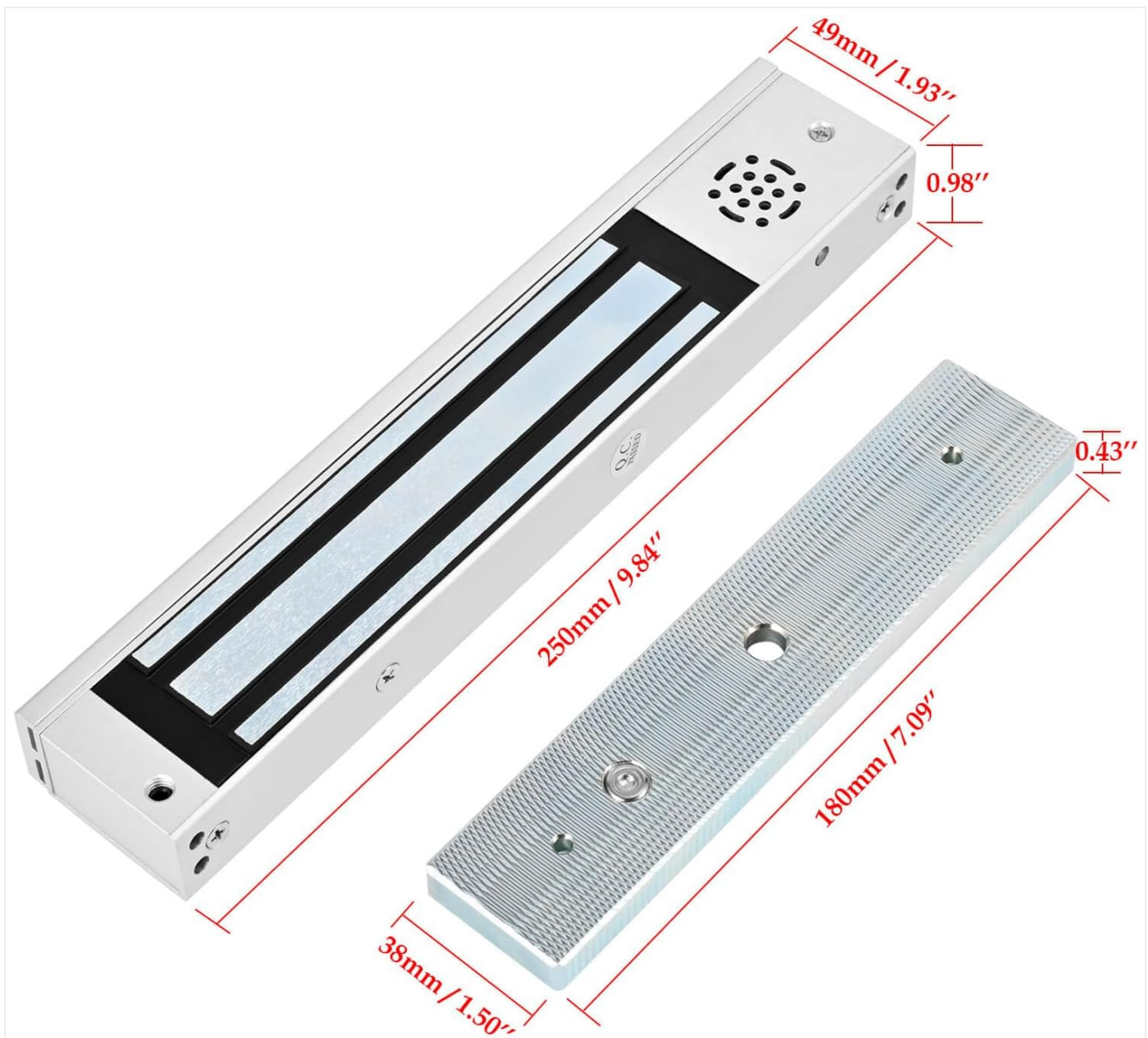


Image 4.2: Dimensions of the magnetic lock and armature plate.

4.2 ZL Bracket

The ZL bracket is designed for inswinging doors, allowing proper alignment and secure mounting of the magnetic lock and armature plate.



Image 4.3: The ZL bracket components.



Image 4.4: Magnetic lock assembly with the ZL bracket.

4.3 Power Supply Controller

The power supply controller (Model SP1203) converts AC 100-240V to DC 12V/3A, providing power to the magnetic lock and other components. It includes terminals for various connections and a timer adjustment for lock release duration (0-15 seconds).



Image 4.5: Power Supply Controller (Model SP1203).

4.4 Remote Controllers

Two remote controllers are included for wireless door unlocking. The system supports up to 30 remote controllers.

4.5 Stainless Steel Exit Button

The exit button provides a simple and reliable method for exiting the secured area from the inside.

5. SETUP AND INSTALLATION

Carefully follow these steps for proper installation. Professional installation is recommended.

5.1 Mounting the Magnetic Lock and ZL Bracket

1. Determine the optimal position for the magnetic lock on the door frame and the armature plate on the door, ensuring proper alignment for an inswinging door using the ZL bracket.
2. Mount the Z-shaped part of the bracket to the door frame.
3. Mount the L-shaped part of the bracket to the Z-shaped part, ensuring the magnetic lock can be securely attached.
4. Attach the magnetic lock to the L-shaped bracket.
5. Mount the armature plate to the door, aligning it with the magnetic lock. Ensure there is a slight gap (approx. 1-2mm) between the lock and the plate when the door is closed to allow for proper magnetic engagement.

5.2 Wiring Diagram and Connections

Refer to the wiring diagram below for all electrical connections. Ensure power is OFF before making any connections.

Wiring Diagram of the Access Control System

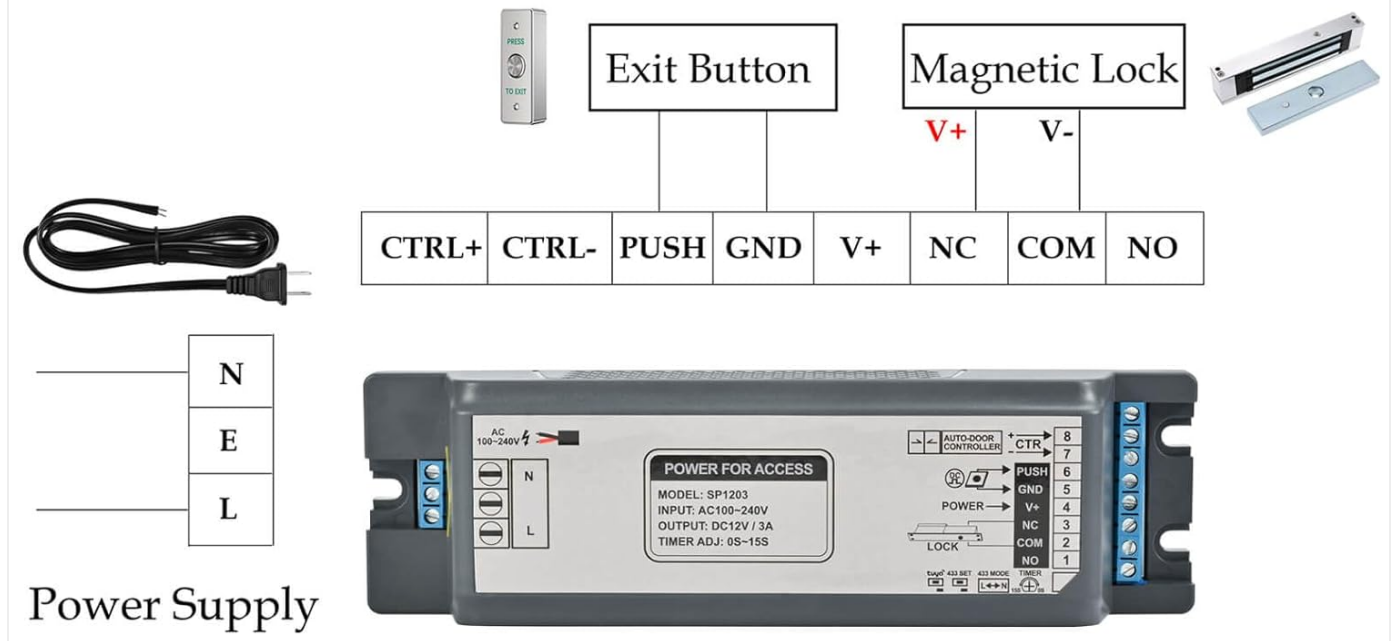


Image 5.1: Wiring Diagram of the Access Control System.

- **Power Supply Connection:** Connect the AC power cord to the N and L terminals on the power supply controller.
- **Magnetic Lock Connection:** Connect the magnetic lock to the V+ and V- terminals on the power supply controller.
- **Exit Button Connection:** Connect the exit button to the PUSH and GND terminals on the power supply controller.
- **Optional Connections:** The power supply controller also provides terminals for NC (Normally Closed), COM (Common), and NO (Normally Open) for integration with other access control devices or auto-door controllers.

5.3 Powering On and Initial Test

1. Once all connections are made, plug in the power supply.
2. The magnetic lock should engage, securing the door.
3. Press the exit button to ensure the lock disengages.
4. Test the remote controllers to ensure they can unlock the door.



Image 5.2: Overview of the installed access control system.

6. OPERATING INSTRUCTIONS

6.1 Using Remote Controllers

Press the button on the remote controller to momentarily disengage the magnetic lock, allowing the door to be opened. The lock will re-engage after the set delay time.

6.2 Using the Exit Button

From the inside, press the stainless steel exit button to disengage the magnetic lock and open the door. The lock will re-engage after the set delay time.

6.3 Tuya App Remote Control

The system is compatible with the Tuya App for remote unlocking and management. Follow the Tuya App's instructions to add and configure the access control system. This allows you to unlock the door from anywhere using your smartphone.

6.4 Adjusting Lock Delay Time

The power supply controller has a timer adjustment knob (0S-15S) to set the duration the magnetic lock remains disengaged after an unlock command. Use a small screwdriver to adjust this knob to your desired delay.

7. MAINTENANCE

- Regularly inspect all wiring for signs of wear or damage.
- Keep the magnetic lock and armature plate clean and free of debris to ensure optimal magnetic contact.
- Test the system periodically (e.g., monthly) to ensure all components are functioning correctly.
- Ensure the power supply unit is in a well-ventilated area and not exposed to extreme temperatures.

8. TROUBLESHOOTING

Problem	Possible Cause	Solution
Magnetic lock does not engage.	No power to the system. Loose wiring connection. Faulty magnetic lock.	Check power supply and connections. Verify all wires are securely connected. Contact customer support if lock is faulty.
Door does not unlock with remote/button.	Remote battery low/dead. Remote not paired. Exit button wiring issue. Power supply issue.	Replace remote battery. Refer to power supply manual for remote pairing instructions. Check exit button wiring. Verify power supply is functioning.
Alarm beeper sounds continuously.	Door not fully closed or aligned. Sensor issue in magnetic lock.	Ensure door is fully closed and armature plate is in full contact with the magnetic lock. Inspect magnetic lock for damage.
Tuya App not connecting.	Wi-Fi connectivity issues. Incorrect app setup. System not in pairing mode.	Check Wi-Fi network and signal strength. Follow Tuya App instructions for device pairing. Ensure the power supply controller is in pairing mode (if applicable).

9. SPECIFICATIONS

Feature	Specification
Magnetic Lock Holding Force	600 lbs
Power Supply Input	AC 100-240V
Power Supply Output	DC 12V / 3A
Lock Delay Timer	0-15 seconds (adjustable)
Remote Control Support	Up to 30 remotes
App Compatibility	Tuya App
Model Number	767637528856
Item Weight	6.96 pounds (total kit)
Package Dimensions	11.97 x 9.61 x 3.11 inches

10. WARRANTY AND SUPPORT

YUHANUS products are designed for reliability and performance. For warranty information or technical support, please refer to the contact details provided with your purchase or visit the official YUHANUS website. Please have your model number (767637528856) and purchase date available when contacting support.

