

TollCor CS-YFA800PW

Instruction Manual

TollCor 5000mAh/28.0V Li-ion Battery Replacement

Model: CS-YFA800PW

1. INTRODUCTION

This manual provides essential information for the safe and effective use of your TollCor 5000mAh/28.0V Li-ion Battery, model CS-YFA800PW. This battery is designed as a replacement for Ferrex R800 Easy and R800 Easy+ devices, compatible with part numbers 862617 and 862618.

Please read this manual thoroughly before initial use and retain it for future reference. Proper handling and maintenance will ensure optimal performance and longevity of your battery.

2. SAFETY INFORMATION

Lithium-ion batteries require careful handling. Adhere to the following safety guidelines to prevent injury, fire, or damage to the battery and device.

- **Do not attempt to disassemble, open, or service the battery pack.** Any attempt to do so will void the warranty.
- **Replace only with the battery pack designated for this product.** Using incompatible batteries may cause damage or safety hazards.
- **Do not crush, puncture, short external contacts, or dispose of in fire or water.** These actions can lead to severe damage, fire, or explosion.
- **Do not store above 60°C (140°F).** High temperatures can degrade battery performance and pose a safety risk.
- **New battery pack must be fully charged before use.** Refer to the "Setup" section for initial charging instructions.
- Read instructions in the operating guide of your device before using the battery.
- Dispose of used batteries according to local regulations. Do not dispose of with household waste.



Image: The TollCor replacement battery, showing its overall design and connection points. This view helps in identifying the correct orientation for charging and installation.

4. OPERATING INSTRUCTIONS

This battery is designed for use with Ferrex R800 Easy and R800 Easy+ robotic lawnmowers. Follow your device's specific instructions for battery installation and removal.

1. **Power Off Device:** Ensure your Ferrex R800 Easy or R800 Easy+ device is powered off and disconnected from any charging station before attempting to install or remove the battery.
2. **Locate Battery Compartment:** Refer to your device's user manual to locate and open the battery compartment.
3. **Remove Old Battery (if applicable):** If replacing an existing battery, carefully disconnect and remove the old battery.
4. **Install New Battery:** Insert the fully charged TollCor replacement battery into the compartment, ensuring the connectors align correctly. Gently push until it clicks into place.
5. **Secure Compartment:** Close and secure the battery compartment cover.
6. **Power On Device:** You can now power on your Ferrex R800 Easy or R800 Easy+ and resume normal operation.



Image: The TollCor replacement battery positioned alongside a Ferrex R800 Easy+ robotic lawnmower, illustrating the intended compatibility and scale.

5. MAINTENANCE

Proper maintenance extends the life and performance of your Li-ion battery.

- **Regular Charging:** Charge the battery regularly, even if not in constant use, to prevent deep discharge.
- **Optimal Storage:** If storing the battery for an extended period, charge it to approximately 50-60% and store it in a cool, dry place (ideally between 10°C and 25°C or 50°F and 77°F). Avoid extreme temperatures.
- **Avoid Full Discharge:** Do not allow the battery to fully discharge frequently, as this can reduce its lifespan.
- **Clean Contacts:** Periodically clean the battery contacts with a dry cloth to ensure good connection.
- **Avoid Physical Damage:** Protect the battery from drops, impacts, and crushing.

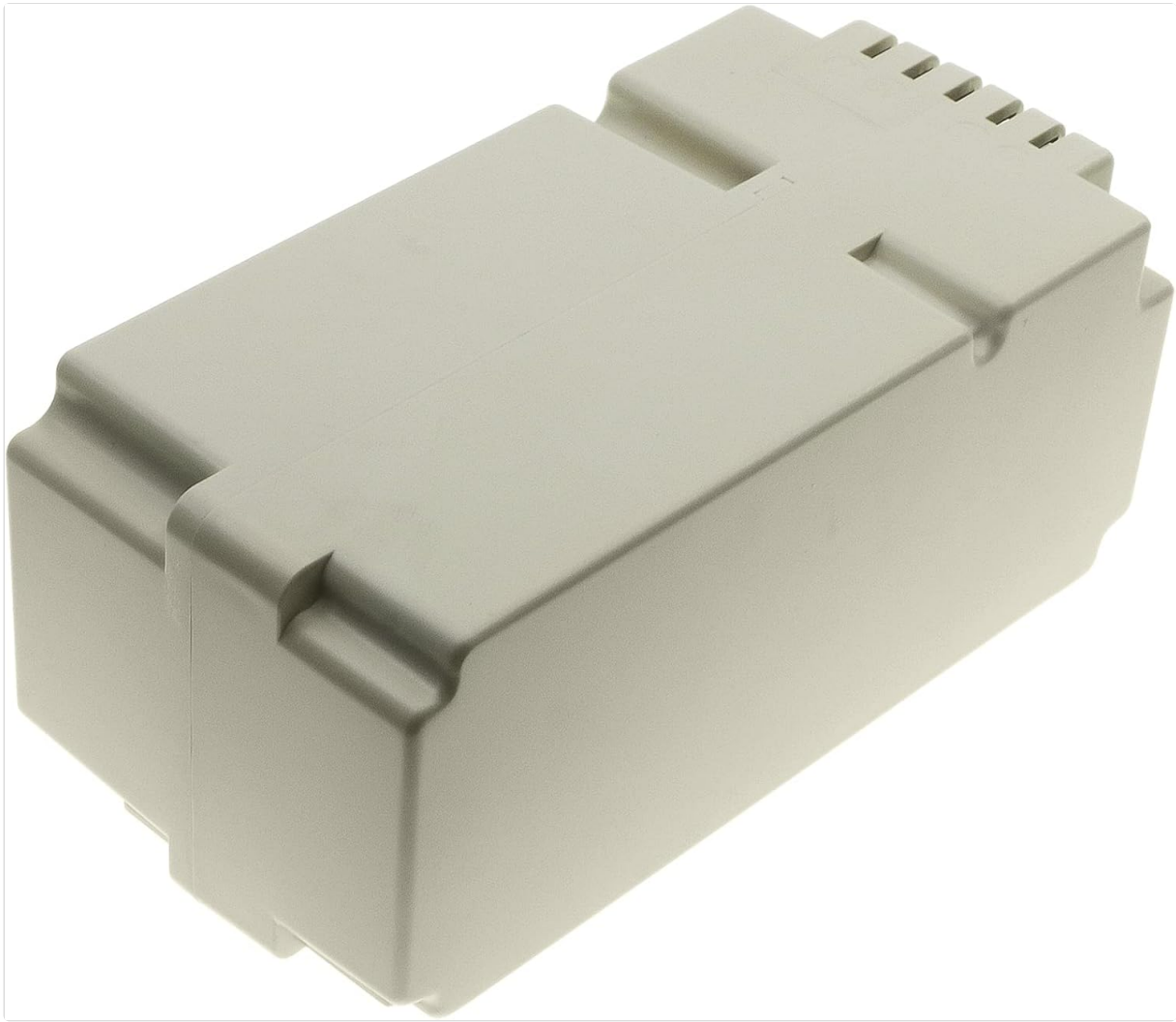


Image: A side profile of the TollCor replacement battery, highlighting its sturdy construction and form factor, which is designed for durability and proper fit within compatible devices.

6. TROUBLESHOOTING

If you encounter issues with your battery, consider the following common solutions:

Problem	Possible Cause	Solution
Battery not charging	Charger not connected, faulty charger, dirty battery contacts, battery too hot/cold.	Ensure charger is properly connected. Try a different charger (if available). Clean battery contacts. Allow battery to reach room temperature.
Short operating time	Battery not fully charged, battery degradation, high power consumption by device.	Ensure battery is fully charged before use. If battery is old, consider replacement. Check device for excessive power draw.
Device not powering on with new battery	Battery not installed correctly, battery not charged, incompatible battery.	Re-install battery, ensuring proper connection. Fully charge the battery. Verify battery compatibility with your device model and part numbers.

If the problem persists after attempting these solutions, please contact customer support.

7. SPECIFICATIONS

Attribute	Value
Model Number	CS-YFA800PW
Compatible Part Numbers	862617, 862618
Battery Type	Li-ion (Lithium Ion)
Voltage	28.0V
Capacity	5000mAh / 140.00Wh
Dimensions (L x W x H)	150.60 x 74.40 x 65.30 mm (approx. 5.93 x 2.93 x 2.57 inches)
Gross Weight	1090.0 g (approx. 2.4 pounds)
Manufacturer	TollCor

8. WARRANTY AND SUPPORT

Your TollCor replacement battery comes with a comprehensive warranty and dedicated support.

- **Money Back Guarantee:** Enjoy a 30-day money-back guarantee from the date of purchase.
- **Warranty Period:** The battery is covered by a 365-day warranty against manufacturing defects.
- **Customer Support:** For any questions, concerns, or warranty claims, please contact us through the platform where you purchased the battery. We aim to provide 24-hour timely feedback.

Please have your purchase details and the battery's model number ready when contacting support.