



Manuals.plus /

› REOKILY /

› REOKILY Vacuum Magnetic Car Phone Holder Instruction Manual

## REOKILY K007

# REOKILY Vacuum Magnetic Car Phone Holder Instruction Manual

Model: K007

## PRODUCT OVERVIEW

---

The REOKILY Vacuum Magnetic Car Phone Holder (Model K007) is an advanced and versatile mounting solution designed for secure phone placement in various environments. Featuring a reinforced vacuum suction cup with a manual twist enhancement and a powerful double-coil N52 Rubidium magnet, it ensures a stable hold even on bumpy roads. Its 360-degree rotation and three-axis stable support allow for optimal viewing angles. Compatible with MagSafe and non-magnetic phones (with included magnetic ring), this holder is ideal for use in cars, gyms, homes, and during travel.



Image: The REOKILY Vacuum Magnetic Car Phone Holder in its compact, foldable state, highlighting its magnetic ring and suction cup base.

## WHAT'S IN THE BOX

- Foldable Magnetic Car Phone Holder
- Adhesive Disc
- Adhesive Magnetic Ring
- Alcohol Wipes

## SETUP AND INSTALLATION

- 1. Prepare the Surface:** Ensure the mounting surface is clean and dry. Use the provided alcohol wipes for optimal adhesion.
- 2. For Smooth Surfaces (Glass, Polished Metal, etc.):**  
Directly attach the suction cup to the desired smooth surface. Press firmly and twist the dial on the base clockwise towards "TIGHT" to engage the vacuum suction and lock it securely in place. The suction becomes firmer with movement.
- 3. For Textured Surfaces (Vinyl Dashboards, Wood Grain, Frosted Glass, etc.):**

Use the included Adhesive Disc. Peel off the protective film from the adhesive disc, place the sticky side down on the textured surface, and press firmly. Allow it to sit for at least 30 minutes to ensure strong bonding before attaching the phone holder. Then, attach the suction cup of the phone holder to the smooth surface of the adhesive disc and twist to lock.

**IMPORTANT: Avoid mounting on fluctuating or uneven surfaces. Not recommended for use on curved surfaces. To check surface smoothness without the adhesive pad: Scratch a circle with your fingernail—if the surface feels smooth and makes no sound, it's suitable for mounting without the adhesive pad.**

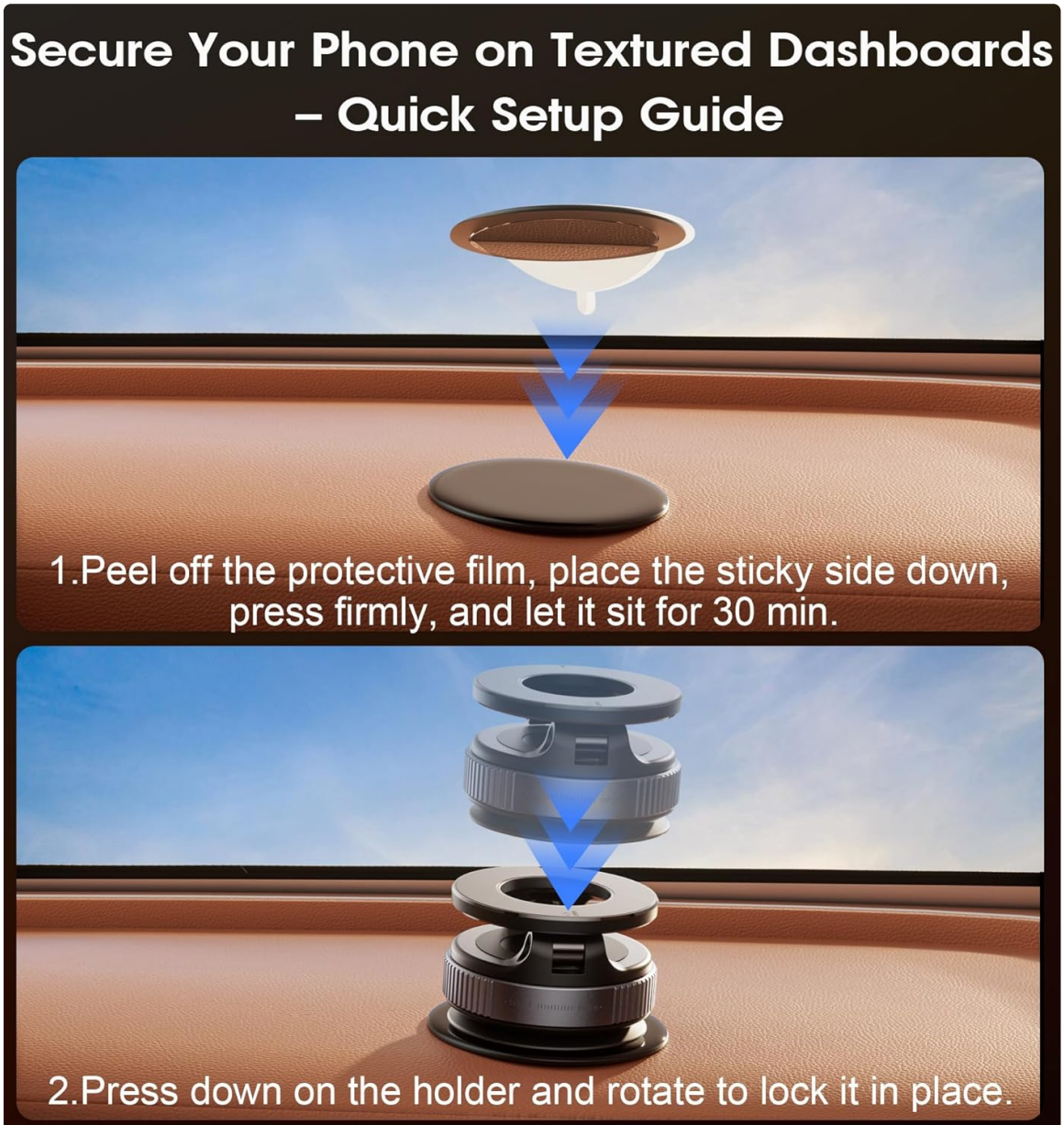


Image: Step-by-step guide for installing the phone holder on textured surfaces using the adhesive disc.

#### 4. Attach Your Phone:

- **For MagSafe Compatible Phones/Cases (iPhone 12-16 series, MagSafe cases):** Simply align your phone with the magnetic ring on the holder. The strong N52 Rubidium magnet will securely hold it in place.
- **For Non-Magnetic Phones/Cases (iPhone 11 & earlier, Android, non-magnetic cases):** Apply the included Adhesive Magnetic Ring to the back of your phone or phone case. Ensure it is centered for optimal magnetic attraction. Then, attach your phone to the holder.

**NOTE: Compatible with most phone cases no thicker than 3mm (0.12 inches). Credit cards in cases must be removed.**



Image: Illustration of magnetic attraction for MagSafe phones and the use of an included metal ring for other devices.

## OPERATING INSTRUCTIONS

- **Adjusting the Angle:** The holder features a 360-degree rotatable joint ball and a three-axis stable support design. This allows you to easily adjust your phone to any desired viewing angle (portrait or landscape) without loosening.
- **Secure Hold:** The strong magnetic hold ensures your phone stays firmly in place, even during high-speed driving, off-road adventures, or on bumpy roads. It is signal-friendly and does not interfere with GPS or charging.
- **Folding for Portability:** The holder is designed to fold compactly for easy carrying and storage when not in use.



# Safe and Secure Mounting with Strong Hold

Stay firmly in place when driving on rough roads



High Speed



Off Road



Bumpy Road

Image: The phone holder maintaining a secure grip in various driving conditions: high speed, off-road, and bumpy terrain.



## Versatile for Multiple Scenarios

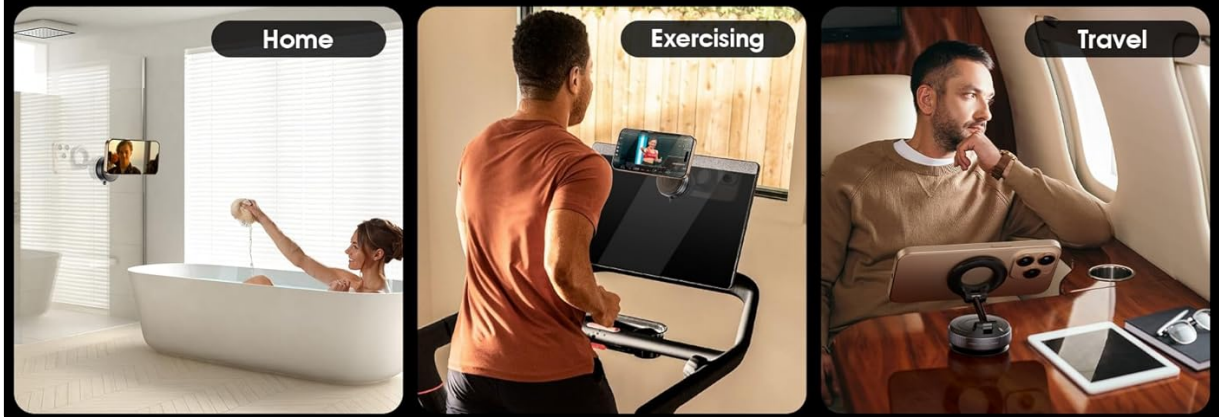


Image: Versatile usage scenarios for the phone holder, demonstrating its adaptability for car, home, gym, and travel environments.

### MAINTENANCE

- **Cleaning the Suction Cup:** The reusable suction cup can be cleaned with water and allowed to air dry to restore its adhesive properties if it becomes dirty or loses grip.
- **General Cleaning:** Wipe the holder with a soft, damp cloth to remove dust and grime. Avoid harsh chemicals or abrasive materials.

### TROUBLESHOOTING

Problem	Possible Cause	Solution
Holder does not stick securely.	Surface is not smooth, clean, or dry; suction cup is dirty.	Clean the surface and suction cup thoroughly. Ensure the surface is smooth. Use the included adhesive disc for textured surfaces. Twist the dial firmly to engage vacuum.
Phone does not attach magnetically.	Phone/case is not MagSafe compatible; magnetic ring is not applied or misaligned; case is too thick.	For non-MagSafe devices, ensure the adhesive magnetic ring is properly applied to your phone or case. Check case thickness (max 3mm). Remove credit cards from case.
Holder wobbles or shifts.	Suction not fully engaged; joint ball not tightened.	Ensure the suction cup is fully locked by twisting the dial. Check the joint ball for proper friction and adjust if necessary to maintain desired angle.

## SPECIFICATIONS

- **Product Dimensions:** 2.36 x 1.57 x 2.36 inches
- **Item Weight:** 3.17 ounces
- **Model Number:** K007
- **Color:** Black
- **Manufacturer:** REOKILY
- **Country of Origin:** China
- **Mounting Type:** Vehicle Mount (versatile for other smooth surfaces)
- **Special Features:** Reinforced vacuum suction cup with twist-lock, 360° multi-angle rotation, strong N52 Rubidium magnet, foldable design, compatible with MagSafe and non-magnetic phones (magnetic iron ring included).
- **Compatible Devices:** iPhone 16 Pro Max/Pro/Plus/16/15 Pro Max/Pro/Plus/15/14 Pro Max/Pro/Plus/14/13 Pro Max/Pro/Plus/14/13 Pro Max/Pro/13/mini/12 Pro Max/Pro/12/mini/11 Pro Max/Pro/11/XS Max/XS/XR/X/8 Plus/8, Samsung Galaxy S22/21/20/10/9/8/7/6, Note 20/10 Plus, A71/51/50/10 models, LG, Motorola, Google, Huawei, Xiaomi, and all other smartphones.

## WARRANTY AND SUPPORT

This REOKILY product comes with a 1000-day warranty. For warranty activation or support, please refer to the warranty activation card included in your product packaging or visit the official REOKILY support website.

For further assistance, please contact REOKILY customer service.