

Symcode MJ-X1L

Symcode MJ-X1L Bluetooth 1D Laser Barcode Scanner User Manual

Model: MJ-X1L | Brand: Symcode

1. INTRODUCTION

This manual provides comprehensive instructions for the Symcode MJ-X1L Bluetooth 1D Laser Barcode Scanner. Please read this manual carefully before using the device to ensure proper operation and to maximize its performance and lifespan.

2. PRODUCT FEATURES

- Integrated 1.5-inch LCD screen for displaying scanning time, connection status, battery level, barcode data, and total scan count.
- Convenient clip-on and magnetic suction design for versatile attachment.
- Multiple connectivity options: Bluetooth, 2.4G Wireless (with USB dongle), and USB Wired.
- Supports instant upload and offline storage modes.
- Configurable settings via screen menu, including time stamp, prefix/suffix, and sound/vibration control.
- Long standby time with a built-in 2000 mAh battery.
- Capable of decoding most 1D barcodes, including Febraban Bank Code, Codabar, Code 11, Code93, MSI, Code 128, EAN-128, Code 39, EAN-8, EAN-13, UPC-A, ISBN, Industrial 25, Interleaved 25, Standard 25, Matrix.
- Effective scanning of damaged, fuzzy, reflective, and smudged barcodes.

3. PACKAGE CONTENTS

Please check the package contents upon receipt. If any items are missing or damaged, contact your vendor.

- Symcode MJ-X1L Barcode Scanner
- USB-C Charging Cable

- USB Wireless Dongle (for 2.4G connection)
- Wrist Strap
- User Manual (this document)

4. SETUP

4.1 Initial Charging

Before first use, fully charge the scanner using the provided USB-C cable. Connect the USB-C end to the scanner and the USB-A end to a power adapter or computer USB port. The battery level indicator on the screen will show charging status.

4.2 Power On/Off

To power on the scanner, press and hold the power button (usually marked with a circle and a vertical line) until the screen illuminates. To power off, press and hold the power button until the screen turns off.

4.3 Removing Protective Film

A protective film is applied to the display screen. For optimal clarity, gently peel off this film before use.

Note: tear off the protective film before using

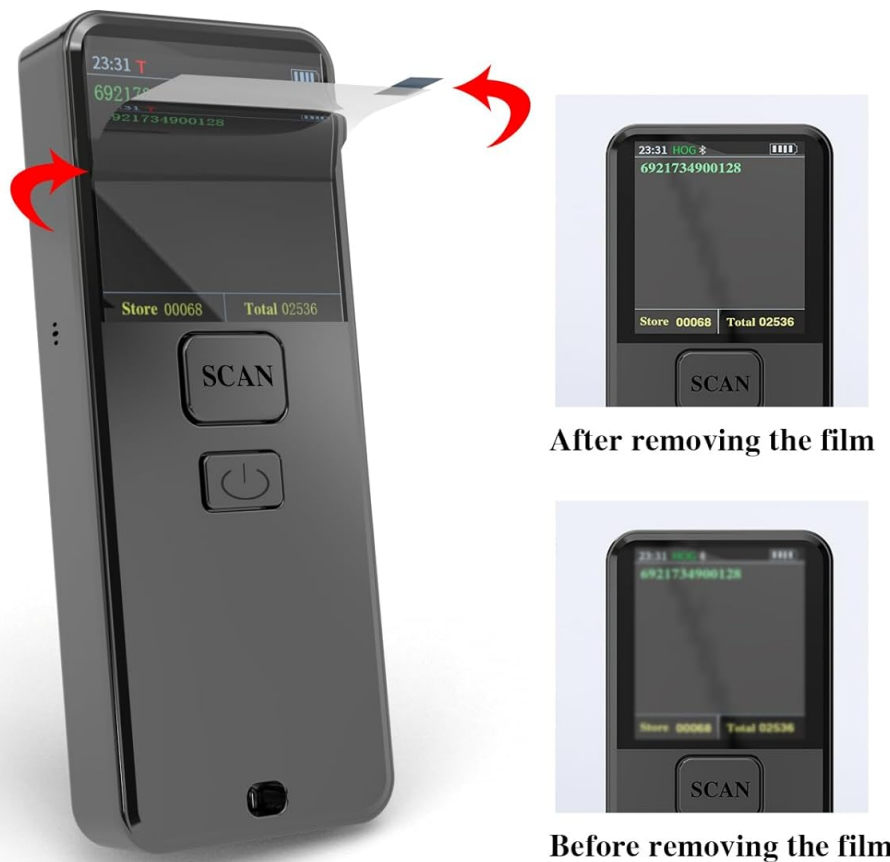


Figure 4.3.1: Illustration of removing the protective film from the scanner's display.

5. OPERATING INSTRUCTIONS

5.1 Basic Scanning

To scan a barcode, point the scanner's laser window at the barcode and press the "SCAN" button. The scanner will emit a laser line and a confirmation sound/vibration (if enabled) upon successful scan. The scanned data will appear on the display.

5.2 Scanning Modes

The scanner supports three primary scanning modes:

- **Key Trigger Mode:** Press the SCAN button for each barcode scan.
- **Continuous Scanning Mode:** The scanner continuously emits the laser and scans barcodes without needing to press the button for each scan.
- **Automatic Sensing Mode:** The scanner activates the laser and scans when a barcode is detected within its field of view.

Refer to the included quick start guide or the full manual (if available from the manufacturer) for specific barcodes to switch between these modes.

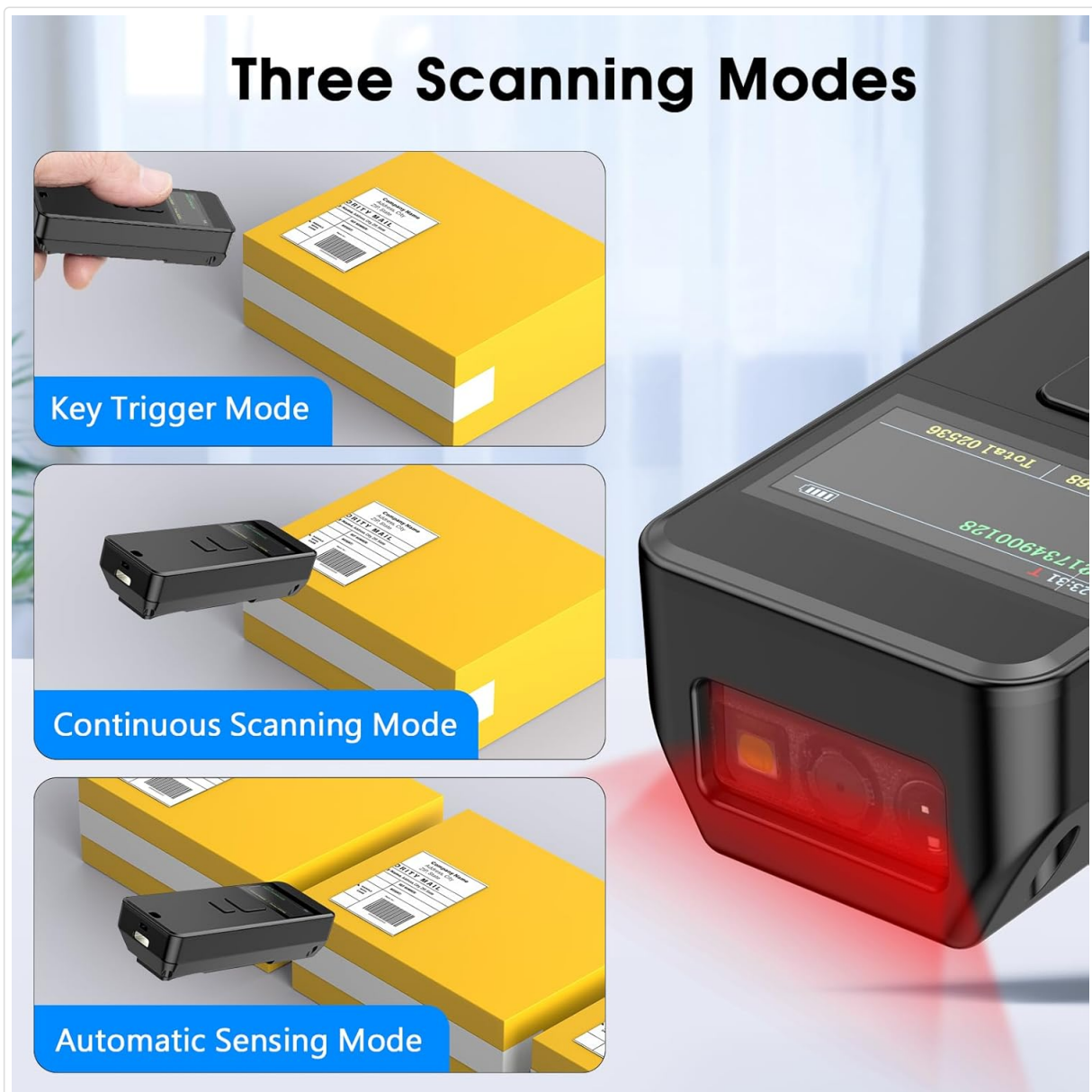


Figure 5.2.1: Overview of the three available scanning modes.

5.3 Data Upload Modes

The scanner offers two data transmission modes:

- **Instant Upload Mode:** Barcode data is transmitted immediately to the connected device after each scan.
- **Offline Storage Mode:** Barcode data is stored internally in the scanner's memory (up to 50,000 barcodes) and can be uploaded later to a connected device.

To switch between these modes, press buttons 1 and 2 simultaneously. Consult the product's configuration guide for detailed instructions on managing stored data.



Figure 5.3.1: Instant Upload Mode vs. Offline Storage Mode.

6. CONNECTIVITY

The Symcode MJ-X1L scanner supports three connection methods:

6.1 Bluetooth Connection

To connect via Bluetooth:

1. Ensure the scanner is in Bluetooth pairing mode (usually by scanning a specific barcode in the manual).

2. On your host device (smartphone, tablet, PC), enable Bluetooth and search for available devices.
3. Select "Symcode Scanner" or a similar name from the list to pair.
4. Once paired, the scanner's display will indicate a successful Bluetooth connection.

Bluetooth wireless range is approximately 15m (49ft) in a barrier environment and 50m (164ft) in a barrier-free environment.

6.2 2.4G Wireless Connection

To connect via 2.4G wireless:

1. Plug the provided USB wireless dongle into an available USB port on your computer.
2. Ensure the scanner is in 2.4G wireless mode (usually by scanning a specific barcode in the manual).
3. The scanner and dongle should automatically pair. The scanner's display will indicate a successful 2.4G connection.

2.4G wireless range is approximately 30m (98ft) in a barrier environment and 150m (492ft) in a barrier-free environment.

6.3 USB Wired Connection

To connect via USB cable:

1. Connect the scanner to your computer using the USB-C cable.
2. The scanner will function as a wired device, and data will be transmitted directly. This mode also charges the device.

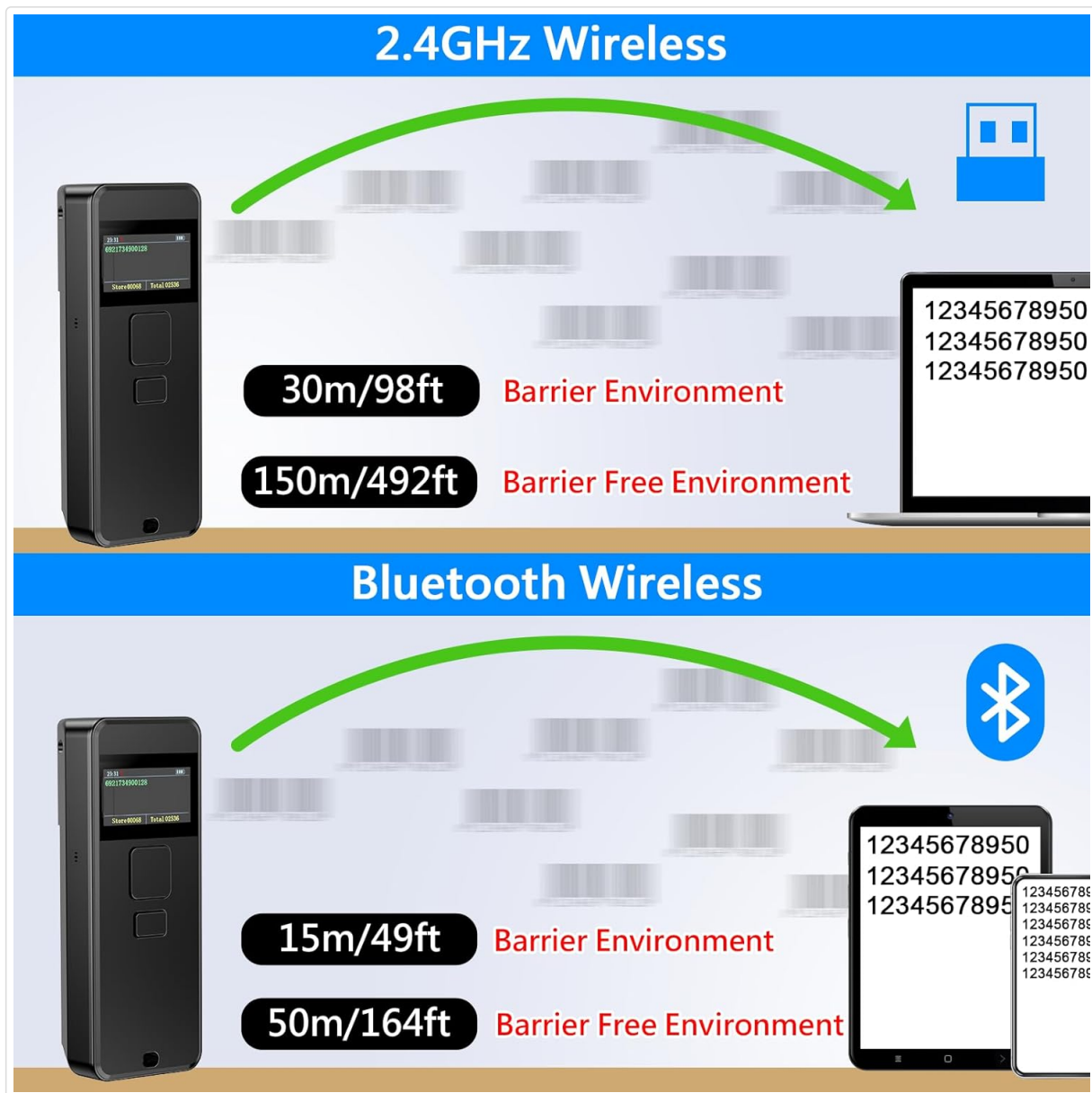


Figure 6.3.1: Wireless Connectivity Ranges.

7. DISPLAY SCREEN MANAGEMENT

The 1.5-inch LCD screen provides real-time information and configuration options:

- **Scanning Time:** Displays the current time.
- **Connection Status:** Indicates whether the scanner is connected via Bluetooth, 2.4GHz wireless, or USB wired.
- **Battery Power Level:** Shows the remaining battery charge.
- **Barcode Data:** Displays the last scanned barcode.
- **Stored Data Amount:** Shows the number of barcodes stored in offline mode.
- **Total Scanning Amount:** Tracks the total number of scans.

Advanced configurations, such as displaying goods names and prices, require uploading specific information to the scanner using a dedicated tool. Contact Symcode support for assistance with this feature.

8. BATTERY AND POWER MANAGEMENT

The scanner is equipped with a 2000 mAh Lithium Polymer battery. A full charge provides approximately 30 days of standby time and 5-7 days of frequent use. The display screen includes a battery level indicator. Charge the device when the battery level is low to ensure uninterrupted operation. The separate physical switch button helps reduce power loss when the device is not in use.

9. MAINTENANCE

- **Cleaning:** Use a soft, dry cloth to clean the scanner's exterior. For the scanning window and display, use a soft, lint-free cloth lightly dampened with water or a mild screen cleaner. Avoid abrasive materials or harsh chemicals.
- **Storage:** Store the scanner in a cool, dry place away from direct sunlight and extreme temperatures.
- **Battery Care:** For long-term storage, charge the battery to about 50% to prolong its lifespan. Avoid fully discharging the battery for extended periods.

10. TROUBLESHOOTING

10.1 Scanner Not Powering On

Ensure the battery is charged. Connect the scanner to a power source using the USB-C cable and allow it to charge for at least 30 minutes before attempting to power it on again.

10.2 Unable to Scan Barcodes

- Verify the scanner is powered on and the laser is active when the scan button is pressed.
- Ensure the barcode is clean, undamaged, and within the scanner's reading range and angle.
- Check if the correct scanning mode is selected (Key Trigger, Continuous, or Automatic Sensing).
- Confirm the barcode type is supported (this is a 1D scanner).

10.3 Connection Issues (Bluetooth/2.4G Wireless)

- **Bluetooth:** Ensure Bluetooth is enabled on your host device and the scanner is in pairing mode. Try unpairing and re-pairing the device.
- **2.4G Wireless:** Ensure the USB dongle is securely plugged into the computer and the scanner is in 2.4G mode. Try re-plugging the dongle.
- Move closer to the host device to rule out range issues.
- Check the scanner's display for connection status indicators.

10.4 Scanned Data Not Appearing on Host Device

- Verify a successful connection between the scanner and the host device.
- Ensure the scanner is in "Instant Upload Mode" if you expect immediate data transmission. If in "Offline Storage Mode," you will need to manually upload the stored data.
- Check that the cursor is active in a text field or application on your host device where you expect the barcode data to appear.

For further assistance, refer to the manufacturer's official support resources or contact the seller.

11. SPECIFICATIONS

Feature	Detail
---------	--------

Model Number	MJ-X1L
Scanning Type	1D Laser Barcode Scanner
Connectivity	Bluetooth, 2.4G Wireless, USB Cable
Display Screen	1.5-inch LCD
Battery	2000 mAh Lithium Polymer (included)
Item Weight	1.87 ounces (approx. 53g)
Package Dimensions	5.39 x 4.25 x 2.13 inches
Compatible Devices	Desktop, Laptop, Smartphone, Tablet
Power Source	Battery Powered
Manufacturer	Symcode

12. WARRANTY AND SUPPORT

For warranty information, technical support, or service inquiries, please contact your original point of purchase or the Symcode customer service directly. Keep your purchase receipt as proof of purchase.