

Reobiux ZR-US

Reobiux 4G LTE Cellular Solar Security Camera User Manual

Model: ZR-US | Brand: Reobiux

1. INTRODUCTION

Thank you for choosing the Reobiux 4G LTE Cellular Solar Security Camera. This advanced outdoor surveillance solution operates independently of Wi-Fi and traditional power sources, utilizing 4G cellular connectivity and solar power for continuous operation. Designed for remote locations, it offers 2K high-definition video, 360° pan-tilt-zoom capabilities, dual night vision modes, PIR motion detection, and two-way audio communication. This manual provides detailed instructions to help you set up, operate, and maintain your camera for optimal performance.

2. PACKAGE CONTENTS

Please verify that all items are present in your package:

- Low-Power Surveillance Camera
- Solar Panel & Solar Bracket
- Instruction Manual
- 3-Meter Power Cord
- Screw Package (for mounting)

3. PRODUCT OVERVIEW

3.1 Key Features

- **4G LTE Cellular Connectivity:** Operates without Wi-Fi, ideal for remote areas.
- **Solar-Powered:** Equipped with a 10,400mAh built-in battery and efficient solar panel for continuous power.
- **2K High-Definition Video:** Captures clear 4MP resolution footage.
- **360° Pan-Tilt-Zoom (PTZ):** Offers 360° rotation and 4X optical zoom for comprehensive coverage.
- **Dual Night Vision Modes:** Provides both color night vision and infrared mode for clear images in low light.

- **PIR Motion Detection:** Advanced detection triggers instant alerts and recordings.
- **Two-Way Audio:** Enables real-time communication through the camera.
- **IP66 Weatherproof:** Durable design withstands various weather conditions.
- **Flexible Storage:** Supports TF cards (up to 128GB) and optional cloud storage.

3.2 Component Identification

Familiarize yourself with the camera's components:



Figure 3.1: Main product view showing the camera, solar panel, and a smartphone displaying the live feed with 4G and 2K Ultra HD indicators.

No WiFi Required & Solar Powered

No Wi-Fi or power cable needed, works anywhere.



Figure 3.2: Illustration of the camera's no Wi-Fi requirement and solar power capability, showing the internal 10400mAh battery and SIM card slot, along with supported carriers.

4MP UHD & PTZ 360° Vision

Crystal Clear Monitoring with Pan-Tilt-Zoom Control



Figure 3.3: Demonstrates the camera's 4MP UHD resolution and 360° pan-tilt-zoom (PTZ) functionality, with a smartphone showing a crystal-clear live view.

Dual Night Vision Modes

Full Color for Detail or Infrared for Stealth — Choose Your View

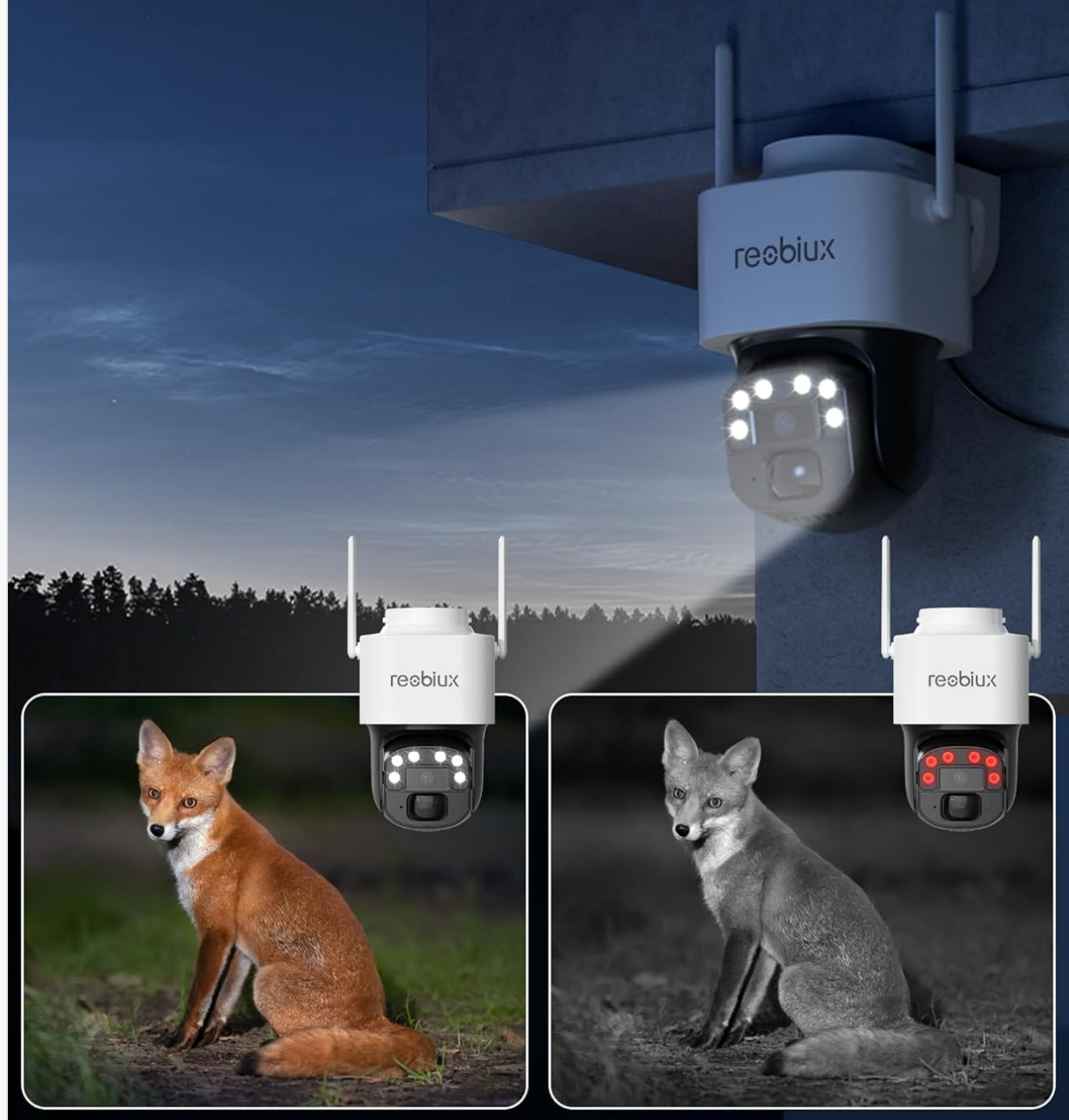


Figure 3.4: Illustrates the dual night vision modes, offering full-color detail or infrared for stealth, with comparative images of a fox at night.



Figure 3.5: Highlights the two-way audio feature, allowing real-time communication, and the family sharing function for granting access to loved ones.

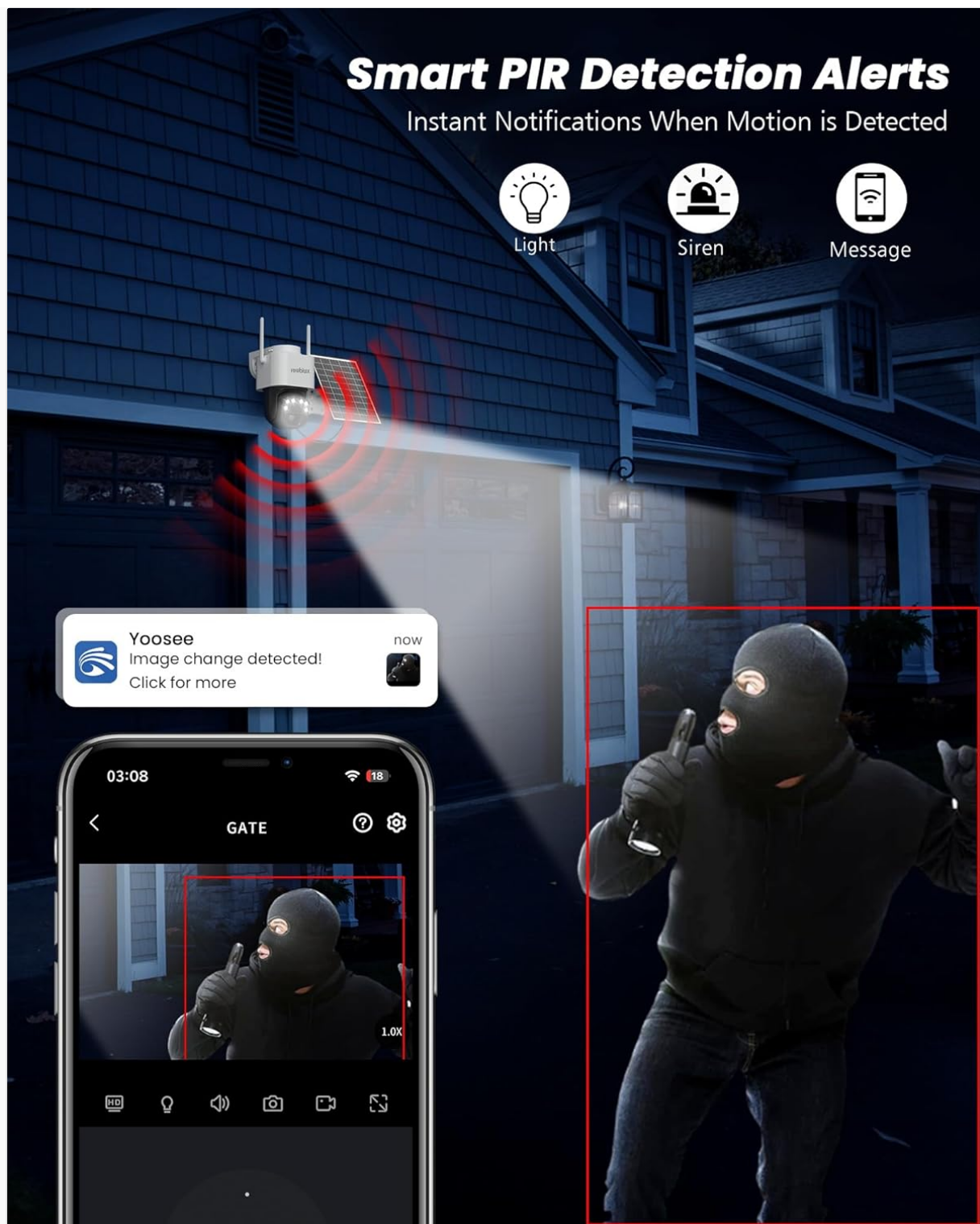


Figure 3.6: Depicts the smart PIR detection alerts, showing instant notifications for detected motion, triggering light, siren, and message alerts.



Figure 3.7: Illustrates the camera's IP66 weatherproof design, built to withstand rain, snow, or heat, with an operating temperature range from -20°C to 50°C.

4. SETUP GUIDE

4.1 SIM Card Installation

1. Locate the SIM card slot on the camera. This is typically found under a protective cover.
2. Insert a compatible 4G LTE Nano SIM card (not included, unless specified) into the slot. Ensure the SIM card is activated with a data plan from a compatible carrier (AT&T, Verizon, T-Mobile).
3. Close the protective cover securely to maintain the IP66 weatherproof rating.

4.2 App Download and Account Creation

1. Download the 'Yoosee' app from your smartphone's app store (iOS App Store or Google Play Store).
2. Open the app and follow the on-screen instructions to create a new account or log in if you already have one.

4.3 Camera Pairing

1. Ensure your camera is powered on. The camera will typically emit an audible prompt indicating it's ready for setup.
2. In the Yoosee app, tap the '+' icon to add a new device.
3. Select the option for '4G Camera' or 'Cellular Camera'.
4. Follow the app's instructions to scan the QR code on the camera or manually enter its device ID.
5. Once connected, you can name your camera and begin viewing the live feed.

4.4 Mounting the Camera

1. Choose a mounting location that receives ample direct sunlight for the solar panel throughout the day.
2. Use the provided screw package and solar bracket to securely mount the solar panel and camera. Ensure the camera has a clear line of sight to the area you wish to monitor.
3. Connect the solar panel's power cord to the camera.

5. OPERATING INSTRUCTIONS

5.1 Live View and Playback

- Open the Yoosee app and select your camera from the device list to access the live view.
- To view recorded footage, navigate to the 'Playback' section within the app. You can select specific dates and times to review events stored on the SD card or cloud.

5.2 Pan-Tilt-Zoom (PTZ) Control

- In the live view interface, use the on-screen directional controls to pan (left/right) and tilt (up/down) the camera.
- Pinch to zoom in or out to utilize the 4X optical zoom feature.

5.3 Two-Way Audio

- Tap the microphone icon in the live view to enable two-way audio. Speak into your phone to transmit audio through the camera's speaker.
- Ensure the speaker icon is enabled to hear audio from the camera's microphone.

5.4 Motion Detection and Alerts

- Access the camera settings in the Yoosee app to configure motion detection sensitivity and alert preferences.
- You can set up push notifications, email alerts, and activate the camera's siren or spotlight upon detection.

5.5 Storage Options (SD Card/Cloud)

- **SD Card:** Insert a TF card (up to 128GB) into the camera's designated slot for local storage of recordings.

- **Cloud Storage:** The Yoosee app offers optional cloud storage subscriptions for secure, off-site video backup. Refer to the app for pricing and plan details.

6. MAINTENANCE

6.1 Solar Panel Care

- Regularly inspect the solar panel for dirt, dust, leaves, or snow accumulation.
- Clean the solar panel surface gently with a soft, damp cloth to ensure maximum sunlight absorption and charging efficiency. Avoid abrasive cleaners.

6.2 Battery Management

- While solar-powered, ensure the camera receives adequate sunlight to keep the battery charged. Prolonged periods of low light may deplete the battery.
- Monitor the battery level through the Yoosee app.

6.3 Firmware Updates

- Periodically check the Yoosee app for available firmware updates. Updates often include performance improvements, new features, and security enhancements.
- Follow the in-app instructions to perform firmware updates. Ensure the camera has sufficient battery power during the update process.

7. TROUBLESHOOTING

If you encounter issues with your camera, refer to the table below for common problems and solutions:

Problem	Possible Cause	Solution
No 4G signal or weak connection	Poor cellular coverage; SIM card not activated or inserted incorrectly.	Relocate camera to an area with better 4G signal. Verify SIM card activation and reinsert it correctly. Contact your cellular provider.
Camera offline in app	No power; 4G signal loss; app issue.	Check solar panel for obstructions and ensure sufficient sunlight. Verify 4G signal. Restart camera and app.
Poor video quality	Lens dirty; low light conditions; network bandwidth.	Clean the camera lens. Ensure adequate lighting for optimal night vision. Check 4G data speed.
Motion detection not working or false alarms	Incorrect sensitivity settings; environmental factors.	Adjust PIR sensitivity in app settings. Ensure camera is not pointed at moving foliage or busy roads.
Battery not charging	Insufficient sunlight; dirty solar panel; faulty connection.	Ensure solar panel is in direct sunlight for several hours daily. Clean the solar panel. Check cable connection between solar panel and camera.

8. TECHNICAL SPECIFICATIONS

Feature	Specification
Model Name	ZR-US
Indoor/Outdoor Usage	Outdoor
Power Source	Solar Powered
Connectivity Protocol	Cellular
Video Capture Resolution	2K (4MP Effective Still Resolution)
Controller Type	Yoosee App
Mounting Type	Wall Mount
Wireless Communication Technology	Cellular (No Wi-Fi Needed)
Viewing Angle	355 Degrees (Pan)
Night Vision Range	30 Meters
Material	Acrylonitrile Butadiene Styrene (ABS)
Water Resistance Level	IP66 Waterproof
Flash Memory Type	SD (Supports up to 128GB)
Optical Zoom	4x
Battery Capacity	10,400mAh (Built-in)
Operating Temperature	-20°C to 50°C
Product Dimensions	10.11 x 8.35 x 5.7 inches
Item Weight	3.43 pounds

9. WARRANTY AND SUPPORT

Reobiux products are designed for reliability and performance. This product comes with a standard manufacturer's warranty. Please refer to the warranty card included in your package or visit the official Reobiux website for detailed warranty terms and conditions.

For technical support, troubleshooting assistance, or any inquiries regarding your Reobiux camera, please contact our customer service team. Contact information can typically be found on our official website or within the Yoosee app's 'Help' or 'Support' section.

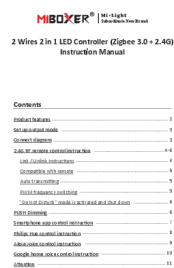
We are committed to providing excellent support to ensure your satisfaction with our products.

BESDERSEC TD3 Solar Security Camera Quick Start Guide

A comprehensive quick start guide for the BESDERSEC TD3 Solar Security Camera, covering setup, app connection, features, troubleshooting, and important statements.

[Festo DGE Toothed Belt Axes | Precision Linear Motion Systems](#)

Explore the Festo DGE series of toothed belt axes, offering high precision, adaptability, and a wide range of configurations for demanding automation, handling, and assembly tasks. This document provides comprehensive technical data, ordering information, and accessory details.



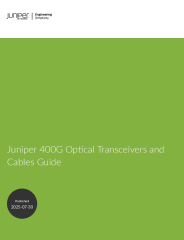
MiBoxer 2 Wires 2 in 1 LED Controller (Zigbee 3.0 + 2.4G) Instruction Manual

Instruction manual for the MiBoxer 2 Wires 2 in 1 LED Controller, featuring Zigbee 3.0 and 2.4G connectivity. This guide covers product features, setup, remote control, app integration (Tuya Smart, Philips Hue), and voice control (Alexa, Google Home).



[Manuale di istruzioni MIBOXER 2 fili 2 in 1 Controller LED \(Zigbee 3.0 + 2.4G\)](#)

Questo manuale utente fornisce istruzioni dettagliate per il controller LED 2 fili 2 in 1 MIBOXER, compatibile con Zigbee 3.0 e 2.4G. Include informazioni su caratteristiche, configurazione, controllo tramite telecomando RF, app per smartphone (Tuya Smart, Philips Hue) e controllo vocale (Alexa, Google Home), oltre a importanti avvertenze di sicurezza.



Juniper 400G Optical Transceivers and Cables Guide

Explore Juniper Networks' 400G optical transceivers and cables with this comprehensive guide. Learn about QSFP-DD form factors, ZR/ZR+ optics, PAM4 modulation, DSP, FEC, installation, and maintenance for high-speed data center and metro networking solutions.



[Ensoniq MR/ZR Getting Started Guide: Synthesizer and Sequencer Manual](#)

A comprehensive guide to getting started with the Ensoniq MR/ZR series synthesizers and workstations, covering sound selection, sequencing, drum machine operation, MIDI integration, external sequencers, disk functions, and troubleshooting.