

KTS HD-Cure

KTS Handheld Laser Therapy Device User Manual

Model: HD-Cure

Brand: KTS

1. INTRODUCTION

The KTS HD-Cure Handheld Laser Therapy Device is designed to provide targeted red light and infrared therapy for muscle and joint pain relief. Utilizing advanced laser diode technology, this device offers a non-invasive and portable solution for personal wellness. Its versatile design allows for both handheld and strap-on applications, ensuring comfort and convenience during use.

2. SAFETY INFORMATION

- Always wear the provided protective goggles before operating the device to protect your eyes from direct laser exposure.
- Do not look directly into the laser light source.
- Keep the device out of reach of children and pets when not in use.
- Consult a healthcare professional before use if you have any pre-existing medical conditions, are pregnant, or have implanted medical devices.
- This device is for personal use and is not intended to diagnose, treat, cure, or prevent any disease.
- Ensure the device is clean and dry before and after each use.

3. PRODUCT FEATURES

The KTS HD-Cure device incorporates several features for effective and convenient therapy:

- **Dual Wavelength Therapy:** Features 12 x 650nm red light diodes and 4 x 808nm near-infrared light diodes.
 - 650nm red light is absorbed by the skin, promoting blood circulation.
 - 808nm near-infrared light penetrates deeper tissues for joint and muscle pain relief. Note: 808nm light is invisible to the human eye but can be seen through a phone camera.
- **Adjustable Timer:** Customizable treatment sessions with 5, 10, 15, or 20-minute timer settings.

- **Multiple Energy Levels:** Three energy levels (L1, L2, L3) to adjust intensity based on user preference and therapeutic needs.
- **TENS Pulse Function:** Integrates low-intensity electric pulse for enhanced therapeutic effect.
- **Portable and Wearable Design:** Compact and lightweight, with included straps and a unit holder for hands-free application on various body parts.

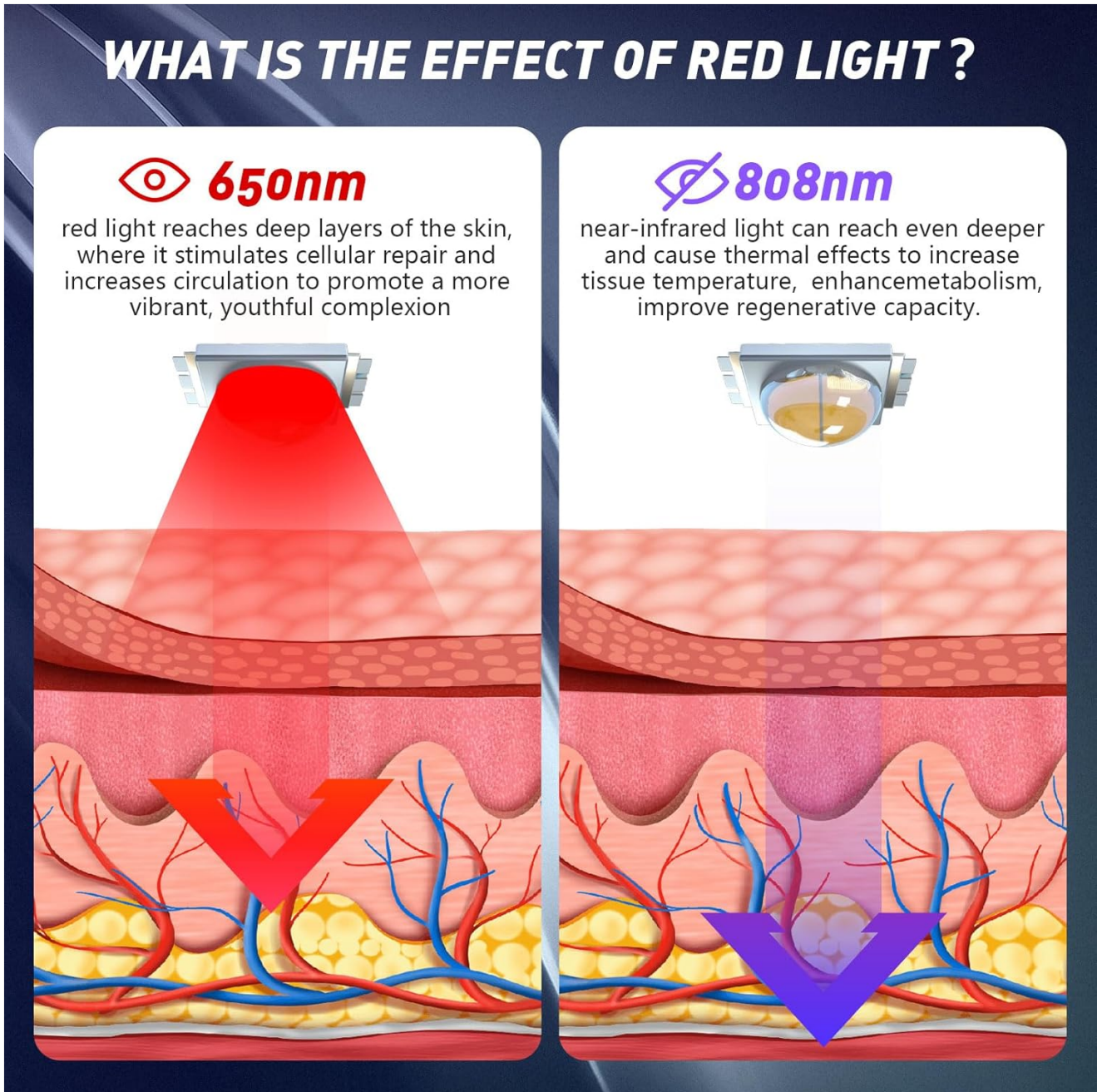


Figure 3.1: Illustration of Red Light (650nm) and Near-Infrared Light (808nm) Penetration.



Figure 3.2: Multifunction Design of the KTS HD-Cure Device.

4. PACKAGE CONTENTS

Please verify that all items are present in your package:

- Main Host Device (1)
- USB Cable (1)
- Charger (1)
- Protective Goggle (1)
- Wipe Cloth (1)
- Unit Holder (1)
- Straps (2)
- Instruction Manual (1)

PACKAGE LIST



Figure 4.1: KTS HD-Cure Device Package Contents.

5. SETUP

Before first use, ensure the device is fully charged. Connect the USB cable to the device and the charger, then plug into a power outlet. The charging indicator will show the charging status.

Attaching the Unit Holder and Straps:

For hands-free operation, insert the main host device into the provided unit holder. Secure the unit holder to the desired body part using the adjustable straps. This allows for stable and consistent application during therapy sessions.



Figure 5.1: Device usage: handheld and with strap.



Figure 5.2: Strap design allows for use in various activities.

6. OPERATING INSTRUCTIONS

Follow these steps for optimal use of your KTS HD-Cure device:

1. **Wear Goggles:** To protect your eyes, always wear the provided protective goggles before turning on the device.
2. **Power On:** Press and hold the On/Off button to turn on the device. The display will illuminate.
3. **Set Time and Intensity:** Use the control buttons to select your desired treatment time (5/10/15/20 minutes) and energy level (L1, L2, L3).
4. **Start Therapy:** Short press the power button again to begin the therapy session.
5. **Apply Device:**

- For handheld use, slowly move the device over the target area.
- For strap-on use, ensure the device is securely placed in the unit holder and strapped to the area needing treatment.

6. **Session Completion:** The device will emit a beep sound when the set therapy time is complete.

7. **Recommended Usage:** For best results, it is recommended to use the device twice a day for 20-30 minutes per session. A typical course of treatment is 10 days. Significant changes may be observed after two courses of treatment.



Figure 6.1: Step-by-step Operating Guide.

Application Areas:

The device can be applied to various parts of the body for pain relief and recovery, including but not limited to:

- Neck
- Knee
- Back
- Shoulder
- Ankle
- Elbows
- Hand
- Leg
- Also suitable for pets (e.g., for physiotherapy, joint pain, injury recovery, muscle strength, skin conditions).

WIDELY USED IN HUMANS AND PETS



● Neck



● Knee



● Back



● Elbows



● Pets



● Horse



Figure 6.2: Wide range of application areas for humans and pets.

COLD LASER THERAPY RELIEVE BODY PAIN



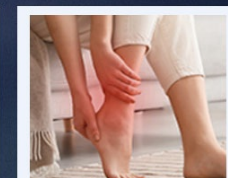
Knee



Waist



Shoulder



Ankle



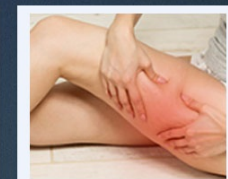
Elbows



Back



Hand



Leg muscle

Figure 6.3: Cold Laser Therapy for Body Pain Relief.



Figure 6.4: Device application for pet care.

Official Product Videos:

Your browser does not support the video tag.

Video 6.1: Overview of the 2025 New Upgraded Laser Handheld Device. This video demonstrates the device's appearance and basic functions.

Your browser does not support the video tag.

Video 6.2: Detailed features and usage of KTS Handheld Laser Therapy Devices. This video provides a comprehensive look at the device's capabilities and how it can be applied.

7. MAINTENANCE AND CARE

- **Cleaning:** Use the provided wipe cloth or a soft, dry cloth to clean the device after each use. Do not use abrasive cleaners or immerse the device in water.
- **Storage:** Store the device in a cool, dry place, away from direct sunlight and extreme temperatures.
- **Battery Care:** To prolong battery life, avoid fully discharging the battery frequently. Charge the device regularly, even if not in constant use.

8. TROUBLESHOOTING

Problem	Possible Cause	Solution
Device does not turn on.	Low battery or not charged.	Charge the device fully using the provided charger and USB cable.
Laser light is not visible.	808nm light is invisible to the naked eye.	This is normal for the 808nm wavelength. You can verify its operation by viewing it through a phone camera. Ensure 650nm lights are visible.
Device beeps continuously.	Therapy session completed.	This indicates the set treatment time has finished. Turn off the device if no further therapy is needed.
No sensation from TENS pulse.	Intensity level too low or poor contact.	Increase the energy level (L1-L3). Ensure good contact with the skin.

9. SPECIFICATIONS

- **Model:** HD-Cure
- **Laser Wavelengths:** 650nm (Red Light), 808nm (Near-Infrared Light)
- **Number of Diodes:** 12 x 650nm, 4 x 808nm
- **Timer Settings:** 5, 10, 15, 20 minutes
- **Energy Levels:** L1, L2, L3
- **Power Source:** Rechargeable Battery (1 A battery included)
- **Dimensions:** Approximately 9.53 x 7.24 x 2.48 inches
- **Weight:** Approximately 1 Pound
- **Manufacturer:** YJT
- **Country of Origin:** China

10. WARRANTY AND SUPPORT

KTS provides a one-year after-sales guarantee for this product. If you encounter any problems or have questions regarding the KTS HD-Cure Handheld Laser Therapy Device, please contact our customer service team for assistance. Please refer to the contact information provided in your product packaging or on the official KTS website.

Legal Disclaimer: Statements regarding dietary supplements have not been evaluated by the FDA and are not intended to diagnose, treat, cure, or prevent any disease or health condition.