

SJCAM SJ20-standard

SJCAM SJ20 Action Camera User Manual

Model: SJ20-standard | Brand: SJCAM

1. SETUP

1.1. Unboxing and Package Contents

Upon opening your SJCAM SJ20 Action Camera package, ensure all components are present. The standard combo typically includes:

- Camera body
- Waterproof case
- Frame mounts (2 types)
- USB cable
- Cleaning cloth
- Adhesive mounts
- Mounting screws and adapters



Image: Overview of the SJCAM SJ20 Standard Combo package contents, including the camera, various mounts, and accessories.

1.2. Battery Installation and Charging

The SJCAM SJ20 comes with an 800mAh in-built battery and an additional 1850mAh detachable battery. To install the detachable battery, align it with the base of the camera and slide it into place until it clicks securely. To charge the camera, connect it to a power source using the provided USB cable. The camera supports quick charging and can be recharged while recording.

1.3. Initial Power On

To power on the camera, press and hold the power button located on the top of the device. The main display will illuminate, indicating the camera is ready for use.

1.4. Connecting to the SJCAM Zone App

The SJCAM SJ20 supports 5G WiFi connectivity for seamless integration with the SJCAM Zone app. This allows for remote control, live preview, video download, and sharing. Follow these steps to connect:

1. Power on the SJCAM SJ20 camera.
2. On the camera's touchscreen, swipe down from the top to access the quick settings menu.
3. Tap the WiFi icon to enable WiFi and display the QR code.

4. Open the SJCAM Zone app on your smartphone.
5. In the app, select "Connect Camera" and then "Scan code connection".
6. Use your phone's camera to scan the QR code displayed on the SJ20's screen.
7. Once scanned, the app will connect to your camera.

For a visual guide on connecting to the app, please refer to the video below:

Video: Instructions on how to connect the SJCAM SJ20 to the SJCAM Zone mobile application via WiFi and QR code scanning.

2. OPERATING THE CAMERA

2.1. Dual-Lens System

The SJCAM SJ20 features a professional dual-aperture camera system with F2.0 and F1.3 lenses. The F2.0 lens is optimized for daylight, providing stable HD and sharpness. The F1.3 lens is designed for low-light conditions, maximizing light intake for vibrant night videos.



Image: Illustration of the SJCAM SJ20's dual-lens system, showing the F2.0 Day Lens and F1.3 Low Light Lens. For enhanced night vision, the F1.3 large aperture lens captures more light, improving image quality and detail in dark environments.

Flagship Night Lens

The SJ20's F1.3 large aperture lens captures more light at night, and with its flagship sensor, improves nighttime image quality and detail across the board, making it one of the best in action camera night photography



Image: Demonstration of the SJCAM SJ20's Flagship Night Lens performance in low light conditions.

Video: A short demonstration of the SJCAM SJ20's Super Nightlight Lens capability.

2.2. Advanced Dual Stabilization

The SJ20 incorporates a 6-axis gyroscope and Electronic Image Stabilization (EIS) to detect and correct camera shake, ensuring smooth video footage even in dynamic environments.

OIS+EIS Dual Stabilisation

Adopt high precision 6-axis gyro sensor, more accurate correction of object offset and jitter, support gyro correction.

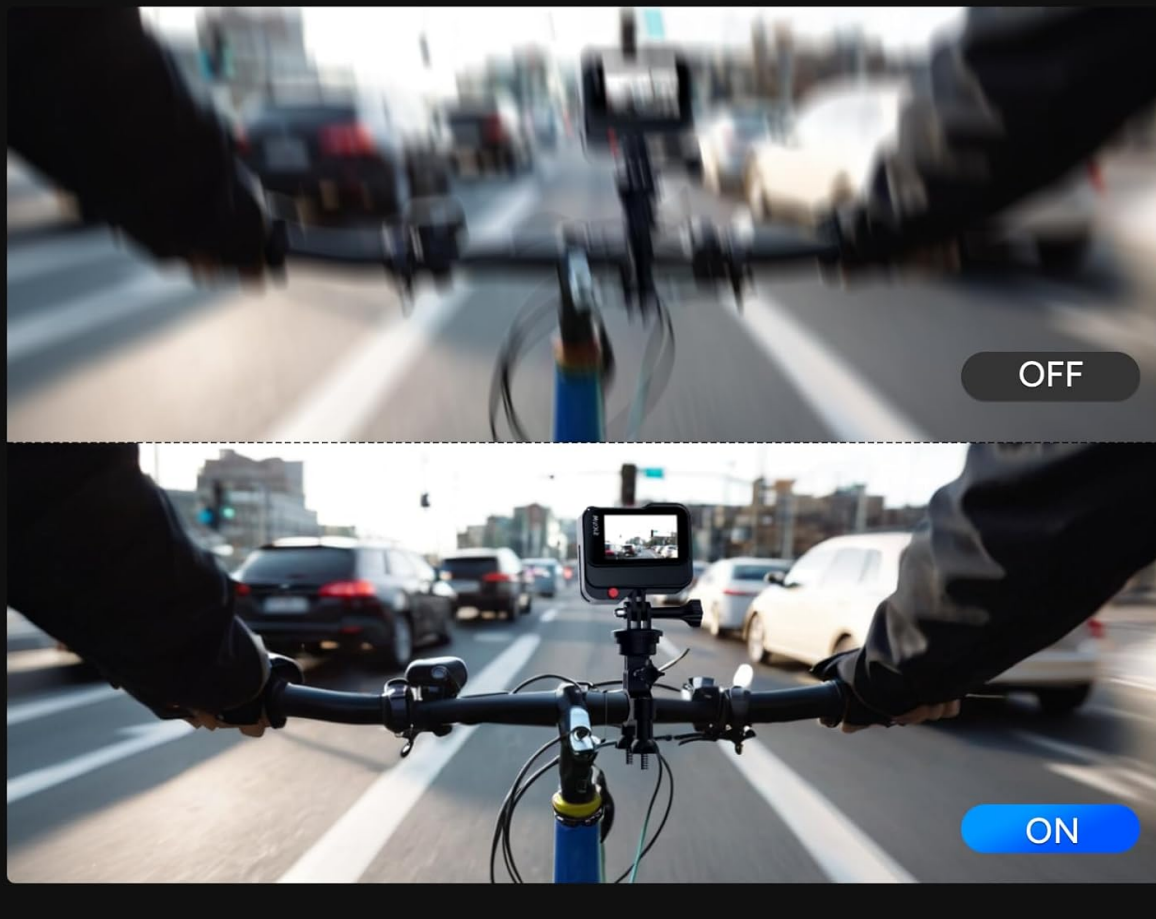


Image: Comparison showing video stability with OIS+EIS Dual Stabilisation turned off versus on, demonstrating reduced blur and shake.

2.3. 4K HDR Recording

Capture stunning detail with 4K HDR (High Dynamic Range) video recording. HDR enhances the contrast and color accuracy in both bright and dark areas of your footage.

4K HDR

Ultra-clear 4K time-lapse video, loop recording and slow motion to record all your wonderful moments. SJ20 Camera support 4K、 2K、 1080p video capture

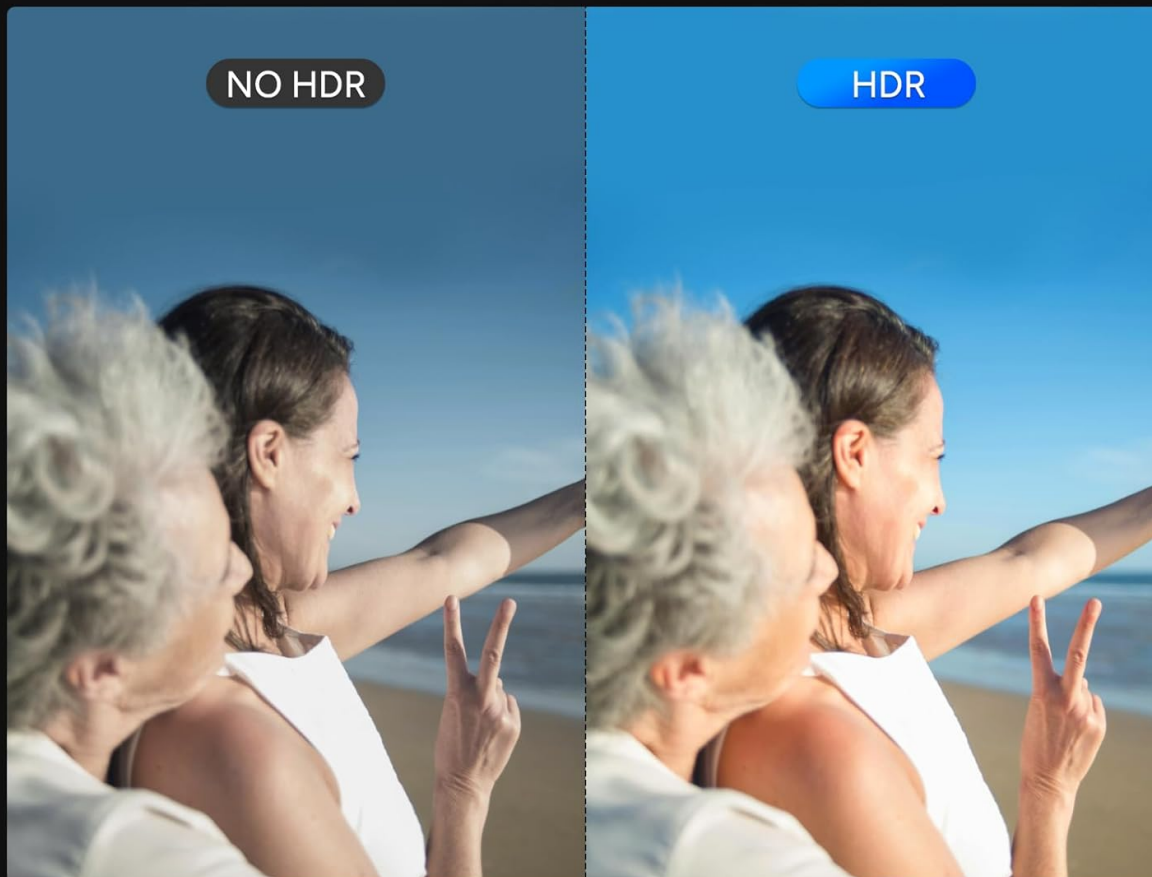


Image: Side-by-side comparison of video quality with and without 4K HDR enabled on the SJCAM SJ20.

2.4. Waterproof Capability

The SJ20 is waterproof up to 40 meters when used with its included waterproof housing, making it suitable for underwater shooting and water sports.

Under Waterproof Camera

Waterproof up to 40 metres and supports underwater shooting mode for better ambient colours.



Image: Diagram illustrating the SJCAM SJ20's waterproof depth rating of up to 40 meters with the waterproof case.

2.5. Ultra-Wide Angle and Digital Zoom

The camera features a 154° ultra-wide-angle lens, allowing you to capture expansive scenes. It also supports 8x digital zoom to focus on distant subjects.

Ultra-Wide Angle and 8X Digital Zoom

Larger angle,Wider perspective



Image: Visual representation of the 154° ultra-wide angle and the effect of 2X, 6X, and 8X digital zoom.

2.6. Shooting Modes

The SJ20 offers a variety of shooting modes to enhance your creative possibilities:

- **Video Modes:** 8X Slow Motion, Pre-Record, Live Streaming, Time Lapse, Delay-Record, Car Mode.
- **Photo Modes:** Long Exposure Photo, Burst Photo, Timing Photo, Interval Photo.

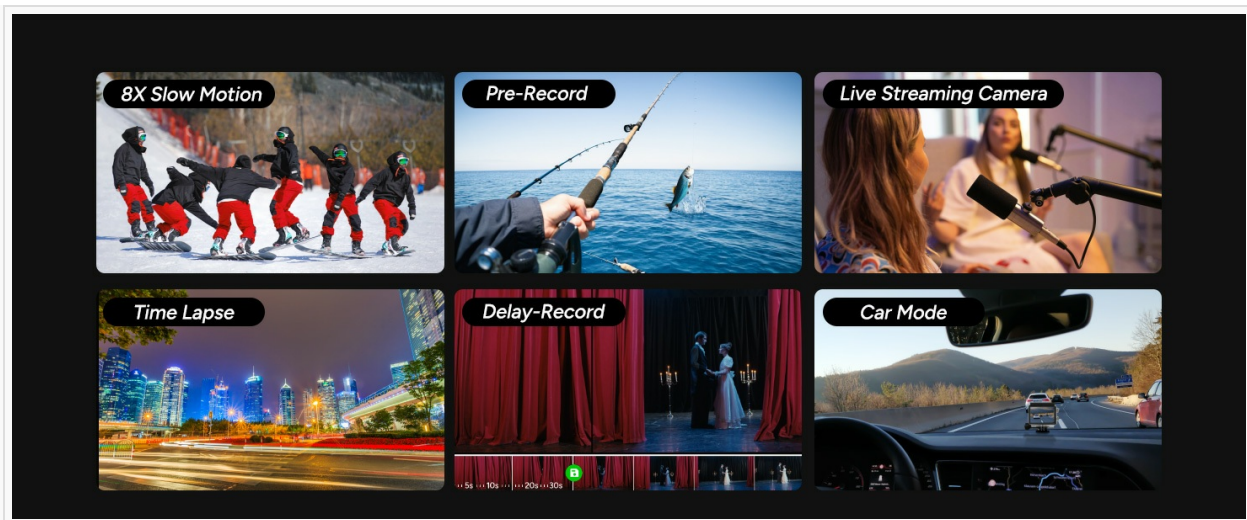


Image: Examples of various video modes available on the SJCAM SJ20, including Slow Motion, Pre-Record, and Live Streaming.

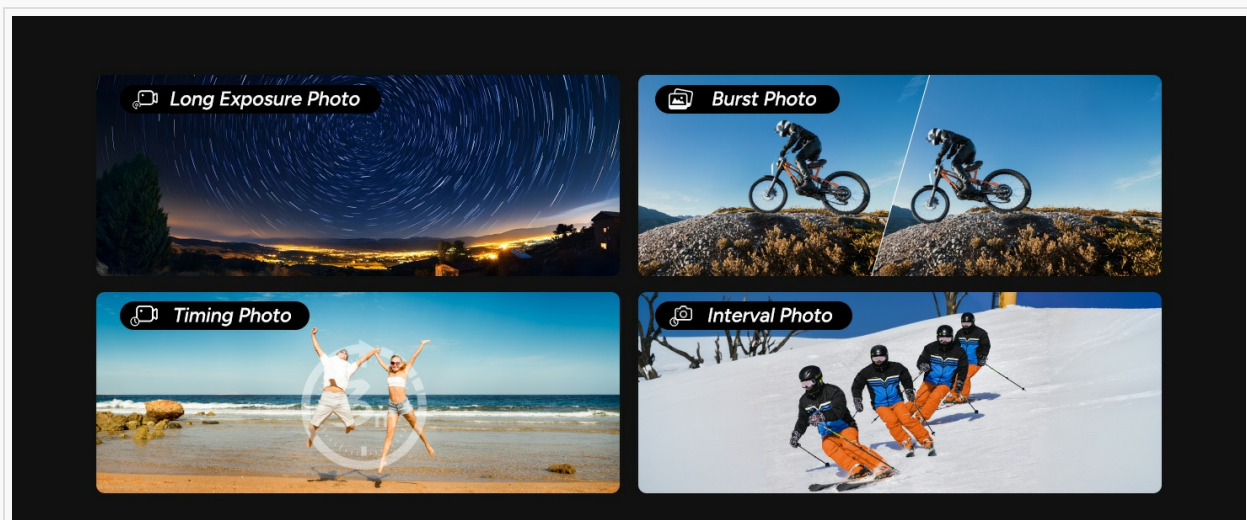


Image: Examples of various photo modes available on the SJCAM SJ20, such as Long Exposure, Burst, and Interval photos.

2.7. External Microphone Support

The SJ20 supports SJCAM's proprietary Type-C external microphone (sold separately) for enhanced audio pickup, ideal for vlogging or capturing clear sound in noisy environments.

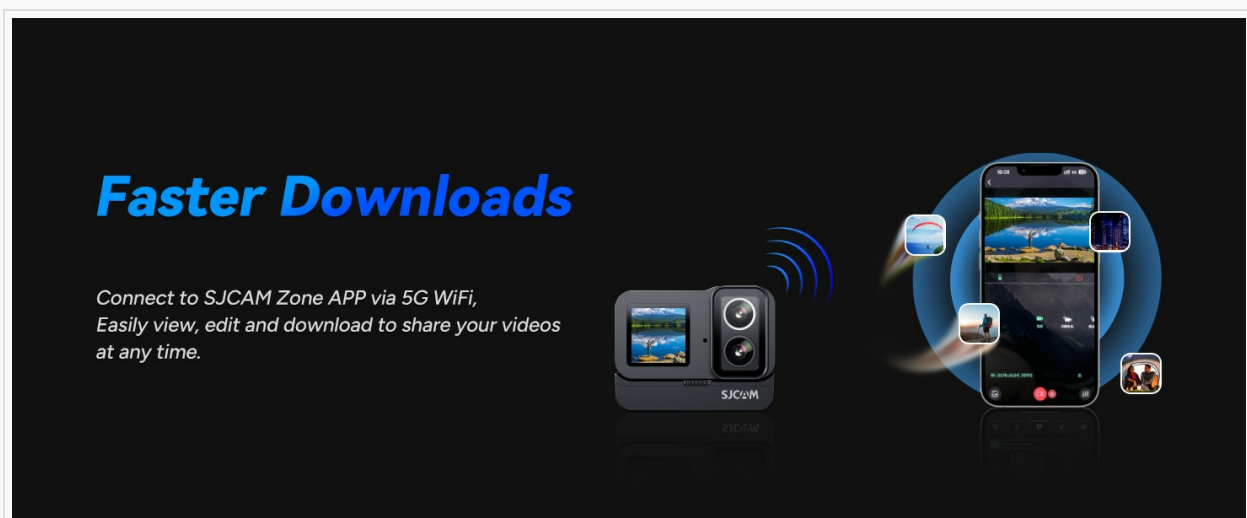


Image: Illustration showing the SJCAM SJ20 connected to an external Type-C microphone for improved audio recording.

2.8. Wrist Remote Control Support

For convenient operation, the SJ20 supports a wrist remote control (sold separately). This remote allows for easy control of Wi-Fi connection, turning the camera on/off, and taking photos/videos.

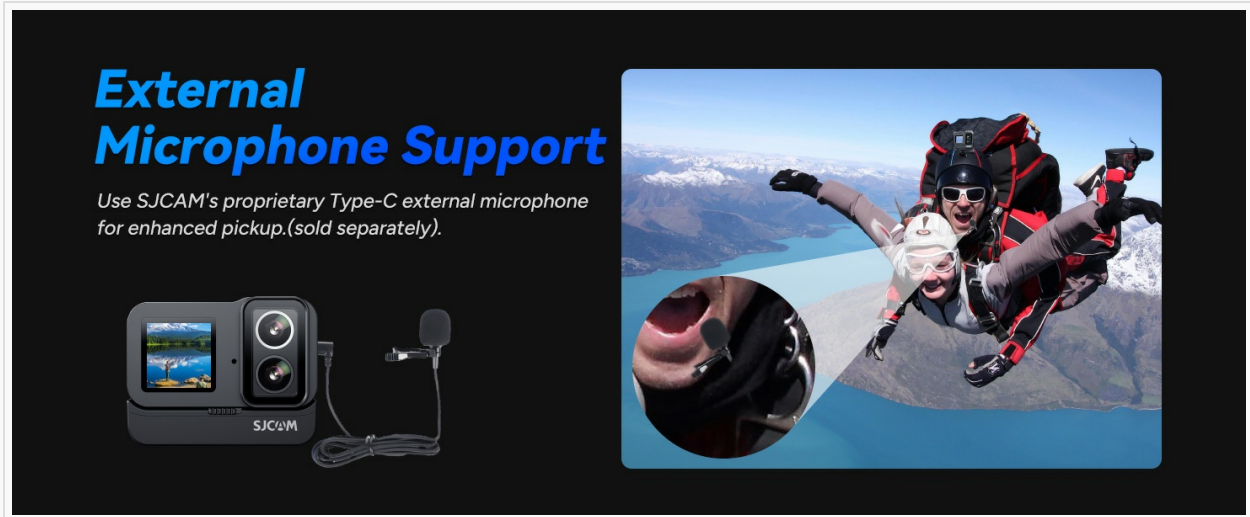


Image: Depiction of the SJCAM SJ20 being controlled remotely via a wrist-worn remote control.

3. MAINTENANCE

3.1. Cleaning the Camera and Lenses

Regular cleaning helps maintain optimal performance and image quality. Use a soft, lint-free cloth (like the one provided) to gently wipe the camera body. For lenses, use a specialized lens cleaning solution and a microfiber cloth to avoid scratches. Do not use abrasive materials or harsh chemicals.

3.2. Storage

When not in use, store the SJCAM SJ20 in a cool, dry place away from direct sunlight and extreme temperatures. Ensure the camera is powered off and the battery is not fully depleted or fully charged for long-term storage. Remove the battery if storing for extended periods.

3.3. Adapting to Extreme Environments

The SJCAM SJ20 is designed to operate in a wide range of temperatures, from -10°C to 45°C , making it suitable for various climates and seasons.



Image: The SJCAM SJ20 shown in a snowy environment, highlighting its ability to adapt to extreme temperatures.

4. TROUBLESHOOTING

4.1. Cannot Connect to SJCAM Zone App

If you encounter issues connecting your SJCAM SJ20 to the SJCAM Zone app, consider the following:

1. **Check Phone WiFi Settings:** Open your phone's WiFi settings to confirm that the camera's WiFi network is discoverable.
2. **Enable App Permissions:** Ensure the following permissions are enabled for the SJCAM Zone app on your smartphone: Network permission, Local Network permission, Location permission, and GPS.
3. **Rescan QR Code:** Remove the camera's WiFi network from your phone's WiFi settings (if previously connected) and then rescan the QR code on the camera's screen to re-establish the connection.

4.2. General Issues

- **Camera Not Responding:** If the camera freezes, press and hold the power button for 10 seconds to force a restart.
- **Poor Image/Video Quality:** Ensure lenses are clean. Check shooting mode settings (e.g., resolution, HDR). Ensure sufficient lighting for optimal results, especially when not using the dedicated night lens.
- **Battery Drains Quickly:** Ensure the battery is fully charged. Reduce screen brightness or turn off WiFi when not in use to conserve power.

5. SPECIFICATIONS

Feature	Detail
Brand	SJCAM
Model Number	SJ20-standard
Item Weight	1.54 pounds
Package Dimensions	16.93 x 12.6 x 2.17 inches
Country of Origin	China
Batteries	1 Lithium Ion batteries required. (included)
Special Features	Dual Lens, Electronic Image Stabilization, 4K Recording, Wide-Angle Lens, WiFi Connectivity
Photo Sensor Technology	CMOS
Video Capture Resolution	4K

Feature	Detail
Maximum Focal Length	20 Millimeters
Maximum Aperture	2 Millimeters
Flash Memory Type	Micro SD
Video Capture Format	MP4
Supported Audio Format	MP4, MOV
Screen Size	2 inches (main)
Connectivity Technology	Wi-Fi

6. WARRANTY AND SUPPORT

6.1. Protection Plans

Optional protection plans are available for your SJCAM SJ20 Action Camera. These plans offer extended coverage beyond the standard manufacturer's warranty. Please refer to your purchase documentation for details on available 2-Year and 3-Year Protection Plans.

6.2. Customer Support

For technical assistance, troubleshooting not covered in this manual, or warranty inquiries, please contact the SJCAM Official Store US, the seller of this product. Their contact information can typically be found on your purchase receipt or the product listing page.