

## Manuals+

[Q & A](#) | [Deep Search](#) | [Upload](#)

manuals.plus /

› [FitSpark](#) /

› [FitSpark DC-102 Pro+ Dual Channel HDR Dash Camera User Manual](#)

## FitSpark DC-102 Pro+

# FitSpark DC-102 Pro+ Dual Channel HDR Dash Camera User Manual

Model: DC-102 Pro+

## 1. INTRODUCTION

---

Thank you for choosing the FitSpark DC-102 Pro+ Dual Channel HDR Dash Camera. This manual provides essential information for setting up, operating, and maintaining your dash camera. Please read it thoroughly before use to ensure proper functionality and to maximize your device's potential.

## 2. PRODUCT OVERVIEW

---

### 2.1 Package Contents

Verify that all items are present in your package:

- 1N Front camera
- 1N Rear camera
- 1N Front camera 3M tape bracket
- 2N 3M tape spare parts
- 1N Car charger
- 5N Cable clips
- 1N User manual

### 2.2 Key Features

- **Real 2.7K HDR Front Camera:** Captures clear, high-dynamic-range video.
- **Full HD Rear Camera:** Provides comprehensive road coverage.
- **Novatek AI Chipset:** Ensures efficient processing and reliable performance.
- **5MP Sony Starvis IMX335 Sensor:** Delivers superior image quality, especially in low light.
- **Pro ADAS (Advanced Driver Assistance System):** Includes Lane Departure Warning, Forward Collision Warning, Pedestrian Detection, and Stop and Go alerts.
- **3.16" IPS TrueColors Display:** Offers a clear and wide viewing experience.

- **Nocturnal Night Vision:** Enhanced clarity in low-light conditions.
- **Built-in GPS & Wi-Fi:** For location tracking and easy footage access via app.
- **Supercapacitor:** Provides durability and heat resistance for reliable operation.
- **24-hour Parking Monitor:** Detects movement and records incidents when parked (requires optional hardwire kit).
- **G-Sensor Impact Detection:** Automatically locks footage during collisions.
- **Loop Recording:** Continuously records, overwriting oldest files when the memory card is full.

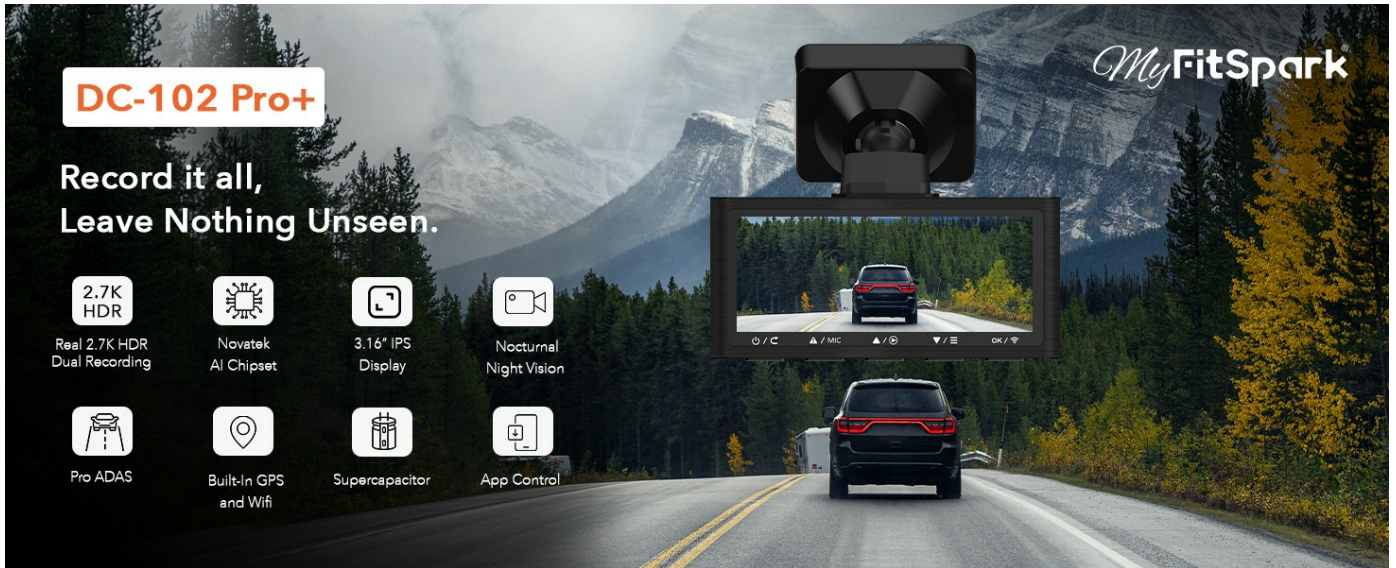


Image: Overview of the FitSpark DC-102 Pro+ Dash Camera highlighting its main features.

## 3. SETUP

### 3.1 Dash Camera Overview

#### Dashcamera Overview

- 1) 2 Channel USB Port
- 2) Reset
- 3) Micro SD Card Slot
- 4) Len
- 5) Speaker
- 6) LCD Screen
- 7) Screen on/off/wi-fi switch on/off
- 8) Page down/Menu list
- 9) Page Up/Playback
- 10) Emergency Recording/Mic on/of
- 11) Power Button/Return Button

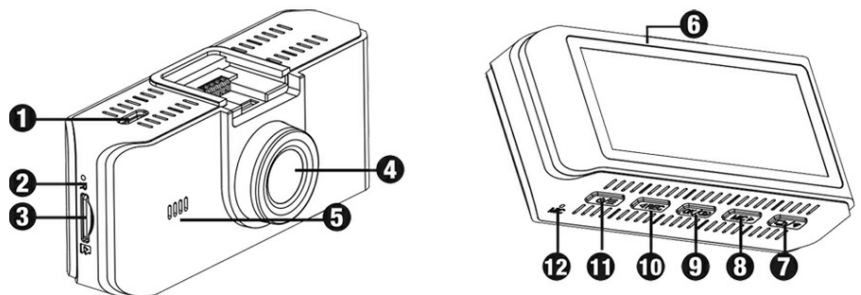


Image: Diagram illustrating the various ports and buttons on the FitSpark DC-102 Pro+ dash camera.

1. 2 Channel USB Port
2. Reset Button
3. Micro SD Card Slot
4. Lens
5. Speaker
6. LCD Screen
7. Screen on/off / Wi-Fi switch on/off

8. Page down / Menu list
9. Page Up / Playback
10. Emergency Recording / Mic on/off
11. Power Button / Return Button

## 3.2 Mounting the Camera

Mount the front camera on the windshield using the adhesive bracket. Ensure it is positioned correctly to provide a clear view of the road without obstructing your driving vision. Organize cables neatly using the provided clips for a secure and stable installation.

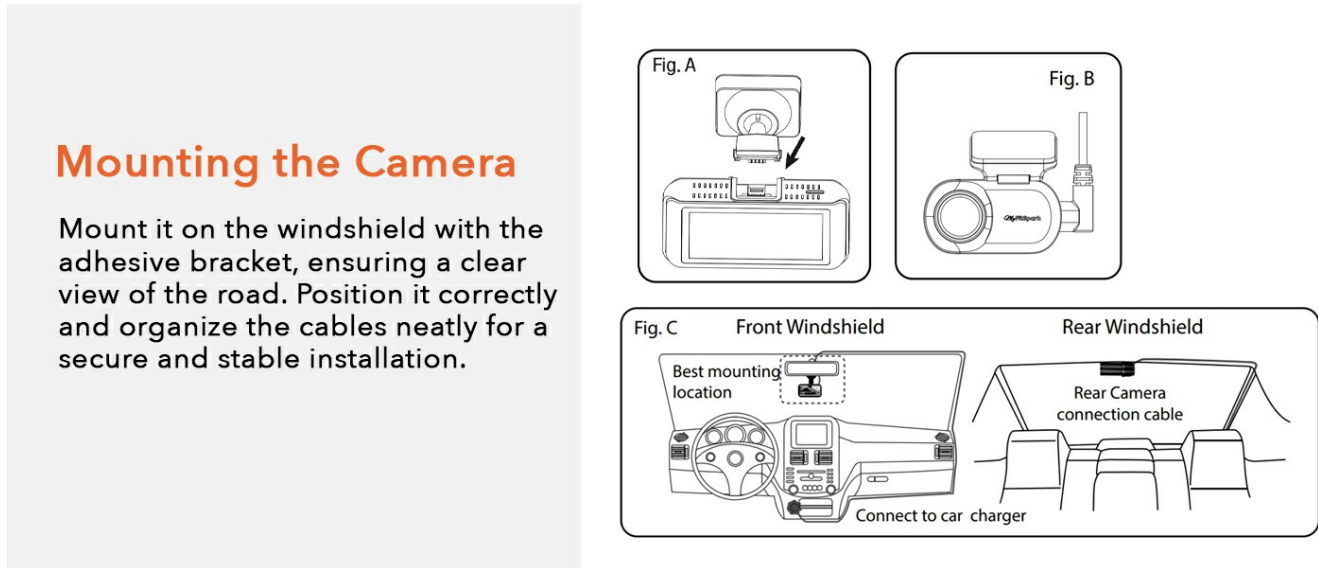


Image: Visual guide for mounting the front and rear dash cameras and routing cables.

## 3.3 Power Connection

Connect the car charger to the dash camera and plug it into your vehicle's 12V power outlet. The camera will automatically power on and begin recording when the vehicle starts.

## 3.4 Micro SD Card Installation

Insert a high-speed MicroSDXC U3 card (up to 256GB max, Lexar Silver Plus, Kingston, or Sandisk Extreme recommended) into the Micro SD Card Slot. Ensure the card is inserted correctly. Format the card within the camera's settings before first use.

# 4. OPERATING INSTRUCTIONS

---

## 4.1 Basic Recording

Once powered on, the camera automatically begins continuous loop recording. Video files are saved in 3-minute segments. When the memory card is full, the oldest files are overwritten.

## 4.2 G-Sensor Impact Detection

The built-in G-Sensor detects sudden impacts or collisions. In such events, the current video segment is automatically locked and protected from being overwritten, ensuring critical evidence is preserved.

## G-Sensor Impact Detection

The built-in G-Sensor detects sudden impacts or collisions and automatically locks the footage, ensuring crucial evidence is safely stored and not overwritten.



## G-Sensor event recording:

During video recording, if the dash camera detects an impact, it will automatically activate emergency recording mode.



Image: Explanation of G-Sensor functionality, showing how it locks footage and activates emergency recording during an impact.

## 4.3 Parking Monitor (Optional)

With an optional hardwire kit (sold separately), the dash camera can monitor your vehicle for 24 hours. It detects movement or impacts while parked and automatically records the incident. It features low voltage cut-off options to prevent battery drain.

### Parking Monitor kit (Sold Separately)

Keep your car safe even while parked. If someone bumps or tries to damage it, the camera automatically starts recording the incident.



Compatible with  
12V and 24V Vehicles



4 Low Voltage Cut-Off Options to Prevent  
Battery Drain



ACC Detection Automatically  
Switches to Parking mode



Permanent Dash Camera  
Power Supply

Image: Illustration of the 24-hour parking monitor feature, detailing its compatibility and battery protection.

## 4.4 Pro ADAS Features

The Advanced Driver Assistance System (ADAS) provides alerts to enhance driving safety:

- **Lane Departure Warning (LDW):** Notifies you if the vehicle drifts out of its lane.
- **Forward Collision Warning (FCW):** Alerts you if you are too close to the vehicle ahead.
- **Pedestrian Detection:** Provides warnings if pedestrians are detected in the vehicle's path.
- **Stop and Go:** Alerts you when traffic ahead starts moving.

## Pro ADAS (Advanced Driver Assistance System) The Smartest ADAS System

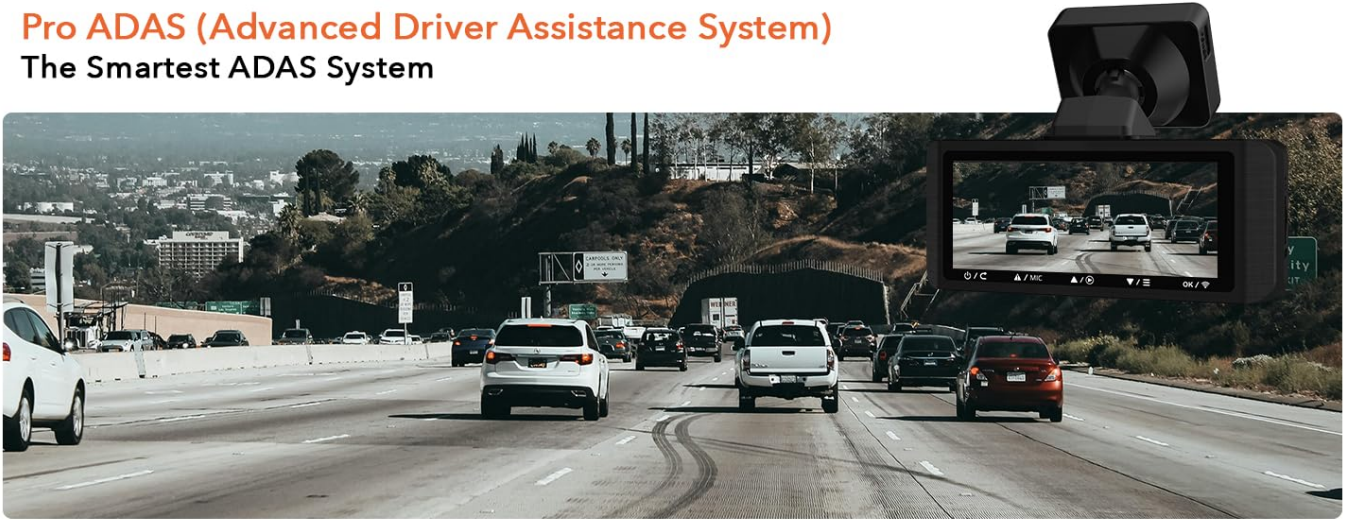


Image: Visual representation of the Pro ADAS system, showing its intelligent safety features.

### ADAS Calibration

For initial setup or if the camera position changes, ADAS calibration is required. Access the ADAS Calibration option in the menu list. Adjust the camera's horizontal and vertical alignment as guided on the screen to ensure accurate detection.

### ADAS Calibration & Settings

- 1). For the first time to install the camera, we need to operate ADAS Calibration. Once finish Calibration, there is no need for further calibration if your camera doesn't move place to install. Press enter menu list, enter ADAS Calibration to adjust the camera to below required position. Once finish calibration, press  $\Delta$   $\rightarrow$  back to previous interface.
- 2). Adjust the camera up and down so that the horizontal line coincides with the horizon, and then adjust the camera left and right so that the vertical line is aligned with the middle of the front. As shown in the picture:

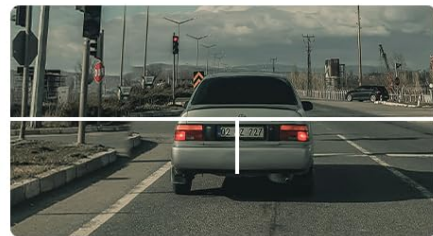


Image: Instructions and visual examples for performing ADAS calibration.

### 4.5 Wi-Fi and App Control

Connect your smartphone to the dash camera via Wi-Fi to access footage, adjust settings, and control the camera through the dedicated app. This allows for easy viewing, downloading, and sharing of recorded videos.



Image: A hand holding a smartphone displaying the dash camera app interface, with the dash camera visible in the background.

## 5. MAINTENANCE

---

### 5.1 SD Card Formatting

Regularly format your Micro SD card (at least once a month) through the camera's settings to ensure optimal performance and prevent data corruption. This will erase all data on the card, so back up any important files first.

### 5.2 Cleaning the Camera

Use a soft, dry cloth to clean the camera lens and screen. Avoid using abrasive cleaners or solvents that could damage the device.

## 6. TROUBLESHOOTING

---

Problem	Possible Cause	Solution
Camera does not power on.	No power supply; faulty car charger; loose connection.	Check car charger connection and vehicle's power outlet. Ensure the car charger is functional.
Recording stops unexpectedly.	SD card full; slow SD card; SD card error.	Format the SD card. Use a high-speed (U3) MicroSDXC card. Replace faulty SD card.
Video footage is blurry or unclear.	Protective film on lens; dirty lens; incorrect focus.	Remove protective film. Clean the lens with a soft cloth. Ensure proper mounting.
Wi-Fi connection issues.	Incorrect Wi-Fi password; app not updated; interference.	Verify Wi-Fi password. Update the app. Try connecting in a different location.
ADAS alerts are inaccurate.	Improper camera alignment; calibration needed.	Perform ADAS calibration as described in section 4.4. Ensure camera is securely mounted.

## 7. SPECIFICATIONS

---

Feature	Detail
Model	DC-102 Pro+
Front Camera Resolution	2.7K HDR
Rear Camera Resolution	1080p (Full HD)
Sensor	5MP Sony Starvis IMX335
Display Size	3.16 Inches IPS LCD
Front Viewing Angle	130 Degrees

Feature	Detail
Rear Viewing Angle	120 Degrees
Storage	MicroSDXC, U3 high speed card up to 256GB max (Lexar Silver Plus, Kingston, Sandisk Extreme recommended)
Connectivity	Wi-Fi, GPS
Mounting Type	Windshield Mount
Power Source	Car Charger (12V/24V compatible)
Special Features	Novatek AI Chipset, Pro ADAS, Nocturnal Night Vision, Supercapacitor, G-Sensor, Loop Recording, Parking Monitor (with optional kit)
Product Dimensions	3.5 x 9.7 x 4 cm
Item Weight	60 g

## 8. WARRANTY AND SUPPORT

---

### 8.1 Warranty Information

Your FitSpark DC-102 Pro+ Dash Camera comes with a standard manufacturer's warranty. Please refer to the warranty card included in your package for specific terms and conditions. Keep your purchase receipt as proof of purchase for warranty claims.

### 8.2 Customer Support

For technical assistance, troubleshooting, or any product-related inquiries, please contact FitSpark customer support:

- **Email:** [support@myfitspark.com](mailto:support@myfitspark.com)
- **Manufacturer:** FitSpark India Pvt Ltd.

