

Manuals.plus /

› taopodo /

› taopodo M13-BK Bluetooth Speaker with Light - Instruction Manual

taopodo M13-BK

taopodo Bluetooth Speaker with Light

Model: M13-BK

1. INTRODUCTION

Thank you for choosing the taopodo M13-BK Bluetooth Speaker. This portable speaker combines powerful audio with dynamic RGB lighting, designed for an enhanced listening experience. Featuring Bluetooth 5.4 connectivity, IPX7 waterproofing, and a long-lasting battery, it is suitable for various environments, from indoor gatherings to outdoor adventures.

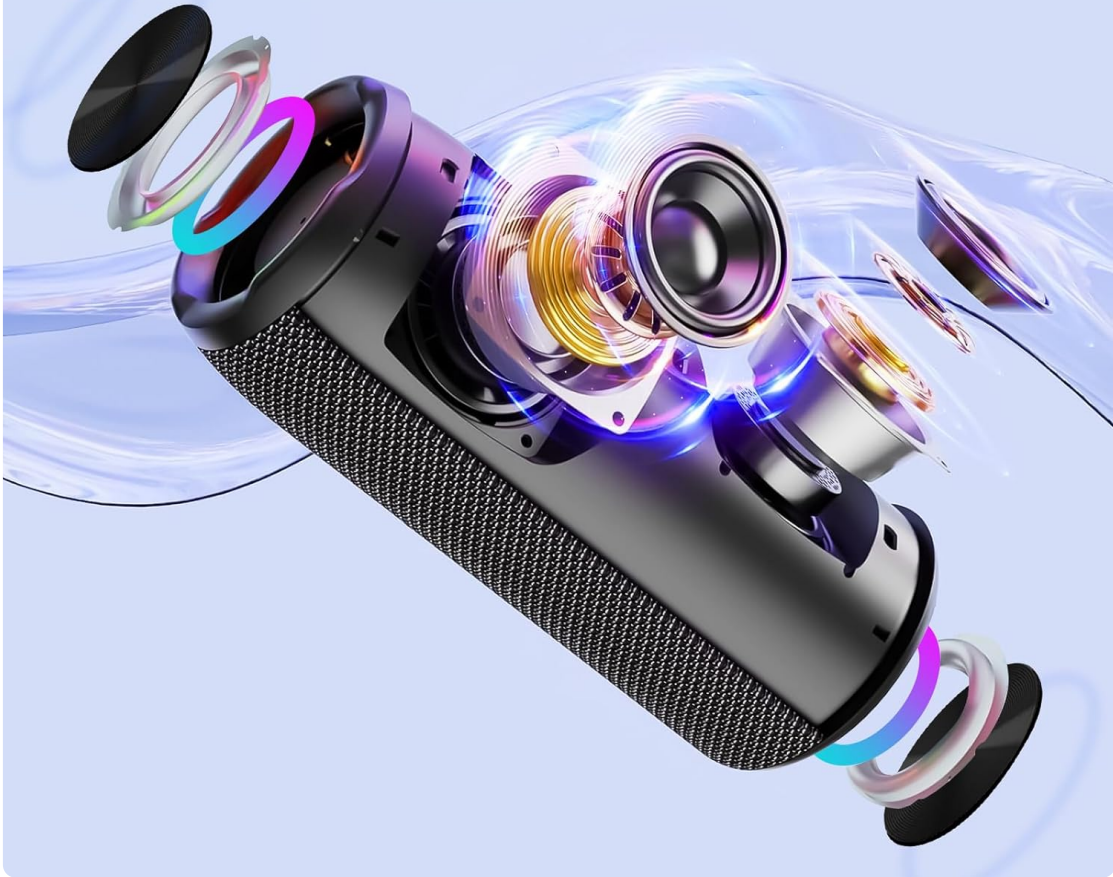


The taopodo M13-BK Bluetooth Speaker, showcasing its sleek design and control buttons.

2. PRODUCT FEATURES

- **30W Dual Dynamic Audio:** Experience rich and powerful sound with dual bass drivers.

30W Dual Dynamic Audio



Internal view illustrating the 30W dual dynamic audio components.

- **Dynamic RGB Lights:** Features 3 dynamic RGB light modes with 5 change patterns and 30 light variations to enhance your listening atmosphere.

3 dynamic RGB lights

5 change modes * 30 light changes



Multiple speakers showcasing the vibrant RGB lighting effects.

- **Bluetooth 5.4:** Provides stable and efficient wireless connectivity with compatible devices.
- **IPX7 Waterproof:** Designed to withstand immersion in water up to 1 meter for 30 minutes, making it ideal for outdoor use.

Waterproof



The speaker's IPX7 waterproof capability, shown in a water environment.

- **Up to 30 Hours Operating Time:** Enjoy extended music playback on a single charge (up to 24 hours at 50% volume with lights off).



30 HOURS LONG OPERATING TIME

Get 30 hours of music without Interruption

Note: Up to 24 hours of playback at 50 per cent volume with lights off



Illustration of the speaker's long battery life, suitable for extended use.

- **Built-in Microphone:** Allows for hands-free calling.
- **TWS (True Wireless Stereo) Pairing:** Connect two M13-BK speakers for an immersive stereo sound experience.
- **Multiple Playback Modes:** Supports Bluetooth, AUX input, and TF Card playback.

3. PACKAGE CONTENTS

Please check the box for the following items:

- taopodo Bluetooth Speaker (M13-BK)
- USB Charging Cable
- Quick Start Guide



The speaker and its packaging, including the quick start guide.

4. SETUP

4.1 Charging the Speaker

Before first use, fully charge the speaker. Connect the provided USB charging cable to the DC5V port on the speaker and the other end to a USB power adapter (not included) or a computer USB port. The charging indicator light will show the charging status and turn off when fully charged.

4.2 Powering On/Off

- **Power On:** Press and hold the **Power button** (



) for 2-3 seconds until you hear an audible prompt and the lights illuminate.

- **Power Off:** Press and hold the **Power button** for 2-3 seconds until you hear an audible prompt and the lights turn off.

4.3 Bluetooth Pairing

1. Ensure the speaker is powered on and in Bluetooth pairing mode (indicated by a flashing light or audible prompt).
2. On your mobile device, navigate to the Bluetooth settings.
3. Search for available devices and select "M13" or "taopodo M13-BK" from the list.
4. Once connected, you will hear a confirmation sound. The speaker is now ready for audio playback.

4.4 TWS (True Wireless Stereo) Pairing

To pair two M13-BK speakers for stereo sound:

1. Ensure both speakers are powered on and not connected to any Bluetooth device.
2. On one speaker (this will be the primary speaker), press and hold the **TWS button** (often indicated by an infinity symbol or two interlocking circles) for a few seconds.
3. The speakers will automatically search and pair with each other. You will hear a confirmation sound once connected.
4. Connect your device to the primary speaker via Bluetooth as described in section 4.3. Audio will

now play through both speakers in stereo.

5. OPERATING INSTRUCTIONS

5.1 Button Functions

The control panel on the speaker features several buttons:

- **Power Button (**



); Press and hold to power on/off. Short press to play/pause music or answer/end calls.

- **Volume Down / Previous Track (**



): Short press to decrease volume. Long press to go to the previous track.

- **Volume Up / Next Track (**



): Short press to increase volume. Long press to go to the next track.

- **Mode Button (M):** Short press to switch between Bluetooth, AUX, and TF Card modes.
- **EQ Button (EQ):** Short press to cycle through different equalizer sound modes.
- **Light Button (**



): Short press to change RGB light patterns. Long press to turn lights on/off.

5.2 Audio Playback

- **Bluetooth Mode:** After successful pairing, open your music app and start playback.
- **AUX Mode:** Insert a 3.5mm audio cable into the AUX port on the speaker and connect the other end to your audio source. The speaker will automatically switch to AUX mode.
- **TF Card Mode:** Insert a TF (MicroSD) card with pre-loaded music files into the TF card slot. The speaker will automatically detect and play music from the card.

5.3 Hands-Free Calling

When connected via Bluetooth, you can use the speaker for hands-free calls:

- **Answer Call:** Short press the **Power button**.
- **End Call:** Short press the **Power button** during a call.
- **Reject Call:** Long press the **Power button** when an incoming call rings.

6. MAINTENANCE

6.1 Cleaning

Wipe the speaker with a soft, damp cloth. Do not use harsh chemicals, cleaning solvents, or strong detergents. Ensure all ports are dry before charging or connecting cables.

6.2 Storage

Store the speaker in a cool, dry place away from direct sunlight and extreme temperatures. If storing for an extended period, charge the battery every 3-6 months to maintain battery health.

6.3 Water Resistance

The speaker is IPX7 waterproof. This means it can be immersed in water up to 1 meter for 30 minutes. However, it is not designed for continuous underwater use. Ensure the charging port cover is securely closed before exposing the speaker to water.

7. TROUBLESHOOTING

- **Speaker does not power on:** Ensure the battery is charged. Connect the speaker to a power source and try again.
- **No sound:** Check the volume level on both the speaker and your connected device. Ensure the speaker is in the correct mode (Bluetooth, AUX, TF Card).
- **Bluetooth pairing fails:** Ensure the speaker is in pairing mode and within range (up to 20 meters). Turn off Bluetooth on your device and speaker, then turn them back on and try pairing again. Disconnect from other Bluetooth devices if necessary.
- **Sound distortion:** Reduce the volume on your device or the speaker. Ensure the audio source is not distorted.
- **TWS pairing fails:** Ensure both speakers are M13-BK models and are not connected to any other Bluetooth device before attempting TWS pairing.

8. SPECIFICATIONS

Parameter	Value
Model Name	M13
Item Model Number	M13-BK
Brand	taopodo
Colour	Black
Product Dimensions	8.5D x 8.5W x 20.8H cm
Item Weight	750 g
Speaker Maximum Output Power	40 Watts
Input Voltage	5 Volts
Impedance	4 Ohm
Frequency Response	16000 Hz
Connectivity Technology	Bluetooth
Bluetooth Version	5.4
Maximum Wireless Range	20 Millimeters (likely 20 meters, common typo)
Surround Sound Channel Configuration	2.0
Batteries	2 AAA batteries required (Note: This may refer to a remote, as the speaker itself has a rechargeable battery for 30 hours playtime)
Special Features	Bass amplification, lightweight, stereo pairing, shockproof, portable, waterproof, USB port
Compatible Devices	Desktop, TV, karaoke machine, laptop, projector, smartphone, tablet

9. WARRANTY AND SUPPORT

The taopodo M13-BK Bluetooth Speaker comes with a **2-year active warranty**. Please register your product within 14 days of purchase to activate the warranty.

For product support, warranty claims, or any inquiries, please contact taopodo customer service:

- **Email:** taopodo@gmail.com
- **WhatsApp:** +86 13242960237
- **Facebook:** [facebook.com/Taopodo](https://www.facebook.com/Taopodo)

Please retain your proof of purchase for warranty service.

