



Manuals.plus /

› JLab /

› JLab Go Lux ANC Wireless Headphones User Manual

## JLab HBGOLUXANCGPH20WEB

# JLab Go Lux ANC Wireless Headphones User Manual

Model: HBGOLUXANCGPH20WEB

## INTRODUCTION

---

Thank you for choosing the JLab Go Lux ANC Wireless Headphones. This manual provides detailed instructions to help you set up, operate, and maintain your headphones, ensuring you get the best possible audio experience with hybrid active noise cancellation, Cloud Foam comfort, and customizable sound.

## SAFETY INFORMATION

---

- Do not expose the headphones to extreme temperatures, humidity, or corrosive substances.
- Avoid dropping or subjecting the headphones to strong impacts.
- Do not disassemble or modify the headphones. This will void the warranty.
- Clean the headphones with a soft, dry cloth. Do not use harsh chemicals.
- Listen at moderate volume levels to prevent hearing damage.

## PACKAGE CONTENTS

---

Please check the box for the following items:

- JLab Go Lux ANC Wireless Headphones (Graphite)
- Type-C Charging Cable (for charging and wired connection)
- JLab 2 Year Warranty Information



## CLOUD FOAM COMFORT

Form-Fit™ Earcups are ergonomically shaped to the natural outline of the ear.

Image: The JLab Go Lux ANC Graphite headphones, folded, alongside the blue Type-C charging cable. Labels indicate Cloud Foam Headband, Cloud Foam Earcups, Foldable with Rotating Earcups, Universal Mic with Volume/Track Control/Power ON/OFF/ANC Options/Share Mode, and Type-C Charging Cable.

### PRODUCT OVERVIEW

---

Familiarize yourself with the key components of your JLab Go Lux ANC headphones.



Image: A front-angle view of the JLab Go Lux ANC Wireless Headphones in Graphite color, showcasing the on-ear design and JLab logo on the earcups.



**IMMERSIVE  
LAB QUALITY  
SOUND**

---

Enjoy exceptional sound quality via  
40mm drivers, bringing deep bass and  
clarity to your music.

Image: A close-up of the JLab Go Lux ANC headphone earcup, highlighting the "Immersive Lab Quality Sound" feature. Text below states:  
"Enjoy exceptional sound quality via 40mm drivers, bringing deep bass and clarity to your music."

# BUILT-IN LAB SPATIAL AUDIO



Featuring spatial audio EQ straight from the Lab, enjoy another dimension and immersive sound.

Image: The JLab Go Lux ANC headphones shown with text "Built-in Lab Spatial Audio". Text below states: "Featuring spatial audio EQ straight from the Lab, enjoy another dimension and immersive sound."

## SETUP

---

### Charging

Before first use, fully charge your headphones. Connect the included Type-C charging cable to the charging port on the headphones and the other end to a USB power source. The LED indicator will show charging status.

- A full charge provides over 70 hours of playtime (40+ hours with ANC on).

### Bluetooth Pairing

1. Turn on the headphones by pressing and holding the power button until the LED indicator flashes.
2. The headphones will automatically enter pairing mode (LED will flash blue/red).
3. On your device (smartphone, laptop), open Bluetooth settings and select "JLab Go Lux ANC" from the list of available devices.

4. Once connected, the LED indicator will turn solid blue.

**Google Fast Pair & Microsoft Swift Pair:** For supported Android and Windows 10/11 devices, simply turn on your headphones near the device, and a pop-up will appear prompting you to connect with a single click.

## Multipoint Connection

Your JLab Go Lux ANC headphones can connect to two devices simultaneously, allowing you to seamlessly switch between them.

1. Connect to the first device following the standard Bluetooth pairing steps.
2. Once connected, turn off Bluetooth on the first device.
3. The headphones will re-enter pairing mode. Connect to the second device.
4. Turn Bluetooth back on for the first device. The headphones should automatically reconnect to both devices.

To switch audio, simply pause playback on one device and start playback on the other.

## OPERATING INSTRUCTIONS

---

### Basic Controls

Action	Control
Power On/Off	Press and hold power button
Play/Pause	Single tap on multi-function button
Volume Up	Press '+' button
Volume Down	Press '-' button
Next Track	Press and hold '+' button
Previous Track	Press and hold '-' button

### Hybrid ANC and Be Aware Mode

Your headphones feature Hybrid Active Noise Cancellation to reduce external distractions and Be Aware Mode to stay connected to your surroundings.

- **Activate ANC:** Press the ANC button (or designated control) to turn on Active Noise Cancellation.
- **Activate Be Aware Mode:** Press the ANC button again to switch to Be Aware Mode.
- **Turn Off:** Press the ANC button a third time to turn off both modes.

# HYBRID ANC & BE AWARE MODE

Keep noise out with ANC, or let sound in with Be Aware with just a tap.

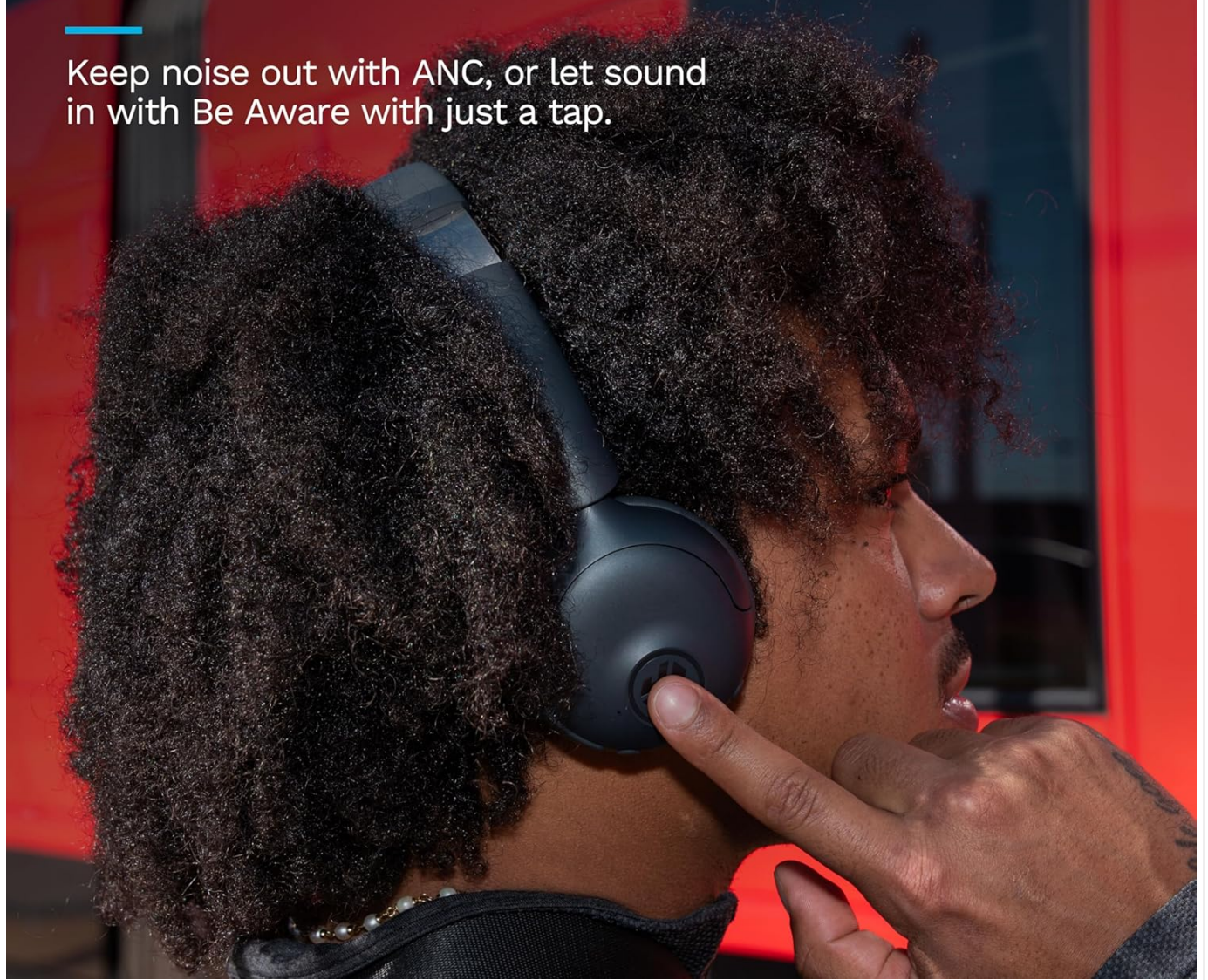


Image: A person wearing the JLab Go Lux ANC headphones, with their finger touching the earcup, illustrating the ease of switching between Hybrid ANC and Be Aware Mode. Text overlay reads: "Keep noise out with ANC, or let sound in with Be Aware with just a tap."

## Crystal Clear Calls

The built-in noise-canceling microphones ensure clear communication during calls.

Action	Control
Answer/End Call	Single tap on multi-function button
Reject Call	Press and hold multi-function button

## JLab App Customization

Download the JLab App from the App Store or Google Play Store to customize your listening experience.

- Adjust ANC/Be Aware settings.
- Customize touch controls.

- Fine-tune sound with custom equalizer settings or use presets (JLab Signature, Balance, Bass Boost).
- Enable Safe Hearing option for volume limits.
- Receive software updates.

## CUSTOMIZE YOUR SOUND + EXPERIENCE VIA JLAB APP

With the new JLab App, customize the ANC/Be Aware settings, touch controls, and sound to your personal preference.

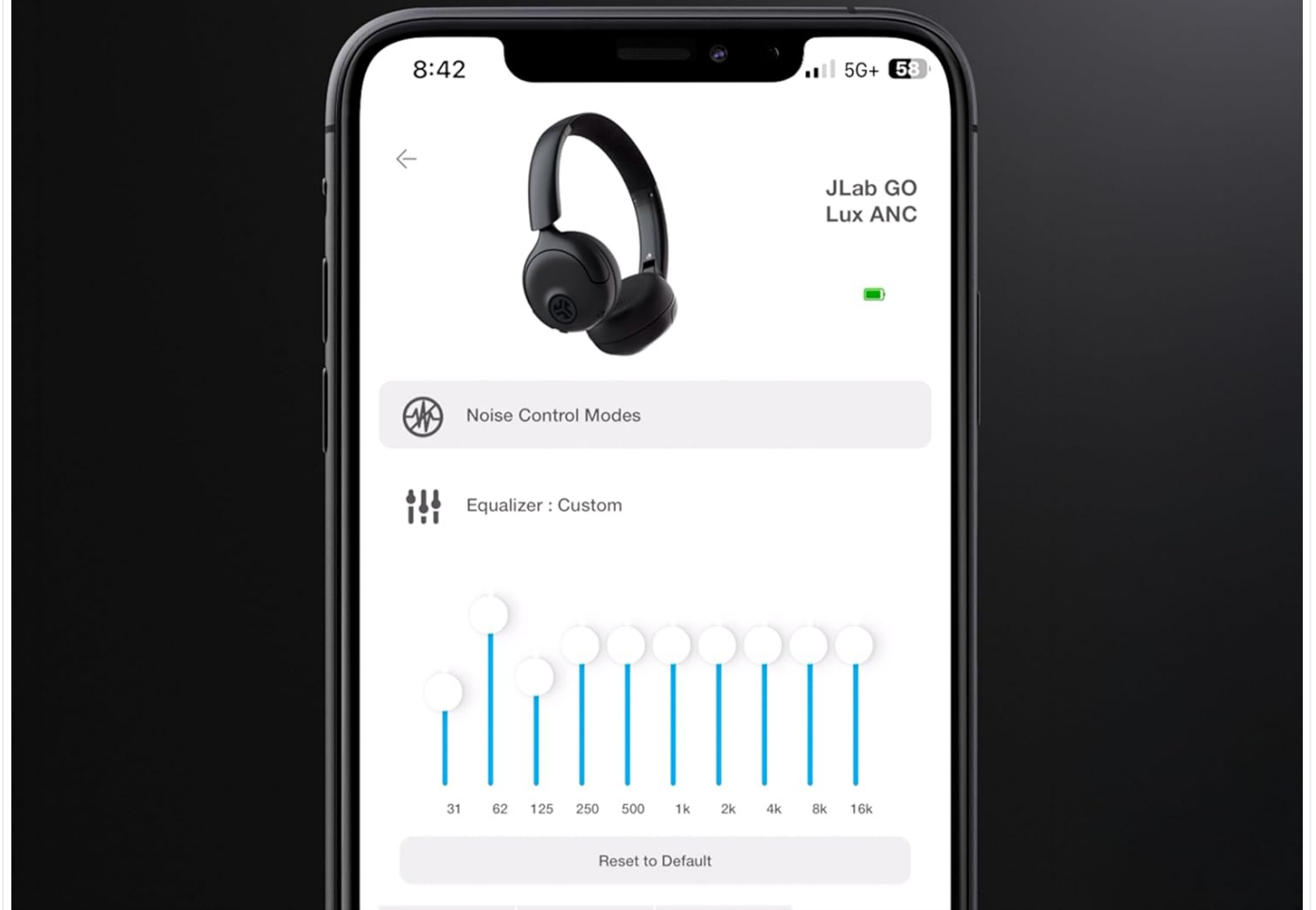


Image: A smartphone displaying the JLab App interface, showing equalizer settings and noise control modes for the JLab Go Lux ANC headphones. This illustrates the customization options available through the app.

### Google Find My Device

If you misplace your headphones, you can use Google Find My Device to locate them, provided they are connected to your Android device and within range.

### Wireless Share Mode

Share audio wirelessly between two JLab Lux headphones. Refer to the JLab App or JLab website for detailed instructions on activating and using this feature.

## MAINTENANCE

- 
- **Cleaning:** Use a soft, slightly damp cloth to wipe down the earcups and headband. Do not use abrasive cleaners or immerse the headphones in water.
  - **Storage:** When not in use, store the headphones in a cool, dry place, away from direct sunlight and extreme temperatures. The headphones are foldable for compact storage.



Image: The JLab Go Lux ANC headphones folded compactly next to their charging cable, demonstrating their portability and ease of storage.

## TROUBLESHOOTING

---

Problem	Solution
Headphones not turning on	Ensure headphones are charged. Connect to a power source and try again.
Cannot pair via Bluetooth	Ensure headphones are in pairing mode (flashing blue/red). Turn off and on Bluetooth on your device. Forget "JLab Go Lux ANC" from your device's Bluetooth list and re-pair. Move closer to your device.
No sound or low volume	Increase volume on both headphones and connected device. Ensure headphones are properly connected to the device. Try playing different audio sources.
ANC not working effectively	Ensure ANC mode is activated. Check for proper fit of the earcups to your ears. Update firmware via the JLab App.
Call quality issues	Ensure microphone is not obstructed. Move to an area with less background noise. Check network connection on your phone.

## SPECIFICATIONS

Feature	Detail
Model Name	HBGOLUXANCGPH20WEB
Connectivity Technology	Wireless (Bluetooth 5.4)
Earpiece Shape	On-Ear
Noise Control	Hybrid Noise Cancellation
Audio Driver Type	Dynamic Driver
Frequency Range	20Hz - 20kHz
Control Method	Touch
Compatible Devices	Smartphones (Android & iOS), Laptops (Windows & Mac), JLab Headphones
Item Weight	10.6 ounces
Product Dimensions	2.95 x 6.1 x 7.48 inches
Batteries	1 Nonstandard Battery (included)
Color	Graphite
UPC	810119073686

## WARRANTY AND SUPPORT

Your JLab Go Lux ANC Wireless Headphones come with a **JLab 2 Year Warranty**.

For warranty claims, technical support, or additional information, please visit the official JLab support website or contact their customer service. You can find more details on the JLab Store on Amazon: [JLab Store](#).

