

Manuals+

[Q & A](#) | [Deep Search](#) | [Upload](#)

[manuals.plus](#) /

- › [Bsemax](#) /
- › [Bsemax Automatic Wet Food Cat Feeder Model 002 Instruction Manual](#)

Bsemax 002 wet feeder

Bsemax Automatic Wet Food Cat Feeder Instruction Manual

Model: 002 Wet Feeder

Brand: Bsemax

INTRODUCTION

The Bsemax Automatic Wet Food Cat Feeder, Model 002, is designed to provide scheduled meals for your pets, ensuring fresh food delivery even when you are away. This feeder features multiple compartments, integrated ice packs for food preservation, and a user-friendly interface for programming feeding times. It is suitable for cats, puppies, and other small pets.



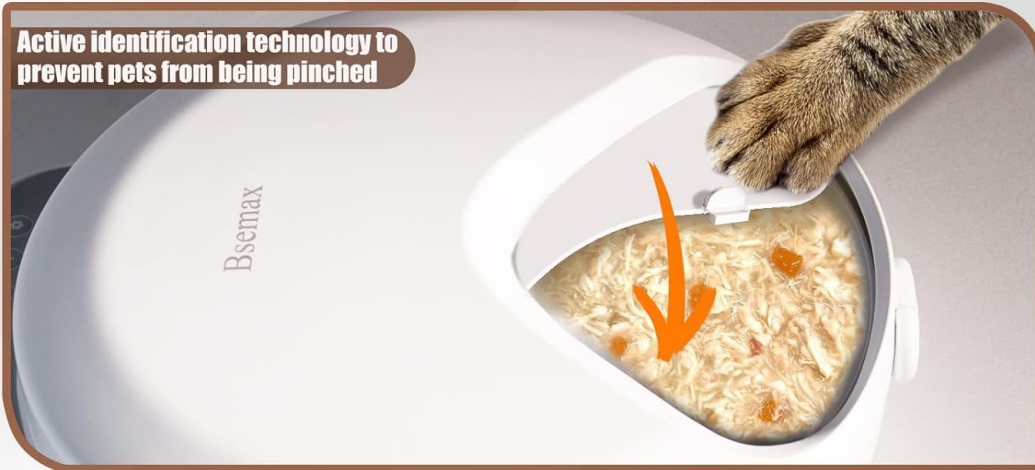
Image: Bsemex Automatic Wet Food Cat Feeder, Model 002, in white with ice packs visible.

SAFETY INFORMATION

- This feeder operates on 4 AA alkaline batteries (not included). Ensure correct battery polarity during installation.
- Do not immerse the main unit in water. The main unit is not washable; wipe with a damp rag.
- The food tray and lid are removable and dishwasher safe.
- The feeder includes an anti-kick safety design that stops operation if a pet's paw is detected, resuming once the paw is retracted.
- Place ice crystal boxes in the freezer for at least 6 hours before use to ensure optimal freshness.

USER&PET-FRIENDLY DESIGN

Active identification technology to prevent pets from being pinched



Prevent accidentally touch



Image: Close-up of the feeder highlighting the anti-pinch mechanism and anti-accidental touch control panel.

PACKAGE CONTENTS

Verify that all items are present in the package:

- 1 x Bsemax Automatic Wet Food Cat Feeder (Main Unit)
- 1 x Lid
- 1 x Food Plate (4 compartments)
- 2 x Ice Crystal Boxes
- 1 x Instruction Manual

Video: Product Unboxing Video. This video demonstrates the contents of the package and initial handling of the feeder components.

PRODUCT OVERVIEW

The Bsemmax Automatic Wet Food Cat Feeder consists of a main unit housing the control panel, a removable food plate with four compartments, a lid, and two ice crystal boxes for cooling.



Image: Exploded view of the feeder showing its main components: the lid, the food plate, and the base unit.

SETUP

1. Battery Installation

The feeder requires 4 AA alkaline batteries for operation. The battery compartment is located on the underside of the main unit. Open the compartment, insert the batteries according to the polarity markings, and close the cover securely.

2. Ice Pack Preparation and Placement

For optimal food freshness, place the two ice crystal boxes in a freezer for at least 6 hours before use. Once frozen, place them into the designated slots in the base of the feeder.

Schematic diagram of ice crystal box placement

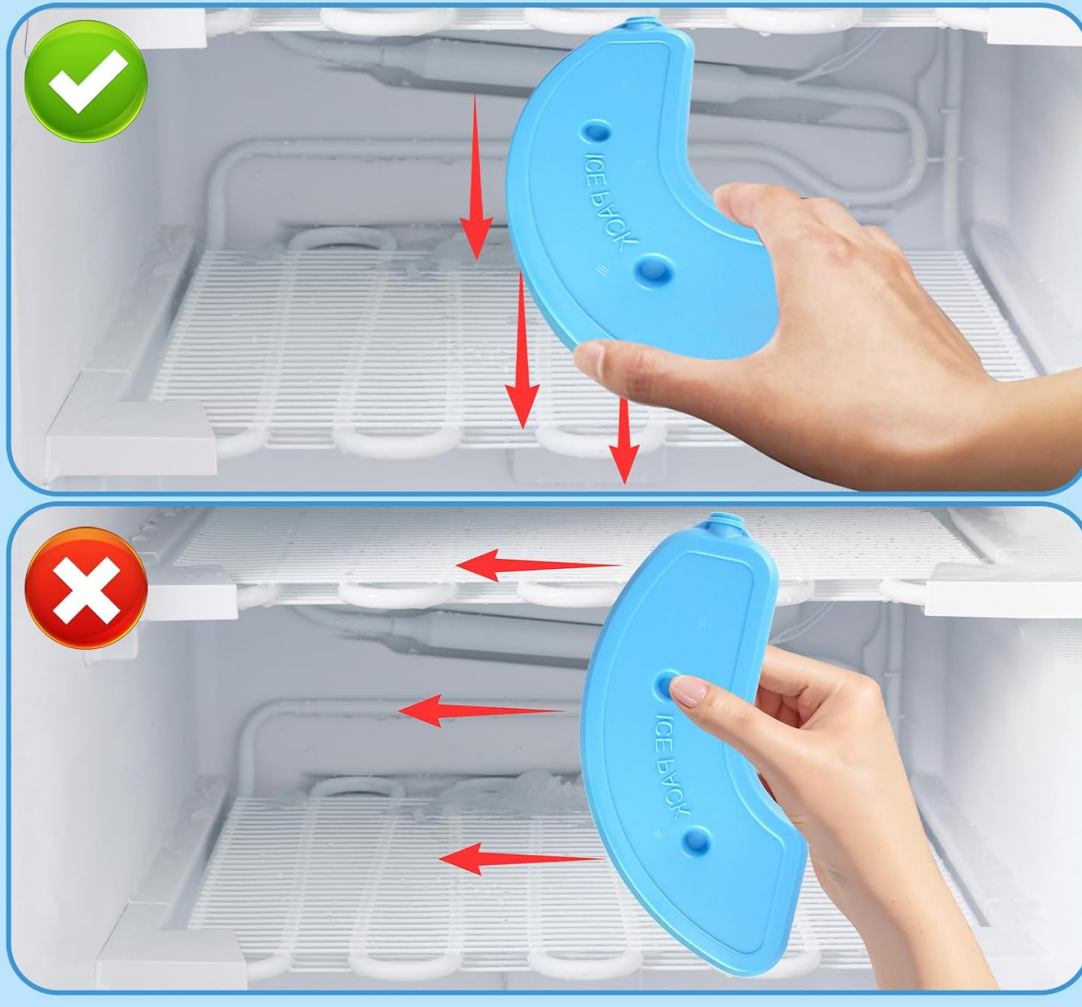


Image: Diagram illustrating the correct way to place ice packs in the freezer for freezing.

3. Food Tray and Food Placement

Place the food plate onto the main unit, ensuring it sits correctly. Fill each of the four compartments with your pet's wet or dry food. Each compartment has a capacity of 240mL, suitable for 100-120g of pet food.

Video: Demonstration of how to properly place food into the feeder compartments.

SCIENTIFIC FEEDING, BALANCED NUTRITION

240ml/tray is suitable for big cats and kittens.



Image: The feeder's compartments filled with different types of pet food, including fresh, canned, freeze-dried, dry food, and snacks.

4. Close the Lid

Securely close the lid over the food plate. The feeder is designed to be cordless, allowing flexible placement anywhere in your home.



Image: The feeder positioned in different rooms of a house, illustrating its portability and cordless operation.

OPERATING INSTRUCTIONS

1. Setting Time Format (12-hour/24-hour)

To switch between 12-hour and 24-hour time formats, press and hold the "+" and "-" buttons simultaneously for three seconds.

2. Adjusting the Clock

Press the setting button to enter time adjustment mode. Use the "+" or "-" buttons to adjust the hour and minute. Press the setting button again to confirm and move to the next setting.

3. Configuring the Feeding Schedule

The feeder allows setting up to 4 feeding times per day. After setting the current time, press the setting button to program each meal time. Use "+" or "-" to adjust the desired feeding hour and minute for each meal. To cancel a meal, set its time to 00:00.

4. Manual Feeding

To dispense a meal manually, press and hold the "+" button once. Ensure the panel is unlocked

before performing manual feeding.

5. Adjusting Feeding Reminder Tone

The feeder has an adjustable feeding reminder tone. Refer to the video for detailed instructions on how to turn the sound on or off.

6. Factory Reset

To restore the feeder to its factory settings, press and hold the setting button and the "-" button simultaneously. Ensure the panel is unlocked.

Video: Instructions on manual feeding, factory reset, and adjusting the feeding reminder tone.

MAINTENANCE AND CLEANING

Regular cleaning ensures hygiene and extends the life of your feeder.

- The lid and food tray are removable and dishwasher safe for easy cleaning.
- The main unit is not washable. To clean, simply wipe it with a damp cloth.

TROUBLESHOOTING

If the feeder is not operating as expected, consider the following:

- **Power:** Ensure fresh AA batteries are installed correctly. The LED display shows remaining power.
- **Rotation:** Check for any obstructions in the food tray or rotation mechanism. The anti-kick safety feature will temporarily stop rotation if a paw is detected.
- **Settings:** Verify that the time and feeding schedule are set correctly. If issues persist, perform a factory reset as described in the Operating Instructions.

Video: Demonstration of the anti-pinch safety feature in action.

SPECIFICATIONS

Brand	Bsemax
Model Number	002 wet feeder
Product Dimensions	10.47"L x 3.07"W x 11.77"H
Item Weight	3.01 pounds
Capacity	960 Milliliters (240mL per compartment)
Power Source	4 AA Alkaline Batteries (not included)

Special Feature	Timer, Refrigerated (with ice packs)
UPC	751753652458

WARRANTY AND SUPPORT

This product comes with a 90-day warranty. For support or warranty claims, please contact Bsemax customer service.

© 2025 Bsemax. All rights reserved.