

## LIWAN TZ-SH330

# LIWAN 4G LTE Cellular Security Camera (Model TZ-SH330) Instruction Manual

Your guide to setting up and operating your LIWAN 4G LTE Cellular Security Camera.

## 1. INTRODUCTION

The LIWAN 4G LTE Cellular Security Camera provides robust outdoor surveillance without the need for a Wi-Fi connection. Designed for off-grid areas, this wired camera offers 24/7 continuous recording, 2K color night vision, two-way audio, and 360-degree viewing capabilities. It comes equipped with a built-in 4G SIM card and a 32GB memory card for local storage.



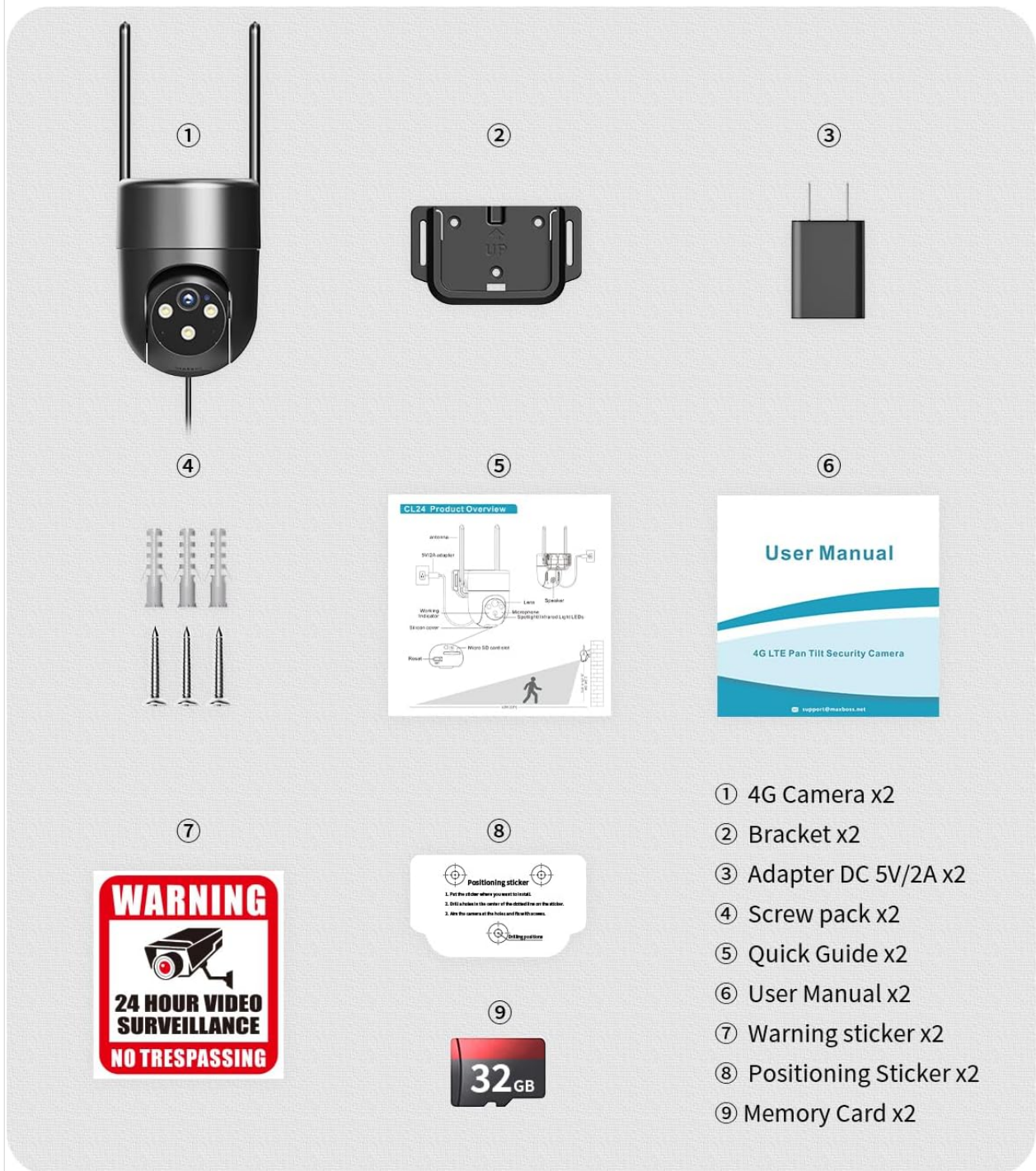
*Image: The LIWAN 4G LTE Cellular Security Camera, showing two units, a power adapter, and a smartphone displaying the camera's live feed.*

## 2. PACKAGE CONTENTS

Please verify that all items listed below are included in your package:

- Cellular Security Camera (x2 for 2-pack)
- 4G SIM Card (pre-installed) and 32G Memory Card (pre-installed)
- Power Adapter (DC 5V/2A) and USB Cord (2.7m)
- Instruction Manual
- Mounting Screws
- Mounting Bracket
- Quick Guide
- Warning Sticker
- Positioning Sticker

# Contents of the package



*Image: A visual representation of all components included in the LIWAN 4G LTE Cellular Security Camera package, numbered for easy identification.*

## 3. SETUP AND INSTALLATION

### 3.1 SIM Card and Memory Card

The 4G SIM card and 32GB memory card are pre-installed in the camera. The SIM card supports Verizon, T-Mobile, and AT&T networks in the US. Note that only the built-in SIM card is supported; private SIM cards cannot be used. A complimentary 300MB of data is provided for initial testing. Continued use requires a data subscription plan, which can be managed through the Ubox app.

# Built-in SIM Card

## Unlimited Data Plan

- SIM Card Included with 300M Free Data.
- Support Verizon, T-Mobile and AT&T Network.
- Unlimited 4G Data-\$19.9 Per Month.



※ **Note:** Only supports to use built-in SIM card, private SIM cards not be used.

*Image: A detailed view of the camera's SIM card compartment, indicating the pre-inserted SIM card.*

### 3.2 Power Connection

This camera is a wired, plug-in model designed for 24/7 continuous recording. Connect the camera to a power source using the provided DC 5V/2A power adapter and 2.7-meter USB cord. Ensure the power source is stable and continuous for uninterrupted operation.



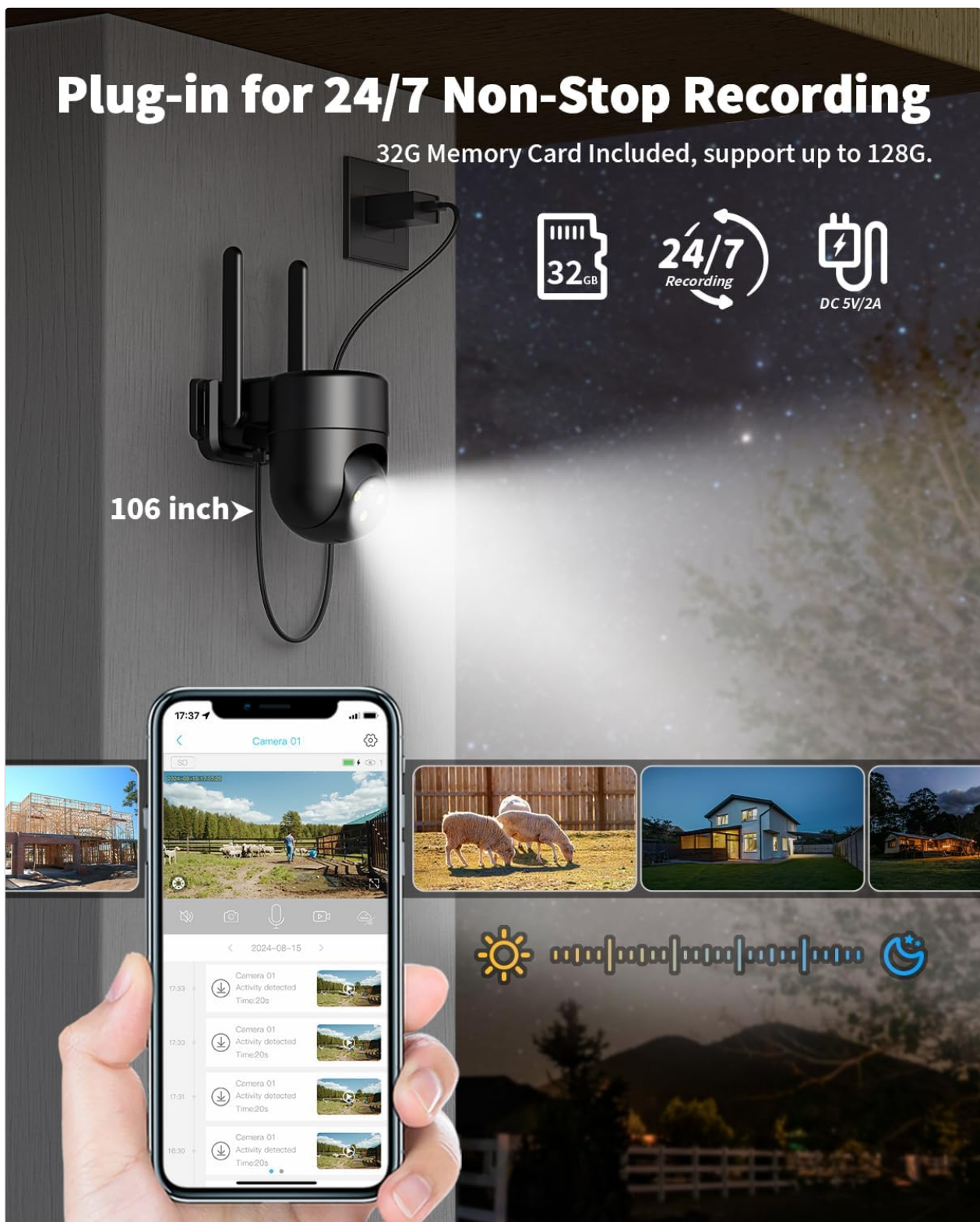


Image: The LIWAN camera mounted outdoors, connected to a power outlet, illustrating its plug-in functionality for continuous recording.

### 3.3 Mounting

The camera is designed for outdoor use and can be wall-mounted. Use the included mounting screws and positioning sticker to securely install the camera in your desired location. Ensure the camera has a clear line of sight to the area you wish to monitor and is within reach of a power outlet.



# 4G LTE Security Camera No WiFi Needed

Built-in SIM card and 32G Memory Card.



**Stable**



**Orchard**



**Farm**



**Jobsite**

*Image: A LIWAN 4G LTE camera mounted on an outdoor wooden beam, demonstrating its suitability for monitoring large outdoor areas like farms or orchards.*

## 4. OPERATING INSTRUCTIONS

### 4.1 Ubox App Control

Control and monitor your camera using the Ubox smartphone application. The app allows for remote viewing, configuration of settings, and access to recorded footage. Download the Ubox app from your device's app store.

### 4.2 Continuous Recording



The camera supports 24/7 non-stop recording, storing footage on the included 32GB memory card (expandable up to 128GB). Cloud storage is available for event recordings with a complimentary 30-day trial.

### 4.3 Night Vision Modes

The camera features 2K color night vision with three selectable modes:

- **Infrared Night Vision:** Standard black and white night vision.
- **Color Night Vision:** Utilizes built-in spotlights to provide full-color video in low-light conditions.
- **Smart Night Vision:** Automatically switches between infrared and color night vision based on detected motion or alarm events.

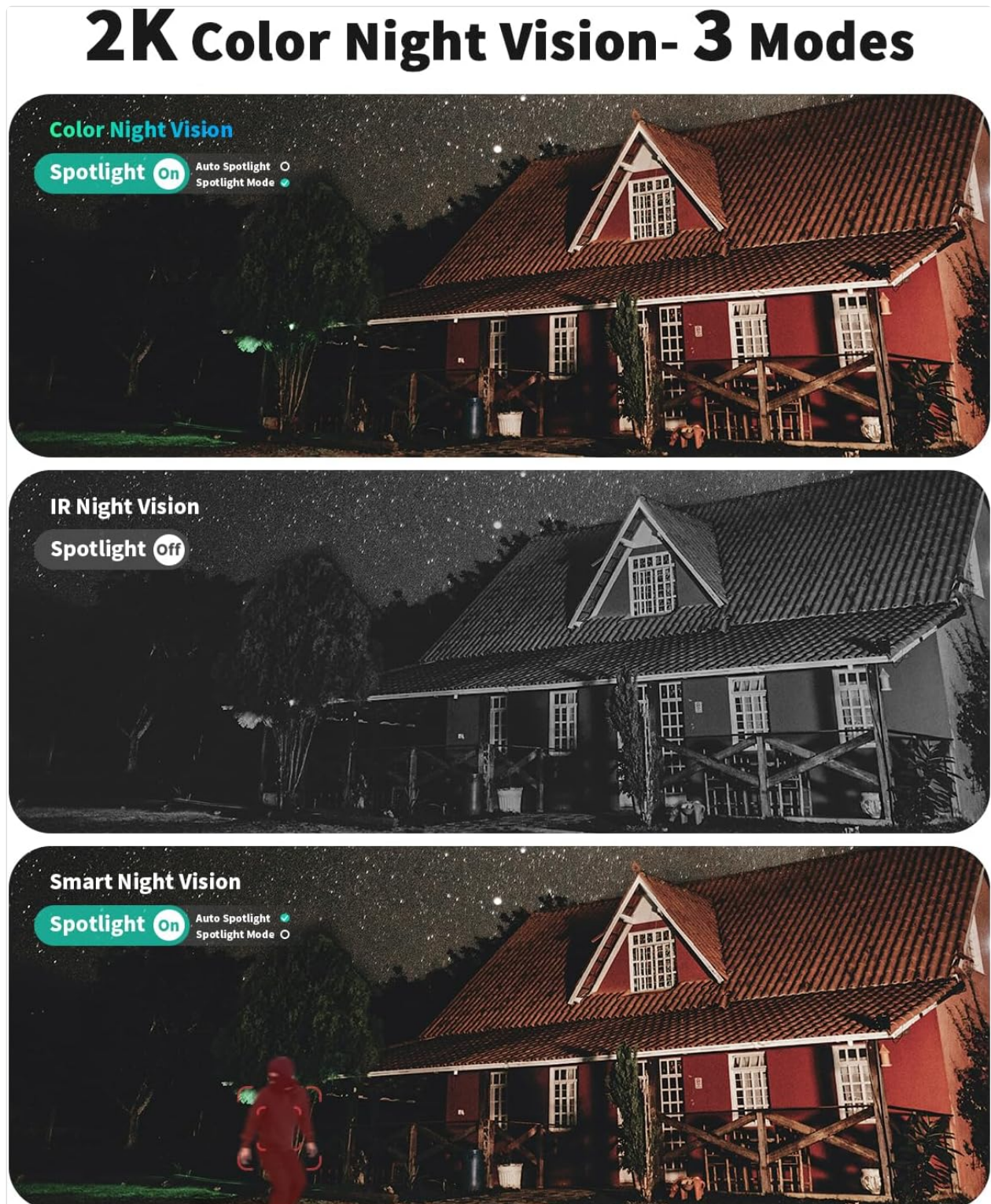


Image: Comparison of the three night vision modes (Color, IR, Smart) offered by the LIWAN camera, showing different visual outputs in a nighttime setting.



#### 4.4 360-Degree Viewing and Digital Zoom

The camera offers a 360-degree viewing angle, allowing comprehensive monitoring of your surroundings. Utilize the 4X digital zoom feature via the Ubox app to focus on specific details within the camera's field of view.



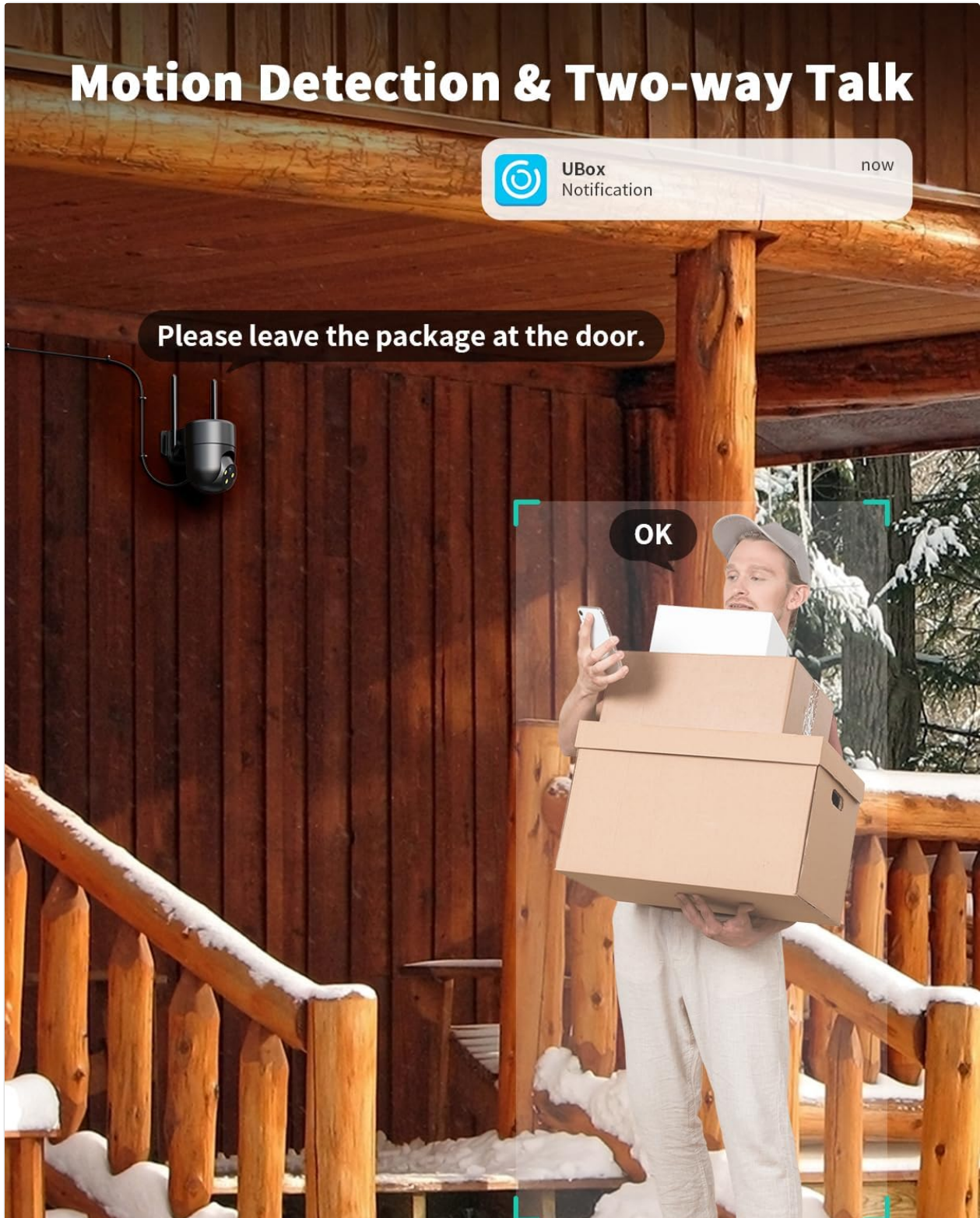
*Image: A smartphone screen displaying the Ubox app interface, demonstrating the ability to control the camera's 360-degree pan/tilt and use 4X digital zoom to view a horse in a field.*

#### 4.5 Motion Detection and Two-Way Audio

The camera features smart motion detection, sending real-time alerts to your mobile phone. You can



customize detection areas within the app to reduce false alarms and protect privacy. The built-in two-way audio allows for real-time communication with visitors or to deter intruders.



*Image: An illustration of the camera's motion detection and two-way audio capabilities, showing a notification on a phone and a person speaking through the camera.*

## Share with Your Family



Image: The Ubox app interface demonstrating how to set custom detection areas to minimize unwanted alerts.

## 5. SPECIFICATIONS

Feature	Detail
Model Number	TZ-SH330
Indoor/Outdoor Usage	Outdoor
Power Source	Corded Electric (DC 5V/2A)
Connectivity Protocol	Cellular (4G LTE)
Compatible Networks (US)	Verizon, T-Mobile, AT&T
Video Capture Resolution	2K
Night Vision	2K Color Night Vision (Infrared, Color, Smart modes)
Viewing Angle	360 degrees (PTZ)
Digital Zoom	4X
Storage	32GB MicroSD card included (supports up to 128GB), Cloud Storage (event recording)
Audio	Two-Way Audio
Water Resistance Level	Waterproof
Dimensions (L x W x H)	5.6 x 4.7 x 3.1 inches
Item Weight	2.33 pounds

## 6. TROUBLESHOOTING

- **Camera Not Connecting to Network:** Ensure the camera is powered on and the built-in 4G SIM card has an active data subscription. Verify that you are in an area with 4G LTE coverage from Verizon, T-



Mobile, or AT&T. Remember, this camera does not support Wi-Fi connections or private SIM cards.

- **No 24/7 Recording:** Confirm the camera is continuously powered via the included adapter. 24/7 recording is stored on the local memory card. Cloud storage is typically for event-triggered recordings only. Check the memory card status and capacity in the Ubox app.
- **Poor Image Quality at Night:** Ensure the camera lens is clean and free from obstructions. Adjust night vision settings in the Ubox app (Infrared, Color, or Smart mode) to suit your environment. Ensure the built-in spotlight is enabled for color night vision if desired.
- **False Motion Alerts:** Adjust the motion detection sensitivity settings within the Ubox app. You can also define custom detection zones to exclude areas where frequent, non-threatening movement occurs (e.g., public pathways, swaying trees).
- **Two-Way Audio Issues:** Check your smartphone's microphone and speaker settings. Ensure the camera's microphone and speaker are not obstructed. Verify volume levels in the Ubox app.

## 7. MAINTENANCE

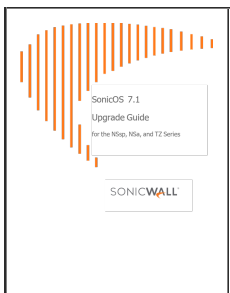
- **Cleaning:** Regularly clean the camera lens and housing with a soft, damp cloth to remove dust and debris. Do not use harsh chemicals or abrasive materials.
- **Firmware Updates:** Check the Ubox app periodically for available firmware updates. Keeping your camera's firmware updated ensures optimal performance and security.
- **Memory Card Management:** If using local storage, periodically review and manage recorded footage to ensure sufficient space. The camera supports up to 128GB MicroSD cards.
- **Power Connection:** Ensure the power cable and adapter remain securely connected and free from damage.




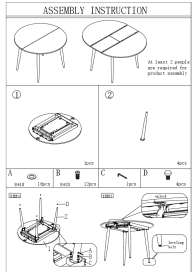

## 8. WARRANTY AND SUPPORT

For warranty information and technical support, please refer to the contact details provided in your product packaging or visit the official LIWAN website. Keep your purchase receipt for warranty claims.

For app-related inquiries or data plan management, please consult the Ubox application directly.

### Related Documents - TZ-SH330

	<p><a href="#">SonicOS 7.1 Upgrade Guide: NSsp, NSa, TZ Series Firmware Update &amp; Configuration</a></p> <p>Comprehensive guide for upgrading SonicWall NSsp, NSa, and TZ series firewalls to SonicOS 7.1. Learn how to upgrade firmware, back up configurations, and import settings.</p>
--	--

	<p><a href="#">Hiseeu Wireless Security Camera System User Guide - Models WNKIT-4HB612-1T, TZ-HB612</a></p> <p>User guide for the Hiseeu Wireless Security Camera System, detailing setup, features, operation, and specifications for models like the expandable 8CH/10CH 2K NVR system (WNKIT-4HB612-1T) and 3MP add-on camera (TZ-HB612).</p>
	<p><a href="#">DAIKIN EWAH/EWAD/EWAS/EWFH/EWFD/EWFS-TZ-D Asennus-, Käyttö- ja Huolto-ohjekirja</a></p> <p>Tämä DAIKINin asennus-, käyttö- ja huolto-ohjekirja tarjoaa kattavat ohjeet EWAH, EWAD, EWAS, EWFH, EWFD ja EWFS-TZ-D -sarjan ilmajäähdysteisten ruuvikompressorijäähdyttimien asentamiseen, käyttöön ja ylläpitoon. Se sisältää turvallisuusohjeita, asennus- ja huoltomenettelyjä sekä teknisiä tietoja.</p>
	<p><a href="#">Indeeco Invizatherm™ Infrared Heaters: Product Catalog and Specifications</a></p> <p>Explore the Indeeco Invizatherm™ and Invizatherm™ Thin series of high-efficiency, low-maintenance infrared heaters. This catalog provides detailed product specifications, application suitability, control options, and ordering information for commercial and industrial comfort heating solutions.</p>
	<p><a href="#">Assembly Instruction for George Oliver 42-54" Extendable Dining Table</a></p> <p>Step-by-step assembly guide for the George Oliver 42-54" Extendable Dining Table, including parts list, hardware details, and detailed assembly instructions for extending and adjusting the table.</p>
	<p><a href="#">Hiseeu WKIT-4HB612-1T User Manual: Setup, Features, and Troubleshooting Guide</a></p> <p>Comprehensive user manual for the Hiseeu WKIT-4HB612-1T Wireless Battery Security Camera System. Covers installation, setup, network configuration, features, and frequently asked questions for optimal system performance.</p>